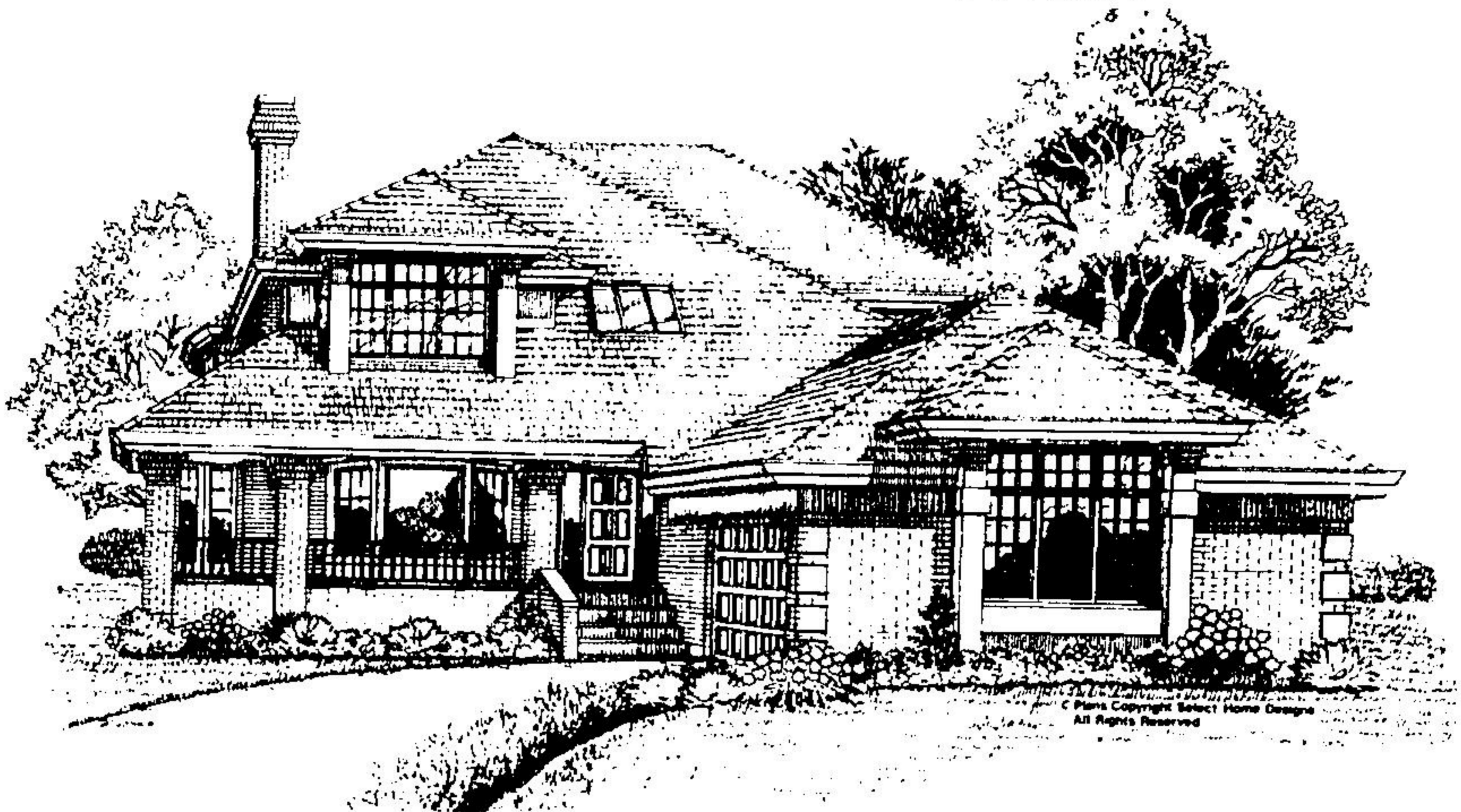


HOME OF THE WEEK



COVERED VERANDAH WRAPS HANDSOME FAMILY HOME

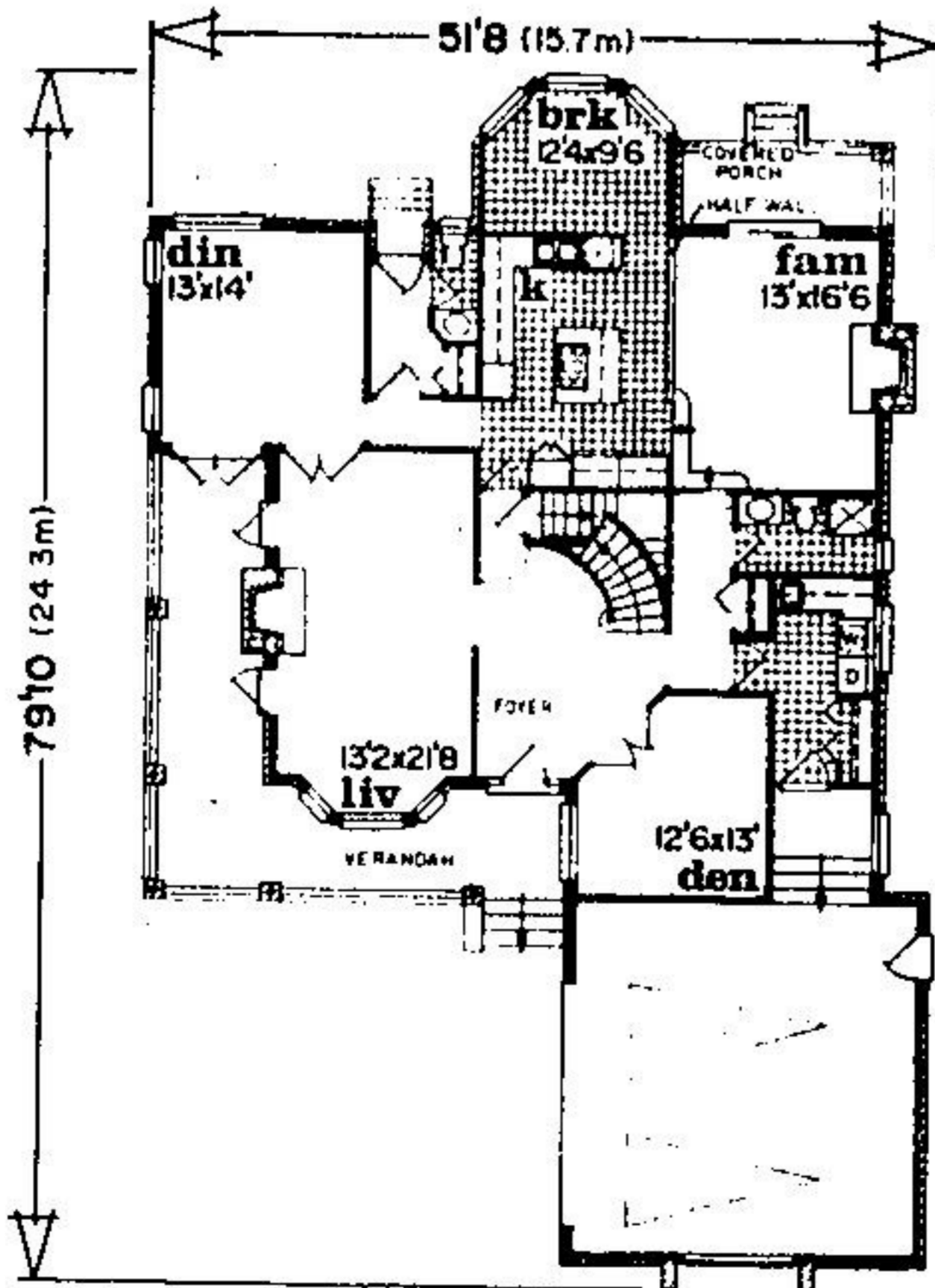
Skylit two storey entrance foyer with sweeping curved staircase welcomes guests to this four bedroom home. An expansive living room with front view bay window and masonry fireplace opens to the covered verandah - inviting outdoor relaxation. The island kitchen with sun-drenched breakfast bay overlooks the large sunken family room. Sliding glass doors from the covered porch access the family room which has a second warming fireplace. A secluded den off the main foyer easily doubles as a guest room or study. Convenient double car garage has direct interior access to mud/laundry room.

Retire upstairs to an elegant master bedroom which features a coffered ceiling, roomy walk-in closet and lavishly appointed ensuite. The ensuite boasts his/hers vanity, raised whirlpool spa tucked in a win-

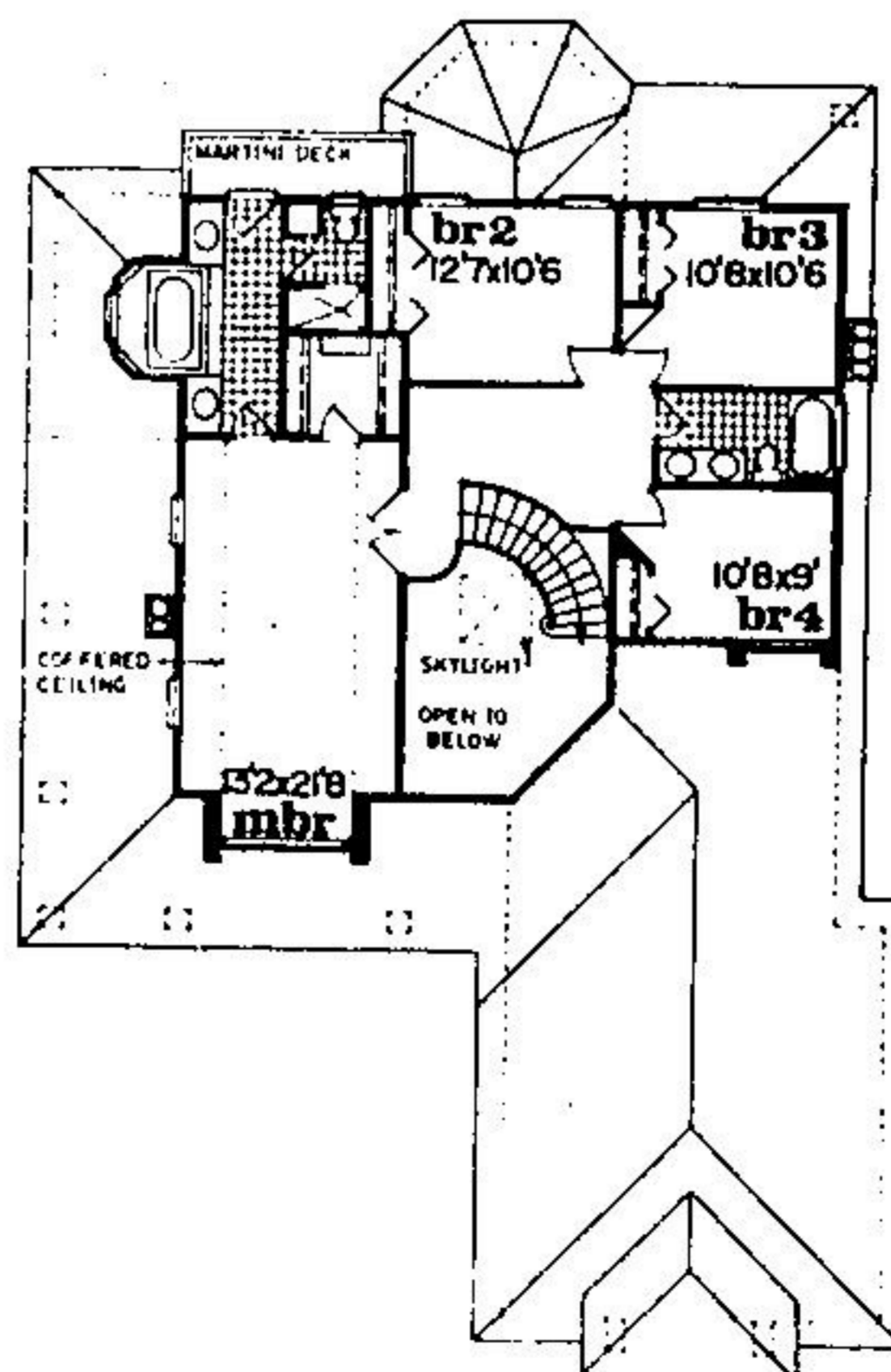
dow bay and adjoining martini deck. The three additional bedrooms share a four piece main bathroom with twin vanity and soaking tub.

The finished floor area is 3084 square feet.

Send for Canada's largest plan book with over 300 designs, only \$9.95, including shipping. To build Plan No. 88-3119, order an 8 set blueprint package for \$398.00, or 5 sets for \$342.00, plus \$14.00 shipping. Send payment to HOME OF THE WEEK, c/o Halton Hills Herald, Unit 6-2624 Dunwin Drive, Mississauga, Ontario, L5L 3T5. For fastest service, use Visa/MasterCard and call toll free 1-800-663-6739, 11:30 a.m.-8:00 p.m. Eastern Time, Monday to Saturday.



first storey 1834 sq.ft.



second storey 1250 sq.ft.

PLAN NO. 88-3119