

HOME OF THE WEEK



© Plans Copyright Select Home Designs
All Rights Reserved



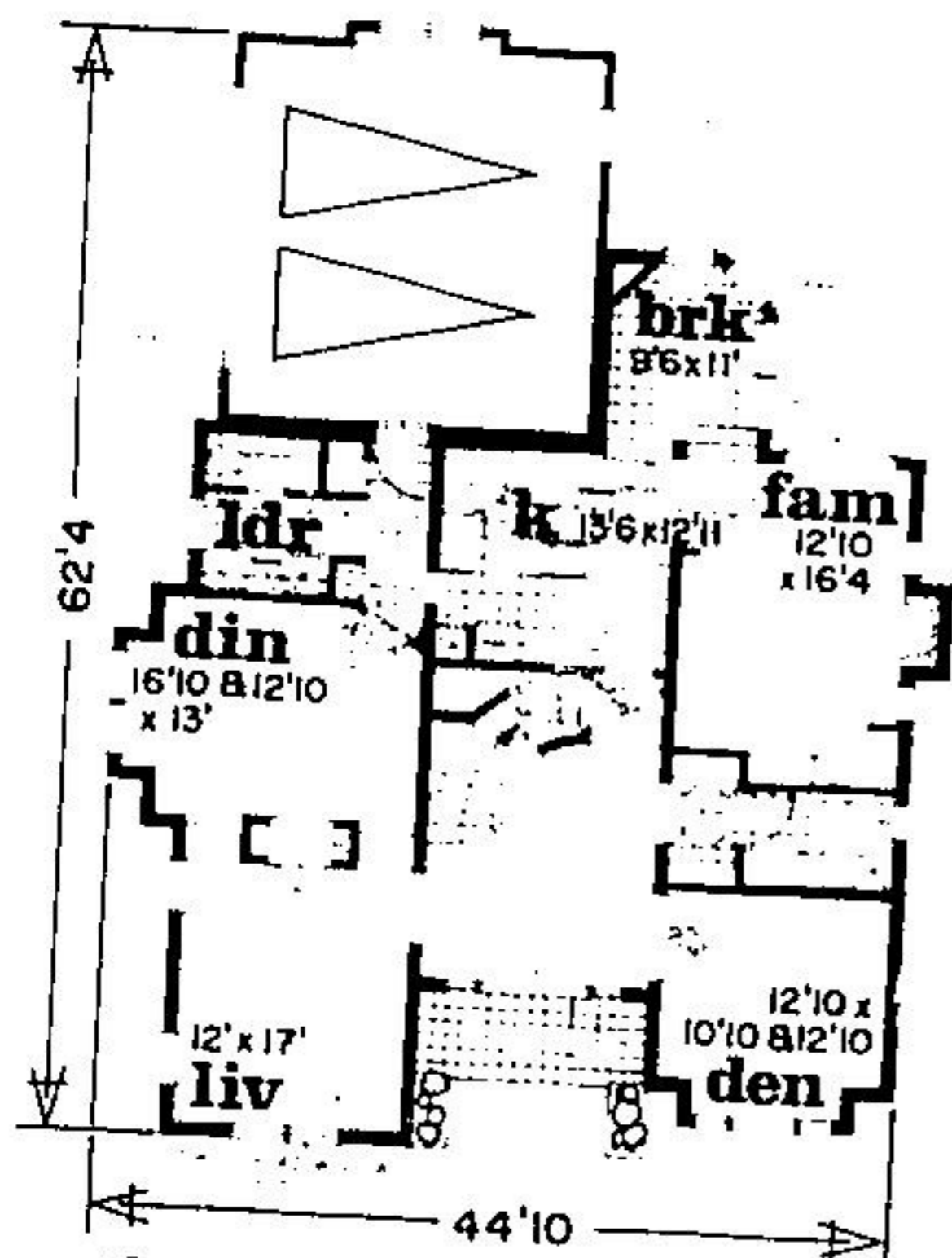
Curved staircase dominates foyer.



OPTIONAL ELEVATION

IDEA HOME

A DREAM COME TRUE

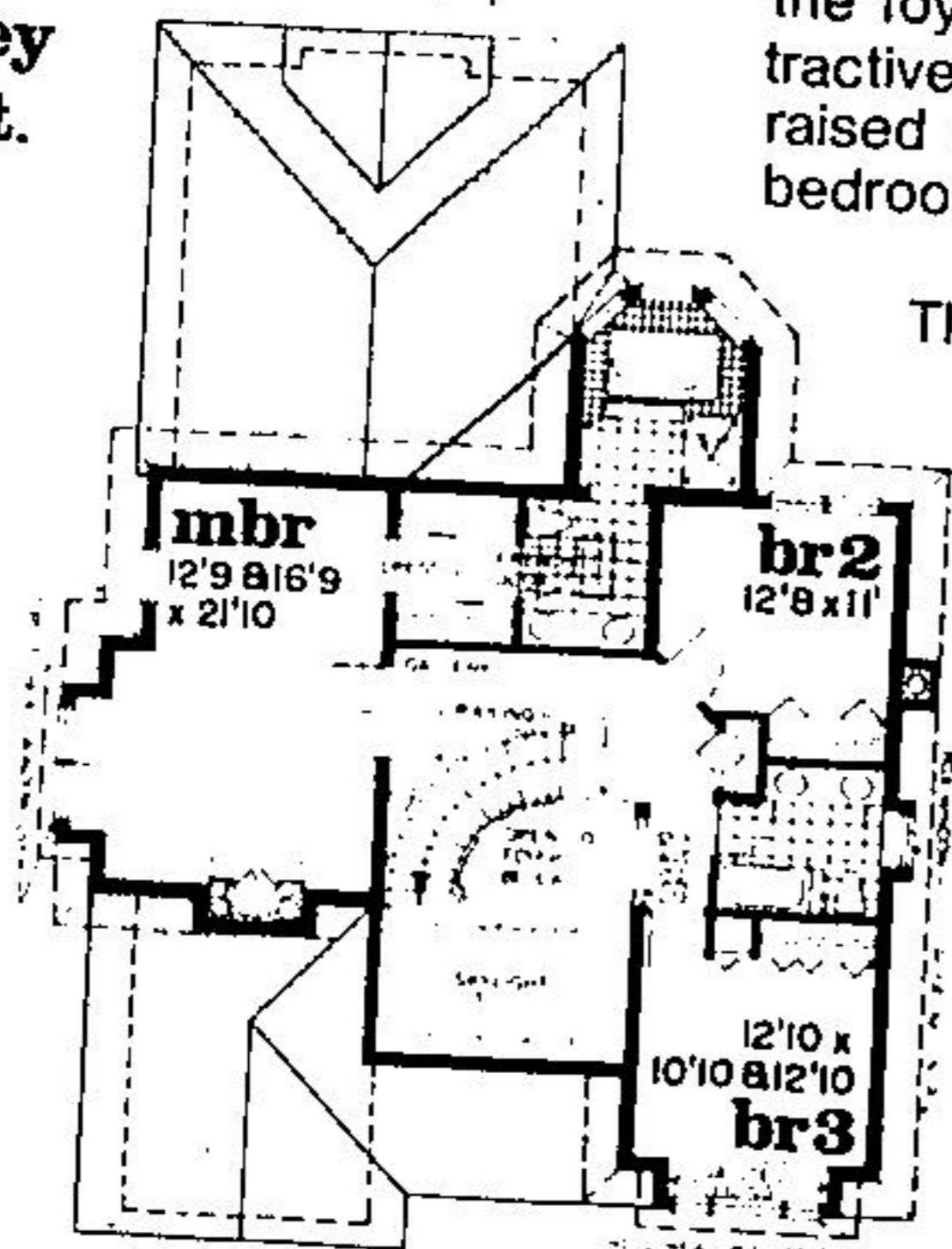


first storey
1643 sq. ft.

Pastel textured stucco with quoining accents and circle head windows create a refreshing alternative to the traditional brick home - one that can easily be renewed or changed with a coat of paint. An impressive skylit foyer greets guests at the front entry. The living room boasts a spectacular vaulted ceiling and shares a warming fireplace with the spacious formal dining room. The gourmet kitchen, with centred cooking island, adjoins a cheery breakfast bay. A large family room includes a built-in media centre and feature wall fireplace. The roomy double garage to the rear allows easy passage to the kitchen through the utility room. A quiet den with elegant double French doors completes the main level.

The sweeping curved staircase leads to a railed gallery overlooking the foyer. A lavishly appointed master suite includes fireplace, attractive vaulted sitting area and spacious five piece ensuite with a raised whirlpool spa set into a windowed bay. The two additional bedrooms share a four piece bathroom.

The finished floor area of this design is 2837 square feet.



second storey
1194 sq. ft.

PLAN NO.
87-2836

Send for Canada's largest plan book with over 300 designs, only \$9.95, including shipping. To build plan no. 87-2836, order an 8 set blueprint package for \$398.00. or 5 sets for \$342.00, plus \$14.00 shipping. Send payment to HOME OF THE WEEK, c/o Halton Hills Herald, Unit 6-2624 Dunwin Drive, Mississauga, Ontario L5L 3T5. For fastest service, use Visa/MasterCard and call toll free 1-800-663-6739, 11:30 a.m.-8:00 p.m. Eastern Time, Monday to Saturday.