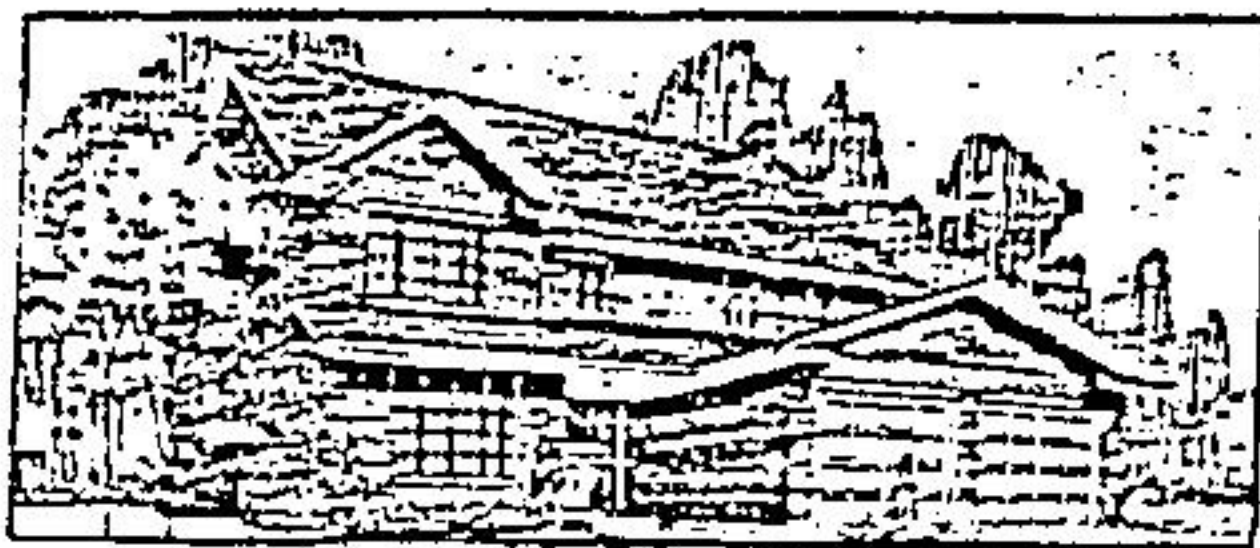


MALTON
HILLS

Real Estate

OUTLOOK

Your Guide
to New and
Resale Homes
in Georgetown,
Acton, Erin &
Surrounding Areas



A TRULY CLASS ACT

The features of this home are too numerous to mention here. This house incorporates 2500 sq. ft. with more than the usual amenities including a two car garage. Being built in the exclusive Park District of Georgetown by one of our best builders. If you are looking for real quality in the prestigious park area you must investigate this home. Call Phil Carney, Sales Rep. 877-5165.

87-376

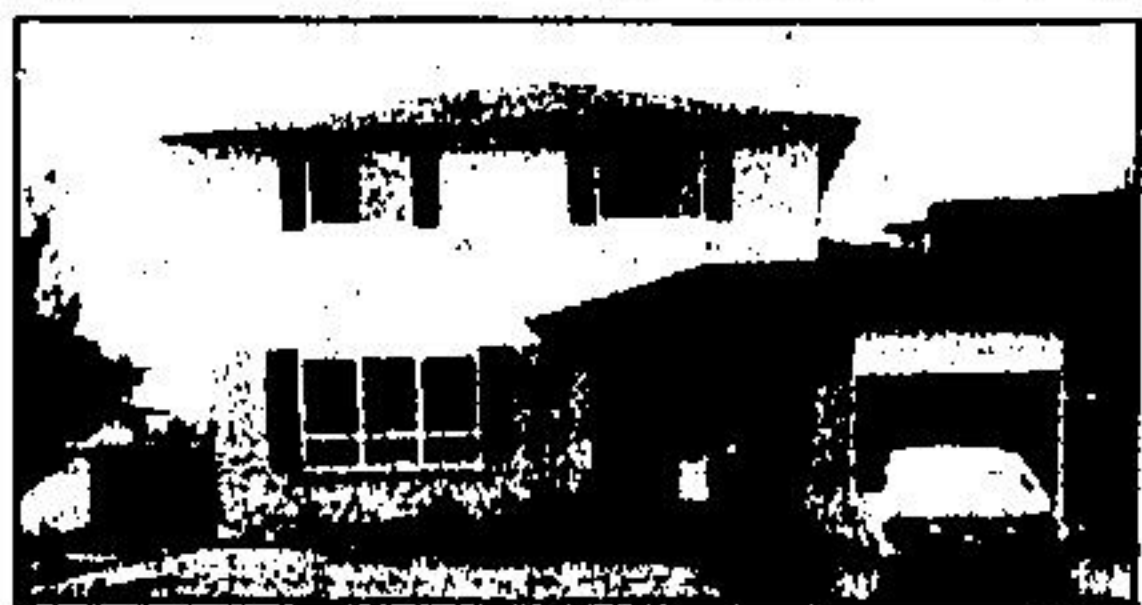
ARTHUR F.
**JOHNSON &
ASSOCIATES**
LIMITED REALTOR



NEW LISTING

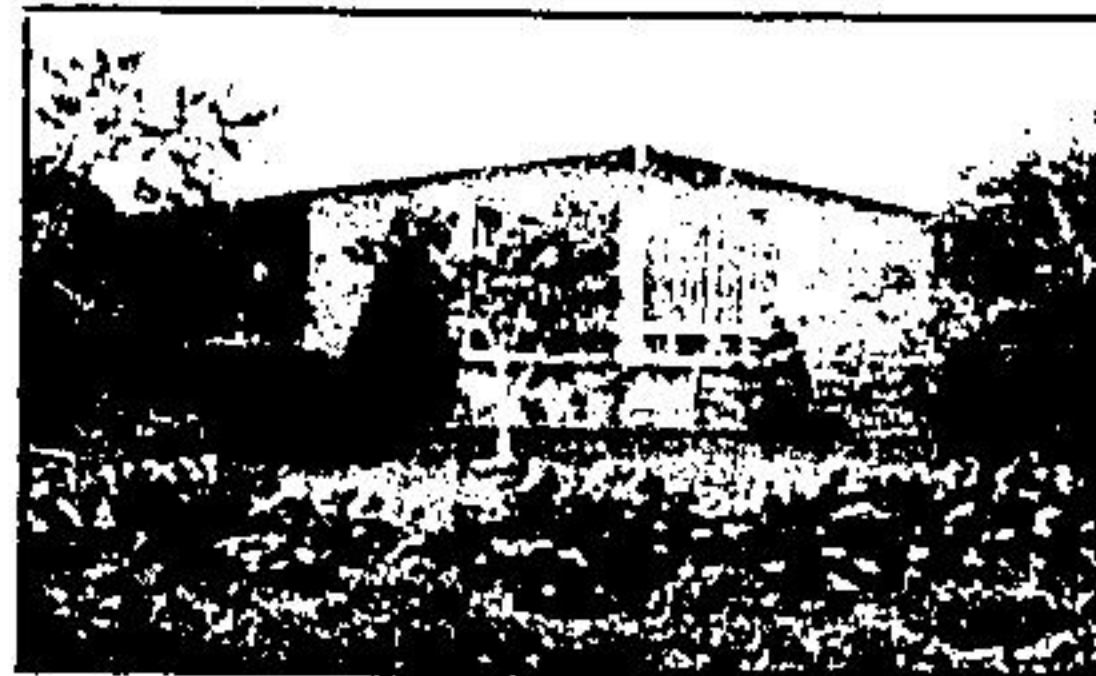
Immaculate 2 storey, 3 bedroom home, lots of extras, French doors, 2 fireplaces, main floor laundry, oak kitchen cupboards, built-in dishwasher and garburator. Beautifully finished basement with gorgeous oak bar and walkout to private Jacuzzi. Mature lot in Park District. C21-87-71

Century
21



DORSET PARK IN MILTON \$159,900.00

Excellent value for this lovely 4 bedroom home with single car garage and large lot. Features lovely upgraded broadloom, ceramic tiles on main floor, cheerful eat-in kitchen with door to large deck. Immaculate throughout and in move-in condition. Call Peter or Yvonne at 877-5211. 7409



COUNTRY LIVING AT ITS BEST

ROYAL CITY
REALTY

Lovely bungalow situated on an acre in the exclusive Huttonville area. Experience a breath of fresh air with Peter Ferri or David Hunter 877-5298. 7246