

# Riding the rails at Rockwood's radial museum



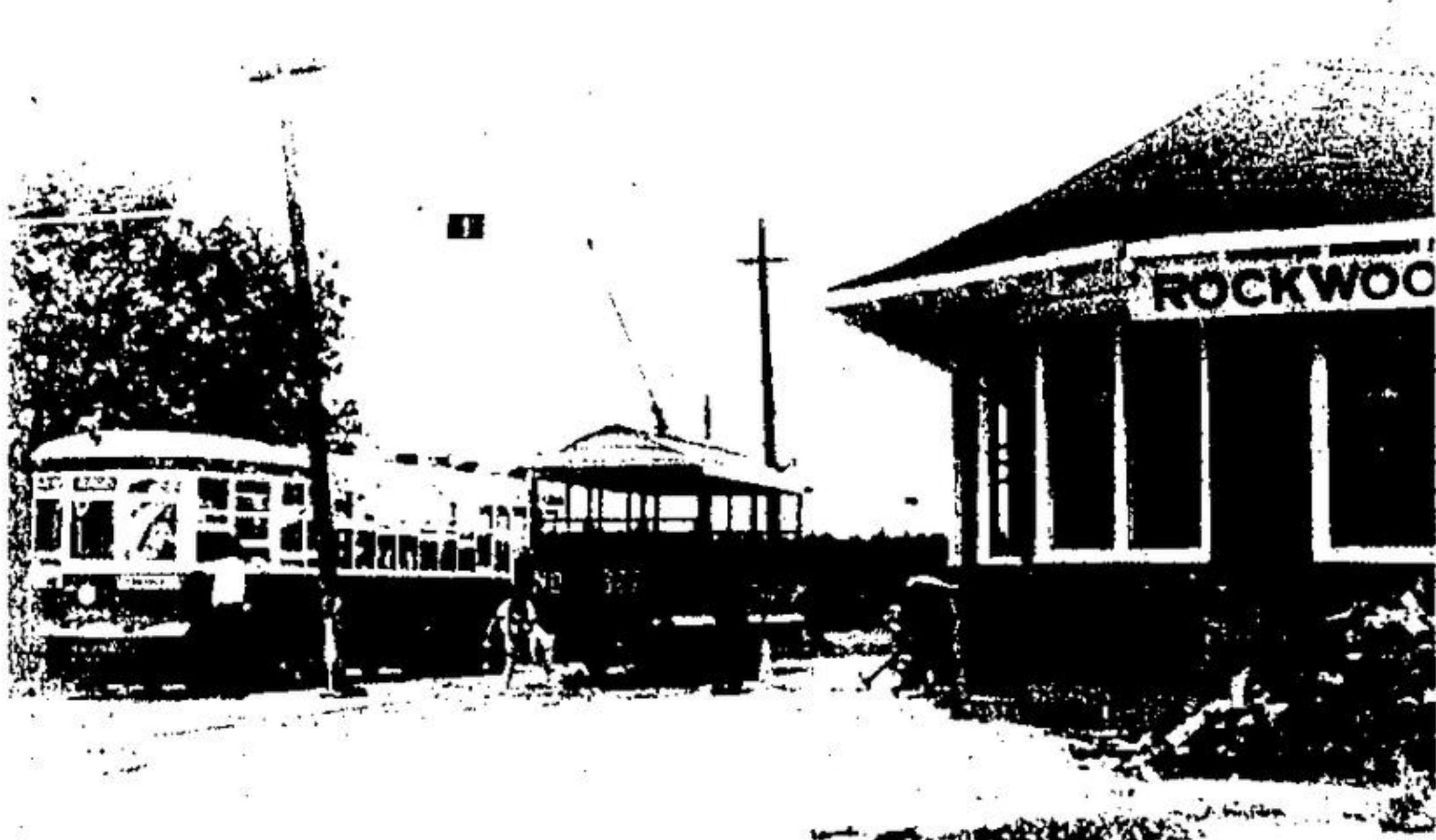
With the toot of a horn and an "all aboard", passengers are warned that it's time to go. Here, one of the conductors prepares for a departure with a young friend aboard to keep him company in the front cab. (Herald photo)



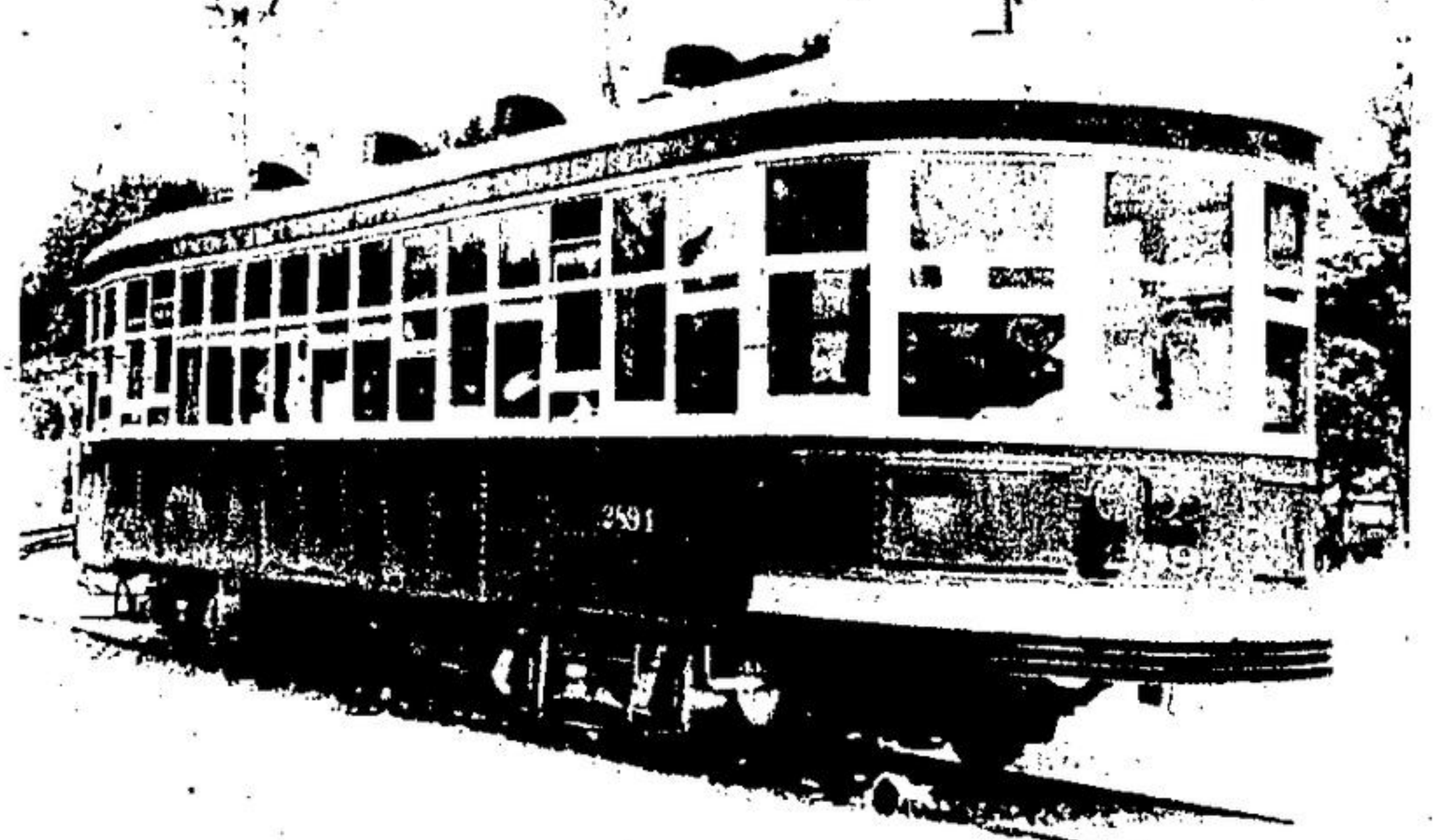
Jan Gillis, 5, of Scarborough can't wait for the electric trolley car to start. The enthusiastic youngster has his ticket ready and is anxious to hop aboard. Passengers are carried through a mile of scenic woodland in the Rockwood area. (Herald photo)



The Halton County Radial Railway Museum is a life-size working museum featuring classic antique electric rail vehicles operation on a mile of scenic track. There are a variety of historic street cars, radial cars and work cars. Most of the cars are more than 60 years old.



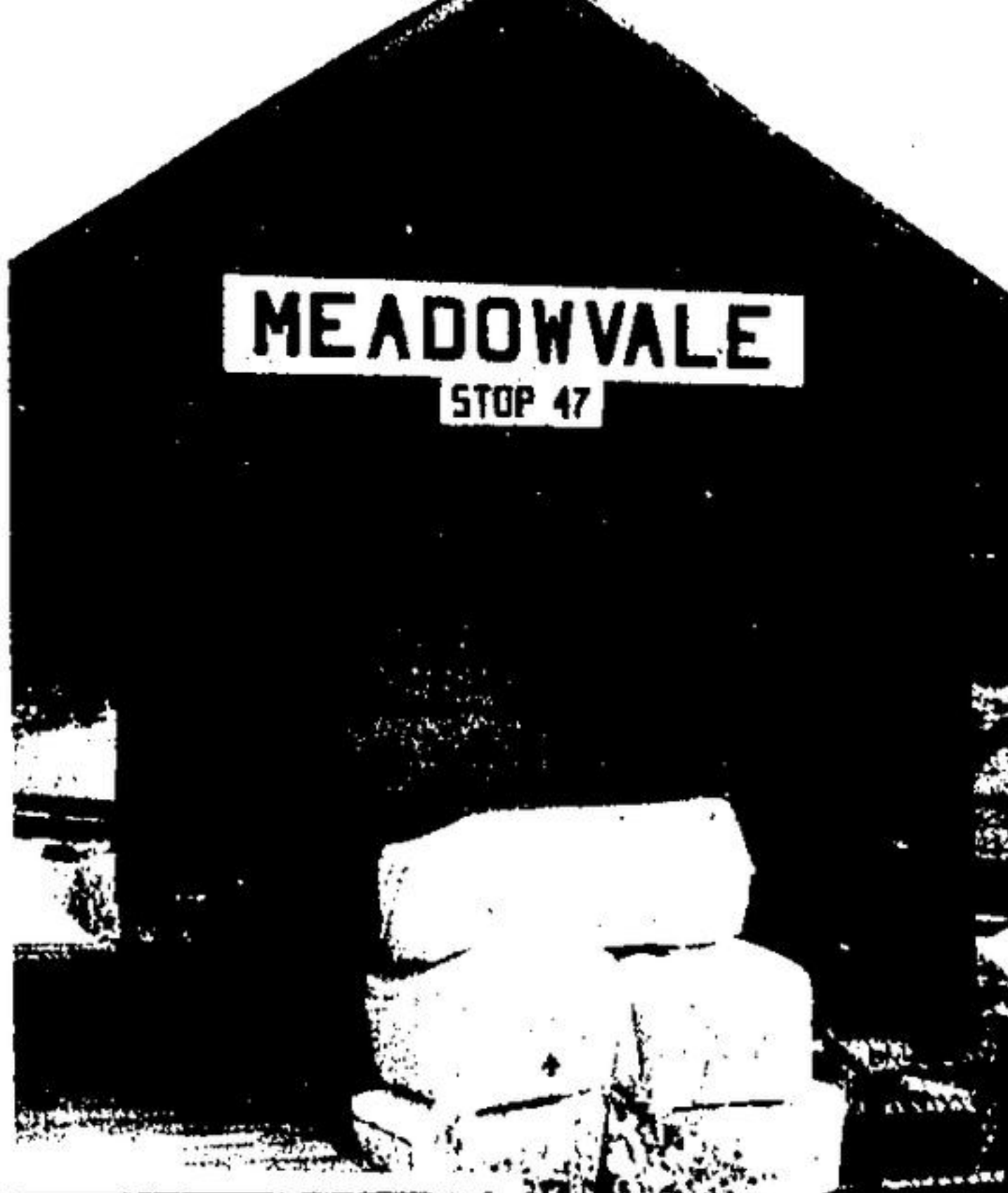
All aboard for the eastbound trolley. Waiting at the station to pick up passengers, conductors usher visitors onto three trolleys or electric rail cars in full operation Sunday at the radial museum near Rockwood. The museum operates Saturday Sunday and holidays from mid-May until the end of October.



After passengers are taken through a forest on a mile of railway track, there is a rock garden, a fountain and this small Meadowvale Station to greet them. People are free to step off and explore the eastern terminus car house, which includes more railway and electric cars from the past. (Herald photo)



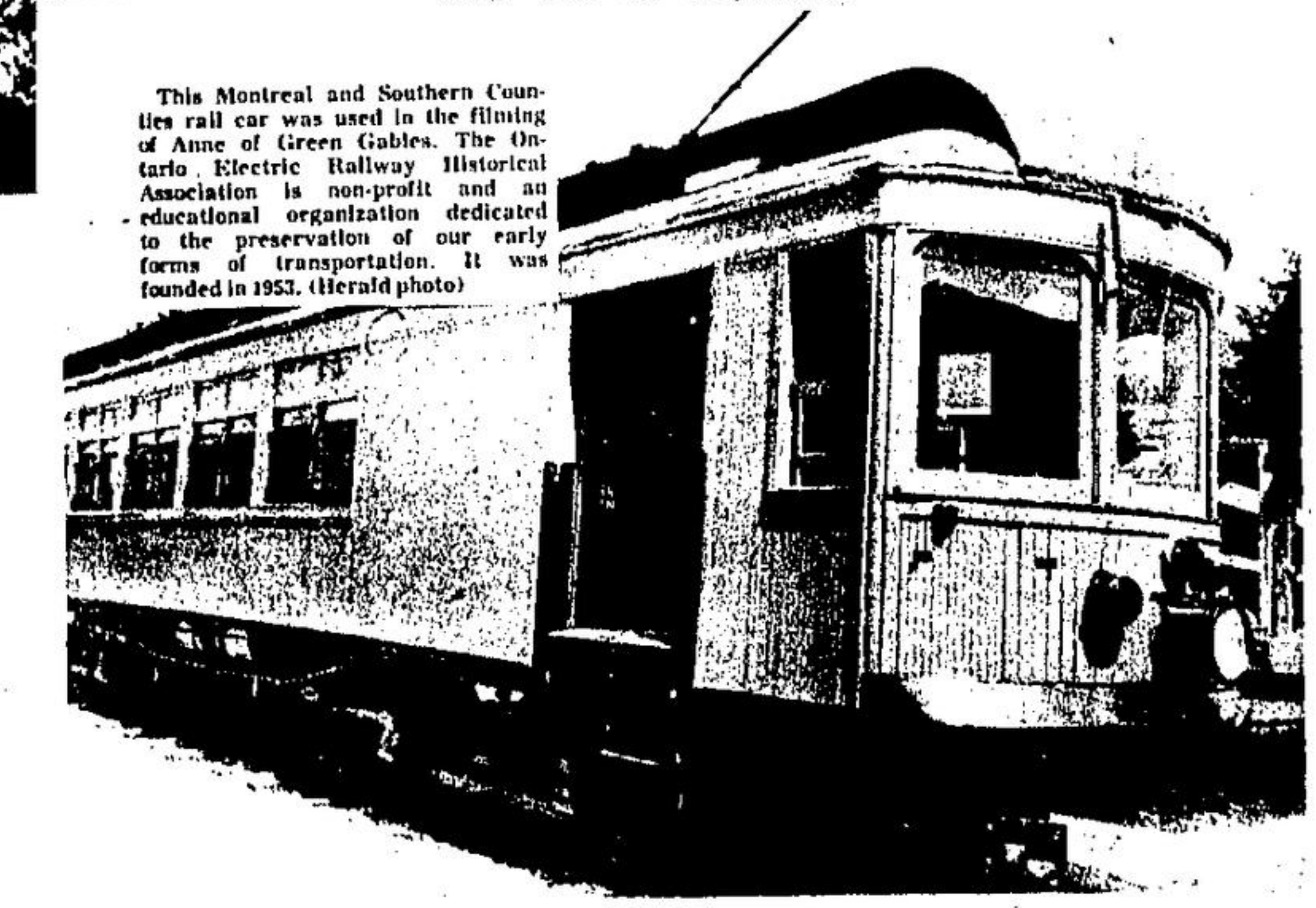
Checking out the pot-bellied stove are two of the conductors on duty at the Halton County Radial Railway Sunday. The old wood stove is located inside the original Rockwood rail station which was saved from the wrecker's ball. Seen here are (left) president Rob Johns and director Jack Hastings, volunteers with the museum. (Herald photo)



A student from Guelph, Brian Hume, sands down a part of a historic radial car in the restoration centre at the Rockwood based radial railway museum. The vehicle storage areas are complemented with many on-going restoration projects. Volunteer craftsmen and artisans carefully refurbish and rebuild newest additions to the collection. (Herald photo)



Volunteer workers Ian Smith (left) and Jeff Noakes carry on some track maintenance while electric rail vehicles pass by them every twenty minutes filled with children and families. The Ontario Electric Railway Historical Association is non-profit, manned by volunteers. Inside the restoration centre at the radial railway museum, two volunteers are hard at work doing some welding. Seen here are Ron Cooper and Stephen Plooth (the welder). Visitors can gaze at work cars under restoration, eye workshop equipment and climb aboard trolleys and explore at their leisure. (Herald photo)



This Montreal and Southern Counties rail car was used in the filming of Anne of Green Gables. The Ontario Electric Railway Historical Association is non-profit and an educational organization dedicated to the preservation of our early forms of transportation. It was founded in 1953. (Herald photo)