

Sloping backyard relief to 16 valley households

Preliminary engineering work costing \$30,000 is to be undertaken for stabilizing backyard slopes on Irwin and Metcalfe Streets in Georgetown.

The Ministry of Natural Resources is being asked to put up 55 per cent of this cost with the remainder to be picked up by the Town of Halton Hills.

Slope failure affecting the backyards of more than 16 homes on Metcalfe Court became apparent in the late 1970s. Although some remedial work was done on the Metcalfe Ravine by the Credit Valley Conservation Authority and the town, the responsibility of stabilizing each backyard remained with the individual property owners.

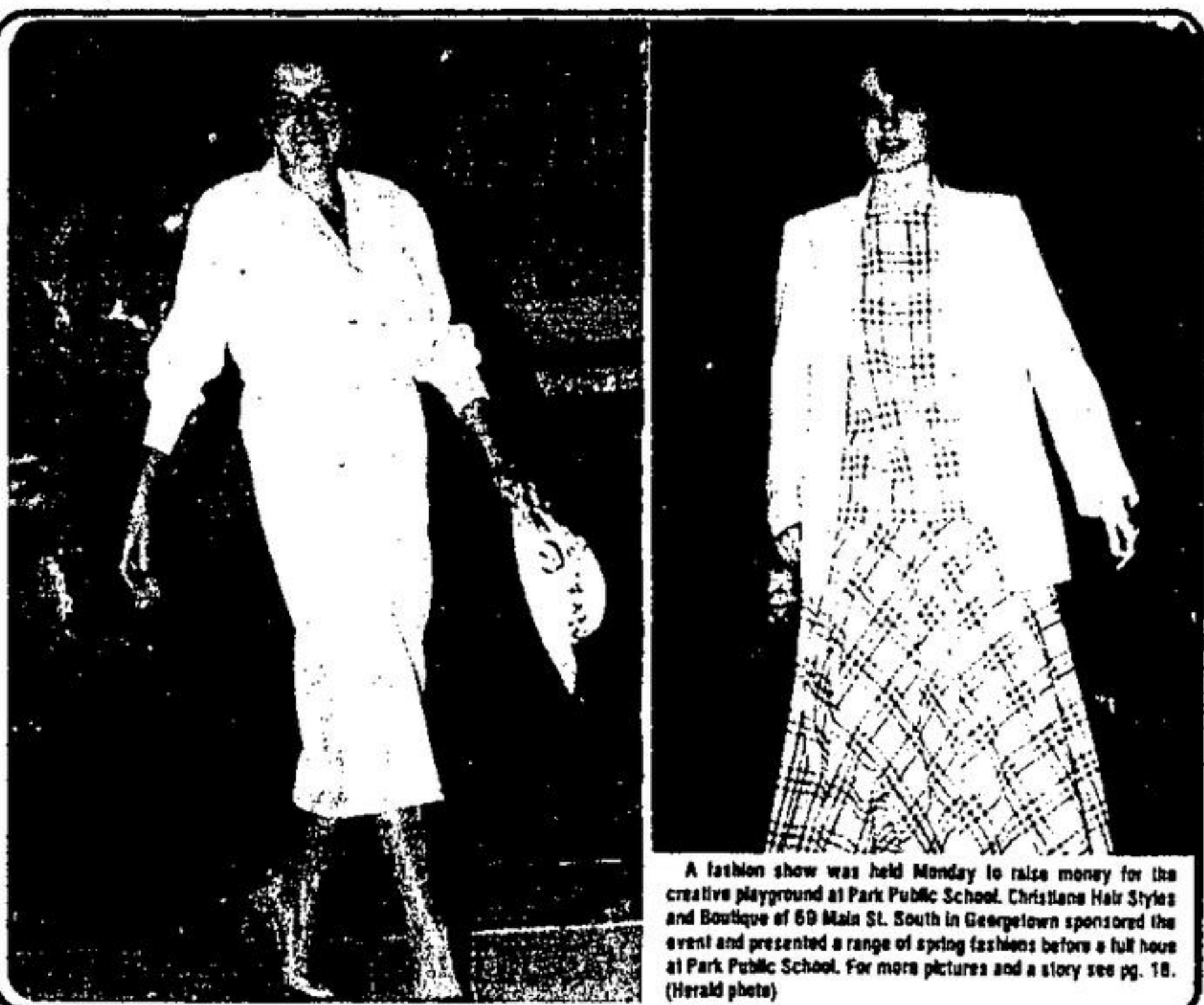
In the spring of 1985, Metcalfe Court residents found their backyards sank into the ravine again.

As well, 13 backyards on Irwin Crescent dropped more than a metre in spots, plus three homes on Dawson Crescent and two on Eden Place. All are part of the Delrex development completed in the late 1960s.

A study by Peto MacCallum Limited, geotechnical engineers, found that when the area was developed, the builder maximized the developable area by extending the backyards of ravine lots beyond the original crest of the slope. Fill material put down wasn't properly compacted, so that when it becomes wet it moves.

The engineers say the problem is worse now that a failure line has been established. With excessive wetness, more slippage occurs. Eventually the backyards of these homes will disappear unless remedial works are undertaken, they warn.

Halton Hills Outlook



A fashion show was held Monday to raise money for the creative playground at Park Public School. Christiane Hair Styles and Boutique of 69 Main St. South in Georgetown sponsored the event and presented a range of spring fashions before a full house at Park Public School. For more pictures and a story see pg. 18. (Herald photo)

Friday, March 13, 1987

Community Calendar

MARCH

Tu	We	Th	Fr	Sa	Su
1	2	3	4	5	6
7	8	9	10	11	12
13	14	15	16	17	18
19	20	21	22	23	24
25	26	27	28	29	30
31					

March 16 at 7:30 p.m. Acton Red Cross Awards Night at the Christian Reformed Church. An open meeting, there will be a talk on AIDS.

March 14 plus March 18-21 - Bantam hockey tournament at Gordon Alcott Arena. All day.

March 20 - Glenn Bennett and the Magic Dragon Band at the John Elliott Theatre (11 a.m.) and the Acton Library (2 p.m.)

Century 21
 Realty of Distinction Inc., Realtor
 MEMBER BROKER
 112 MAIN ST. S., GEORGETOWN
 (CORNER OF CHURCH & MAIN)
 873-1881

Pee wee hockey squad in playoff struggle pg 6
 Those flashy Toronto Spitfires pg 18

OPEN 10-10, 7 DAYS A WEEK
 "Canada's Largest Lumber Store"
 It's Worth the Drive to Acton!
the olde Hide House
 49 EASTERN ACTON
 (519) 853-1031
 Built in 1922

Dear Meg solves mother-in-law troubles pg 9
 Foster home helps 28 children pg 16

Fendley Florists
 To: The Best Mum In The Whole World...United Kingdom Mother's Day is March 29th... Order Flowers Today - Don't Delay!
 NORTHVIEW CENTRE
 211 Guelph St., Georgetown 877-6901

Meeting up with a beaver pg 2
 Sugar coating tax reform? pg 15

Poppy's
 Corner of Hwy. 7 (Guelph St. & Mountainview Rd. S., Georgetown)
 877-7811
 FINE DINING
 Daily Dinner & Luncheon Specials
 LOWER LEVEL LOUNGE
 - Appearing This Week -
 Local Talent: EDGAR JAMES COMPANY 50's-60's Music

REGULAR FEATURES
 Garden Gossip pg 5
 Two report pg 13
 Photo tips pg 14
 Celebrity Chef pg 7
 Stamps pg 18
 Leisure Lines pg 4

A1 CARS QUALITY IS JOB 1 IN EVERYTHING WE SELL AND SERVICE! TRUCKS A1

Includes 100% Powertrain Warranty for 6 Months or 10,000 Km.

<p>1982 CAMARO 6 Cyl. Auto., PS/PB, Stereo. S/N No. 9709A \$18765 PER MONTH</p>	<p>1983 T-BIRD 6 Cyl. Auto., PS/PB, Stereo, "Air". S/N No. 9884 \$21971 PER MONTH</p>	<p>1983 RANGER PICK-UP 4 Cylinder, 4 Speed. S/N No. 9831 \$15426 PER MONTH</p>	<p>1981 DODGE WIN. VAN 8 Cyl. Auto., PS/PB, "Air". S/N No. 8734A \$17762 PER MONTH</p>
<p>1984 DODGE RAM 50 P/U 4 Cyl. 4 Spd., Stereo. S/N No. 9710 \$19106 PER MONTH</p>	<p>1984 LEBARON WAGON 4 Cyl. Auto., PS/PB, Loaded, "Air". S/N No. 86144A \$20657 PER MONTH</p>	<p>1984 CAPRI RS 4 Cyl. 5 Spd., PS/PB, Stereo, Roof. S/N No. 9707 \$22937 PER MONTH</p>	<p>1984 MARQUIS 4 Dr., 6 Cyl. Auto., PS/PB, Stereo, "Air". S/N No. 9714 \$20657 PER MONTH</p>

Monthly Payments Based on 48 Months at 13% & 10% Down O.B.C. Including Tax

CAPITAL FORD SALES
 "YOUR QUALITY SERVICE CENTRE"

361 Guelph St., Georgetown
 873-1626

LOW MONTHLY LEASE RATES

HOURS
 MON. - THURS. 9:00 - 9:00
 FRIDAY 9:00 - 8:00
 SATURDAY 9:00 - 5:00