

ARTHUR F. JOHNSON & ASSOCIATES LIMITED REALTOR

877-5165

TOR: 453-1286

247 Guelph St., Georgetown



BEAUTIFUL NEW LISTING! This 3 bed. brick bung. on a 60'x110' lot features a dining room, upgraded plush broadloom, fin. rec room with bar, new gas furnace and much more!! \$132,000. Call Olga Foreman 86-411



NEW LISTING - Only \$105,900, three bedroom eat-in kitchen with extra cupboards, built-in dishwasher, finished RR, wet bar, extra bath. Call Ev Patterson 86-394



2-BEDROOM REMODELLED BRICK BUNGALOW. formal dining room, 1 bdrm new apt. 2 closets & 2 fridges, walk to Go train. \$104,900. Call Herb Spitzer 86-385



ATTENTION! ONE CAR FAMILIES! Marvelous for Mom! A bright cheerful home and garden close to schools, park and amenities. Everything is there for practical child care! Babysit from home for extra cash. Well cared for 3 bdrm. home. Reduced to \$121,900. Call Marie-F. Brossard to view. 86-400



THE SNOW MAN WELCOMES YOU! w. of Georgetown near Trafalgar. Unique country bung. very "homey" with natural pine trim. Recently updated with new shingles, windows, central vac., etc. Maintenance free exterior. Det. 24' x 26' garage. 1/2 acre lot with high hedge and mature trees. Listed \$137,900. Your opportunity call Harry Burt. 86-414



BACKING ONTO WOODS! This spacious 4 bed., 2 bathroom home has just been totally redecorated. Also, a new deck and 500 spring bulbs have been added to beautifully this Super Home! \$133,900. Call Olga Foreman. 86-415



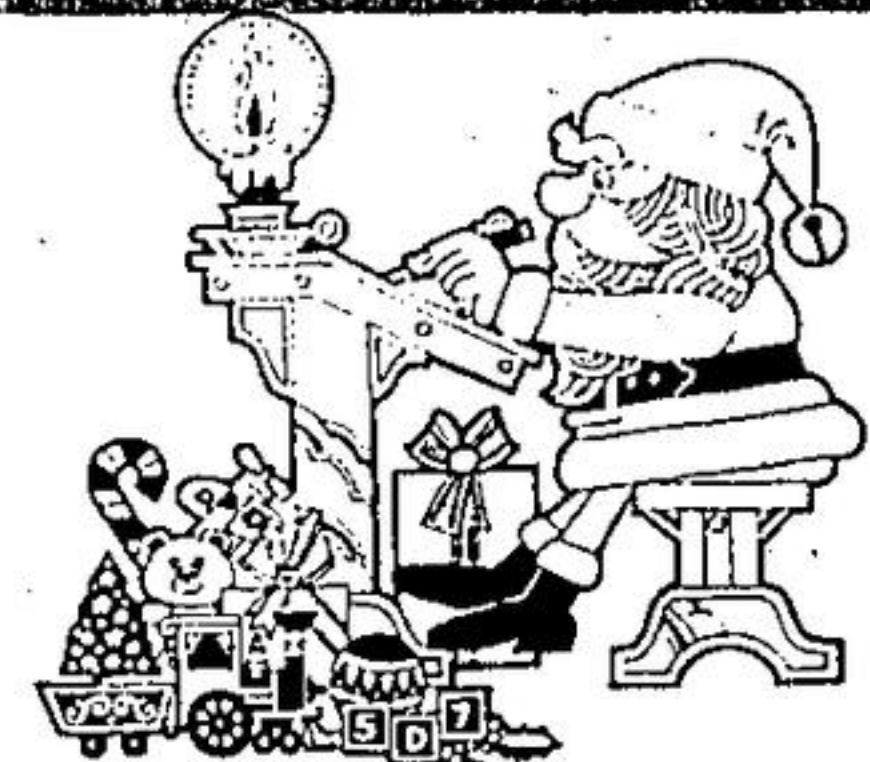
TRY AN OFFER! Super Sharp Semi-Open Design, 3 bdrms, 2 baths, garage, sliders to deck, backing onto park, quality new windows. \$134,400. Dora MacKinnon 86-409



BACKING ONTO PARK! This luxurious 4 bed. featuring huge kit, wicentre isle, oak throughout, main fl. fam. rm. w/F.P., w/o to 20' cedar deck, central air, central vac. \$12,000 in landscaping. A Real Dream Home! \$225,000. Call Olga Foreman. 86-404



TERRA COTTA with Commercial Zoning? Impossible you say, I've got it. Large shop. Super clean home on 3 1/2 acres. Call Fran Parker. 86-275

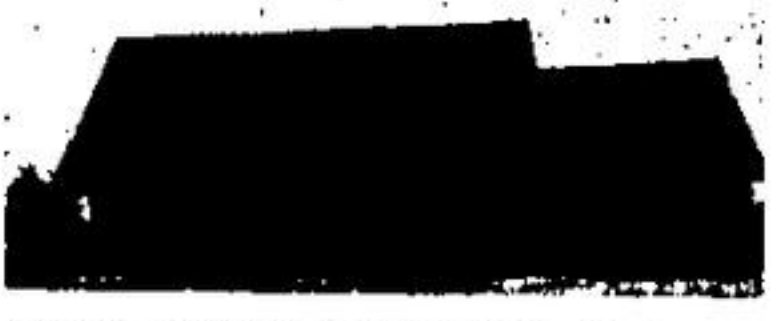


Santa Needs Your Help

So Arthur F. Johnson & Associates and the Kinettes are organizing a toy drive to help make it a Merry Christmas for all his little boys and girls.

Toys collected will be distributed by local Community Groups to many grateful children.

If you have new or used toys in good repair call us for pick up or drop them into Santa's workshop at 247 Guelph St.



LUXURIOUS SOLID WHITE PINE LOG HOME - To be built on 2.4 wooded acres. Featuring jacuzzi bath, floor to ceiling stone F.P., pine kit., cupboards and all pine doors & trim, 2" thick pine floors, 4 bed & 2 1/2' x 15' room w/skylights over garage, sunken L.R., 40' deck and so much more! \$235,000. Call Olga Foreman for details. 86-387



GROWING FAMILY? More space needed? 4 BRS, 3 bathrooms, finished RR, could make life easier! Nice private yard, good location! \$145,900. Call Alice Pokluda 86-373



BEAUTY . . . Detached on nice fenced lot. 3 bdrms, 2 baths, rec rm., new flooring, attractive decor. \$117,500. Call Dora MacKinnon. 86-396

6 acre Homesite



Creemore 100 acs.

TWO MINUTES on paved road from Rockwood. Tranquil 6 acres of fragrant cedar woods awaits your country retreat or family home. Tom Comery 86-406

A TREED & ROLLING property for your summer & winter retreat. Minutes from the charming village of Creemore & skiing at Devils Glen. The panoramic view will knock your socks off. Incredible! \$89,900. Call Tom Comery 86-331



"THAT COUNTRY FEELING" 5 bdrm semi on 30'x25' lot. 14'x20' heated workshop in yard, mature trees, even a stream running through property. Close to schools, minutes to Brampton GO train. \$122,900. Fran Parker. 86-403



INVEST IN and Enjoy your own home. LR, DR, 3 BRS on nice tree-lined street. Close to schools, stores and GO. \$93,900. Call Alice Pokluda 86-383



IMMACULATE CARDINAL MODEL . . . 3 br, eat-in kit., remodelled bath, entry floor in new neutral ceramic tile, large deck off 50'x110' fenced yard. Call Ev Patterson for more details. 86-375



REDUCED TO \$149,900 main floor family rm, 2 bath, finished rec room, nicely landscaped lot with 7 fruit trees. Central air, quiet crescent location. Call Ursula Zeldler 86-362



ATTRACTIVE - NEARLY NEW 3 bedroom bungalow on large 10 plus acres, with large pond. Lots of extras. Must be seen. For appointment to view call Bill Henderson 86-398

FARMS, LOTS & ACREAGES



HORSE FARM - \$390,000.00 Sensational 25 acre horse farm, 48 stables, 1 mile training track. Staff accommodation. 4 bedroom main house with separate office. Call Janet Brandt. 85-857



THIS GENEROUS 5 bdrm home with 2 1/2 baths, main floor family room and formal dining area is peacefully settled on 37 1/2 gently rolling acres enhanced by a free flowing trout stream and pond. Listed at \$189,500. Call Fran Parker for your personal viewing. 86-352



QUICK POSSESSION. Spend a White Christmas in the country. Great in-law suite potential, so why not invite them along. 10 acres of beauty & serenity. 3 br house plus, plus, plus \$189,900. It's waiting for YOU! CALL Marie-France Brossard for a personal tour. 86-298



PRESENTLY A DAIRY FARM. N. of Hillsburgh on Hwy. 100 acres - solid brick 6 rm home, sturdy barn w/loose housing and steel clad insulated calf or pig barn with stable cleaner. All arable Guelph loam. Asking \$200,000. This farm cannot be sold separately from farm across the highway. Call Harry Burt. 85-767



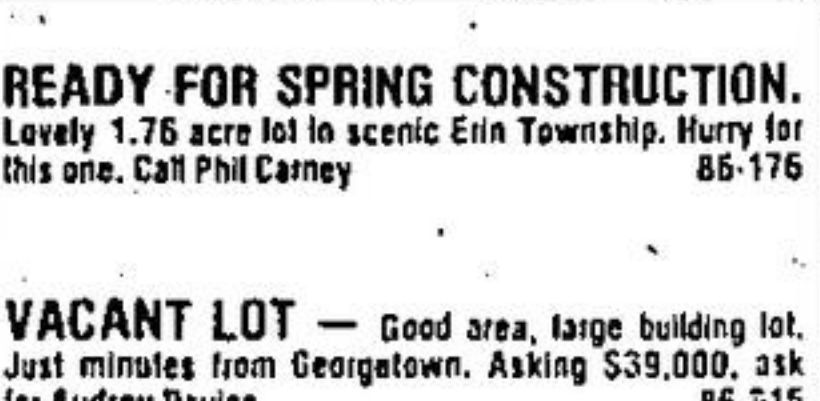
COLD SPRING WATER IN ABUNDANCE! N. of Erin - rolling 99 acres with good spring water at front and back. Parklike setting around this 2 sty 10 rm brick home with main floor family & laundry rms. Includes a bank barn, 1500 elevation w/view! Nice area - horse farm nearby. Listed \$259,000. Call Harry Burt 86-379



OPERATING DAIRY FARM 100 acres n. of Hillsburgh on Hwy. Elegant 9 rm brick home w/indear new family rm. addition. Sturdy bank barn, with 50 tie ups, pipeline milker and cotter included. Guelph loam soil all workable. Asking \$250,000. Cattle, quotas and machinery negotiable. Further info. call Harry Burt 85-766



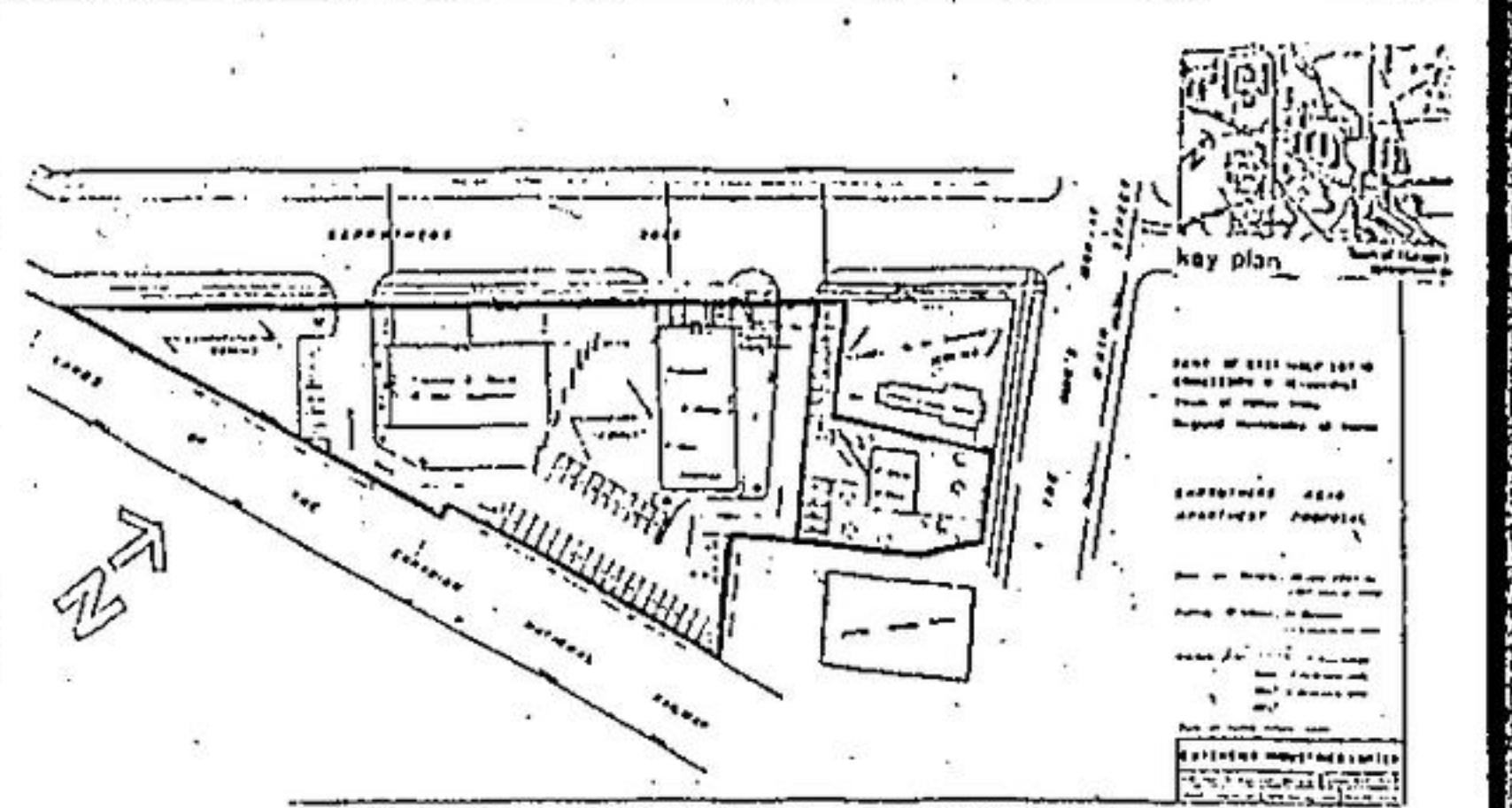
"SPARKLING NEW" in picturesque Erin situated on lovely one acre lots. Paved rd. 2 minutes to shopping, schools & golf. Featuring main floor family room & laundry. Quality construction by Watson Const. Call Phil Carney or Tom Comery 86-284



READY FOR SPRING CONSTRUCTION. Lovely 1.75 acre lot in scenic Erin Township. Hurry for this one. Call Phil Carney 86-176

VACANT LOT - Good area, large building lot. Just minutes from Georgetown. Asking \$39,000, ask for Audrey Davies 86-515

PICTURESQUE 12 acres \$59,900.00. Meadow, beautiful trees, ideal spring would make good pond. Nancy Kelman 877-5165. 86-301



2 SEPARATE PARCELS MULTI RESIDENTIAL COULD ACCOMMODATE 40 APT.

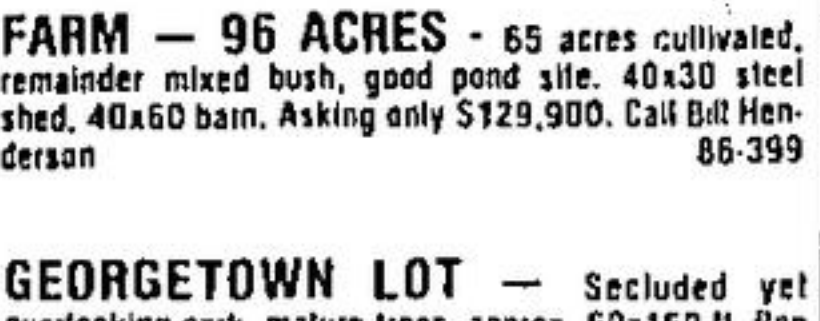
CALL PHIL CARNEY



COUNTRY STYLE - Walk to shopping, 3 bdrm, garage, almost 1/2 acre. Nancy Kelman 86-365



FOR WHOM THIS BELL TOLLS? The dinner bell on this 1864 stone farm home is now calling you! Picture yourself raising your family on this 96 acre farm. Building set on a hill w/view! Fresh air, pure water & nature are abundant! S. of Hillsburgh near Hwy. 24 & 25. 18 miles to Go Train! Call Harry Burt 86-231



FARM - 96 ACRES - 65 acres cultivated, remainder mixed bush, good pond site. 40x30 steel shed, 40x60 barn. Asking only \$129,900. Call Bill Henderson 86-399

GEORGETOWN LOT - Secluded yet overlooking park, mature trees, approx. 60x150 ft. Ron Lacey 86-410

NORTH OF 401. 80 acres vacant land. Pond site. Panoramic view. 50 acres workable. \$180,000. Call Bert Hutchinson 86-343

LOTS & ACREAGES IN ERIN AND AREA!

- \$58,900 - 10 acres near Ospringe on hardtop, seven cleared acres, slopes to bush where stream flows. 86-389
- \$64,900 - 50 acres - 1/2 arable rolling sandy loam, balance bush with stream, site for solar home 86-183
- \$74,900 - 100 acres fenced, 60 arable balanced mixed bush and pasture with flowing stream 86-402
- \$119,000 - 99 acres - excellent vegetable land - fronts on Hwy. 25. 10 acres of hardwood, very suitable for a horse farm. You be the judge! Call Harry Burt 85-593
- \$124,900. 125 acres close to Hillsburgh, rolling terrain with view, 5 1/2 acres. Hardwood - hills reforested - many possibilities. 86-333

YOUR CHOICE - CALL HARRY BURT.

FARMS - ERIN & AREA

- \$225,000 - South of Hillsburgh, stone home, bank barn and storage shed, all set on a hill with view. 96 acres - corner farm 86-231
- \$259,000 - North of Erin, 10 room brick home engulfed by sugar maples, pond in front, barn and 99 acres. 86-379
- \$200,000 - Highway 25 North of Hillsburgh - 6 room brick home, bank barn with steel covered pig or calf barn with cleaner - 100 acres. 85-767
- \$250,000 - Highway 25 North of Hillsburgh, 9 room, brick 2 storey (lovely) dairy barn with 50 ties, pipeline, cooler - 100 arable acres. 85-766

FOR DETAILS CALL HARRY BURT

Cathy Vorego 877-9436	Harry Burt 519-855-4579	Jora MacKinnon 877-1430	Herb Spitzer 877-9955	Marie Brossard 519-833-2588	John Kroezen 877-2722
Murray Smith 853-0315	Ursula Zeldler 877-8368	Marion Brown 877-5365	Alice Pokluda 1-849-1630	Fran Parker 877-8687	Bill Henderson 877-5638
Steve DeForest 877-5929	Tom Comery 519-855-4856	Ron Lacey 877-5684	Brenda Payton 877-7578	Pagey 1-553-4487	Joyce Vandellinder 877-8152
Reneadette Whillam 877-4936	Wilma Marshall 877-9207	Ev Patterson 877-9096	Margaret Sasek 877-7594	Olga Fedun-Foreman 877-5716	Audrey Davies 877-8357
Bert Hutchinson 877-3569	Nancy Kelman 877-4422	Janet Brandt 877-0973	Phil Carney 877-8937	Elaine Chatten 877-3579	Rinn Poulstrup, Mgr. 877-7858