

ARTHUR F. JOHNSON & ASSOCIATES LIMITED REALTOR

877-5165

TOR: 453-1286

**247 Guelph St.,
Georgetown**



NEW LISTING. - Sharp 3 bedroom townhouse, super clean, beautifully decorated, 2 baths, finished rec room, lovely landscaping at front, and more. Must be seen. Asking \$75,900. Ask for Audrey Davies.



NEW LISTING - Only \$105,900, three bedroom eat-in kitchen with extra cupboards, built-in dishwasher, finished RR, wet bar, extra bath. Call Ev Patterson. 86-394



2 BEDROOM REMODELLED BRICK BUNGALOW. - Formal dining room, 1 bdrm new apt, 2 stoves & 2 fridges, walk to Go Train. \$104,900. Call Herb Spitzer 86-386



AN ENGLISH GARDEN surrounds this lovely 3 bedroom family home. Walk to the park, schools and amenities. New at \$123,900. Call Marie-France Brossard today. 86-400



REDUCED TO \$115,000 Quick closing on this charming older home. Features huge living room with fireplace, four bedrooms, 2nd kitchen, 2 baths, nice fenced yard. Call Bernadette Whillam 86-381



ELEGANT EXECUTIVE HOME in prestigious area \$279,000. Located on quiet court, this home has special features: Spiral oak staircase, 4 bedrooms, master has w/closet w/4 pce ensuite, country kit, w/walkout to prof. landscaped lot. Main fl. fm. w/fireplace, laundry rm. & den. Plus, many more features. To view call Janet Brandt.



"THAT COUNTRY FEELING" 5 bdrm semi on 30'x256' lot, 14'x20' heated workshop in yard, mature trees, even a stream running through property. Close to schools, minutes to Brampton GO train. \$122,900. Fran Parker. 86-403



PRESTIGIOUS "OLDE TOWNE" BRAMPTON... CENTRE HALL PLAN. Luxury abounds in this 4 br featuring F.R. with F.P., cent. air, cent. vac. Call Olga Foreman 86-404



SUPER SHARP SEMI! Open design, 3 bdrms, 2 bths, garage, sliders to deck. Backing onto park, quality new windows. \$135,500. Dora MacKinnon 86-409



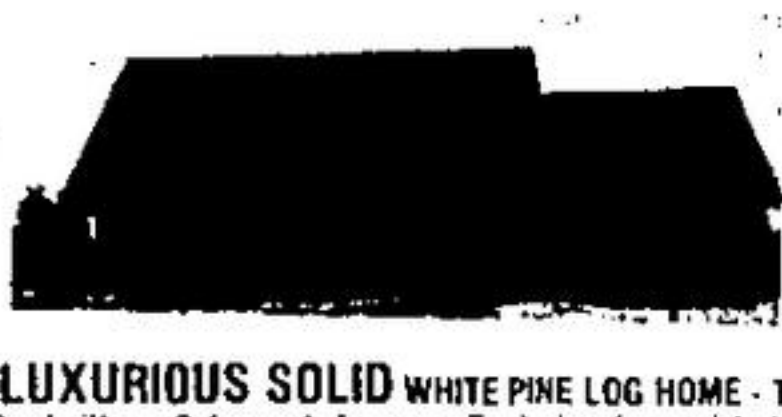
TERRA COTTA with Commercial Zoning? Impossible you say, I've got it. Large shop. Super clean home on 3 1/2 acres. Call Fran Parker. 86-275



RAISE YOUR FAMILY in a Good Neighbourhood. Close to all amenities in a 4 BR home w/finished RR and private fenced yard. Garage, OBL paved drive. \$145,900. Alice Pokluda 86-373



BEAUTY... Detached on nice fenced lot, 3 bdrms, 2 baths, rec rm., new flooring, attractive decor. \$117,500. Call Dora MacKinnon. 86-396



LUXURIOUS SOLID WHITE PINE LOG HOME - To be built on 2.4 wooded acres. Featuring jacuzzi bath, floor to ceiling stone F.P., pine kit., cupboards and all pine doors & trim, 2" thick pine floors, 4 bed & 21'x15' room w/skylights over garage, sunken L.R., 40' deck and so much more! \$235,000. Call Olga Foreman for details. 86-387

Creemore 100 acs.

A TREE & ROLLING property for your summer & winter retreat. Minutes from the charming village of Creemore & skiing at Devils Glen. The panoramic view will knock your socks off. Incredible! \$89,900. Call Tom Comery 86-331



IMMACULATE CARDINAL MODEL... 3 br, eat-in kit., remodelled bath, entry floor in new neutral ceramic tile, large deck off 50x110 fenced yard. Call Ev Patterson for more details. 86-375



INVEST IN and enjoy your own home. LR, DR, 3 BRs on nice tree-lined street. Close to schools, stores and GO. \$93,900. Call Alice Pokluda 86-383



ATTRACTIVE - NEARLY NEW 3 bedroom bungalow on large 8 plus acres, with large pond. Lots of extras. Must be seen. For appointment to view call Bill Henderson 86-398



REDUCED TO \$149,900 main floor family rm, 2 bath, finished rec room, nicely landscaped lot with 7 fruit trees. Central air, quiet crescent location. Call Ursula Zeidler 86-362

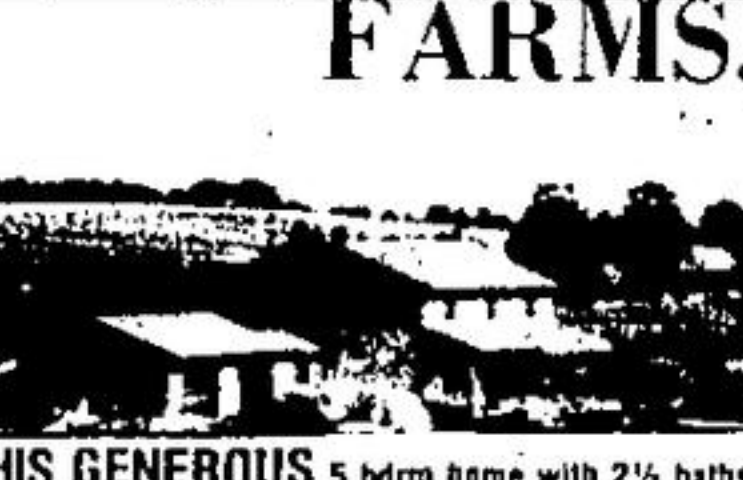
6 acre Homesite

TWO MINUTES on paved road from Rockwood. Tranquil 6 acres of fragrant cedar woods awaits your country retreat or family home. Tom Comery 86-406

FARMS, LOTS & ACREAGES



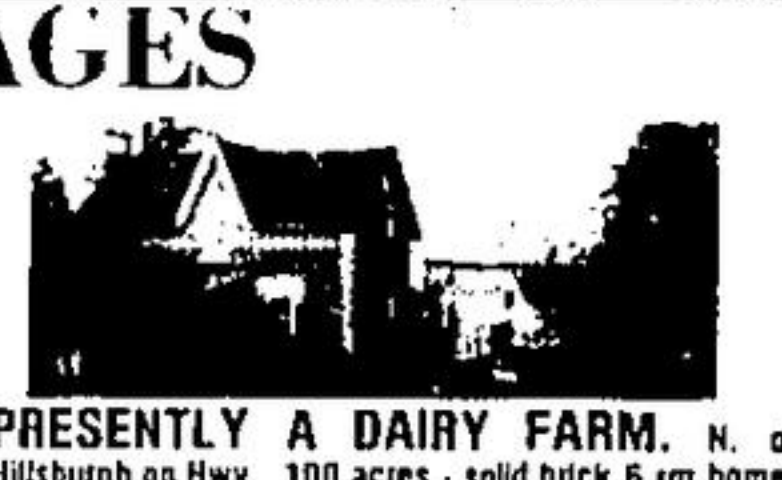
HORSE FARM - \$390,000.00 Sensational 26 acre horse farm, 48 stables, 1 mile training track. Staff accommodation. 4 bedroom main house with separate office. Call Janet Brandt. 86-857



THIS GENEROUS 5 bdrm home with 2 1/2 baths, main floor family room and formal dining area is peacefully settled on 37 1/2 gently rolling acres enhanced by a free flowing trout stream and pond. Listed at \$189,500. Call Fran Parker for your personal viewing. 86-352



QUICK POSSESSION. Spend a White Christmas in the country. Great in-law suite potential, so why not invite them along. 10 acres of beauty & serenity, 3 br house plus, plus, plus \$189,900. It's waiting for YOU! CALL Marie-France Brossard for a personal tour. 86-298



PRESENTLY A DAIRY FARM. N. of Hillsburgh on Hwy. 100 acres - solid brick 6 rm home, sturdy barn w/loose housing and steel clad insulated calf or pig barn with stable cleaner. All arable Guelph loam. Asking \$200,000. This farm cannot be sold separately from farm across the highway. Call Harry Burt. 86-767



COLD SPRING WATER IN ABUNDANCE! N. of Erin - rolling 99 acres with good spring water at front and back. Parklike setting around this 2 sty 10 rm brick home with main floor family & laundry rms. Includes a bank barn, 1500 elevation w/view! Nice area - horse farm nearby. Listed \$259,000. Call Harry Burt 86-379



OPERATING DAIRY FARM 100 acres n. of Hillsburgh on Hwy. Elegant 9 rm brick home w/inert new family rm, addition. Sturdy bank barn, with 50 ties ups, pipeline milker and colter included. Guelph loam soil all workable. Asking \$250,000. Cattle, quotas and machinery negotiable. Further info. call Harry Burt 86-766

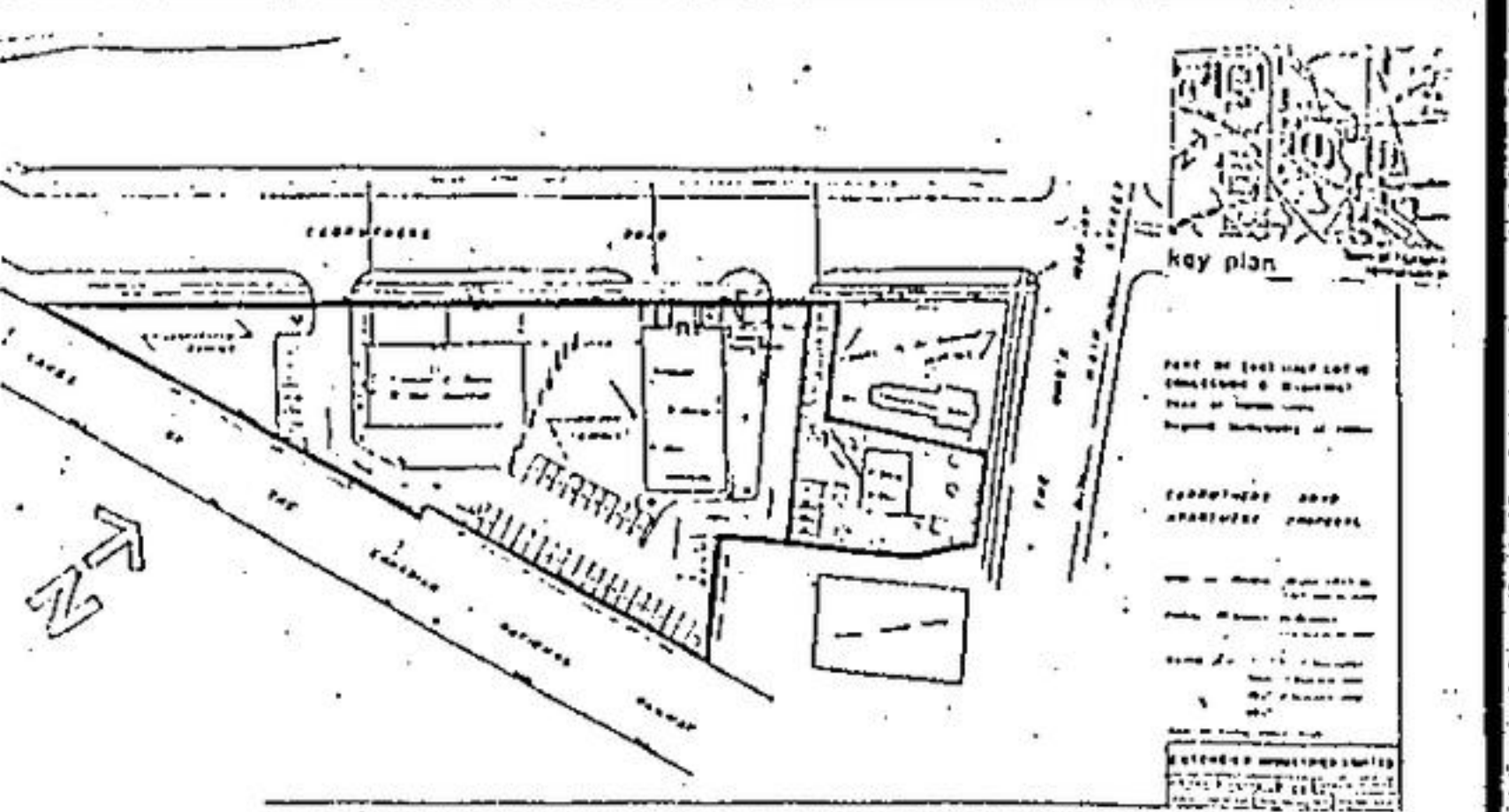


"SPARKLING NEW" in picturesque Erin situated on lovely one acre lots. Paved rd. 2 minutes to shopping, schools & golf. Featuring main floor family room & laundry. Quality construction by Watson Const. Call Phil Carney or Tom Comery 86-264

READY FOR SPRING CONSTRUCTION. Lovely 1.76 acre lot in scenic Erin Township. Hurry for this one. Call Phil Carney 86-176

VACANT LOT - Good area, large building lot. Just minutes from Georgetown. Asking \$39,000. ask for Audrey Davies 86-315

PICTURESQUE 12 acres \$59,900.00. Meadow, beautiful trees, ideal spring would make good pond. Nancy Kelman 877-5165. 86-301



**2 SEPARATE PARCELS
MULTI RESIDENTIAL
COULD ACCOMMODATE 40 APT.
CALL PHIL CARNEY**



COUNTRY STYLE - Walk to shopping, 3 bdrm, garage, almost 1/4 acre. Nancy Kelman 86-365



FOR WHOM THIS BELL TOLLS? The dinner bell on this 1864 stone farm home is now calling you! Picture yourself raising your family on this 96 acre farm. Building set on a hill w/view! Fresh air, pure water & nature are abundant! S. of Hillsburgh near Hwy. 24 & 25. 10 miles to Go Train! Call Harry Burt 86-231

FARM - 96 ACRES - 65 acres cultivated, remainder mixed bush, good pond site. 40x30 steel shed, 40x60 barn. Asking only \$129,900. Call Bill Henderson. 86-399

NORTH OF 401. 80 acres vacant land. Pond site. Panoramic view. 50 acres workable. \$180,000. Call Bert Hutchinson 86-343

LOTS & ACREAGES IN ERIN AND AREA!

FARMS - ERIN & AREA

- \$58,900 - 10 acres near Ospringe on hardtop, seven cleared acres, slopes to bush where stream flows 86-389
- \$64,900 - 50 acres - 1/2 arable rolling sandy loam, balance bush with stream, site for solar home 86-183
- \$74,900 - 100 acres fenced, 60 arable balanced mixed bush and pasture with flowing stream 86-402
- \$119,000 - 99 acres - excellent vegetable land - fronts on Hwy. 25. 10 acres of hardwood, very suitable for a horse farm. You be the judge! Call Harry Burt 86-593
- \$124,900. 125 acres close to Hillsburgh, rolling terrain with view, 5 1/2 acres. Hardwood - hills reforested - many possibilities. 86-333

- \$225,000 - South of Hillsburgh, stone home, bank barn and storage shed, all set on a hill with view. 96 acres - corner farm 86-231
- \$259,000 - North of Erin, 10 room brick home engulfed by sugar maples, pond in front, barn and 99 acres. 86-379
- \$200,000 - Highway 25 North of Hillsburgh - 6 room brick home, bank barn with steel covered pig or calf barn with cleaner - 100 acres. 86-767
- \$250,000 - Highway 25 North of Hillsburgh, 9 room, brick 2 storey (lovely) dairy barn with 50 ties, pipeline, cooler - 100 arable acres. 86-766

YOUR CHOICE - CALL HARRY BURT.

FOR DETAILS CALL HARRY BURT

John Kroezen 877-2722	Dora MacKinnon 877-1430	Harry Burt 519-855-4579	Calhy Perago 877-9436	Herb Spitzer 877-9955	Marie Brossard 519-833-2568
Bill Henderson 877-5636	Marion Brown 877-5365	Ursula Zeidler 877-8368	Alice Pokluda 853-0315	Murray Smith 1-849-1630	Fran Parker 877-8687
Joyce Vandelder 877-8152	Ron Lacey 877-5684	Tom Comery 519-855-4856	Murray Smith 877-5929	Brenda Payton 877-7578	Pager 1-553-4487
Audrey Davies 877-8357	Ev Patterson 877-9096	Wilma Marshall 877-9207	Steve DeForest 877-4936	Margaret Sasek 877-7594	Olga Fedun-Foreman 877-5716
Phil Carney 877-8937	Janet Brandt 877-0973	Nancy Kelman 877-4422	Bert Hutchinson 877-3562	Finn Poustrup, Mgr. 877-7858	Elaine Chatten 877-3579