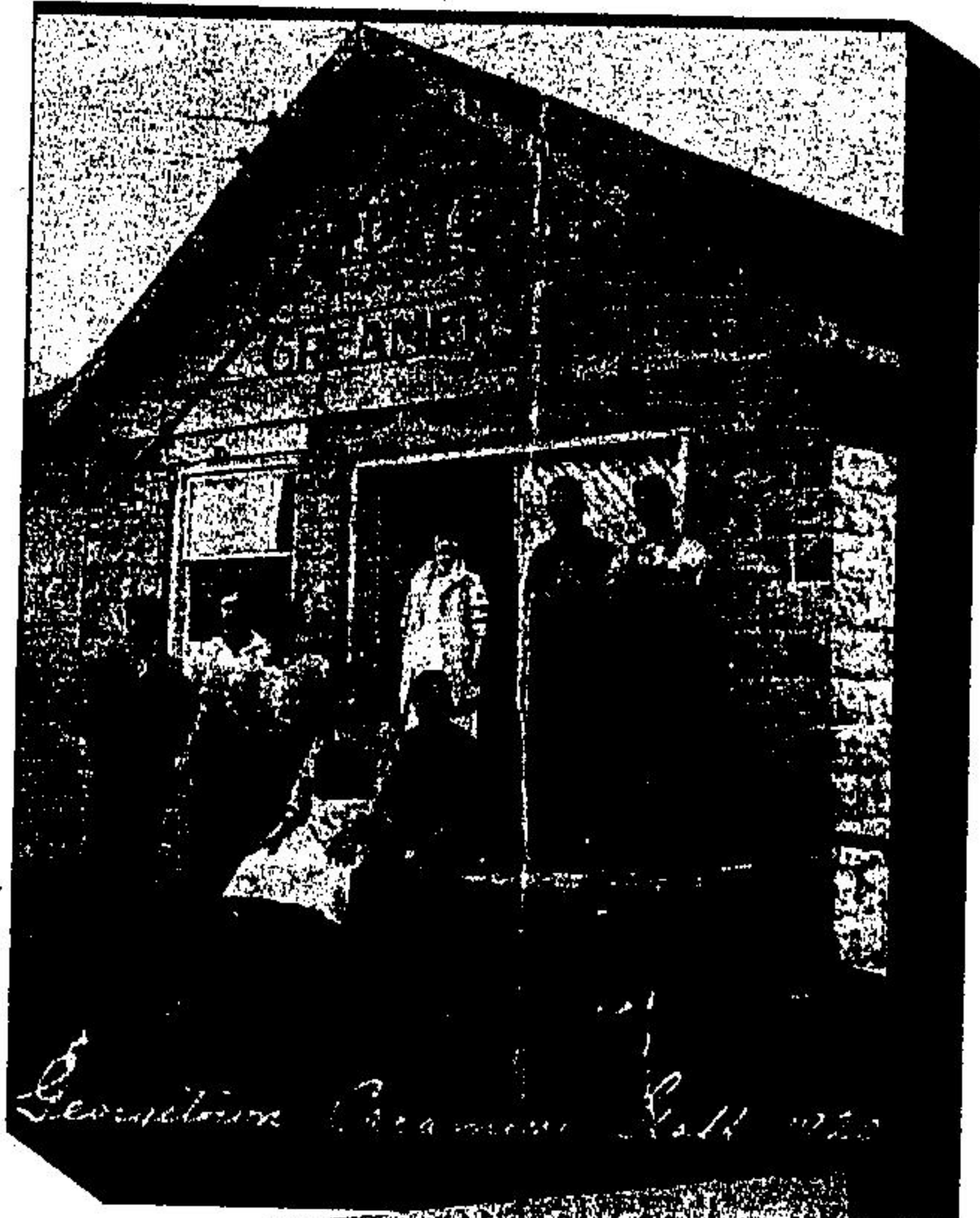
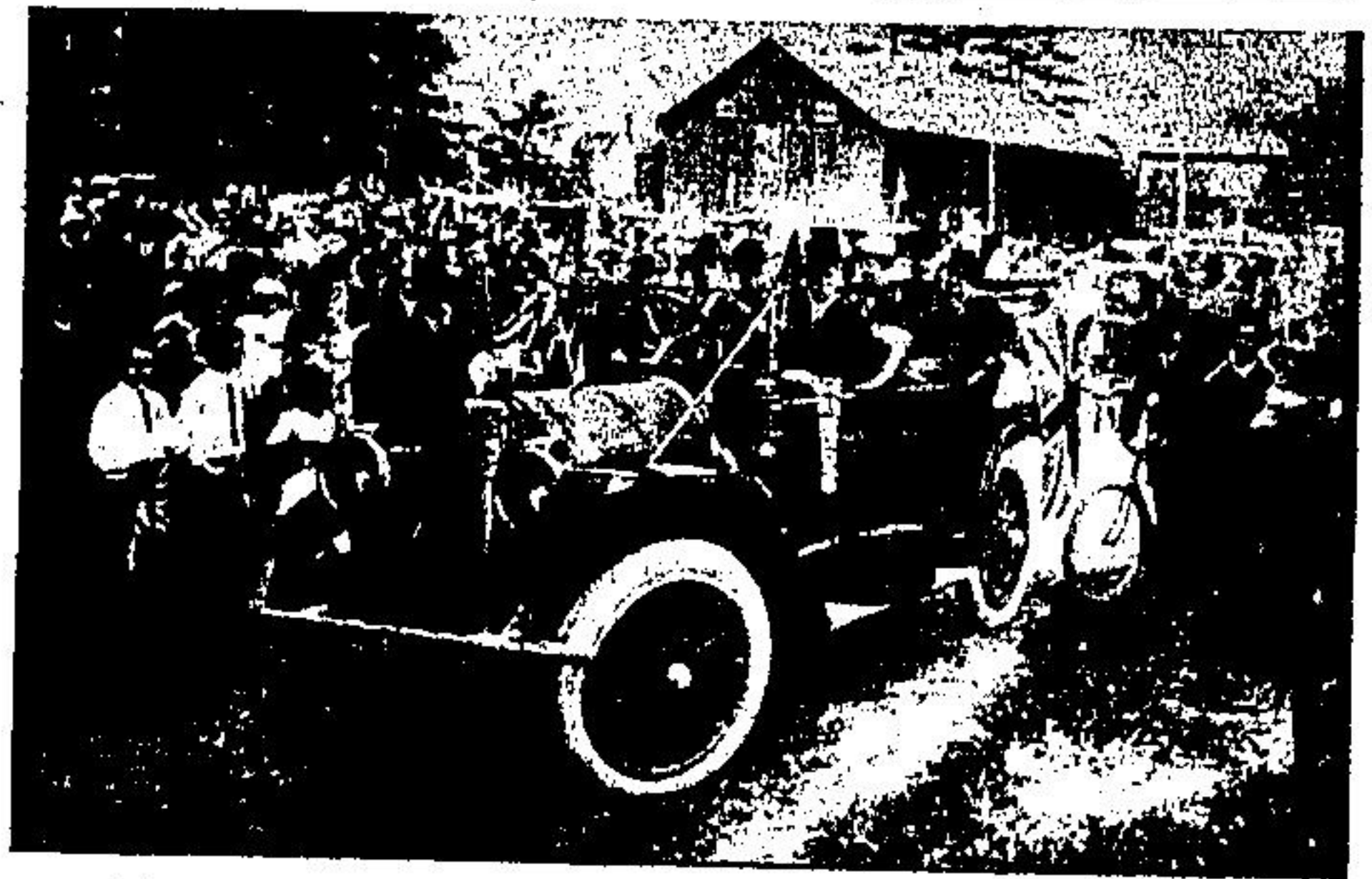


# PLACES IN GEORGETOWN'S PAST ...



*Georgetown Creamery, Fall 1920*



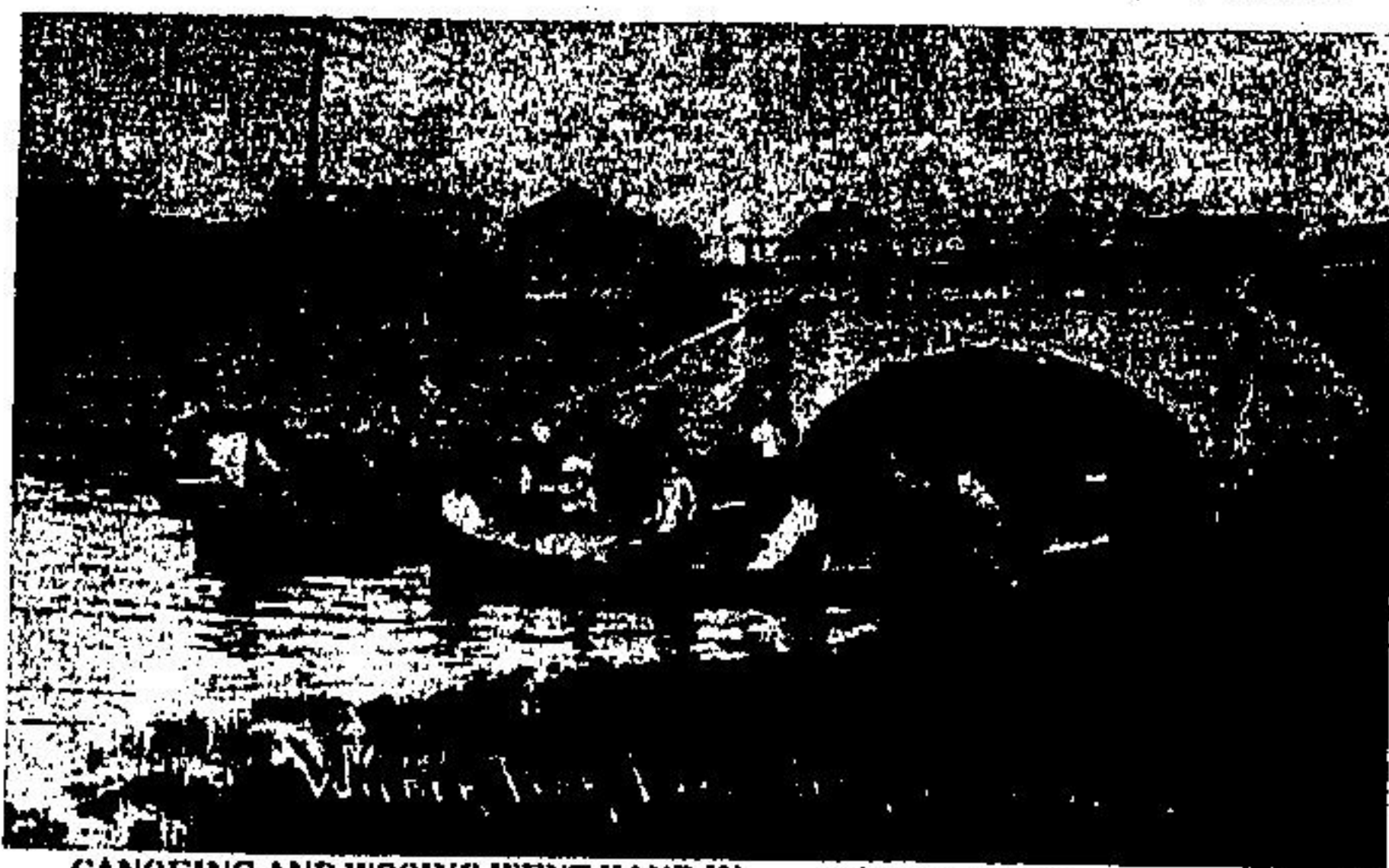
RETURNING HOME VICTORIOUS FROM THE FIRST WORLD WAR



THE HOLLYWOOD HOTEL, IN NORVAL



EARLY DAYS AT THE TELEPHONE EXCHANGE



CANOEING AND WOOING WENT HAND IN HAND AT WILBER PARK LAKE IN GEORGETOWN



THE BALLINAFAD STAGE