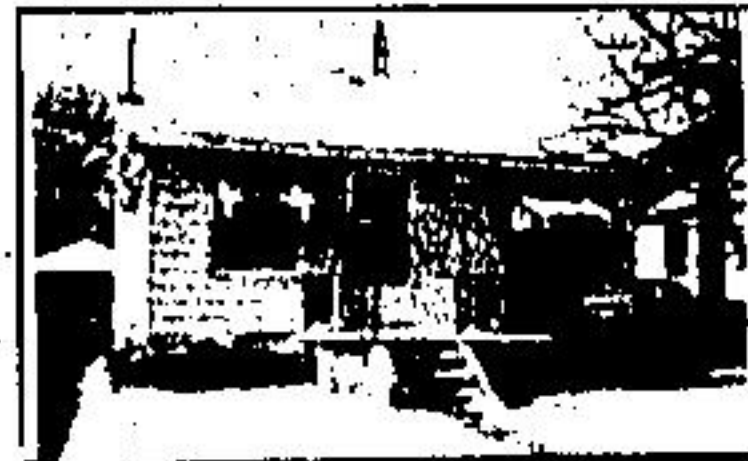




1/2 ACRE TREED PROPERTY. Fantastic buy at \$82,900. This cozy 2 bedroom home has been nicely renovated. Features a freshly decorated bathroom and a kitchen. Excellent location, close to school and shops. Perfect starter or retirement home. Excellent financing. Call Prier or Yvonne at 877-5213. 4250



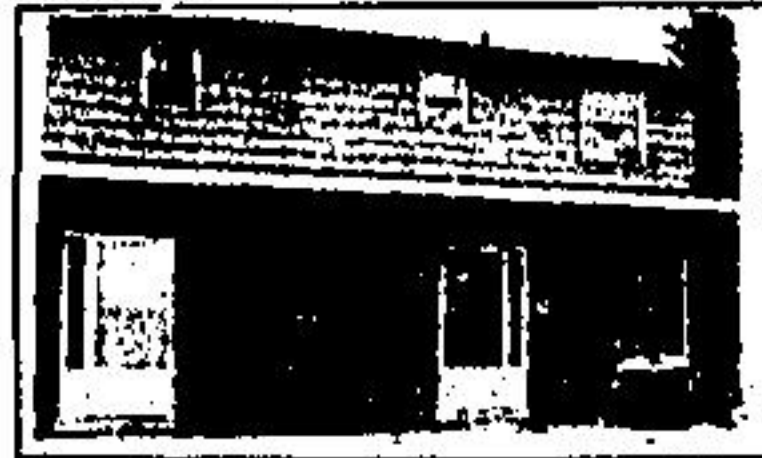
SO YOUR FAMILY IS GROWING . . . Here's the house for you. Four bedroom backpack with main floor family room and fireplace backing onto park. Close to schools. Asking only \$99,900. For more information please call Dave Seal at 877-5213. 4417



LITTLE CHARMER PERFECT FOR THE June bride. An adorable home for beginners or for the retirement couple - squeaky clean and in great location. For personal service please call Ellen Hogg at 877-5213. 5003



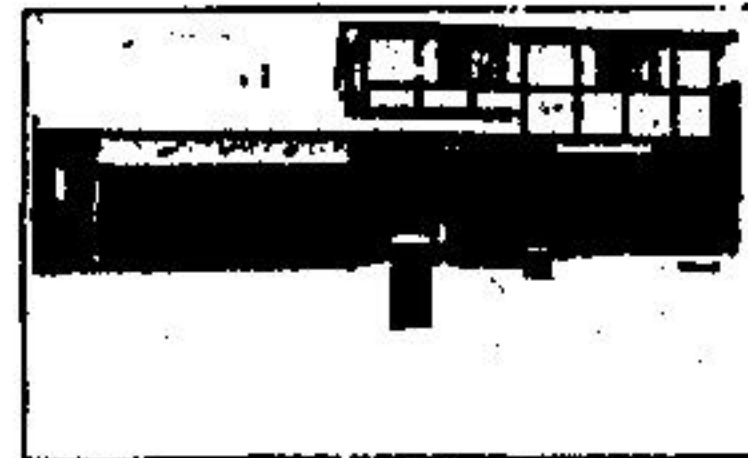
FOUR BEDROOMS — Lovely 4 bedroom home, 2 baths, beautiful rec room with bar, tastefully decorated, hardwoods throughout. Asking \$93,500. Call Carman Mackie at 877-5213. 4372



SUPER STARTER \$44,900. Completely finished head to toe. End unit townhouse. Good, assumable mortgage. Call Joan Thomson at 877-5213 or 853-2334. 4420



NEW HOME — Similar to picture - now being built just north of Glen Williams. Priced at \$129,900. This 3 bedroom raised bungalow is brick and aluminum construction and has a 2 car garage. Set on .82 acre lot it has a fireplace and a walkout from the rec room. Call Don Schenk at 877-5213. 4148



WELCOME HOME to this spacious 4 bedroom, 2 story which features a double garage, main floor laundry, covered deck and finished family room with walkout to a sun porch and ravine lot. To view this fine home listed at \$83,900. Please call Heather Whiting at 877-5213. 4427



EXECUTIVE HOME — EXECUTIVE AREA. This beautiful 5 bedroom home is set in Georgetown's "Park" area and features 3 baths, 2 fireplaces, main floor laundry, built-in dishwasher, double garage and walk-out to a covered stone patio with built-in bar-b-que. Priced at \$129,900. Call Mable Adams or Fred Harrison at 877-5213. 4233

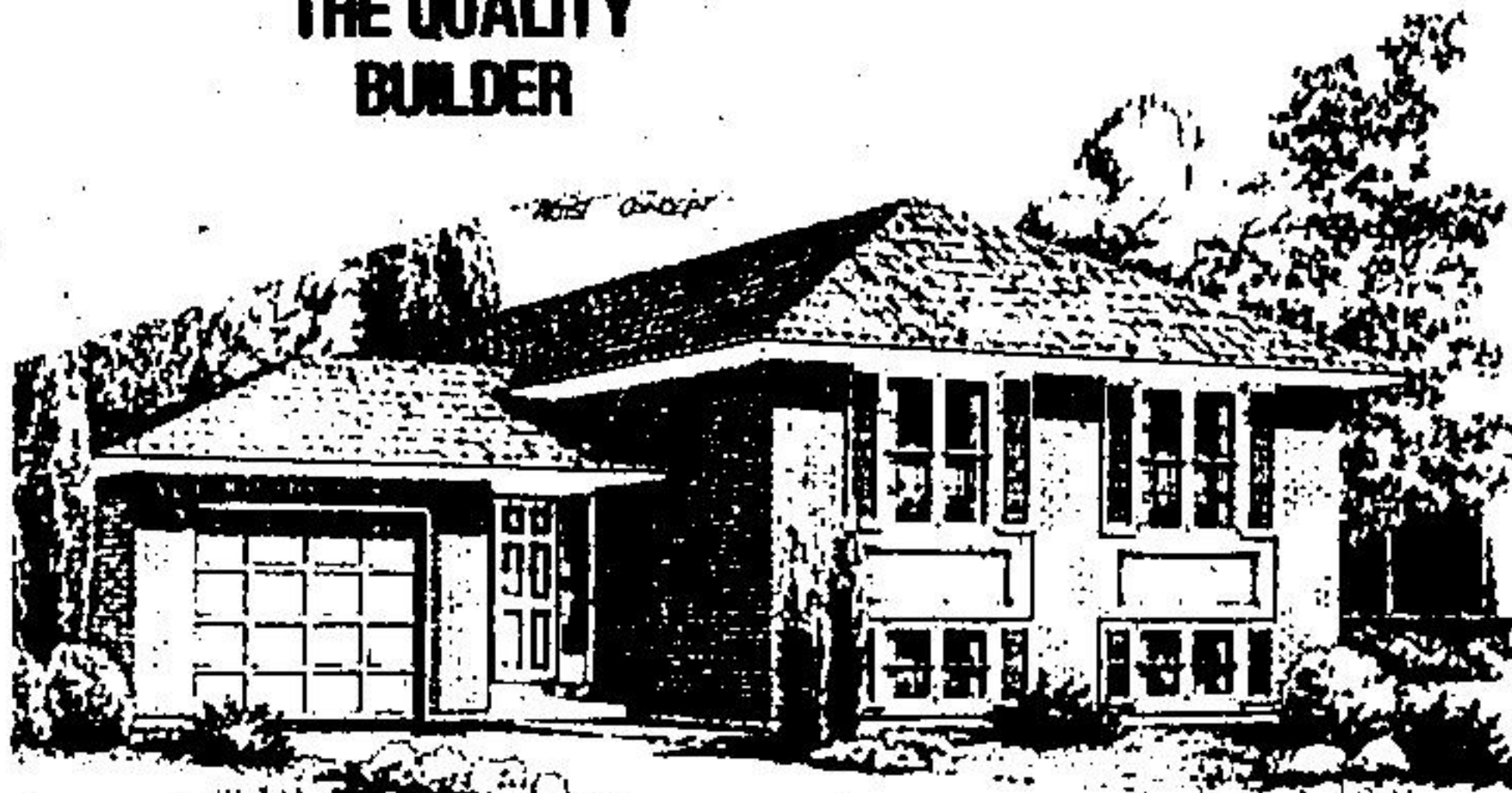
RE/MAX

SUBURBAN REALTY INC.

Presents . . .

Calvert-Dale Homes

THE QUALITY BUILDER



ADAMS COURT

IN ACTON

FEATURES

OVERSIZED GARAGE
WALKOUT BASEMENTS
CUL-DE-SAC LOTS
RANCH AND BUNGALOW
STYLE HOMES
UPGRADED KITCHEN
CABINETS

TRIVIA

Important Plankton

Euphausia superba, a protein-rich crustacean that may be the world's most important plankton species, has 11 pairs of legs. It swims with the five back pairs and feeds with the six forward pairs.



Insect Territories

A single colony of 300,000 weaver ants in tropical Africa, Asia, or Australia can maintain 150 nests in as many as 20 trees and patrol 1,600 square meters. It's one of the largest insect territories known. National Geographic says.

ASK ABOUT OUR GUARANTEED TRADE-IN PROGRAM

SITE OFFICE HOURS:

SAT. — 1 P.M. — 5 P.M.

SUN. — 1 P.M. — 5 P.M.

FOR MORE INFORMATION CALL

877-5213

