

# MORTGAGE GUIDE

All mortgage rates effective October 21st, 1983. Rates are subject to change without notice. Please phone bank or Loan Co. for verification. If we missed you please contact The Herald for publication of your mortgage rates.

**Canada Trust, Main at James 877-2266**

6 month open 10½%      3 years 12½%  
 1 year 10¾% closed      4 years 12¾%  
 2 years 11¼%      5 years 13%

**Cabot Trust Co., Brampton Shoppers World 457-7330**

1 year term 11%      3 year term 12¾%  
 2 year term 11¼%      4 year term 13%  
    5 year term 13¼%

**Central Trust Co., 9 Queen E., Brampton 457-6060**

6 months 10½%      3 year term 12¾%  
 1 year 10¾%      4 year term 13%  
 2 year term 11¼%      5 year term 13¼%

**Victoria & Grey Trust, Main St., Brampton 457-7330**

6 month 10½% open      3 year 12¾%  
 1 year 10¾%      4 year 13%

**Standard Trust Co., 8 Main S., Brampton 457-4448**

1 year 10¾%      3 year 13¼%  
 2 year 11¼%      5 year 13¾%

**National Trust, 364-9141**

1 year 10¾%  
 2 year 11¼%  
 3 year 12¼%  
 4 year 12¾%  
 5 year 12¾%  
 6 month open 10½%  
 Variable rate open 1-5 yr. terms 11%

**Halton Community Credit Union, Mac's Plaza 877-9266**

273 Queen St., Ancaster 49-853-  
 12¼% Open      variable  
 No int. penalty      pre-payment      weekly payment plan

**Guaranty Trust, Rockwood Mall, Mississauga 625-8400**

6 month - 10¼% closed      3 year 12¾%  
 1 year 10¾%      4 year 13%  
 2 year 11¼%      5 year 13¼%

**Bank of Montreal, 294 Georgetown 877-5141**

1 year bonus free      3 year 12¾%  
 2 year 10¾%      4 year 12¾%  
 3 year 11¼%      5 year 13%

**Bank of Nova Scotia, 2 Mountainview S. 877-6995**

1 year 10¾%      4 year repayment 13¼%  
 2 year 11¼%      5 year repayment 13½%

**Canadian Imperial Bank of Commerce, 82 Main 877-2231 & Delrex Market Mall 877-6963**

1 year 10¾%      4 year 12¾%  
 2 year 11¼%      5 year 13%  
 3 year 12¼%

**Royal Bank, 83 Main S. 877-5181**

10¾% 1 year reg. repayment      4 year 12¾%  
 2 year 11¼%      Base rate, variable 11¼%  
 3 year 12¼%

**Toronto Dominion Bank, 28 Main St. S., Georgetown 877-6941**

1 year 10¾%      Base rate variable 11%  
 2 year 11¼%  
 3 year 12¼%  
 5 year 13%

SAVE ON SUBLET — 6,000 sq. ft. modern air-conditioned, carpeted offices. Large storage or manufacturing area. Sprinkler system throughout building. Call Rud Whiting - 877-5213. 3266

EXCELLENT OPPORTUNITY. If you're looking for a thriving business and good investment in Georgetown now is your opportunity. For all details call Jeanne Servos - 877-5213. 3264

INCOME PROPERTY in Georgetown. 4 bay car wash on good commercial property. 100 ft. frontage. Asking \$229,000.00. For information call Mal Dodge or Ken DeRose at 877-5213. 3221

COMMERCIAL SPACE — 335 sq. ft. Call — 877-5213. 3199

COMMERCIAL SPACE — 500/sq. ft. Call — 877-5213. 3200

BUSINESS ONLY — \$66,900. Fast Food - 1500 sq. ft. Call Bruce Elmslie - 877-5213. 3205

COMMERCIAL SPACE — 280/sq. ft. Call 877-5213. 3122  
 BUSINESS FOR SALE — Two locations - Georgetown & Meadowvale. Call Rud Whiting for details - 877-5213. 3229

COMMERCIAL SPACE — 475/sq. ft. Call - 877-5213. 3124

**LOTS**

INDUSTRIAL PARK — Georgetown - Vacant - \$10,000. Call Dave Seal - 877-5213. 3082

TWO LEFT — Building lots on Heslop Court. \$59,000. each. Call — 877-5213. 3257

BUILDING LOTS — Two only 44,900 each. Call Peter or Yvonne - 877-5213. 3260

RAVINE LOTS — Five available. Services to lot line, underground hydro, natural gas and cable T.V. Located in one of Georgetown's most scenic areas. Priced from \$65,500. Call Rud Whiting - 877-5213. 3223

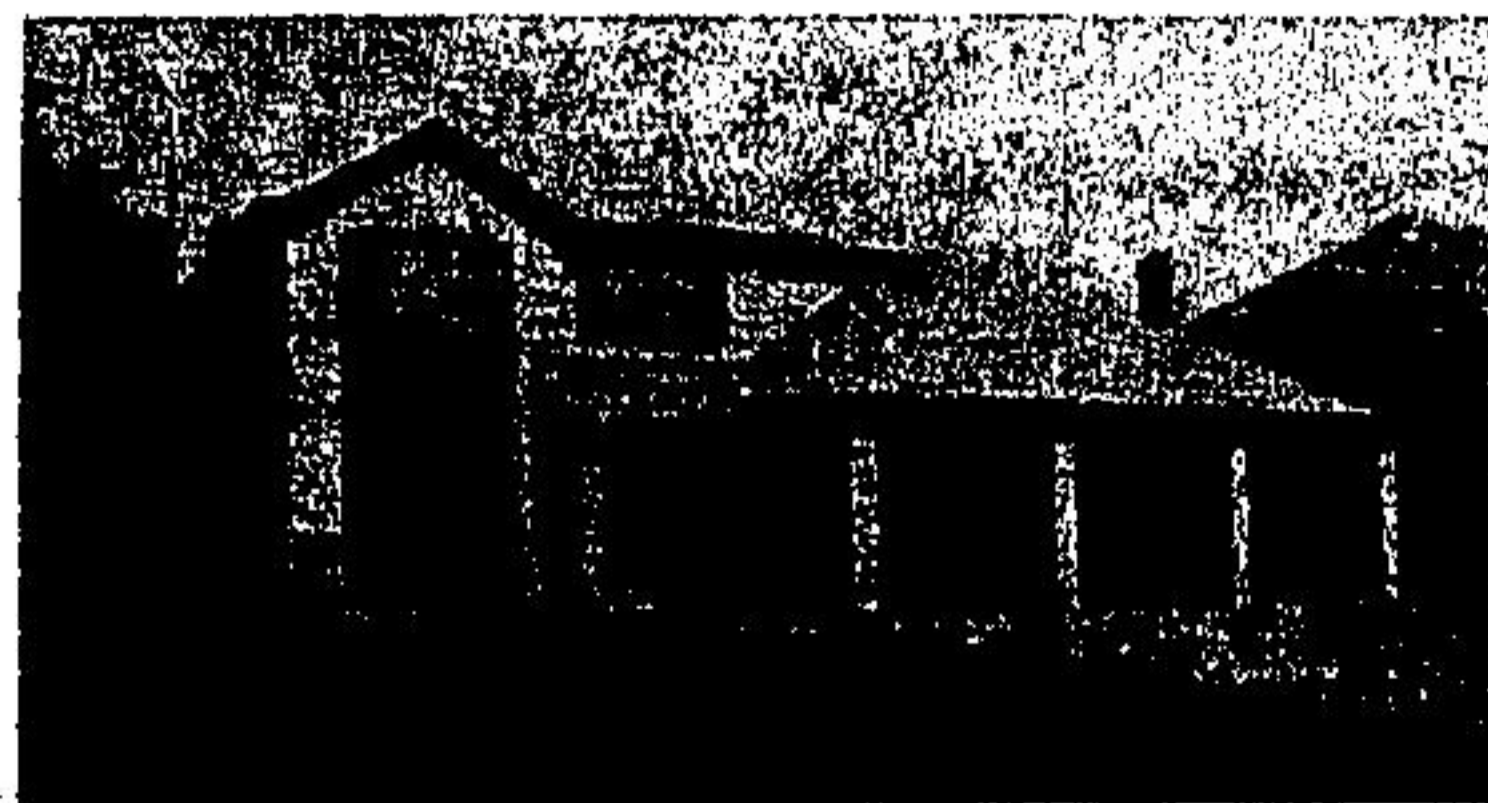


**300 GUELPH ST. GEORGETOWN**

(No. 7 Hwy. east end of Georgetown in the Mac's Milk Plaza across from the Georgetown Motor Inn).

## OPEN HOUSE

**SUNDAY, OCT. 30 /83 — 1 PM-4 PM**



**HESLOP COURT**

**QUALITY CUSTOM HOME**

**RAVINE LOT — CALL JIM AKERS — 877-5213**

**877-5213**

3007305