



Chickens are winner, and the Optimist Drug Abuse Committee selected (front, left to right) Debby Welling, Grade 8, of Centennial School, Graham McNeil, Grade 4, of George Kennedy School, Patricia Oosterhof, Grade 5, of Georgetown Christian School, (back, left) Jennifer Van Raamsdank, Grade 8, and Esther Gerrits, Grade 7, of Georgetown Christian School as the top winners in each grade for the best overall essay or story from all Georgetown schools. Seven schools with students in Grades 4 to 8 participated in the competition, with the top winner for each grade invited to a special Optimist Father and Kid Night April 12 where they were presented with their prizes.

## Museum Friends

A meeting reactivating the Friends of the Halton Museum will be held on Thursday, April 28, 1983 at 7:30 p.m. in the Museum located in Kelso Conservation Area, Milton. The Friends is the volunteer group for the museum.

Although the Friends have not been active in the past year, the pending provincial bi-centennial celebrations plus the museum's plans to make the institution a vital, dynamic cultural centre in Halton, makes it imperative that the institution be supported by members of the community, according to Ernie Buchner, Curator of the Museum. The Friends is a good vehicle for people to become involved.

For further information call the Museum at 878-3232.



At the Grand Prix Kub Kar Craze, thirty cubs from North Halton District attended the Regional Rally held in Milton recently. (Left to right) Steve Hayden, won second place for design of his Kub Kar, Todd McGivern won second place for fastest Kub Kar - tied with Chris House of 1st Norval - and also attending the Rally was David McDonald and David Chambers. Cubmaster Ken Nokes was at the event to present the pack. (Photo by Jean Layman)

## CUESTA is now off the presses

The seventh edition of CUESTA, the Niagara Escarpment Commission's Information magazine, is now off the press and available at N.E.C. offices in Georgetown, Grimsby and Clarksburg. This issue marks the tenth anniversary of the formation of the Niagara Escarpment Commission which was entrusted with the preparation of a plan that would protect the Niagara Escarpment as a continuous natural environment. The release, in February 1983, of the Hearing Officers' Report represents a major step in the finalization of that plan.

CUESTA provides an update on the twenty-six month hearing process together with an overview of the plan approval process in addition to highlighting articles of general interest.

The lead story in the 48-page publication is a profile on artist, naturalist and Commission member, Robert Bateman. The front cover in addition to a four-colour centrespread features the work of this internationally-renowned artist.

A complementary article features an exclusive interview with artist-naturalist, Roger Tory Peterson, author of the enduring birdwatchers' handbook - a Field Guide to the Birds.

**Barry D. Timleck**  
Chartered Accountant

CARRETAL BUILDING  
SUITE 301  
16 Mountainview Rd. S.  
GEORGETOWN

877-8948

# HOME OF THE WEEK

SPLIT LEVEL HOME WITH STYLE, SPACE & CONVENIENCE

**CUSTOM INSTALLED VACUUM SYSTEMS**  
G.K. THOMPSON & CO.  
877-7454

Your home deserves the very best!

**W.C.H. PAINTER AND DECORATOR**  
Installation of Ceramic Tile Work  
NO JOB TOO SMALL  
Rebuild Bathrooms & Kitchens  
FREE ESTIMATES  
877-5530

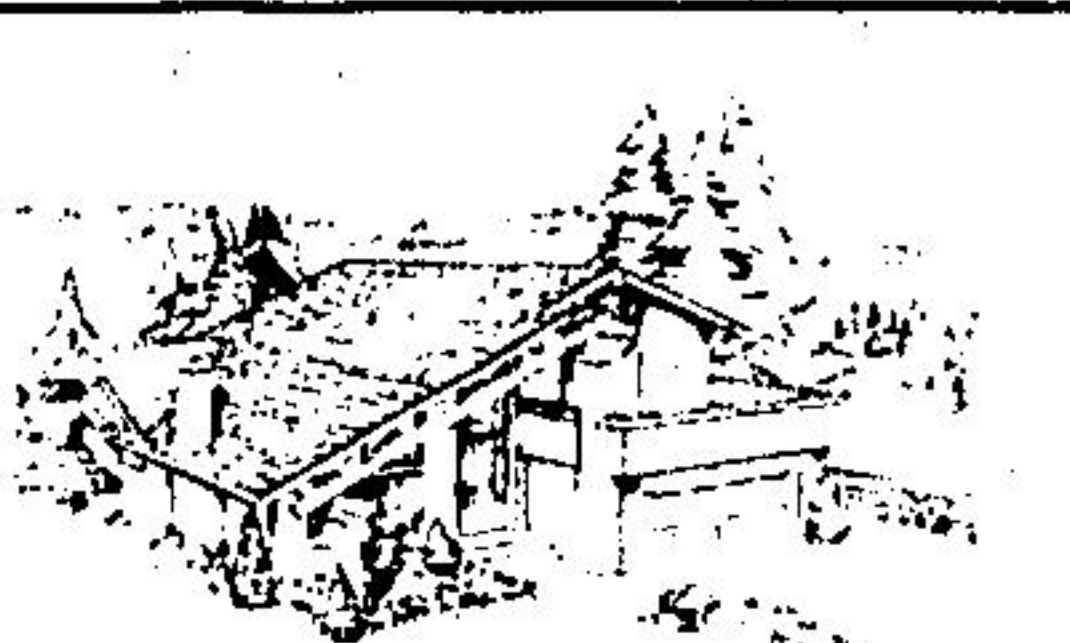
**E.S.L. CARPENTRY**  
Specializing in HOME RENOVATIONS  
Experts in Kitchen & Rec Rooms  
Reasonable Prices  
878-5104

**DELREX Aluminum Limited**  
Aluminum Awning  
Eavesstroughs  
Siding  
Canopies  
Storm Doors  
Windows  
Soffit  
Fascia in Living Colours  
Specializing in replacement windows & patio doors

877-5383

**HALTON DOOR SYSTEMS Ltd**  
Sales & Service to all types of overhead garage doors and electric operators, radio controls and accessories.  
All Work Fully Guaranteed

877-1764



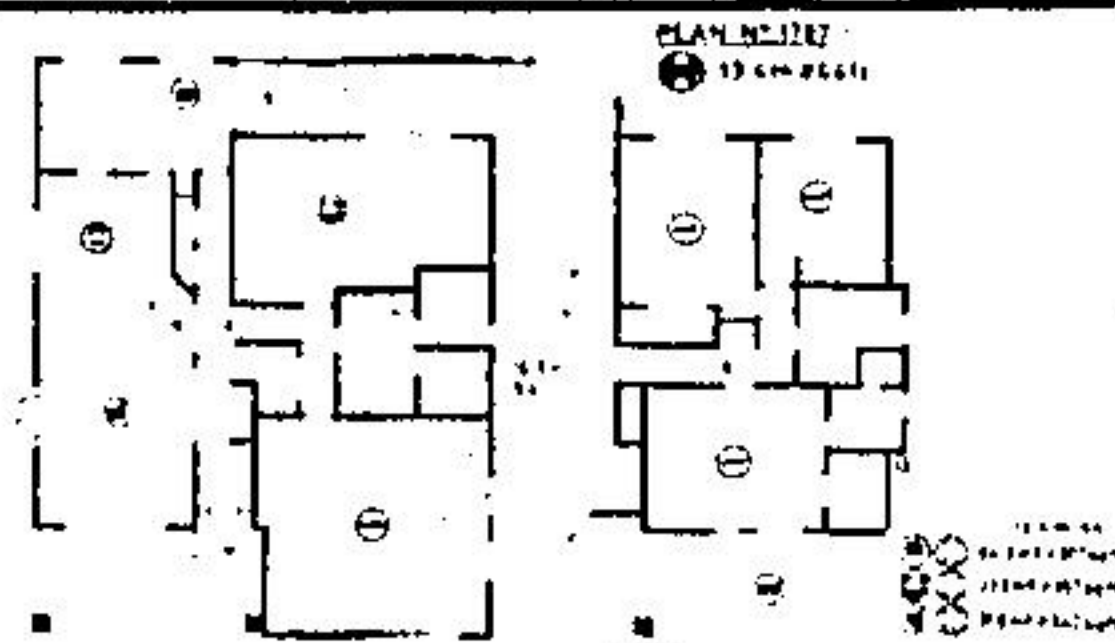
This split-level home design is perfectly suited to the medium frontage residential building lot and provides almost 2,800 square feet of well-organized finished floor space on its two levels. The well thought-out floor plan provides a wide range of amenities certain to please the medium-size family which desires style and convenience at every turn. The wide, handsome exterior may be finished in a variety of siding alternatives, and with either a shake roof or more conventional shingles.

The wide elevated main entry leads into a compact reception foyer and outdoor storage area, from which traffic moves naturally to the left and down two risers into the sunken living room. The living room features a sloping beamed ceiling, full-width windows and a raised-hearth masonry fireplace for convivial "at-home" gatherings. The elevated formal dining room separates from the living room by means of an optional spindle screen wall, and from the kitchen-dinette via space-saving pocket door.

The well-planned enclosed U-shape kitchen provides generous counter-top work surfaces, abundant cupboard storage facilities and an excellent work triangle configuration. The work counter presently dividing the kitchen from the dinette could easily be modified into a snack-bar counter, for those who prefer.

A very large family room area provides more than 350 square feet of finished floor area for family recreational space. A spacious service complex adjacent to the family room contains a laundry-utility core, a three-piece vanity bathroom with shower, and makes provision for an enclosed sauna for the health-conscious homeowner.

A double enclosed garage, with space for the installation of a workbench for the home handyman, completes the lower level convenience.



Features of this fine home design:

All three bedrooms are positioned on the second level, over the garage and family room areas and well away from the main entertaining area for freedom from disturbance when entertaining guests late at night. The large master bedroom has a full walk-in closet, a three-piece ensuite bathroom with shower, and a sliding glass walk-through which provides easy access to the front-facing balcony.

The master bathroom has twin vanity sinks to increase bathroom flexibility and ease morning traffic pressure.

An especially logical and convenient lay-out which offers spaciousness and a sense of luxury in an eye-appealing package.

Plans for design No. 1787 may be purchased either by the single set at a cost of \$125.00 for the first set and \$28.00 for each additional set, or by the package. A three-set plan package, including the first set, is economically priced at \$193.00 and an eight-set package, also including the first set, is only \$235.00.

Whichever method you choose, please include \$9.00 for postage and handling. Ontario residents please add 7% sales tax.

Send for the current edition of Select Homes Magazine, series 56, featuring imaginative decorating and home improvement ideas, plus 130 quality home and cottage plans of every type. Available for \$3.25 (\$2.00 plus \$1.25 postage and handling).

To order any of these items please send cheque or money order payable to the Home of the Week. Address to: Home of the Week, c/o The Halton Hills Herald, Unit 1, 131 Castlingrove Drive, Rexdale, Ontario, M9W 5E7.

**Glenn McClure Carpentry**  
ALL TYPES OF CARPENTRY WORK FOR YOU  
- Home  
- Farm  
- Cottage  
- Office

Serving Halton Hills & Area  
878-4434

**SOLARI DECORATING**  
Specializing in RESIDENTIAL INTERIOR  
Free Estimates  
Workmanship Guaranteed  
Call Jim  
453-0398

**BARLOW PLUMBING & HEATING**  
Specializing in Residential Installations & Renovations  
ACTON 853-2723

**LOU RICCI MASONRY**  
• FIREPLACES  
• FOUNDATIONS  
• BRICK, BLOCK, STONE  
877-4032

**GLENN MCCLURE CARPENTRY Licenced**  
Residential, Commercial & Industrial  
All types of carpentry work

- ★ Drywall
- ★ Repairs
- ★ Taping
- ★ New Construction
- ★ Renovation
- ★ Agricultural Building

NO JOB TOO BIG OR SMALL  
FREE ESTIMATES - QUALITY WORKMANSHIP  
878-4434

**BULLWISE WINDOWS AND DOORS**  
FACTORY OUTLET  
WINDOWS - Wood or Alum.  
New or Replacement  
DOORS - Patio and Entrance  
ALUM. STORM WINDOWS,  
& DOORS • We also install  
71 MOUNTAINVIEW RD. N.  
GEORGETOWN 877-1186  
THE PLACE TO SAVE!

**AQUAPONE WATER REFINING**  
FOR SOFT WATER  
THE WAY IT SHOULD BE  
30 day free trial  
Please call for Details  
877-6242  
348 Guelph 877-1821

**CHATELAINE LIGHTING**  
OFFICE GUELPH, ACTON & SURROUNDING AREAS SINCE 1969

SEE IT ON DISPLAY NOT IN A CATALOGUE

WE ARE SHOWING OVER 1000 FIXTURES • FULL RANGE OF TRACK LIGHTING SYSTEMS

COMPLETE LINE OF INSIDE HOMEING PRODUCTS

518 248 YORK RD GUELPH 824-0401

**HOME RENOVATIONS AND NEW CONSTRUCTION**  
We also do Roofing

For more information  
Call Andy-846-4087  
All Work Guaranteed 7 Guelph St. Norval