

# Hitchhiker killed near Norval

Early Sunday morning a 25-year old Mississauga man was struck and killed by a Georgetown driver who didn't see him hitchhiking in the middle of the westbound lane of Highway 7.

Snelgrove OPP said the accident took place just west of Caledon at Fifth Line, at 3 a.m. Michael Hargrave was standing backwards in the middle of the road, police said.

Taken to Peel Memorial Hospital, the victim was transferred to Toronto's Sunnybrook General Hospital where he passed away at 11:50 a.m. No charges have been laid.

# College graduates in demand: Stephenson

A survey of college graduates shows that 13,605 of the 18,184 students who sought employment after graduating from full-time post-secondary programs at colleges of applied arts and technology during the 1981-82 academic year found employment by mid-November, 1982.

A total of 23,764 students graduated from full-time post-secondary programs during the 1981-82 academic year and 18,184 sought employment. The remainder either did not seek work, continued their education, or did not report their activities.

The information is contained in the annual College of Applied Arts and Technology Graduate Placement Report, released last week by colleges and universities minister Dr. Bette Stephenson.

Dr. Stephenson said that statistics show that, despite the current economic conditions, college graduates are still in demand. "I think that this indicates that the colleges are meeting the swiftly changing technological needs of industry today," she said.

The report is designed as a resource for students in selecting college programs and for use by counsellors in advising students on program selection, career planning, and possible future employment trends.

"Despite current economic conditions, the job finding success of college graduates has remained relatively high," said Colette Brouillard, who chairs the provincial College Placement Group and is Career Planning and Placement Director of Cambrian College.

"These statistics reflect the flexibility and perseverance of our graduates in facing a difficult job market," she said.

The report presents statistics obtained from follow-up surveys with students conducted by career counselling and placement officials at each of the 23 colleges.

Statistics shown in the report show median starting salaries for graduates of one-year programs are \$13,000 to \$13,000.

# Getting to know your bridge

Usually a partnership at the bridge table struggles to ensure a partial, and, even a game on occasion. Sometimes, however, a partnership is dealt no less than three game winning bids. The problem, as always, is finding aforementioned game bid. At duplicate, the best game bid is imperative.

- (a) Can you see the 3 potential games?
- (b) Can you find the optimum contract?
- (c) Given the lead, what card would you lead to hold NS to their worst result?

This was the hand:

**THE HAND:**

Bd. No. 1	
Dir. N	
Vol. 0	
S-KJ82	S-943
H-Q75	H-1062
D-AJ32	D-97
C-97	C-KQJ108
S-1075	S-AQ6
H-AKJ98	H-43
D-Q4	D-K1085
C-643	C-A52

**THE ANALYSIS:**

North-South can make three different games, but it is unlikely that any one of them will be reached. A typical auction might be 1 D, 1 H, 1 S, 2 H (or 2 C), 2 S, Pass, 3 D. North's 3 D bid in this sequence shows a moderate hand of 10-12 pts.

(with a poor hand N would pass 2 S) with 4 card diamond support and only 4 S. Aggressive Souths who bid over 3 D will stumble into 3 NT, 4 S or 5 D, all of which make thanks to the favorable lie of the cards. Continuous club leads will hold no trump and spade declarers to 10 tricks but in diamonds there is no way to stop 11 tricks. If West takes his two top hearts, declarer can eventually get rid of both his small clubs on the Heart Q and long spade, while if West takes only one heart, declarer can dump his second heart on the fourth spade and later lose a club.

The North-South winners at the Georgetown Duplicate Bridge Club last Tuesday were Peter Gifford and Brian Ayer.

Second spot went to Blayne Hillock and Phyllis Campbell, while Arthur Kwel and Bill Dinan held third.

The East-West winners were Lorena Norris and Judy Rivers followed closely by Rene March and Steve Fleming. Third went to John Flanagan and Peter Kakro.

The Georgetown Duplicate Bridge Club extends a warm hearty welcome to all interested parties who might enjoy a competitive bridge game. The club meets every Tuesday evening at the Georgetown Legion Hall on Mill Street. Game time is 7:45 p.m. Come and play bridge!

**IMPORT AUTO SERVICE**

ANDY'S

332 Hwy. 7 Georgetown  
877-1944

— We Now Sell Kerosene —

- Volvo
- Toyota
- Honda


- Mercedes
- Datsun
- Domestic

# HOME OF THE WEEK

# FOUR-BEDROOM LEISURE CHALET

**CUSTOM INSTALLED**

**CENTRAL VACUUM SYSTEMS**



G.K. THOMPSON & CO.  
877-7454

**SOLARI DECORATING**

Specializing in RESIDENTIAL INTERIOR

Free Estimates Workmanship Guaranteed

Call Jim  
453-0398

**E.S.L. CARPENTRY**

Specializing in HOME RENOVATIONS

Experts in Kitchen & Rec Rooms

Reasonable Prices

878-5104

**DELREX Aluminum Limited**

Aluminum Awnings, Siding, Caropies, Storm Doors, Windows, Soffits, Fascia in Living Colours

877-5383

**HALTON DOOR SYSTEMS**

Sales & Service to all types of overhead garage doors and electric operators, radio controls and accessories.

877-1764

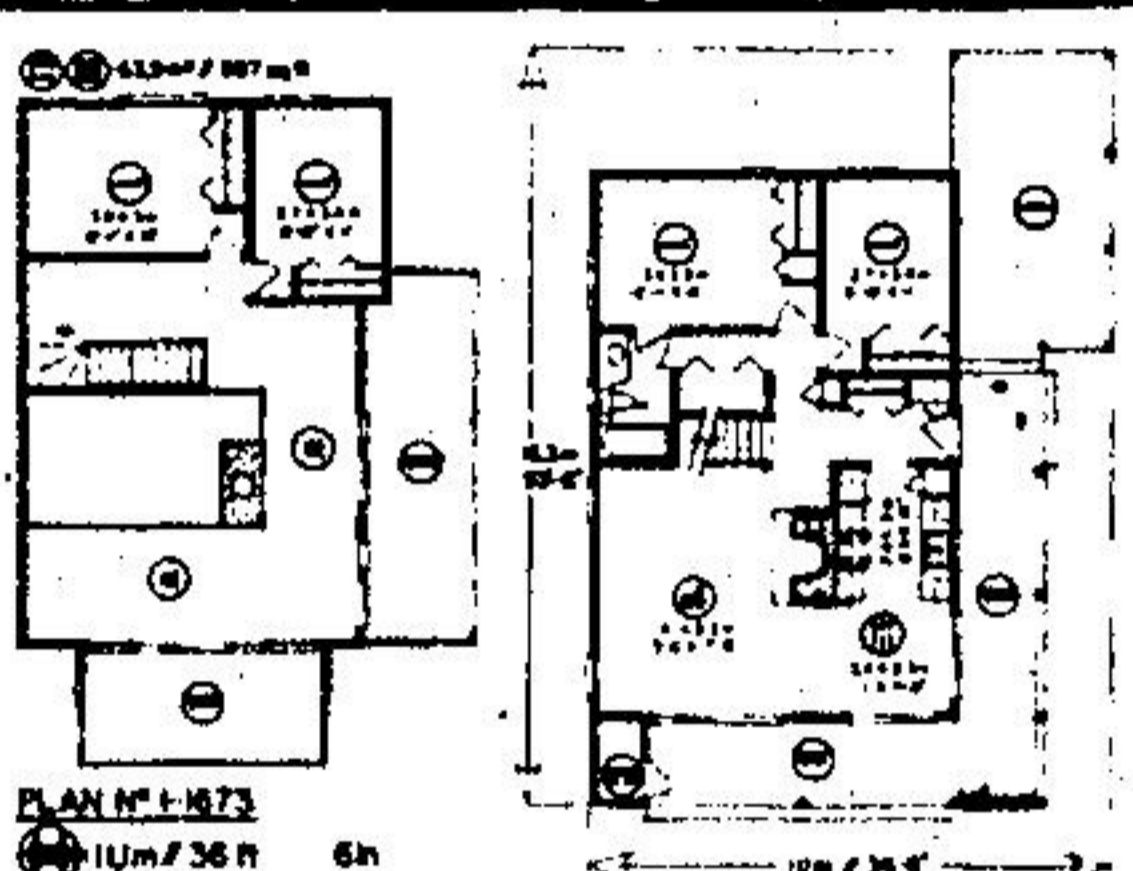


Here's a charmingly rustic conventional home design in the European-style chalet fashion which is ideally suited to the very narrow (though recreational) building site, yet it provides nearly 1,700 square feet of well-appointed finished floor area on its first level. The chalet's rugged exterior is finished in natural horizontal and vertical channel siding, with natural stone on the lower walls, and a heavy white roof. For those whose tastes run to the traditional, the roof could be alternately finished in more conventional shingles.

The main entry from the sheltered airport leads into a bright reception foyer and entrance through glass doors which opens naturally to the left and into the spacious L-shaped living-dining room combination. The living room features a large, natural-hewn masonry fireplace and a wide sliding glass door through which leads into the wrap-around veranda. The dining area has double sliding glass doors, plus sliding entry doors to outdoor dining in the rear, and a central cross-ventilation in heated wood floor.

The compact gallery-style kitchen provides generous counter-top work surface, ample cabinet storage facilities and a top-saving work height configuration.

Two lower level bedrooms have the view-alike central bathroom and the two large rear storage cupboards. Each has generous closet storage and good exposure for view, ventilation and natural light. Two additional bedrooms are positioned on the second level, accessible via stairway from the main hallway adjacent to the living room. Each are finished and



Have excellent natural light and generous views.

The second level has also a spacious and well-lighted enclosed gallery, with double sliding glass doors through which leads into the front and side balconies. This area would make an excellent outdoor lounge and recreational facility for evening children during inclement weather, or could be developed into additional accommodations, according to individual family preferences.

This is an outstanding practical leisure home design which offers abundant space, great views and an intelligent layout of available living space.

Plans for design No. 7-1573 may be purchased either by the single set, at a cost of \$125.00 for the first set and \$10.00 for each additional set, or by the package. A low set price package, including the first set, is commercially priced at \$155.00 and an eight-set package, also including the first set, is only \$225.00.

Whatever method you choose, please include \$3.00 for postage and handling. Ontario residents please add 7% sales tax.

Send for the current edition of Select Homes magazine, volume 16, featuring imaginative decorating and home improvement ideas, plus 120 quality homes and cottage plans at every 79¢. Available for \$3.25 (\$2.00 plus \$1.25 postage and handling).

To order any of these home plans send cheque or money order, payable to the name of the book, c/o The House 1980, Unit 1, 151 Cartwright Drive, Toronto, Ontario, M9W 6E7.

**LOU RICCI MASONRY**

- FIREPLACES
- FOUNDATIONS
- BRICK, BLOCK, STONE

877-4032

**DON LEADLAY**

Renovating & Decorating

Specializing in Drywall Taping & Repairs

- texture Spraying
- also Cedar Decks
- Rec Rooms
- Painting & Papering

877-1210

**BARLOW PLUMBING & HEATING**

Specializing in Residential Installations & Renovations

ACTON 853-2723

**Glenn McClure Carpentry**

- Home
- Farm
- Cottage
- Office

Licensed

Serving Halton Hills & Area

878-4434

## Solari Decorating

Specializing in • Residential • Interior

Free Estimates • Workmanship Guaranteed

Call Jim at 453-0398

**BUJWISSE**

FACTORY OUTLET WINDOWS - Wood or Alum.

Blow or Replacement DOORS - Patio and Entrance ALUM. STORM WINDOWS, & DOORS • We also install 71 MOUNTAINVIEW RD. N. GEORGETOWN • 877-1186 THE PLACE TO SAVE!

**AQUAPONIX WATER FINISHER**

FOR SOFT WATER THE WAY IT SHOULD BE

30 day free trial

Please call for Details

877-6242

348 Guelph 877-1821

**CHATELAINE LIGHTING**

REPAIRS BULBS, ACTS AS SUBSTITUTION AREA SINCE 1969

RESIDENTIAL - COMMERCIAL

SEE IT ON DISPLAY DON'T BUY A CATALOGUE

WE ARE SHOWING OVER 1000 PICTURES FOR A RANGE OF TRACK LIGHTING SYSTEMS

COMPLETE LINE OF BULB AND LIGHTING PRODUCTS

519 824-0401

240 YORK RD. GUELPH

**W.C.H. PAINTER AND DECORATOR**

Installation of Ceramic Tile Work

NO JOB TOO SMALL

Rebuild Bathrooms & Kitchens

FREE ESTIMATES

877-5530

**B. PICARD**

- Aluminum Siding
- Home Improvements
- Soffit-Fascia-Roofing
- 5" Seamless Eavesdroppers
- Windows & Doors

FREE ESTIMATES

877-8247