

# Know your skiing courtesies

There are common courtesies and basic guidelines for riding the various surface and serial ski lifts with which, for your safety and the safety of others, you should be familiar.

— Obey all posted instructions.

— Do not use a lift until you are familiar with its operation. Watch and learn or ask for assistance.

— Slow down before approaching the entrance to a lift.

— Load and unload only at designated areas.

— Be polite and courteous at the loading area.

— Do not bounce or otherwise abuse lift equipment.

— Make sure no loose clothing is caught in lift before unloading.

— Move quickly away from unloading areas.

— If a lift stops, do not attempt to get off. Remember, if there is a mechanical problem, area personnel will provide assistance.

— When riding a lift with small children, help them load and unload. Do not allow them to ride a lift alone until they can do so properly. You are responsible for your children and their actions.

## MORE YOU KNOW. THE GREATER THE ENJOYMENT

1. It is always wise to warm up for any strenuous activity; skiing is no exception. You will get off to a better start if you take a few warm-up runs on easier terrain first. Pre-season conditioning, either from other athletic pursuits or lots of walking, will make early-season skiing more enjoyable.

2. In high mountain country where avalanche conditions may exist, heed all avalanche warnings.

3. Avoid skiing through ski school classes. The same goes for race courses, unless you are a participant.

4. Do not attempt to stop a run-away ski. Instead, shout the warning: "Run-away ski" to people below.

5. You will be more comfortable if you dress in layers of non-restrictive clothing which can be removed or added on as temperatures change.

6. On sub-zero or windy days, shield your face with a high collar, neck gaiter or face mask. Greasy skin creams also protect the face from cold. A good pair of mittens with liners is usually warmer than gloves.

7. Skiing in bright sunshine is exhilarating, but sun reflecting on snow, like sun on water, can cause severe sunburn and snowblindness. Use a good sunblock lotion and wear dark glasses or goggles.

8. Before your youngster goes off for a day on the slopes, be sure to insert a note with a contact name, phone number and local address inside the child's parka.

### ENJOY YOUR EQUIPMENT EVEN MORE

Keeping your skis and bindings in good condition plays an important role in enhancing your skiing enjoyment. The bottoms of the skis should be maintained periodically to keep them smooth. A quick application of wax will add polish to your turns. Frequent sharpening of your edges (or even daily under certain conditions) greatly aids your

control. Your bindings should be kept lubricated and the release setting checked frequently by a qualified ski mechanic during the ski season. While there is no absolute guarantee that a binding will release under all circumstances, conscientious maintenance increases the binding's reliability. It is always good to protect your bindings from the elements by keeping them covered when on a car rack.

Most full-service ski shops have qualified ski mechanics to perform ski-binding maintenance. If you ski often, you may want to learn how to service your own equipment, but this does not require a level of expertise which can best be obtained by reading special instructional guides on the subject.

Having confidence in your equipment brings greater confidence in your skiing.



The Major Midget Reps from Georgetown (seen above) were runner-ups in the local Midget tourney last week, drawing crowds as large as 600 at the Gordon Alcott arena.

**Glenn McClure Carpentry**

ALL TYPES OF CARPENTRY WORK FOR YOUR

- Home
- Farm
- Cottage
- Office

LICENSED

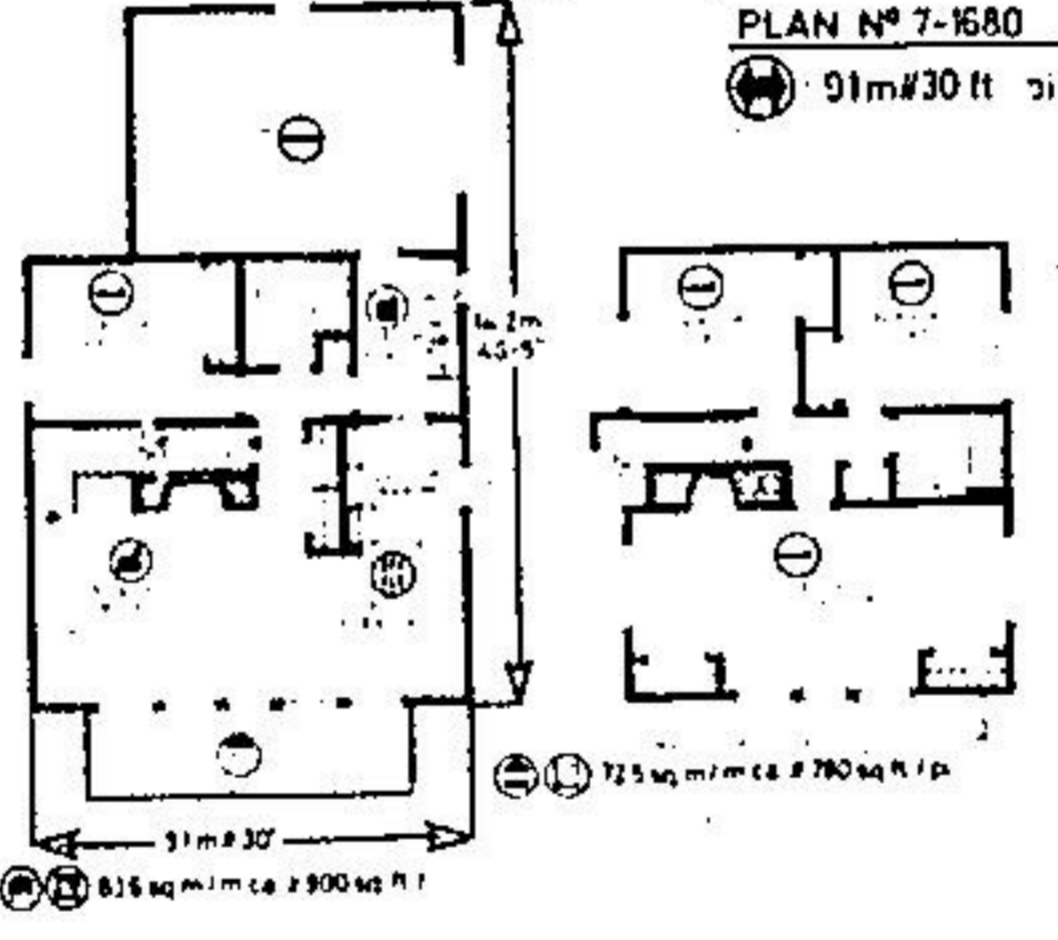
FREE ESTIMATES  
878-4434

**DELREX Aluminum Limited**

Aluminum Awning Eavesstroughs Siding Canopies Storm Doors Windows Soffit Fascia in Living Colours

877-5383

# HOME OF THE WEEK



## BAVARIAN-STYLE CHALET FOR A CANADIAN SETTING

This magnificent two-storey, four-bedroom, Bavarian-style chalet is an ideal leisure home for the larger family which requires spaciousness and country comfort, as it provides nearly 1,700 square feet of well-arranged living space. The stylish exterior features an eye-appealing facade composed of vertical channel siding, asphalt shingled roof, ornate decorative fascia, and a front-facing balcony which overhangs the entranceway.

The main entry opens directly into the heart of family activities, where the diamond-paned windows afford excellent natural lighting and a panoramic view. A second entrance, accessible from the single-car garage, sensibly opens into the utilitarian service area adjacent to the compact galley-style kitchen.

The centrally-positioned cantilevered-hearth brick fireplace in the living room reduces heat loss, offering important fuel economy.

On the main level, the full-sized family bathroom is conveniently adjacent to the large bedroom, which has generous closet storage facilities, and which could be reserved for guests.

The exceptionally large master bedroom has a second brick fireplace and affords a quiet retreat for relaxation, while viewing the scenery on three sides. Separate his and hers closets complete the convenience features of this spacious master bedroom.

Both of the secondary bedrooms on the second level are of generous proportions, with wide windows for view, ventilation and natural light, and generous closet storage facilities. The second

bedroom is positioned next to the large linen storage facility in the hallway. All three upper level bedrooms have attractive sloped and beamed ceilings.

A full basement under the living and dining areas may be used immediately for storage, and later for the development of additional accommodations and/or recreation facilities. The remaining area beneath the rear of the cottage may be utilized for dead storage.

Plans for design No. 7-1680 may be purchased either by the single set, at a cost of \$135.00 for the first set and \$26.00 for each additional set, or by the package. A five-set plan package, including the first set, is economically priced at \$195.00 and an eight-set package, also including the first set, is only \$235.00.

Whichever method you choose, please include \$9.00 for postage and handling. Ontario residents please add 7% sales tax.

Send for the current edition of Select Homes magazine, series 55, featuring imaginative decorating and home improvement ideas, plus 130 quality home and cottage plans of every type. Available for \$3.25 (\$2.00 plus \$1.25 postage and handling).

To order any of these items please send cheque or money order, payable to the Home of the Week. Address to: Home of the Week, c/o The Halton Hills Herald, Unit 1, 151 Carlingview Drive, Rexdale, Ontario, MBW 5E7.

**ANTIQUE REFINISHING**

- Furniture
- Piano's

From Old to Young again!

All refinishing Guaranteed Beautifully

Call Ed at 853-1818 ANYTIME

**Muirhead Insulation GEORGETOWN**

- Attics
- Walls
- Thermo Replacement Windows

YOUR LOCAL CONTRACTOR

877-7447

**W.C.H. PAINTER AND DECORATOR**

Inside & Out

NO JOB TOO SMALL

Discount for Seniors

FREE ESTIMATES

877-5530

**CHATELAINE LIGHTING**

LEADING QUALITY ACTION & SURROUNDING AREAS SINCE 1969

RESIDENTIAL - COMMERCIAL

SEE IT ON DISPLAY NOT IN A CATALOGUE

WE ARE SHOWING OVER 1000 FIXTURES

FULL RANGE OF TRACK LIGHTING SYSTEMS

COMPLETE LINE OF OUTDOOR HOUSING PRODUCTS

519 740 YORK RD. GUELPH

824-0401

**CUSTOM INSTALLED CENTRAL VACUUM SYSTEMS**

**G.K. THOMPSON & CO.**

877-7454

**SOLARI DECORATING**

Specializing in RESIDENTIAL INTERIOR

Free Estimates

Workmanship Guaranteed

Call Jim

453-0398

**HALTON DOOR SYSTEMS Ltd.**

Sales & Service to all types of overhead garage doors and electric operators, radio controls and accessories

All Work Fully Guaranteed

877-1764

**BUD WISE WINDOWS AND DOORS**

FACTORY OUTLET

Complete Line of Energy Saving WINDOWS AND DOORS

WE INSTALL

"The Place To Save!"

71 MOUNTAINVIEW RD. N. UNIT 5, GEORGETOWN

877-1186

**E & R SHOPPING SERVICES**

- TOO BUSY?
- HOUSEBOUND?
- BAD WEATHER?

Let us do your shopping and errands for you - Pay on Delivery -

For More Information Call 877-8542

**JOHN CAMPBELL LANDSCAPING**

24 HOUR SNOW REMOVAL

- Sanding & Sealing
- Residential & Commercial

451-8025

**AQUAFINE WATER FILTERS**

WATER SOFTENERS AND WATER TREATMENT EQUIPMENT

LOW MONTHLY RENTALS

FREE WATER TESTING & SERVICE

348 Guelph St. 877-6242

**E.S.L. CARPENTRY**

Specializing in HOME RENOVATIONS

Experts in Kitchen & Rec Rooms

Reasonable Prices

878-5104