

Count 'em up - bridge is a game of science

Bridge is a game of science. The players learn that in order to be successful in a major game of four hearts or spades, 26 points between the two hands in the partnership is necessary. In addition to this, it follows that in order to make five of anything, 29 points are required; to make six 32 points and for seven, 37 points are required.

Science you say. Today's hand breaks all the rules. With a maximum point count of 22, East-West can make a slam.

The reason is simple. The high card values that were being counted in the science view are replaced by ruffing power. Note the West hand has no hearts, and only one diamond. Consequently, West can do a lot of ruffing and ends up losing the spade King. This was the hand.

THE HAND:
Bd. No. 4
Dir. W
Vul. Both

S-K652
H-AKQ7
D-1082
C-92

S-AQJ10973 S-8
H- H-J10984
D-5 D-AJ9
C-AQ1085 C-K874

S-4
H-6532
D-KQ9743
C-J3

THE ANALYSIS:
Small slam can be made in spades and grand slam in clubs but it's difficult for west to pinpoint the key cards in

Give a UNICEF gift to a friend and help a child.



For a free brochure, call toll free anytime: 1-800-268-6362. Ask for operator 508.
In B.C., call toll free anytime: 112-800-268-6362. Ask for operator 508.



Barry D. Timleck
Chartered Accountant

CARRETAL BUILDING
SUITE 301
16 Mountainview Rd. S.
GEORGETOWN

877-6948

East's hand. If West opens with a game-forcing two-bid (best), E-W will get to small slam in due course; the pair have a chance to reach 7-clubs if West opens 1 spade and the auction proceeds; W-1S, E-2H, W-3C, E-3D, W-4C, E-4C, W-7C. West's 3-C shows a hand of great strength so East's 3-D is a waiting bid, asking West to clarify his hand, and tends to show a diamond control. When West rebids his

clubs, East can infer partner is 6-5 in the black suits 9 (with only 5-5 he should have opened 1-C) and take a shot at slam. From West's point of view, East is marked with a singleton spade and the K-C for his vigorous bidding and should have the A-D for his 3-diamond bid. Note that once East has made a two-over-one response and West a change of suit at a higher level, a game force exists; both East and West can there-

fore bid slowly to show all their values. The North-South winners at the Georgetown Bridge Club last Tuesday evening were Arthur Kwei and Bill Dinan with the second spot going to Duke Wilson and Enid Ashworth. Third place was held by Gus Fleisch and Fred Allen. The East-West winners were Muriel Allen and Denis Rosendale who were tied by Shirley Simpson and Art Norris. Second in

this direction were Walter Biehn and Gordon Mellow. The north-south winners at the Georgetown Bridge Club were Duke Wilson and John Flanagan, with second going to Harry Arbie and George Sargent. Third spot belonged to Bernice Cote and Denis Rosendale. The East-West winners were Helen Hyde and Blayne Hillock followed by Betty and Adriaan Van Osa. Hans and Betty Buscher were third.

The Georgetown Bridge Club held its annual Christmas party last week for its members and their guests. A delicious food table was provided by Blayne Hillock for the club. I wish to take this opportunity to thank Blayne for his efforts. Thanks, Blayne. The Georgetown Bridge Club will be starting their 18th year of weekly operation this coming new year. Many bridge players enjoy an evening of fun and

fellowship at the bridge table in this club. Although the competition is keen, manners are not forgotten. The Georgetown Bridge Club invites all area bridge players to join the club for the purpose of improving personal bridge skills and acquiring new friends. The club meets every Tuesday night at the Georgetown Legion Hall on Mill Street. Game time is 7:45 p.m. Come and play Bridge!

CONSOLIDATED ENERGY SERVICE
474 Page Ave., Mississauga
Tel. (416) 278-2468

- BLOWN FIBERGLASS
- BLOWN ROCKWOOL
- VENTILATION

WITH THIS AD
\$30 OFF
NECK CRAWLING, GEORGETOWN
877-4148

TEXTURED CEILINGS and PLASTER REPAIRS FALL SPECIAL

Textured Ceiling
\$149.95
Any ceiling of average size
Call John
853-2726

DELREX Aluminum Limited
Aluminum Awnings Specializing in
Eavesdroights replacement
Siding windows & patio doors
Canopies
Storm Doors
Windows
Screens
Fascia in Living
Colours

877-5383

Glenn McClure Carpentry

ALL TYPES OF CARPENTRY WORK FOR YOUR

- Home
- Farm
- Cottage
- Office

LICENSED
FREE ESTIMATES
878-4434

CHIMNEY'S BUILT & REPAIRED

We do Structural Repairs from your chimney down to your basement
A Generations of Experience
Ed McMullen
853-1818

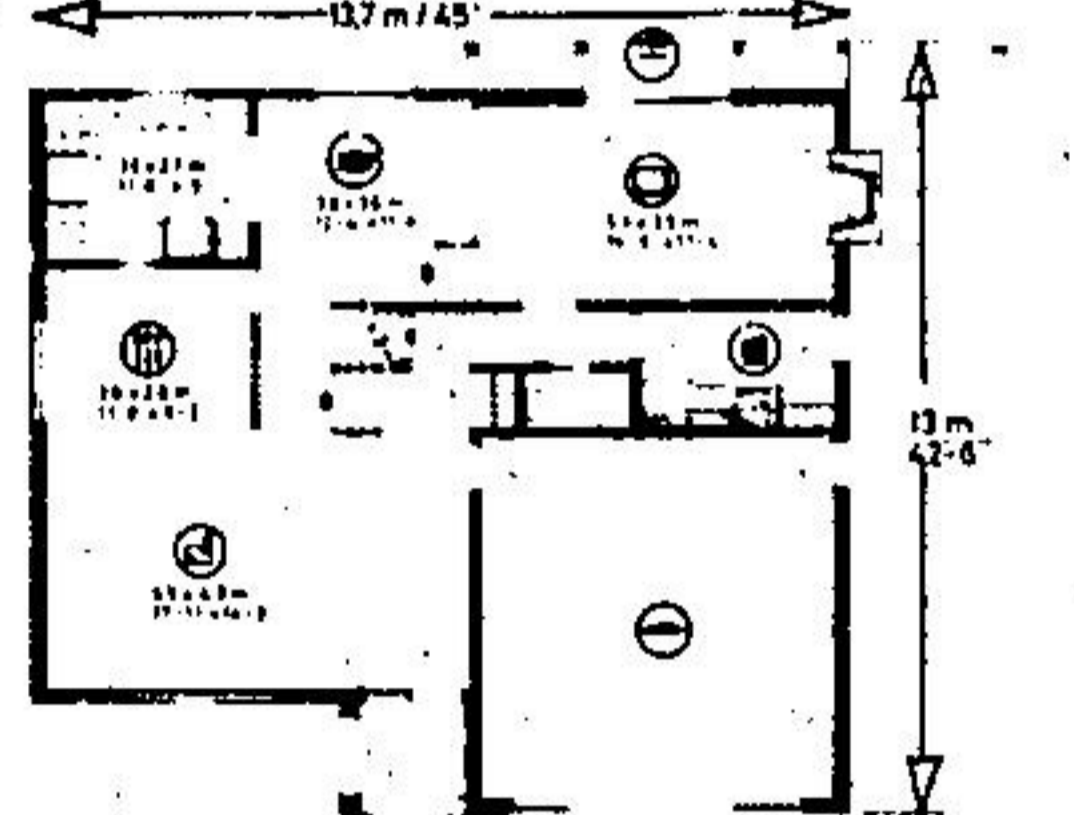
Muirhead Insulation GEORGETOWN

- Attics
- Walls
- Thermo Replacement Windows

YOUR LOCAL CONTRACTOR
877-7447

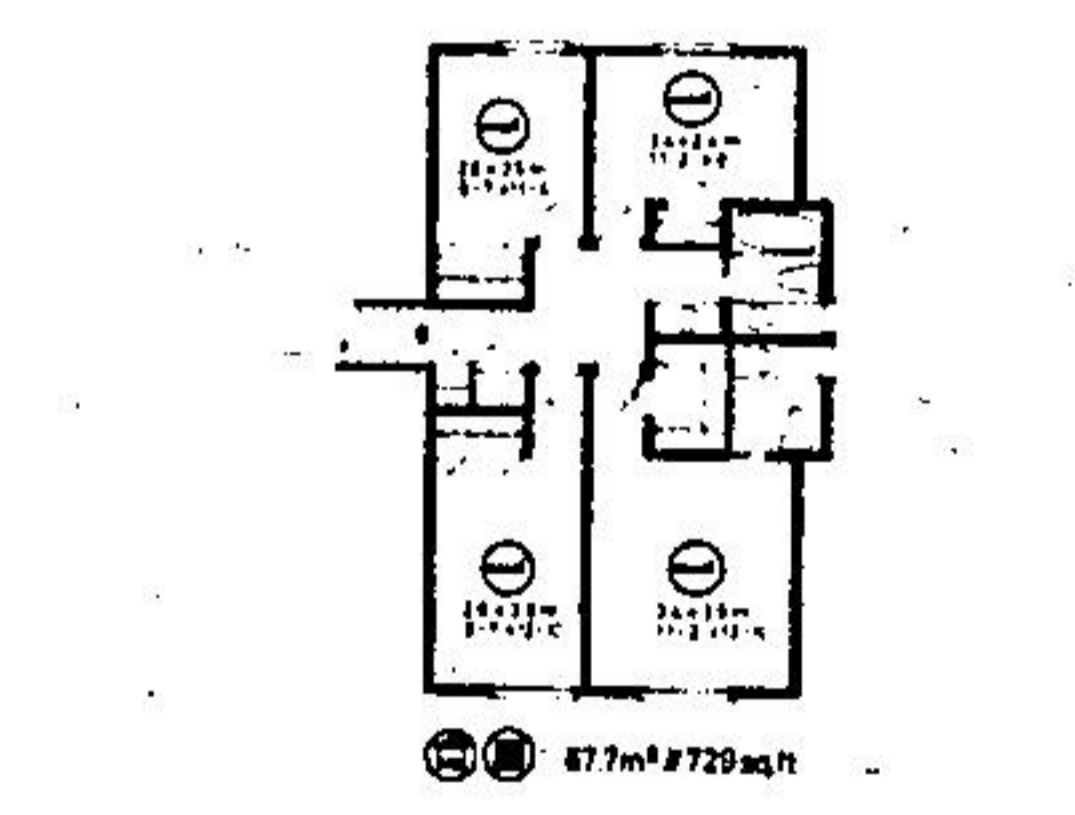
BUKWISE
WINDOWS AND DOORS

FACTORY OUTLET
Complete Line of Energy Saving WINDOWS AND DOORS
- WE INSTALL -
"The Place To Save!"
71 MOUNTAINVIEW RD. N. UNIT 5, GEORGETOWN
877-1186



HOME OF THE WEEK

- 78.8m² # 877sqft
- 22.5m² # 242sqft
- 12.1m² # 141sqft



IMPRESSIVE TRADITIONAL TWO-STORY WITH FOUR BEDROOMS

This stately one-and-one-half storey home design is perfectly suited to the medium frontage residential building lot and provides nearly 2,000 square feet of well-planned finished floor area for the medium-sized family. The imposing Tudoresque exterior is finished in stucco and barge board trim, with brick veneer accents and a shake roof. For those who prefer, the roof could be alternately finished in more conventional shingles.

The deeply weather-protected main entry leads traffic down the short hallway and up the partial stairway to the elevated rectangular living-dining room combination. The living room features an accent wall dividing the dining area and stairway, and an optional spindle screen wall facing the reception foyer. The dining area has a pass-through counter from the kitchen for convenient meal serving.

The spacious U-shape kitchen has a step-saving work triangle, generous countertop work surfaces and abundant cupboard storage. The kitchen is open to the spacious dinette area, which latter divides from the large family room by means of an optional screen wall and partial stairway. The family room features a raised-hearth masonry fireplace and sliding glass doors leading onto the wide rear-facing patio.

A two-piece vanity bathroom and a spacious laundry-utility room are accessible from the family room. The laundry-utility area features an side-by-side configuration of washer-tub-dryer. Opposite the vanity bathroom lies the stairway to the unfinished partial basement positioned beneath the living-dining area. Additional recreational and lounge facilities may be developed here at some later date.

All four bedrooms are positioned on the topmost level, accessible via short stairway from the hallway opposite the dining room. Each has ample closet storage and excellent exposure for view, ventilation and natural light. The front-facing master bedroom has a full walk-in closet and a two-piece vanity bathroom behind a space-saving pocket door.

The master bathroom divides the tub, commode and one vanity sink from a second vanity sink, for greater flexibility during peak traffic periods.

A double enclosed garage with internal access to the main hallway completes the convenience features of this stylish and practical home design.

Plans for design No. 78-1939 may be purchased either by the single set, at a cost of \$135.00 for the first set and \$26.00 for each additional set, or by the package. A five-set plan package, including the first set, is economically priced at \$195.00 and an eight-set package, also including the first set, is only \$235.00.

Whichever method you choose, please include \$9.00 for postage and handling. Ontario residents please add 7% sales tax.

Send for the current edition of Select Homes magazine, series 65, featuring imaginative decorating and home improvement ideas, plus 130 quality home and cottage plans of every type. Available for \$3.25 (\$2.00 plus \$1.25 postage and handling).

To order any of these items please send cheque or money order, payable to the Home of the Week. Address for Home of the Week, c/o The Halton Hills Herald, Unit 1, 151 Carlingview Drive, Rexdale, Ontario, M9W 5E7.

W.C.H. PAINTER AND DECORATOR
Inside & Out
NO JOB TOO SMALL
Discount for Seniors
FREE ESTIMATES
877-5530

CHATELAINE LIGHTING
SERVING QUELPH, ACTON & SURROUNDING AREAS SINCE 1969
RESIDENTIAL - COMMERCIAL
SEE IT ON DISPLAY NOT IN A CATALOGUE
WE ARE SHOWING OVER 1000 FIXTURES
- FULL RANGE OF TRACK LIGHTING SYSTEMS
- COMPLETE LINE OF KITCHEN HOUSING PRODUCTS
519
824-0401

CUSTOM INSTALLED CENTRAL VACUUM SYSTEMS

G.K. THOMPSON & CO.
877-7454

SOLARI DECORATING
Specializing in
RESIDENTIAL INTERIOR
Free Estimates
Workmanship Guaranteed
Call Jim
453-0398

HALTON DOOR SYSTEMS

Sales & Service to all types of overhead garage doors and electric openers, radio controls and accessories
All Work Fully Guaranteed
877-1784

JOHN CAMPBELL LANDSCAPING
24 HOUR SNOW REMOVAL
• Sanding & Salting
• Residential & Commercial
451-8025

AQUAFONE WATER SERVICES
WATER SOFTENERS AND WATER TREATMENT EQUIPMENT

LOW MONTHLY RENTALS	FREE WATER TESTING & SERVICE
---------------------	------------------------------

348 Gough St. **877-6242**

E.S.L. CARPENTRY
Specializing in HOME RENOVATIONS
Experts in Kitchen & Rec Rooms
Reasonable Prices
878-5104