

Getting to know duplicate bridge club

As a bridge player, I hate the so-called experts giving me a hand and claiming that 3 No Trump or some such game may be made by this hand.

In this instance, the hand in question is the East hand and the contract is 3 No trump. Can you make this contract against any defence? This was the hand.

THE HAND:

Bd. No. 5
Dir. N
Vul. N-S

S-J52
H-87
D-J8
C-Q109852

S-Q103
H-1062
D-KQ32
C-KJ6

S-AK97
H-AQ5
D-7654
C-43

S-864
H-KJ974
D-A109
C-A7

THE ANALYSIS:

Even the most avid proponents of 5-card majors should consider opening the East hand with 1-S instead of 1-D for several reasons:

- 1) East wants a spade lead if N-S buy the hand.
- 2) The auction handles much more easily should partner respond 2 clubs.
- 3) East's concentration of high cards is immediately defined.

Don't toss that snow

Herald Special

When mounds of snow begin piling up around your door, resist the impulse to grab the nearest shovel and start plowing energetically to the street. Snow shoveling is heavy work and requires the proper technique if you want to avoid straining your heart and back.

The Ontario Safety League offers the following shoveling tips:

Cover as much exposed skin as possible, especially when the wind chill factor is below -6 Celsius (20 degrees F). Use multiple layers of lightweight clothing for easy movement. Remove the top layer as you work to prevent overheating.

Use a sturdy, lightweight shovel to push snow out of the way. If you must lift it, take out small scoops, and use your legs and entire body to help lift the load, not just your arms and back.

Smoking and drinking alcoholic beverage are out while shoveling. Cigarette smoking constricts your blood vessels, making your heart and lungs work that much harder. Drinking may give you a false sense of energy and lead you to over-exert yourself.

The best time to shovel is before eating, or at least one to two hours after eating.

As the cards lie, 3 NT, which is not a good contract, can be made but few pairs will get this high except by sheer momentum. E-W are more likely to play a diamond, spade, or no trump partial. The distribution is so favorable for E-W that East, as declarer, can actually take 10 tricks in either spades or no trump with double-dummy play against any defence.

Now that you have had

the opportunity, one possible line that East could adopt would be to try and establish the diamond suit for three tricks. As long as the diamonds are split 3-2 and the Ace is in front of the K-Q the contract will come home.

South, on lead could lead anything. However, a spade from south is giving away nothing whereas anything else makes it easier for East. Assuming a spade start, East ducks

on board and plays the Ace and immediately leads a diamond.

South shouldn't play the Ace and East should play the King. When the King holds, East now suspects the Ace to be on side and crosses again to his hand with a spade to lead another diamond.

South will now only get one diamond, one club and might give up an extra heart if South leads this suit at any time. East

takes 4 spades, 3 diamonds a club and a heart for nine tricks and a game.

The winners in the north-south at the Georgetown Duplicate Bridge Club last Tuesday were Rexene and Earl Heffren. The second went to Norma Maynard and Elsie Whitham and third place was held by Bob Clarke and Mark Loeb.

The East-West winners were Peter Gostonic and Peter Gifford followed

closely by Steve Fleming and Rene March and Fred Allen and Gus Flesch who were tied for second.

The Georgetown Bridge Club extends a cordial welcome to all bridge players to spend an evening with us for a friendly competitive bridge game. The club meets every Tuesday evening at the Georgetown Legion Hall on Mill Street. Game time is 7:45 p.m. Come and play bridge!

FISH & CHIPS



• Halibut • Shrimp
• Cod • Chicken

Skipper Fish & Chips
Georgetown Market Place
877-0239

CONSOLIDATED ENERGY SERVICE

474 Forge Ave., Wash Mills
Tel. (416) 278-2468

- BLOWN FIBERGLASS
- BLOWN ROCKWOOL
- VENTILATION

**WITH THIS AD
\$30 OFF**

NICK CRAWFORD, GEORGETOWN
877-4148

**TEXTURED CEILINGS
and
PLASTER REPAIRS**

FALL SPECIAL

Textured Ceiling
\$149.95

Any ceiling of average size
Call John
853-2726

**DELREX
Aluminum Limited**

Aluminum Awning Specializing in
Extrusions replacement
Siding windows &
Canopies patio doors

Storm Doors
Windows
Seal
Fascia in Living
Colours

877-5383

**Glenn McClure
Carpentry**

ALL TYPES OF
CARPENTRY WORK
FOR YOUR

- Home
- Farm
- Cottage
- Office

LICENSED
FREE ESTIMATES
878-4434

**CHIMNEY'S
BUILT & REPAIRED**

We do Structural Repairs
from your chimney down
to your basement!

4 Generations of
Experience
Ed McMullen
853-1818

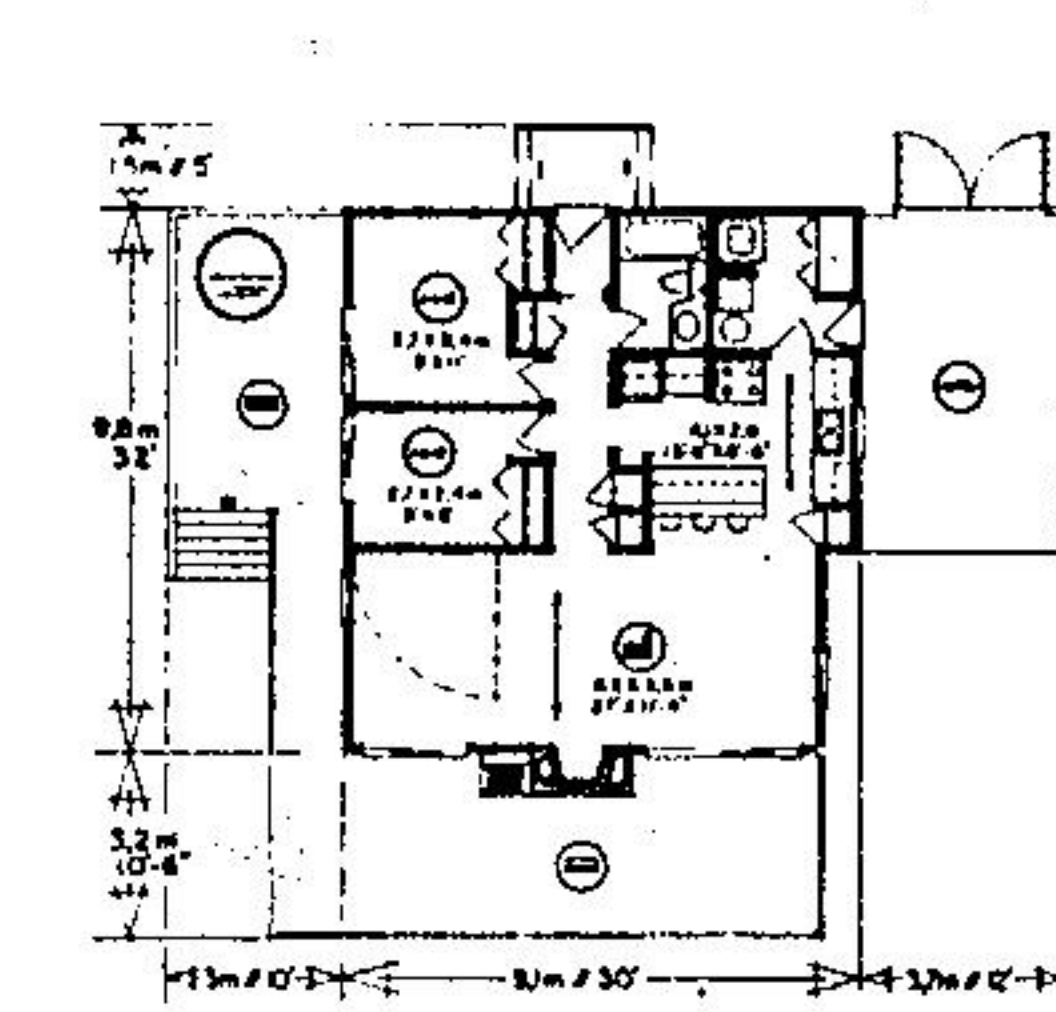
**Muirhead
Insulation
GEORGETOWN**

- Attics
- Walls
- Thermo Replacement
Windows

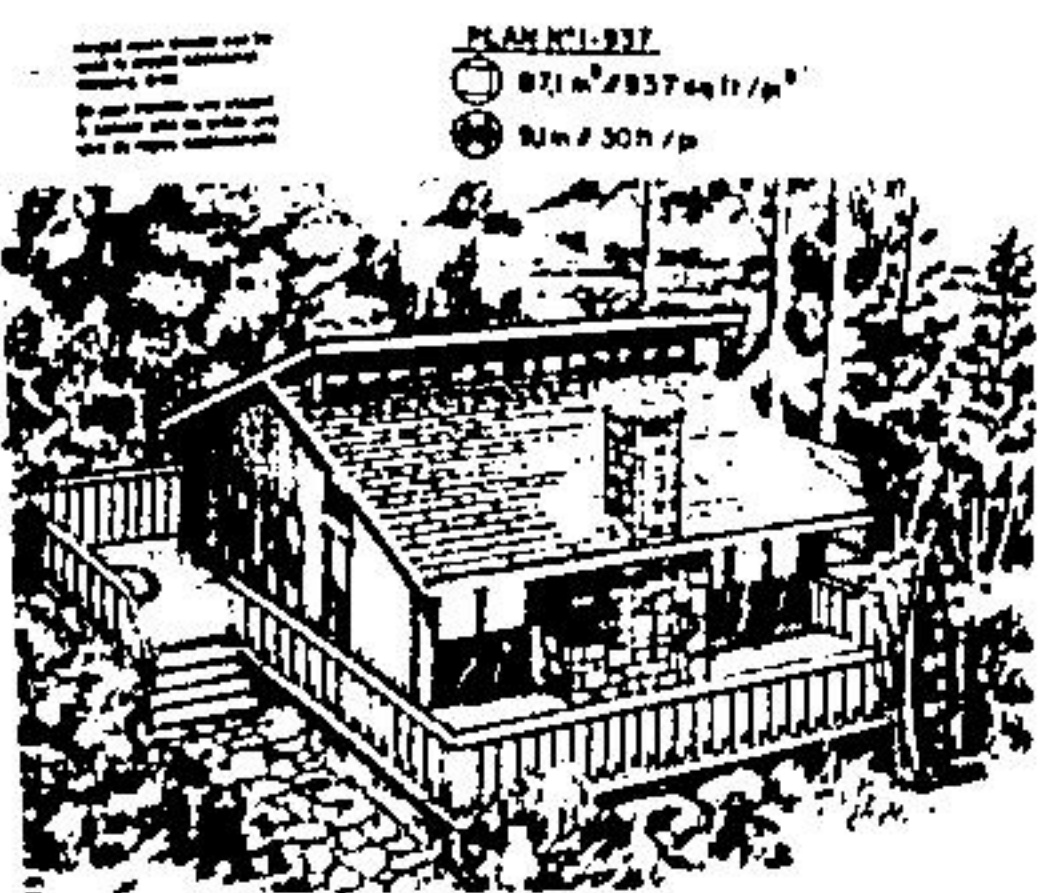
**YOUR LOCAL
CONTRACTOR**
877-7447

BUDWISER
WINDOWS and DOORS

FACTORY OUTLET
Complete Line of Energy Saving
WINDOWS AND DOORS
- WE INSTALL -
"The Place To Save!"
77 MOUNTAINVIEW RD. N.
UNIT 5, GEORGETOWN
877-1186



HOME OF THE WEEK



**E & R
SHOPPING SERVICES**

- ★ TOO BUSY?
- ★ HOUSEBOUND?
- ★ BAD WEATHER?

Let us do your shopping
and errands for you -
- Pay on Delivery -
For More Information
Call **877-8542**

**JOHN CAMPBELL
LANDSCAPING**

- Professional Design
- Retaining Walls
- Plants
- Seeding
- Backyard Walks
- Hedges and Fences
- Tree Pruning & Surgery
- Complete Landscape
Maintenance

451-8025
Georgetown - Brampton

**AQUAFINE
WATER SERVICES**

WATER SOFTENERS AND
WATER TREATMENT EQUIPMENT

LOW MONTHLY RENTALS	FREE WATER TESTING & SERVICE
---------------------------	---------------------------------------

348 Euclid St. **877-6242**

**E.S.L.
CARPENTRY**

Specializing in
HOME RENOVATIONS
Experts in
Kitchen & Rec Rooms
Reasonable Prices
878-5104

STYLISH & ENERGY-EFFICIENT LEISURE HOME

Here's a practical and convenient leisure home design which is ideally suited to the narrow frontage recreational building site, and which provides nearly 1,000 square feet of well-organized finished floor area. The vertical channel sliding end shake roof of the exterior finish are designed to provide many years of maintenance-free durability, with high visual appeal and the ability to harmonize well with a wide variety of natural settings. A full-width row of clerestory windows on the salt-box roofline are designed to provide for natural solar heating if the building is correctly oriented with this glass area facing south. The roof could be alternately finished in more conventional shingles, according to individual preference and regional materials availability.

The elevated main entry leads into a compact reception foyer which, with the space-saving pocket door, forms an energy-conserving vestibule entry, or "air-lock." From the foyer, traffic moves straight down the hallway into the large rectangular living-dining room combination. The living room features a dramatic vaulted ceiling, a full-width sliding glass walk-through and a raised-hearth masonry fireplace with a built-in barbeque on the balcony side. The adjacent dining area features a hinged room divider wall which, when swung into position, creates an additional sleeping area for occasional guests.

The well-planned, galley-style kitchen provides generous counter-top work surfaces, abundant cupboard storage and a step-saving work triangle configuration. A wide work counter and snack bar divides the kitchen and living area, providing

seating for casual snacks. Adjacent to the kitchen is a convenient laundry-utility room, containing the heater, hot water reservoir, washer and a generous laundry storage closet. An entry from the single car garage enables the area to do double duty as a mud room.

Two finished bedrooms are positioned to the front of the floor plan, away from the main living area for freedom from disturbance. Each has generous closet storage and sliding glass doors which provide access to the wrap-around balcony. This balcony could easily have a hot tub or home spa installed for maximum luxury and convenience.

Plans for design No. 1-937 may be purchased either by the single set, at a cost of \$130.00 for the first set and \$25.00 for each additional set, or by the package. A five-set plan package, including the first set, is economically priced at \$185.00 and an eight-set package, also including the first set, is only \$225.00.

Whichever method you choose, please include \$9.00 for postage and handling. Ontario residents please add 7% sales tax.

Send for the current edition of Select Homes magazine, series 53, featuring imaginative decorating and home improvement ideas, plus 130 quality home plans of every type. Available for \$3.25 (\$2.00 plus \$1.25 postage and handling).

To order any of these items please send cheque or money order, payable to the Home of the Week. Address: Home of the Week, c/o The Halton Hills Herald, Unit 1, 151 Caribview Drive, Rexdale, Ontario, M9W 5E7.

**W.C.H.
PANTER
AND
DECORATOR**

Inside & Out
NO JOB TOO SMALL
Discount for Seniors
FREE ESTIMATES
877-5530

**CHATELAINE
LIGHTING**

SERVING QUELPH, ACTON &
SCARBOROUGH AREAS SINCE 1969
RESIDENTIAL - COMMERCIAL

SEE IT ON DISPLAY
NOT IN A CATALOGUE
WE ARE SHOWING
OVER 1000 FIXTURES
+ FULL RANGE OF TRACK
LIGHTING SYSTEMS
COMPLETE LINE OF
HUTCH HOUSEWARE
PRODUCTS
519
824-0401
288 YORK RD
QUELPH

**CUSTOM INSTALLED
CENTRAL
VACUUM
SYSTEMS**

**G.K. THOMPSON
& CO.**
877-7454

**SOLARI
DECORATING**

Specializing in
RESIDENTIAL INTERIOR
Free Estimates
Workmanship
Guaranteed
Call Jim
453-0398

**HALTON
Door
SYSTEMS**

Sales & Service to all types
of overhead garage doors
and electric operators, radio
controls and accessories
All Work Fully Guaranteed
877-1764