

Herald Scoreboard

Bantams oust Streetsville 7-1

MINOR FREEWHEELERS
 North Mark Sports 5
 London Life 4
 Goalkeepers for North Hanlon - Bill Trent (3).
 Assists - Glen Dean.
 Goalkeepers for London Life - David Inglis (2), Jason Knight (1).
 Assists - Brad Phee, Charlie Hancock.

Baz Motors 5
 Murray Motors 2
 Goalkeepers for Baz - Darryn Colton, Francis McLean, Ashley Bird, Jay Johnston, Eddie Powers.
 Assists - Timothy Parker, Gary Cowell, Eddie Powers, Kyle Goodie.
 Goalkeepers for Murray - Andy Dominico, Greg McEachern.
 Assists - Mike Patterson.

Knights Dairy Bar 4
 A & S Trophies 4
 Goalkeepers for Knights - Kyle Anderson, John Brooker, Colin McMurray, John Wilson.
 Assists - Donald Barnett, Stewart Teetzel, John Wilson, Chris McWilliams.
 Goalkeepers for A & S Trophies - Stephen Lee, Shane Reid, Greg Droprukha, Andy Deruchie.
 Assists - Dennis Guist (2), Deryl Sproule, Mike Tellier, John Blackmore, Stephen Lee.
 Comments - A & S Trophies made an exciting comeback in the last 3 minutes of the game scoring 3 goals to tie the Knights Dairy Bar.

MIDGET
 Bowman's Truck 8
 Mac's Mountaineer 2
 Goalkeepers for Mac's - Andy Jones, Nick Parker.
 Assists - Tom Sykes, Mike McCarthy.
 Shutout - Doug Covert.
 Comments - Mac's out hustled Bowman's to the puck and this provided the win.

Knights of Columbus 7
 Standard Products 6
 Goalkeepers for Knights - Jeff Talbot (2), Dave Reynolds (4), Dean Morgan.
 Assists - Tim Fleming (4), Brian Kruszek, John Hunter, Jeff Talbot, Dave Reynolds.
 Shutout - Dennis Mackenzie.
 Comments - Standard were outplayed in this game. Tim Fleming starred for K of C setting up 4 out of the 7 goals.

Scoti's Bank 4
 Trio Mart 3
 Goalkeepers for Scoti's Bank - Larry Taylor, Neil Diaz, Doug Reid, Dan Walters.
 Assists - Peter Bush (2), Tim Abrey, Larry Taylor.
 Goalkeepers for Trio - Chris Jassop (2), Dave Hoffman.
 Assists - Dave Hoffman, Mike Murray, Rick Succese, Alan Frealey.
 Comments - Scoti's Bank came out on fire but by the third period the flames had diminished. On the other hand Trio started too late and fell short for the loss.

BANTAM
 A.E. LePage 2
 Curvies Carpet 1
 Goalkeepers for LePage - Jim Marshall (2), Jeff Ryan.
 Assists - Jim Marshall, Dave Fisher, Scott Mincer.
 Goalkeepers for Curvies - Mark Campbell (2), Bob Kleytains, Paul Simmons, Jim Wallace.
 Assists - Brad Klavka, Brad Williams, Mike Howie.

Exchange House 7
 Robert Royal Estate 1
 Goalkeepers for Exchange - Wai Benjamin (3), Ken McDermot (2), Scott Schuffmeier, Todd Shephard.
 Assists - Barry Keen (3), Gord Patterson, Ken McDermot, Todd Norton, David Christie (2), Paul McLeod, Scott Schuffmeier.
 Goal scorers for Roberts - Chris McLean.
 Assists - Dave McKinnon.

McPherson's Base 3
 Elks Lodge 2
 Goalkeepers for McPherson's - David Tate, Chris LeBlanc, Alain Sheik.
 Assists - Alain Sheik (2), Mike Bryy.
 Goalkeepers for Elks - Neil Moore (4), Mike Flynn (2), John Van Zoosterman, Jeff Miller.
 Assists - Darrin Selby (3), James Parker (2), Jason Bay (1), Bob Anderson, Steve McCarthy, Ken Duncan, Neil Moore, Brian Cowling.

MILLERS TV 2
 Critter's Carpet 1
 Goalkeepers for Millers - John Dobson, Rob McGougan, Paul Joyce.
 Assists - Ralph Benze.
 Goalkeepers for Critter's Carpet - Mark Hillier (3), Chuck Flesher (2).
 Assists - Randy Dowdall, Brian Pincok, Folar Ramsey (2), Brad Frostby, Philip Miller, Terry Friddle.

JUVENILE
 Jr. Raiders 1
 G'ween Rams-AM 0
 Goalkeepers for Jr. Raiders - Dave Wood, Bruce Kerr, Owen Gray, Mark Waters, Don Turner.
 Assists - Mark Waters, John Seaman, Bruce Kerr.
 Goalkeepers for Rams-AM - Craig Parker (2), Gary Morrow, Mike Pines (1).
 Assists - Rick Post (1), Gary Morrow, George Parker (2), Craig Parker (3).

Jim Steuring 2

Twin Windows 4
 Goalkeepers for Jim's - Scott Murray (2), James Beecher, Scott Pasenco, Gary Froricha.
 Assists - Scott Pasenco, Paul Kolpers, Grant Mairn, Rick Greenwood, Scott Murray.
 Goalkeepers for Twin Windows - Gary Lockwood (2), Shawn Zuber, Mike Schmertz, Greg Lawr.
 Assists - Rob Spiller, Jack Woodstra, Greg Lawr (2), Gary Lockwood.
 Team pictures taken this coming weekend, be at arena at minutes before game.

MAJORATOM
 Dairy Queen 6
 Mr. Donat 6
 Goalkeepers for Dairy Queen - Craig Cooper (4), Jamie Kelman, Jamie Rutherford.
 Assists - Mike Needham, Gary Coe, Steven Little.
 Shutout - Mason Lavs.

KLAMON 7
 Chelsea Villa 9
 Goalkeepers for Klamon - R.J. Fleming (4), Jeffrey Hannah, Jason Bonneville (2).
 Assists - Scott Dobbins (2), Chris Thompson, Mark Micklethwaite (2), Ryan Snyder.
 Shutout - Craig Moore.

Carpet Barn 10
 Harvey's Tire 2
 Goalkeepers Carpet Barn - Jim Lawrence (5), Brian Montgomery, John MacLeish, Matthew Moore (3), Danny Korosic.
 Assists - John MacLeish (2), Richard Sowers (2), Danny Korosic (2), Brian Montgomery, Jim Lawrence, Craig Harrager.

Goalkeepers for Harvey's - John Sullivan, Greg Socha, Mike McLean.
 Assists - Derek Woolgar (2), Mike McLean, Sean Pederson, Marcus Thunich.

The M and M Pro Sport Bantams manhandled their Streetsville opponents last Sunday to a 7-1 victory.

The local Georgetown rep hockey team went ahead 2-0 in the first period on goals by Mark Pries. He was assisted on the goals by Jon Hammer and Chris Hodgins and Dave Bertrand.

At the 14:03 mark of the second period Louis De Paoli scored with help from Mike Teetzel. The visitors from Streetsville then got on the score-

board with a goal one minute later.

In the final period it was all Georgetown as the local Bantams connected for four goals.

Dave Bertrand was the first to score from Dean Irvine and Jeff Sholdice. Then Sholdice scored himself assisted by Mark Pries.

Teammate Dean Irvine added another from Jeff Sholdice. Then with 58 seconds left in the game Chris Hodgins scored assisted by Mike Teetzel and Louis De Paoli.

CONSOLIDATED ENERGY SERVICE
 474 Fops Ave., Georgetown
 Tel: (416) 278-2400
 • BLOWN FIBERGLASS
 • BLOWN ROCKWOOL
 • VENTILATION
WITH THIS AD \$30 OFF
 1000 RIVERVIEW, GEORGETOWN
877-4148

TEXTURED CEILINGS and PLASTER REPAIRS FALL SPECIAL
 Textured Ceiling **\$149.95**
 Any ceiling of average size
 Call John **853-2726**

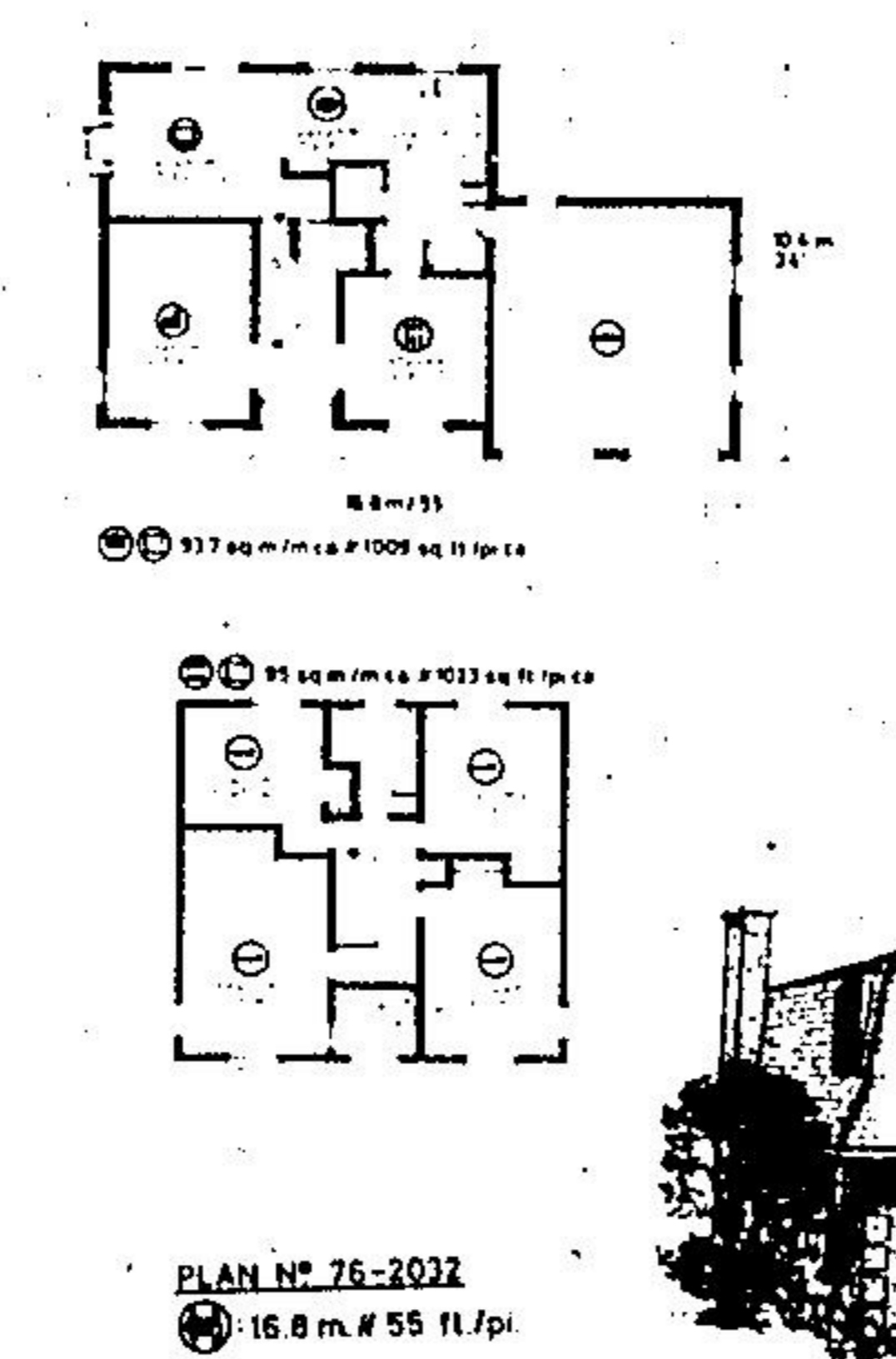
DELREX Aluminum Limited
 Aluminum Awning • Specializing in Eaves troughs • Replacement windows & patio doors
 Siding Canopies Storm Doors Windows Soffit Fascia in Living Colours
877-5383

Glenn McClure Carpentry
 ALL TYPES OF CARPENTRY WORK FOR YOUR
 - Home - Farm - Cottage - Office
 LICENSED
FREE ESTIMATES 876-4434

CHIMNEY'S BUILT & REPAIRED
 We do Structural Repairs from your chimney down to your basement!
 4 Generations of Experience
 Ed McMullen **853-1818**

Muirhead Insulation GEORGETOWN
 - Attics - Walls - Thermo Replacement Windows
YOUR LOCAL CONTRACTOR 877-7447

BUYWISE WINDOWS AND DOORS
FACTORY OUTLET
 Complete Line of Energy Saving WINDOWS AND DOORS
 - WE INSTALL -
 "The Place To Save!"
 71 MOUNTAINVIEW RD. N. UNIT 5, GEORGETOWN
877-1186



E & R SHOPPING SERVICES
 ★ TOO BUSY?
 ★ HOUSEBOUND?
 ★ BAD WEATHER?
 Let us do your shopping and errands for you - Pay on Delivery -
For More Information Call 877-8542

JOHN CAMPBELL LANDSCAPING
 Professional Design
 - Mulching Shrub
 - Pruning
 - Building Retaining Walls
 - Hedges and Fences
 - Tree Pruning & Surgery
 - Complete Landscape Maintenance
451-8025
 Georgetown - Brampton

AQUAFINE WATER TREATMENT
 WATER SOFTENERS AND WATER TREATMENT EQUIPMENT
 LOW MONTHLY RENTALS FREE WATER TESTS & SERVICE
348 South St. 877-6242

E.S.L. CARPENTRY
 Specializing in HOME RENOVATIONS Experts in Kitchen & Rec Rooms
Reasonable Prices 878-5104

W.C.H. PAINTER AND DECORATOR
 Inside & Out
 NO JOB TOO SMALL
 Discount for Seniors
FREE ESTIMATES 877-5530

CHATELAIN LIGHTING
 SEE IT OR DISPLAY NOT IN A CATALOGUE
 WE ARE SHOWING OVER 1000 FIXTURES IN A FULL RANGE OF TRACK LIGHTING SYSTEMS
 COMPLETE LINE OF HOME LIGHTING PRODUCTS
 519 824-0401
 206 YORK RD. GUELPH

CUSTOM INSTALLED CENTRAL VACUUM SYSTEMS
G.K. THOMPSON & CO. 877-7454

SOLARI DECORATING
 Specializing in RESIDENTIAL INTERIOR
 Free Estimates
 Workmanship Guaranteed
 Call Jim **453-0398**

HALTON Door SYSTEMS
 Sales & Service to all types of overhead garage doors and electric operators, radio controls and accessories
877-1764

TWO-STORY TRADITIONAL DUTCH COLONIAL HOME

Here's a stately four-bedroom, Dutch Colonial brick home which will appeal to the larger family. The plan provides in excess of 2,000 square feet of well-arranged finished floor area on its two levels. Exterior features include an asphalt shingle roof, detailed brick quoins at the corners, intricately-shaped fascia trim over the weather-protected main entry and the garage doors, and shuttered windows on the main level.

The double-doored main entry opens into a spacious open-plan reception foyer and outerwear storage area, from which traffic moves either left, into the large living room, or right, into the formal dining room. The spacious living room has windows on two sides for optimum natural lighting and cross-ventilation, inspires elegant furnishings in a traditional theme. An across-the-hall dining room for formal dinners is both readily accessible from the meal preparation area, and well-separated from the informal family area for privacy.

The kitchen-dinette-family room encompassed one full-width open-plan area to the rear of the floor plan. The U-shaped kitchen is well-planned for the busy homemaker, with a practical work triangle configuration, ample cupboard storage and generous countertop work surfaces. An adjacent laundry-utility area, with a side-by-side configuration of washer and dryer, affords maximum convenience and step-saving. The two-piece vanity bathroom just across the short hallway is easily accessible from all lower level areas of the home. The dinette has display shelves for china, and the family room/TV lounge has a raised-hearth masonry fireplace and sliding glass doors leading onto the rear-facing patio.

Abundant storage space is readily available in the full basement, accessible via stairway from the

family room. A roughed-in masonry fireplace is the basis of a future recreation room development, with the remaining area available for additional accommodations, a study, workshop and/or hobby area.

Four spacious bedrooms and a large family bathroom are positioned on the second level, accessible via stairway from the main entrance foyer. Each has excellent exposure for view, ventilation and natural light, and each has ample closet storage. The master bedroom has a three-piece ensuite bathroom with a corner-positioned shower, and windows at right angles for cross-ventilation in sultry summer weather.

This charming traditional home is well-suited to the larger building lot and provides for optimum living and entertaining facilities for the active and growing family.

Plans for design No. 76-2032 may be purchased either by the single set, at a cost of \$130.00 for the first set and \$25.00 for each additional set, or by the package. A five-set plan package, including the first set, is economically priced at \$185.00 and an eight-set package, also including the first set, is only \$225.00.

Whichever method you choose please include \$9.00 for postage and handling. Ontario residents please add 7% sales tax.

Send for the current edition of Select Homes magazine, series 54, featuring imaginative decorating and home improvement ideas, plus 130 quality home plans of every type. Available for \$3.25 (\$2.00 plus \$1.25 postage and handling).

To order any of these items please send cheque or money order, payable to the Home of the Week. Address to: Home of the Week, c/o The Halton Hills Herald, Unit 1, 151 Carlingview Drive, Rexdale, Ontario, M9W 6E7.