

Georgetown duplicate bridge club results

System! Everyone plays systems. They play weak opening two bids, four card majors, five card majors and strong one club bids. Whatever East-West uses on today's hand, they should throw away their particular system if they do not arrive at a 4 heart contract.

The success of today's hand lies not in the bidding of the cards but in the play of them. Since it does depend on what system is being used by the East-West pair whether East or West plays the hand, the opening lead will be different at each table. Whatever this lead is, either East or West must make four hearts as an unsuccessful result here is going to hurt.

Suppose East plays the four heart contract. What should South lead? Away from the Ace in spades or the King in diamonds are terrible. The rule is highest in partners bid suit (he bid nothing) or highest touching honours.

Following this last rule dictates the club Queen start. Although this lead does not win anything, it is passive and places the onus upon declarer to make his own contract.

If West plays the contract, North's most passive lead is either a low heart or a low club. Again the logic is not to give anything away. Don't help the opposition by leading high cards unless of course you have high cards to back them up. This was the hand.

South exits with a club, West takes his king, discarding a spade from dummy, and ruffs a club.

South is put back on play with the A-S. When he gets out with a spade, declarer completes the strip by winning in dummy, ruffing a spade in hand and playing a diamond to any of dummy's spots. This assures the hand against any diamond distribution.

The north-south winners last Tuesday at the

Georgetown Bridge Club were Gordon Mellow and Gwen Moores. Second went to Dan Ioannidis and Ron Rochford and third spot was held by Kay Campbell and Gladys Yeates.

The east-west winners were Brian Ayer and Petar Gostovic, followed closely by Denis Rosendale and Bob Clarke. The third went to Roy Turton and Jack Hefferman.

The Georgetown Bridge Club
Continued on page 6

• Volvo
• Toyota
• Honda

IMPORT AUTO SERVICE

ANDY'S

332 Hwy. 7 Georgetown
877-1944

We Now Sell Kerosene

• Mercedes
• Datsun
• Domestic

Armstrong Collision Centre Ltd.

— Auto — — Truck —

• Free Estimates
• All Work Is Guaranteed

247 Armstrong Ave. 877-5163

T.A.T. INSULATION LTD.
474 Page Ave., Mississauga
Tel. (416) 276-2400

• BLOWN FIBREGLASS
• BLOWN ROCKWOOL
• VENTILATION

**WITH THIS AD
\$30 OFF**

1000 CHERRYWOOD, GEORGETOWN
877-4148

TEXTURED CEILINGS and PLASTER REPAIRS FALL SPECIAL

Textured Ceiling
\$149.95

Any ceiling of average size
Call John
853-2726

DELREX Aluminum Limited

Aluminum Awnings • Specializing in
Exteriors • Replacement
Storm Doors • Windows
Screens • Fascia in Living
Colours

877-5383

Glenn McClure Carpentry

ALL TYPES OF CARPENTRY WORK FOR YOU

— Home
— Farm
— Cottage
— Office

LICENSED
FREE ESTIMATES
878-4434

CHIMNEY'S BUILT & REPAIRED

We do Structural Repairs from your chimney down to your basement

Generations of Experience

853-1818

Muirhead Insulation GEORGETOWN

— Attics
— Walls
— Thermo Replacement Windows

YOUR LOCAL CONTRACTOR

877-7447

BUYWISE
WINDOWS AND DOORS

FACTORY OUTLET
Complete Line of Energy Saving
WINDOWS AND DOORS

— WE INSTALL —
"The Place To Save!"
71 MOUNTAINVIEW RD. N.
UNIT 5, GEORGETOWN

877-1186

E & R SHOPPING SERVICES

★ TOO BUSY?
★ HOUSEBOUND?
★ BAD WEATHER?

Let us do your shopping and errands for you —
— Pay on Delivery —
For More Information
Call **877-8542**

JOHN CAMPBELL LANDSCAPING

• Professional Design
• Retaining Walls
• Fencing
• Paving
• Decking
• Excavation and Installation
• Tree Pruning & Surgery
• Complete Landscape Maintenance

451-8025

Georgetown — Brampton

AQUAFONE WATER FILTERS

WATER SOFTENERS AND WATER TREATMENT EQUIPMENT

LOW MONTHLY RENTALS | FREE WATER TESTING & SERVICE

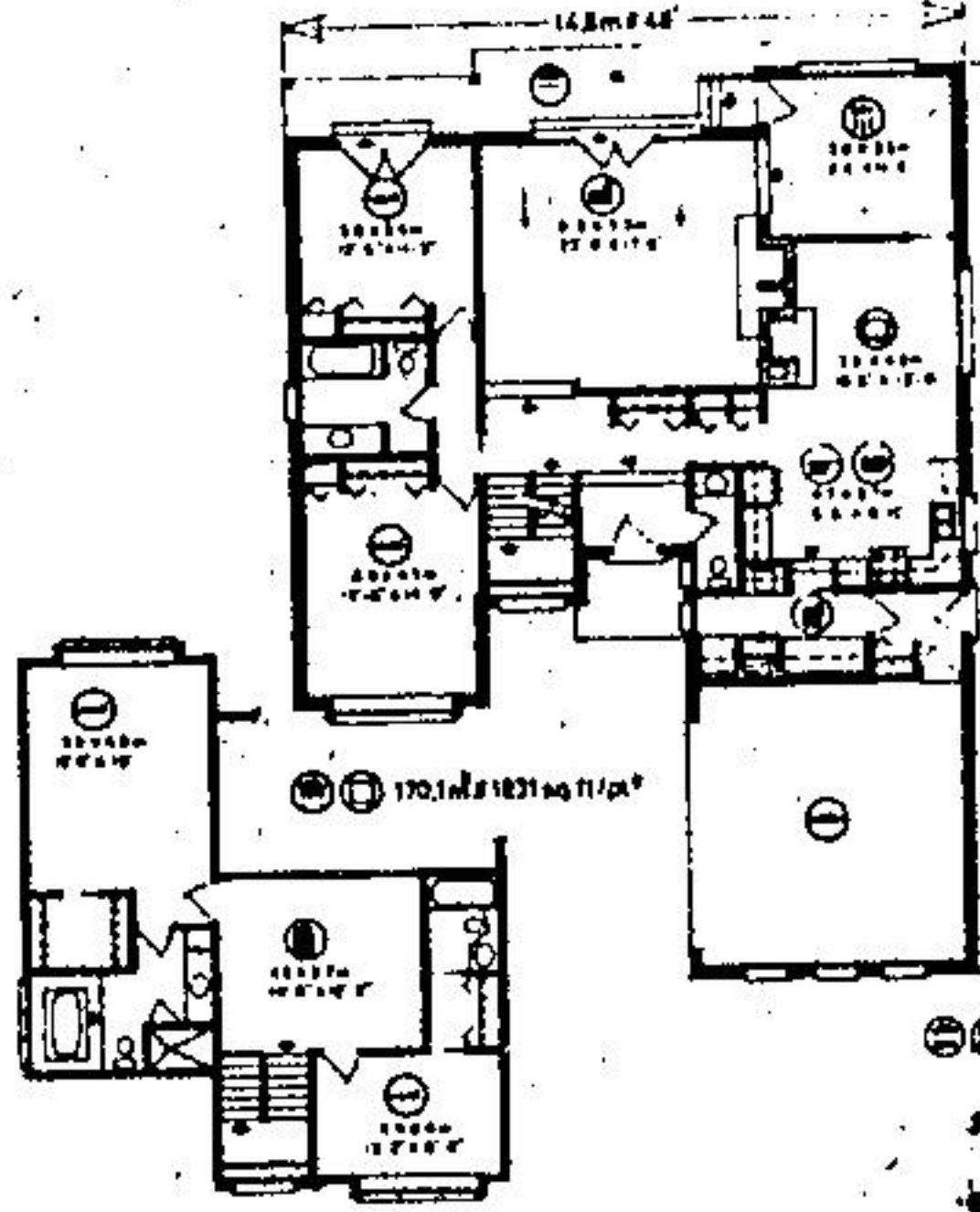
348 Empire St. 877-6242

E.S.L. CARPENTRY

Specializing in HOME RENOVATIONS

Experts in Kitchen & Rec Rooms

Reasonable Prices
878-5104



HOME OF THE WEEK



STATELY TUDORQUE HOME WITH A REAR VIEW

This luxurious four-bedroom two-storey home design bears a strong resemblance to the country manor homes of rural England, with stucco and barge board trim, heavy casement-style windows and abundant use of brick veneer. It is well suited to the wide frontage residential building lot and contains almost 2,700 square feet of finished floor area on two levels. A full basement provides additional space for the future development of recreational facilities such as a home workshop, a pantry, luggage storage, or whatever combinations individual tastes and requirements dictate.

The charmingly rustic barn-style entry leads into a spacious reception foyer, which is sunken two steps from the main living level. The foyer contains a two-piece vanity bathroom for guest accommodation. From the foyer, traffic moves down two steps into the sunken living room, which features a wide, cantilevered-hearth masonry fireplace and log storage, and French doors leading onto the lower-level rear patio. A spacious dining room is elevated from the living room, and also provides access to the patio.

A well-planned L-configuration kitchen has an excellent work triangle, generous countertop work surfaces and abundant cupboard storage facilities. A large family room/denette is adjacent to the kitchen. The family room has a cantilevered-hearth masonry fireplace, which is the rear side of the living room unit. A convenient pocket door separates the family room/denette from the dining room, thus providing for excellent separation of casual family meals and formal dining.

Two lower level bedrooms are positioned on either side of the master bedroom is a wing well-

separated from the main entertaining area, for freedom from disturbance. Each has excellent closet storage facilities and good natural lighting. Each of the two upper level bedrooms is a self-contained luxury suite with separate ensuite bathroom and walk-in closet. The master bedroom has a four-piece ensuite bath with shower and a corner-positioned sunken tub. The two upstairs bedrooms share a central den/lounge area, which could be decorated according to individual family preferences.

An enclosed two-car garage, with access to the mud room off the laundry-utility complex to the rear of the kitchen, and a full basement for future development, complete the convenience features of this impressive and luxurious design.

Plans for design No. 80-2674 may be purchased either by the single set, at a cost of \$130.00 for the first set and \$28.00 for each additional set, or by the package. A five-set plan package, including the first set, is economically priced at \$185.00 and an eight-set package, also including the first set, is only \$225.00.

Whichever method you choose, please include \$9.00 for postage and handling.

Send for the current edition of Select Homes magazine, series 54, featuring imaginative decorating and home improvement ideas, plus 130 quality home plans of every type. Available for \$3.25 (\$2.00 plus \$1.25 postage and handling).

To order any of these items please send cheque or money order, payable to the Home of the Week. Address to: Home of the Week, c/o The Halton News Herald, Unit 1, 181 Carlingview Drive, Rexdale, Ontario, M9W 5E7.

W.C.H. PAINTER AND DECORATOR

Inside & Out
NO JOB TOO SMALL
Discount for Seniors
FREE ESTIMATES
877-5530

CHATELAINE LIGHTING

SERVING QUELPH, ACTON & SURROUNDING AREAS SINCE 1969
RESIDENTIAL — COMMERCIAL

SEE IT ON DISPLAY NOT IN A CATALOGUE
WE ARE SHOWING OVER 1000 FEATURES
• FULL RANGE OF TRACK LIGHTING SYSTEMS
• COMPLETE LINE OF HOME HOLDING PRODUCTS

519
824-0401
JIM YORK RD. QUELPH

CUSTOM INSTALLED CENTRAL VACUUM SYSTEMS

G.K. THOMPSON & CO.
877-7454

SOLARI DECORATING

Specializing in RESIDENTIAL INTERIOR

Free Estimates
Workmanship Guaranteed
Call Jim
453-0398

HALTON DOOR SYSTEMS

Sales & Service to all types of overhead garage doors and electric operators, radio controls and accessories

All Work Fully Guaranteed
877-1764

THE HAND:

Bd. No. 8
Dir. W
Vul. 0

S-8742
H-J3
D-J6
C-100642

S-103
H-A10876
D-Q73
C-K87

S-KQ65
H-Q942
D-A1008
CA

S-AJ9
H-K5
D-K542
C-QJ53

THE ANALYSIS:

Most roads for E-W lead to a reasonable 4-H contract. If East opens 1-D, West responds 1-H, which East raises to three (East's singleton A-C is a determining factor whether or not he should jump raise); if East instead opens 1-H, South will probably offer some opposition in the form of a take-out double but E-W have found their big fit immediately; finally, if East starts with 1-S, West should respond 1 NT and the pair will find their heart fit on the second round. In the play, declarer can avoid the diamond guess by stripping out the hand.

Assuming West is declarer and North leads a club, declarer wins and plays off two rounds of