

Duplicate Bridge Club

Last week at the Georgetown Duplicate Bridge Club, the members were treated to the Canada-Wide Olympiad Fund Game.

This game is held in order to promote and sponsor a Canadian bridge playing pair to national level competition. It is at the club level where these players start.

When a pair is successful at the club level, this winning pair travels to a regional competition where all the club winners meet and play to decide a regional championship pair.

This process continues on through district and provincial to a national pair.

This game is unique in the sense that all the hands are pre-dealt. The club director receives, in the mail, copies of what the hands will be in the game. The first priority of the game is therefore to duplicate all the boards. Then the play commences.

At the end of the evening, all the bridge players receive an explanation of each hand that they played during the evening. This allows every player the opportunity to discover that which is successful in their personal system and that which requires more thought to perfect.

Such an evening of bridge as this offers every player the courtesy of congratulations on a hand well bid when they reach the best possible conclusion. This was one such hand.

Bd. No. 13
Dir. N
Vul. Both

S-K75
H-J83
D-K764
C-J92

S-986432
H-AK64
D-QJ
C-A

S-10
H-Q10972
D-1053
C-KQ108

Some East-West pairs may reach a not totally unreasonable 6 spade contract, but this will occur only where East opens 1 diamond and raises spades on the second round. West cannot help but visualize the perfect fit and will probably Blackwood his way to slam.

Although this sequence won't be found very often,

all declarers in a spade contract should take twelve tricks. Assume North finds the best lead of a trump (no lead hurts), declarer wins in dummy, noting South's drop of the ten, comes to his hand with the club ace and lays down the diamond queen. When this holds, West cashes the heart ace, ruffs a heart in dummy, trumps a club and ruffs another heart on board with the spade ace. After cashing the diamond

ace and trumping a club, West's remaining cards are the 988 of spades and the heart king.

The spade 9 loses to North's king but North must put declarer back in his hand to draw the outstanding trump. Note the key features of the play: the early diamond finesse to maintain communications and cashing the diamond ace so that North will have to put declarer back into his hand to draw

the remaining trump.

The Over-all winners in the special game were Bob Clarke and Denis Rosendale with Grant Real and Jack Krane a very close second. Third spot went to Art Kwei and Bill Dinan.

The Georgetown Bridge Club invites bridge players to enter in the quiet fray of a bridge game held at the Legion hall every Tuesday night. Game time is 7:45. Come and play bridge!

Nursery Christmas bazaar

Raffles, door prizes and a host of great Christmas gift ideas are yours for the choosing Nov. 20 at the Hornby Co-op Nursery School's fourth annual bazaar. There'll be crafts, baking, used toys, clothing, a white elephant table and a kid's corner, as well as a raffle draw at 1:30 p.m. It all happens at the school, located at the corner of Steeles Avenue and Trafalgar Road, from 9 a.m. to 2 p.m. And don't forget, Santa himself plans to pay a visit about 1 p.m.

Got an intriguing recipe which others might enjoy? The North Halton Association for the Mentally Retarded is compiling a book of 100 favorite recipes ready for public sale, all proceeds earmarked for Association projects. Call 877-5557.

NHAMR recipes

Model airplanes

Come in and visit our Model Airplane Display Dec. 4 from 2 p.m. Drop in and ask questions. At the Georgetown library only.

T.A.7 INSULATION LTD.
474 Fergus Ave., Markham
Tel. (416) 278-2488

- BLOWN FIBERGLASS
- BLOWN ROCKWOOL
- VENTRATION

**WITH THIS AD
\$30 OFF**

NECK CLAWFORD, GEORGETOWN
877-4148

**TEXTURED CEILINGS
and
PLASTER REPAIRS
FALL SPECIAL**

Textured Ceiling
\$149.95

Any ceiling of average size
Call John
853-2726

**DELREX
Aluminum Limited**

Aluminum Awning Specializing in
Eavestroughs replacement
Siding windows & patio doors

Canopies
Storm Doors
Windows
Soffit
Fascia in Living
Colours

877-5383

**Glenn McClure
Carpentry**

ALL TYPES OF
CARPENTRY WORK
FOR YOUR

- Home
- Farm
- Cottage
- Office

LICENSED
**FREE ESTIMATES
878-4434**

**CHIMNEY'S
BUILT & REPAIRED**

We do Structural Repairs
from your chimney down
to your basement

4 Generations
of Experience

853-1818

**Muirhead
Insulation
GEORGETOWN**

- Attics
- Walls
- Thermo Replacement Windows

**YOUR LOCAL
CONTRACTOR
877-7447**

**BUYWISE
WINDOWS & DOORS**

FACTORY OUTLET
Complete Line of Energy Saving
WINDOWS AND DOORS
— WE INSTALL —
"The Place To Save!"
71 MOUNTAINVIEW RD. N
UNIT 5, GEORGETOWN
877-1186

*** SALES * SERVICE
* REPAIRS
WATER PUMPS**

We are Equipped to handle
SUBMERSIBLE PUMPS
and we are as close
as your telephone

**BOYES
PLUMBING**
(519) 855-4232

**JOHN CAMPBELL
LANDSCAPING**

- Professional Design
- Interlocking Stones
- Plants
- Sodding
- Retaining Walls
- Machinery and Irrigation
- Tree Pruning & Surgery
- Complete Landscape Maintenance

451-8025
Georgetown — Brampton

**AQUAPINE
WATER PUMPERS**

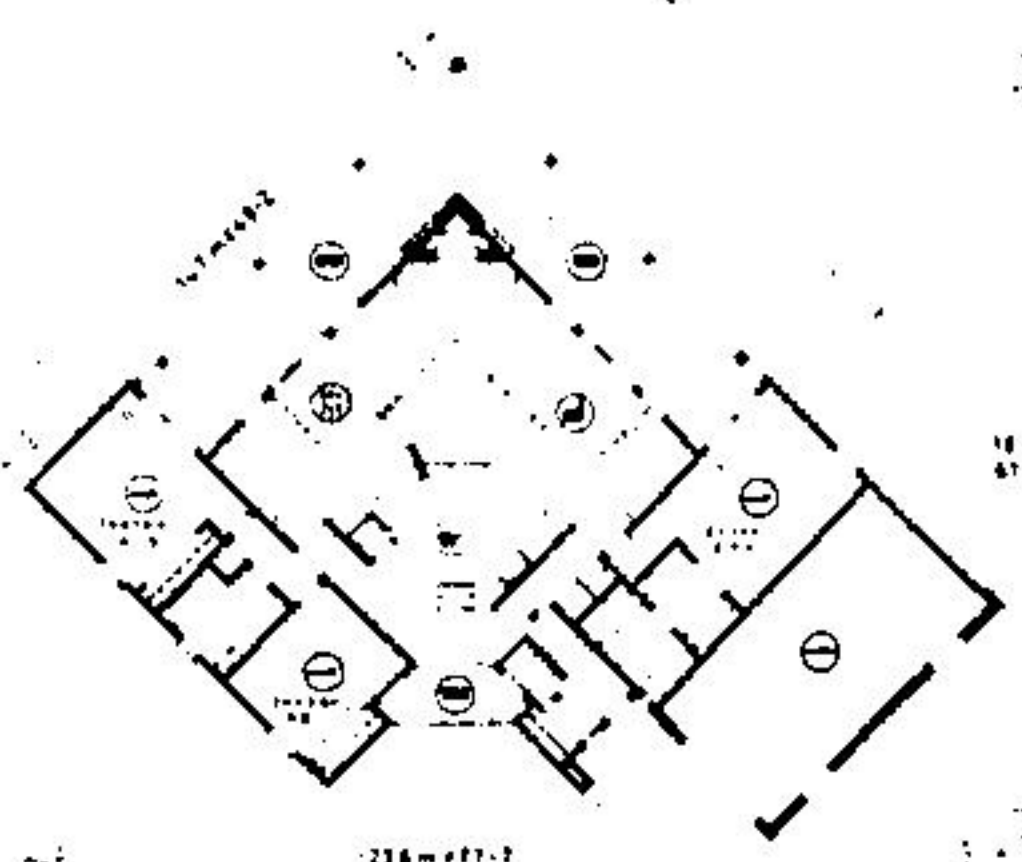
WATER SOFTENERS AND
WATER TREATMENT EQUIPMENT

LOW MONTHLY RENTALS | FREE WATER TESTING & SERVICE

348 Guelph St. **877-6242**

**E.S.L.
CARPENTRY**

Specializing in
HOME RENOVATIONS
Experts in
Kitchen & Rec Rooms
Reasonable Prices
878-5104



PLAN NO. 79-1530
 1422 sq ft 1530 sq ft (p.c.)
 1477 sq ft 1481 sq ft (2nd fl. (min.))
 236 sq ft 771 sq ft (1st fl. (max.))



OPEN-PLAN SPLIT ENTRY HOME HAS ISLAND KITCHEN

Here's a smartly traditional three bedroom home design of the split entry type which is perfectly suited to the medium frontage residential building lot, and which provides in excess of 1,500 square feet of finished floor area, for present use, and as great an amount of space available on the unfinished lower level, for future development and finishing. The solid and comfortable-appearing exterior presents an impressive facade finished in horizontal channel siding and fieldstone veneer, with fieldstone chimney and heavy shake roof. The masonry traditional impression of the exterior is reinforced by the small-paned windows, front-facing, spindle-railed balcony and barn motif accents on the entry and single-car garage doors.

The weather-sheltered main entry leads into a compact reception foyer and outerwear storage area, from which twin staircases lead either down to the unfinished lower level, or up to the main living area. The latter opens into a short hallway, which leads traffic to the right and into the large and open living-dining room combination; or left, into the large island kitchen area. The living room features a corner-positioned, cantilevered-hearth masonry fireplace and sliding glass doors opening onto the wrap-around rear patio.

The interesting and functional island kitchen affords an excellent step-saving work triangle, generous countertop work surfaces and abundant cupboard storage. A wide pass-through provides easy access to the large snack bar counter on the dining room side. This pass-through could easily be repeated on the living room side, and a wet bar established for those who entertain a great deal.

The spacious dining area provides for the installation of built-in china storage facilities and a formal dining room suite. It features sliding glass doors to the wrap-around balcony, for easy access to outdoor dining in fine weather.

The large master bedroom suite is accessible from the living room; and is well-separated from the two secondary bedrooms, for freedom from disturbance. It features a double walk-through closet and a three-piece ensuite bathroom with tub, as well as

sliding glass doors leading onto the wrap-around balcony. Both secondary bedrooms have generous closet storage facilities and excellent exposure for view, ventilation and natural light. The rear-facing bedroom has a sliding door access to the balcony, while the front-facing unit has access through the hallway to the front balcony. Sliding glass doors could easily be installed, making this balcony semi-private for the greater convenience of the second bedroom occupant.

The unfinished lower level has a roughed-in masonry fireplace and roughed-in plumbing for the development of a downstairs bathroom. The lower level offers abundant space for the future development of additional bedrooms or recreational facilities such as a family room, recreation room/wet bar or whatever combination suits specific individual requirements.

This is an excellent home design, affording maximum flexibility and adaptability to individual family needs. The abundant glass area and wrap-around rear-facing balcony make the design a particularly good choice for the family which has acquired a building lot with a natural panorama to the rear.

Plans for design No. 79-1530 may be purchased either by the single set, at a cost of \$130.00 for the first set and \$25.00 for each additional set, or by the package. A five-set plan package, including the first set, is economically priced at \$185.00 and an eight-set package, also including the first set, is only \$225.00.

Whichever method you choose please include \$9.00 for postage and handling. Ontario residents please add 7% SALES TAX.

Send for the current edition of Select Homes magazine, series 54, featuring imaginative decorating and home improvement ideas, plus 130 quality home plans of every type. Available for \$3.25 (\$2.00 plus \$1.25 postage and handling).

To order any of these items please send cheque or money order, payable to the Home of the Week, C/O The Halton Hills Herald, Unit 1, 151 Carlingview Drive, Rexdale, Ontario, M9W 5E7.

HOME OF THE WEEK

**W.C.H.
PAINTER
AND
DECORATOR**

Inside & Out
NO JOB TOO SMALL
Discount for Seniors
FREE ESTIMATES
877-5530

**CHATELAINE
LIGHTING**

SEVEN GUELPH, ACTON &
SURROUNDING AREAS SINCE 1969
RESIDENTIAL — COMMERCIAL

SEE IT ON DISPLAY
NOT IN A CATALOGUE
WE ARE SHOWING
OVER 1000 FIXTURES
* FULL RANGE OF TRACK
LIGHTING SYSTEMS
COMPLETE LINE OF
MULTI-MOUNTING
PRODUCTS

519
824-0401
740 YORK RD
GUELPH

**CUSTOM INSTALLED
CENTRAL
VACUUM
SYSTEMS**

**G.K. THOMPSON
& CO.
877-7454**

**SOLARI
DECORATING**

Specializing in
RESIDENTIAL INTERIOR
Free Estimates
Workmanship
Guaranteed
Call Jim
453-0398

**HALTON
Door
SYSTEMS
LTD.**

Sales & Service to all types
of overhead garage doors
and electric operators, radio
controls and accessories
All Work Fully Guaranteed
877-1784

**\$SAVE
ON HEATING
COSTS**

We can caulk your windows, doors, chimneys, etc. to save you energy. Lowest cost in the area.

We also do
EAVESTROUGH CLEANING!

Special Discounts for
Senior Citizens.

**FOR MORE
INFORMATION CALL
877-8247**