

# White-Westinghouse



## 18.2 CUBIC FOOT SIDE BY SIDE REFRIGERATOR

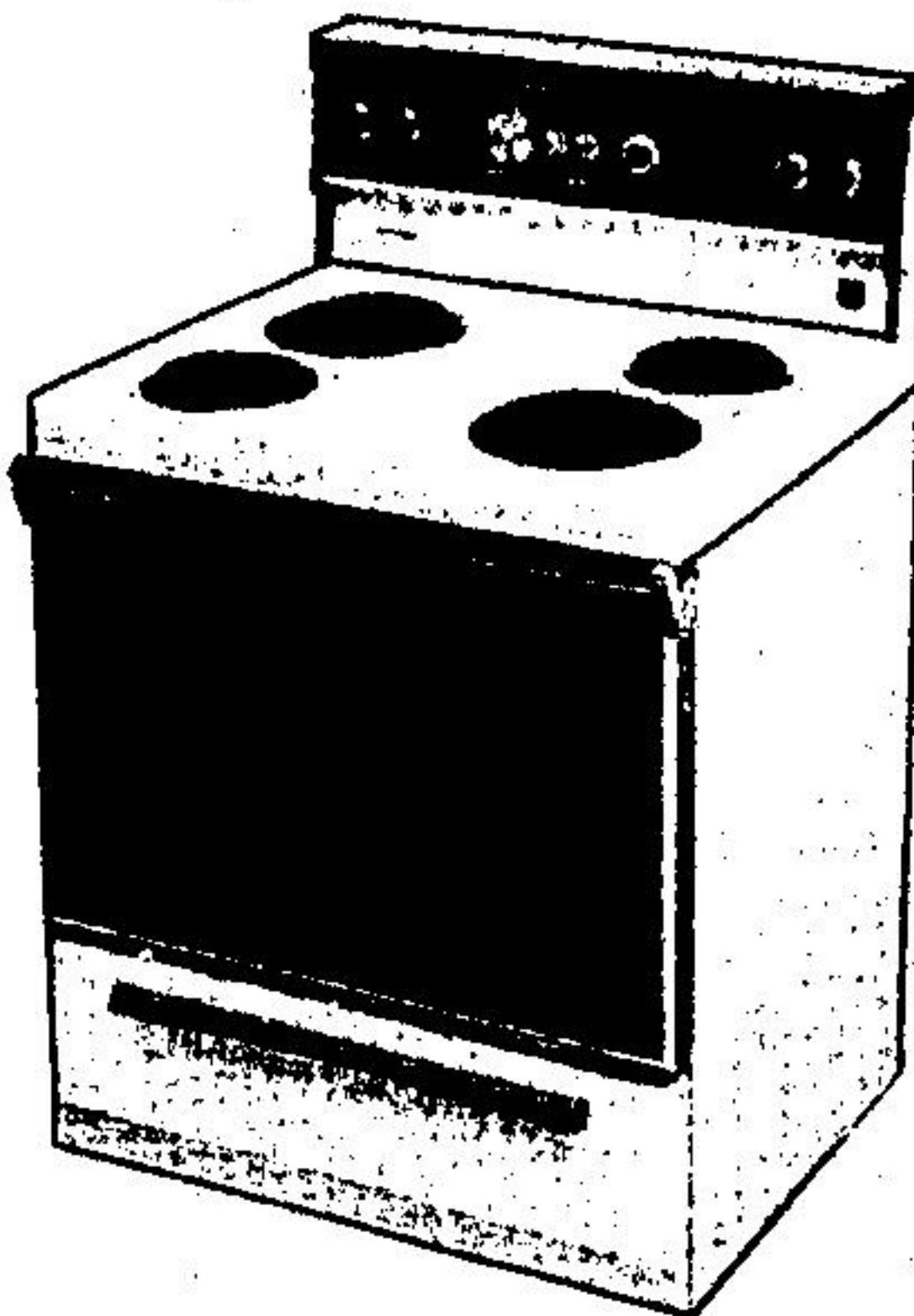


- deluxe walnut handles and trim underneath
- strong cantilever shelves
- easy glide rollers
- energy efficient foam insulation
- optional ice maker
- steel interior liner
- butter conditioner
- juice can dispenser
- lighted interior
- energy saver switch

**INCREDIBLE OFFER** **\$997<sup>95</sup>**



## 30 INCH DELUXE RANGE



- 4 cubic foot easy clean oven, largest available
- large full width storage drawer
- deluxe plug-out elements
- walnut towel bar handle
- delay, cook, hold rotary timer
- porcelain drip bowl
- appliance outlet and more!

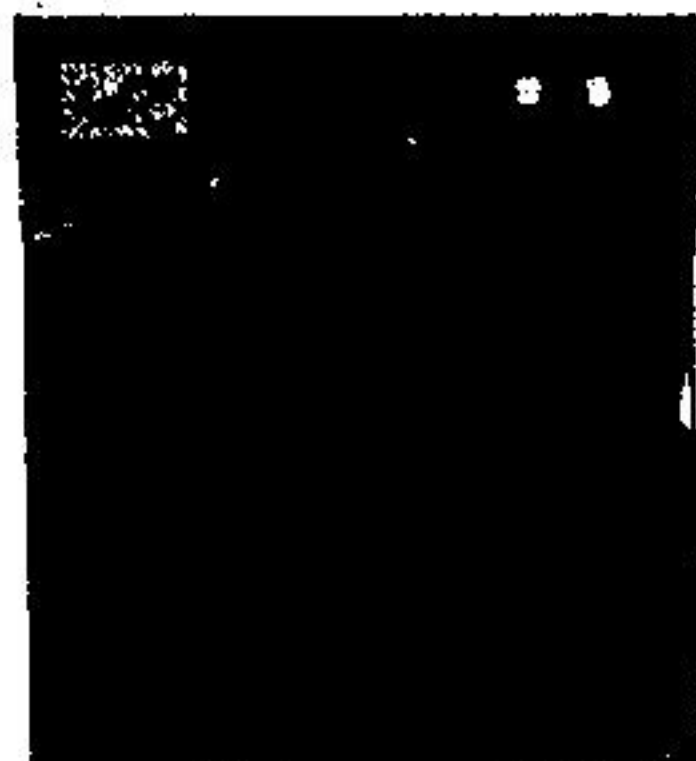
**\$548<sup>95</sup>**



**WE'LL BEAT ANYBODY'S PRICE — MODEL FOR MODEL — ALL THE TIME!!**



## White-Westinghouse BUILT-IN APPLIANCES



**White-Westinghouse Wall Oven  
WB851**

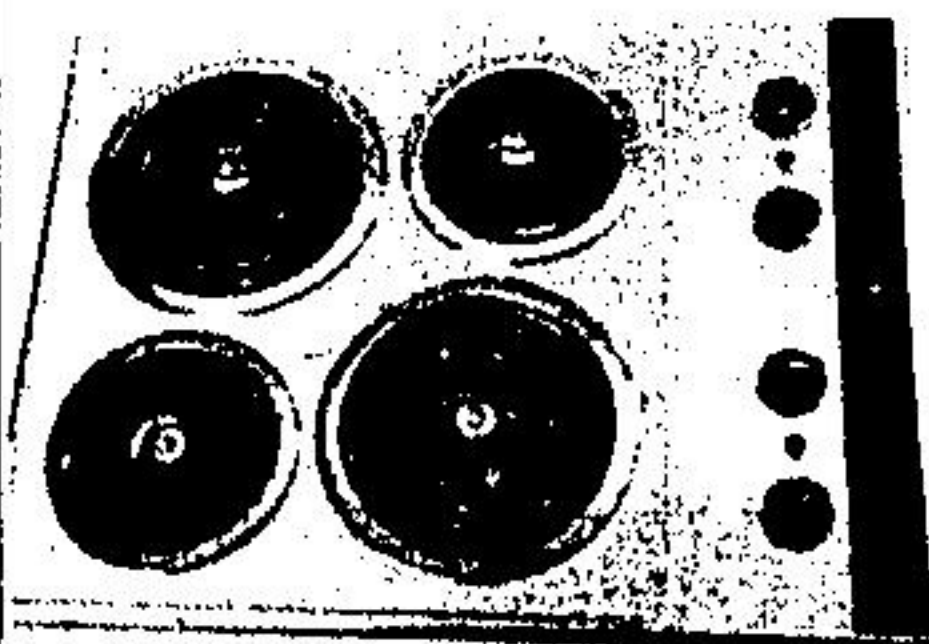
- ◀ delay, cook and hold timer
- ◀ Roastmeter
- ◀ Rotisserie
- ◀ Variable bake-broil control
- ◀ reversible side-swing door

**\$528<sup>95</sup>**

**White-Westinghouse  
Platform Range  
WP821**

- ◀ 2 deluxe 8 inch plug-out elements
- ◀ 2 deluxe 6 inch plug-out elements
- ◀ infinite heat controls
- ◀ easy to keep clean

**\$248<sup>95</sup>**



## White-Westinghouse 13.6 CUBIC FOOT REFRIGERATOR



- ◀ frozen storage of 112.3 lbs./51.0 kg
- ◀ meat keeper
- ◀ removable door guards
- ◀ foamed-in-place insulation
- ◀ adjustable glide out rollers
- ◀ energy saver

**\$587<sup>95</sup>**



## HOME & RURAL APPLIANCE DISTRIBUTORS



**BRAMPTON**  
338 QUEEN ST. EAST  
451-9320



**MISSISSAUGA**  
1024 DUNDAS ST. EAST  
275-1700



**HAMILTON**  
317 NASH RD. NORTH  
578-1700