

**Limehouse**

# Three weddings delight residents of village

By Mrs. A.W. BENTON  
Herald Correspondent  
877-5458

Congratulations to Kathy Thomson and Brian Lovell, who were married in Trinity United Church in Acton Sept. 18.

The reception following was in Rockrose Hall, Rockwood.

Also congratulations to Wendy Brown and Brian Moore, who were married in Limehouse Presbyterian Church by Rev. Peter Barrow the same afternoon with their reception in the Legion Hall at Erin.

And also to Heather Mulder and Garnet Wansall, whose wedding was at noon Sept. 18, in the Christian and Missionary Alliance Church, Georgetown, with their reception following there.

Euchre parties remind us that winter is coming soon. The first one for this year will be held in Limehouse Memorial Hall Oct. 13 at 8 p.m. Free lunch, prizes and a good time are promised by the Women's Institute. Rev. F.N. Young, former minister of Limehouse Presbyterian Church will be welcomed back as guest preacher for the 121st anniversary service Sept. 26 at 11 a.m. The ladies will serve a substantial lunch afterwards.

Congratulations to Allen Cunningham, who won first in tractor plowing in the four furrow class, and to his brother Wayne, who won third in the two furrow tractor class, at the Halton County Plowing Match at Trafalgar last Saturday.

Deborah Clarke has enrolled in George Brown College, Toronto. We wish her good luck in her studies there.

Congratulations to those who won prizes at Georgetown Fall Fair. The fair was quite a success in every way.

**CHATELAINE LIGHTING**  
SERVING HALTON, ACTON & DUNDASVILLE AREAS SINCE 1969  
RESIDENTIAL - COMMERCIAL  
SEE IT ON DISPLAY BUY IN A CATALOGUE  
WE ARE SHOWING OVER 1000 FIXTURES  
• FULL RANGE OF TRACK LIGHTING SYSTEMS  
• COMPLETE LINE OF INSIDE LIGHTING PRODUCTS  
518 824-0401 200 YORK RD. GUELPH

**W.C.H. PAINTER AND DECORATOR**  
Inside & Out  
NO JOB TOO SMALL  
Discount for Seniors  
FREE ESTIMATES  
877-5530

**DELREX Aluminum Limited**  
Aluminum Awning Siding Canopies Storm Doors Windows Soffits Fascia in Living Colors  
Specializing in replacement windows & patio doors  
877-5383

**BUOWISE WINDOWS AND DOORS**  
FACTORY OUTLET  
Complete Line of Energy Saving WINDOWS AND DOORS  
- WE INSTALL -  
"The Place To Save!"  
71 MOUNTAINVIEW RD. N. UNIT 5, GEORGETOWN  
877-1186

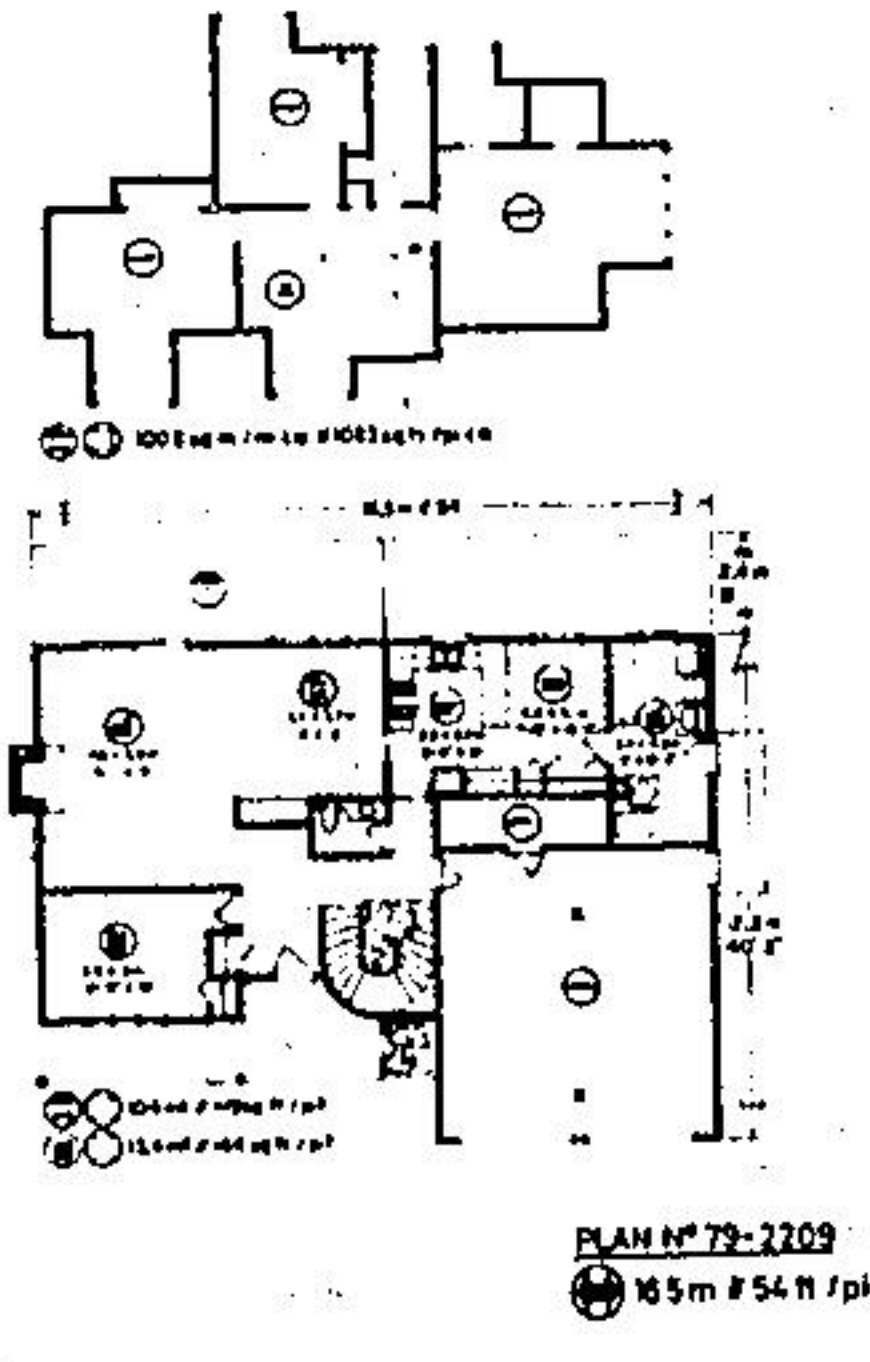
**J.C.P.**  
877-1158  
PLUMBING & CONTRACTING  
Residential Plumbing Alterations, Additions Rec. Room Conveniences  
Anywhere - Please Phone  
877-1158

**B.A.M. Construction Ltd.**  
Home Improvements Renovations - Alterations  
• Carpentry • Eavesdropping • Siding • Roofing  
FREE ESTIMATES  
794-0383  
all work guaranteed

**MEL TAYLOR ALUMINUM LIMITED**  
FEATURING  
Energy Efficient Replacement Windows • Patio Doors • Full Storm Doors  
Aluminum Home Improvements  
20 YEARS EXPERIENCE  
877-6772

**JOHN CAMPBELL LANDSCAPING**  
• Professional Design • Planting • Pruning • Mulching • Watering • Lawn Care • Snow Removal • Tree Planting & Surgery • Complete Landscaping Services  
873-1116 Georgetown  
451-8025 Brampton

# HOME OF THE WEEK



TRADITIONAL TWO-STORY WITH REAR VIEW

Here's a stunning three-bedroom home design which is reminiscent of the Norman cottages and thatched roof homes of rural Europe. Perfectly suited to the medium-to-wide frontage residential building lot, the plan provides for in excess of 2,200 square feet of finished floor area on two levels, and offers the medium-size family a sense of spaciousness and luxury at every turn. The white stuccoed exterior, brick chimney, shutter-accented windows and upper level dormers, and shingle or shake roof, present a solidly traditional facade which lends an impression of permanence and comfort, which feeling is carried forward in the high style and charm of the interior design features.

The weather-protected porch-style main entry leads into a large and open reception foyer and closet storage area, which is flanked by the interesting semi-circular stairway to the second storey. Forward and naturally left takes one into the large L-shape living-dining room combination, which features a centrally-positioned masonry fireplace, alcove garden and sliding glass doors to a wide rear patio. The secluded dining area separates from the kitchen via convenient pocket door.

The well-planned U-shape kitchen has an excellent work triangle pattern, abundant cupboard storage and generous countertop work surfaces. The adjacent nook provides abundant space for traditional portable furniture or, may be separated from the kitchen via snack bar counter for those who prefer. Connecting to the nook is a very large laundry-utility complex, featuring a side-by-side configuration of washer-tub-dryer, and a long, laundry-folding counter.

A centrally-positioned two-piece vanity

bathroom, and an enclosed two-car garage, with access to an internal garden tool storage area, complete the main level conveniences of this excellent plan.

All three bedrooms are positioned on the second storey, grouped around the central bath and linen storage closet. Each has an interesting dormer alcove, generous closet storage and excellent exposure for view and ventilation. The master suite has a full walk-in closet and a three-piece ensuite bath with tub. The central bath has sufficient countertop area to allow for the installation of a second vanity sink, should such prove necessary and desirable.

A large upper storey den or lounge area overlooks the circular stairway and provides a seating alcove, thanks to the dormer window. This will be a favorite spot for active children.

Plans for design No. 79-2209 may be purchased either by the single set, at a cost of \$130.00 for the first set and \$28.00 for each additional set, or by the package. A five-set plan package, including the first set, is economically priced at \$185.00 and an eight-set package, also including the first set, is only \$225.00.

Whichever method you choose, please include \$9.00 for postage and handling.

Send for the current edition of Select Homes magazine, series 54, featuring imaginative decorating and home improvement ideas, plus 130 quality home plans of every type. Available for \$3.25 (\$2.00 plus \$1.25 postage and handling).

To order any of these items please send cheque or money order, payable to the Home of the Week. Address to: Home of the Week, C/o The Halton Hills Herald, Unit 1, 151 Carlingview Drive, Rexdale, Ontario, M9W 5E7.

**E.S.L. CARPENTRY**  
Specializing in HOME RENOVATIONS  
Experts in Kitchen & Rec Rooms  
Reasonable Prices  
878-5104

**B. PICARD**  
ALCAN  
• Aluminum Siding • Home Improvements • Soffit/Fascia/Roofing • 5" Seamless Eavesdropping • Windows & Doors •  
FREE ESTIMATES  
877-8247

CUSTOM PROFESSIONAL CARPENTRY  
**C.P.C. CARPENTRY**  
• All phases of carpentry • Solar Additions • Custom Homes • Additions & Renovations • NO JOB TOO SMALL!  
Free advice & estimate  
877-5655

**AQUAFINE**  
WATER REFINER  
WATER SOFTENERS AND WATER TREATMENT EQUIPMENT  
LOW MONTHLY RENTALS  
FREE WATER TESTING & SERVICE!  
348 Guelph St. 877-6242

★ SALES ★ SERVICE ★ REPAIRS  
**WATER PUMPS**  
We are Equipped to handle  
**SUBMERSIBLE PUMPS**  
and we are as close as your telephone  
**BOYES PLUMBING**  
855-4232

**LEON'S ROOFING**  
All types Shingles, Flat New work - Repairs  
ALSO EAVESTROUGHING & SHEET METAL WORK  
24 HR. EMERGENCY SERVICE  
877-4124

**TOPLINE**  
Painting & Minor Home Repairs  
FREE ESTIMATES  
877-2868  
877-5940

**LOSE 17 TO 25 POUNDS IN JUST 6 WEEKS**  
CALL TODAY FOR A FREE CONSULTATION  
**DIET CENTER**  
70 MILL ST.  
877-2900  
877-2277  
HOURS:  
Monday to Friday 8:00 a.m. - 12:30 p.m. 2:30 p.m. - 8:30 p.m.  
Saturday 9:00 a.m. - 12 Noon  
Nutritional Behaviour Classes  
Thurs: 7:30 p.m. - 9:30 p.m.