

## THE HILLS

### Lorne School reunion Sat.

So successful was its 1979 reunion that alumni of Lorne School have arranged a centennial reunion Sept. 11 from 2 to 7 p.m. in the Ospringe School auditorium. All former pupils and teachers, as well as their families and friends, are welcome to attend and get reacquainted, enjoy an entertaining program and sit down to a chicken dinner at 5 p.m. Cost is \$5 per person. Centennial plates will be available. For more information, phone 853-1851.

### For Portuguese

Area Portuguese-speaking residents are welcome to attend a series of monthly sessions on family life issues starting Sept. 26 in Mississauga. Programs will be held at Santissimo Salvador do Mundo Parish, 1212 Melton Dr. and are sponsored by the Peel Dufferin Catholic Services, the Settlement Services of Peel and the Addiction Research Foundation. Reunions mensais em Portugues para discussao de interesses familiares. Compartilhe as suas experiencias com outras familias. A primeira reuniao sera no dia 26 de Setembro as 6 da tarde. Todos sao bem-vindos.

### Air force reunion

Canadian air force personnel who served at Number 6 SFTS Dunnville during the war get their 37th annual opportunity to renew old acquaintances Sept. 17, 18 and 19. A Friday evening reception kicks off the weekend in Dunnville, which also includes a golf tournament, a parade, a demonstration of ultralight aircraft, a memorial service and a fly-past. Contact Frank Scholfield at PO Box 187, Dunnville, Ont., N1A 2X5.

### Mountsberg morning

The Halton Region Conservation Authority has a very special "Morning at Mountsberg" planned Sept. 25 at the huge conservation area near Campbellville. Everyone is welcome to come and enjoy the puppet show, musical entertainment, wildlife displays, the hawk rehabilitation exhibit, falconry and bird banding demonstrations, horse-drawn wagon rides and a special tree-planting ceremony, all between 9:30 a.m. and noon. Call the Authority at 878-4131 for more information.

### Witnesses' annual

Halton Hills Jehovah's Witnesses will host approximately 4,000 fellow worshippers Oct. 1 and 2 when the organization's annual business meeting takes place at the Norval Assembly Hall. Witnesses' leaders from around the world will have their first look at the new printing and educational centre in the Moore Park area of Georgetown before settling down to business in Norval, which includes the establishment of policy covering the next two years.

## Convention draws 1,200 Witnesses

Herald Special  
More than 1,200 area residents assembled this past weekend in Norval for Jehovah's Witnesses semi-annual Circuit convention. The two-day meeting at the Witnesses assembly hall on Highway 7 featured Bible-based discourses and demonstrations involving local residents and their families developing the theme, "Making the Truth manifest in our lives". R. Alton, district overseer for the Witnesses in southern Ontario, climaxed the convention Sunday afternoon with the lecture, "How Does the Truth Affect Your Life?". Mr. Alton stressed that Bible truth should have a positive effect on one's life.

"Application of God's Word frees us from the harmful effects of tobacco, drug abuse and a life of immorality", he said. "Our hearts and minds are disciplined by Bible truth so that we live the Bible each day." The convention concluded with further admonition from the Bible to continue

making progress in walking in the truth. Jehovah's

Witnesses plan to assemble again in the new year.

## BUSINESS DIRECTORY

### CHARTERED ACCOUNTANTS

**Goebelle Wagner MacAdam**  
37 Main Street South  
Halton Hills (Georgetown)  
877-5155  
453-5532  
8551 Mississauga Rd.  
Mississauga, Ontario  
826-6352

**FRANK J. JOHNSON**  
C.A., R.I.A.  
Chartered Accountant  
— Personal & Corporate  
Taxation Returns  
— Bookkeeping Services  
— Financial Statements  
30 Melara Dr., Suite 201  
Brampton  
793-4544  
Res: 877-3830  
Everyone needs small acct  
You are!

### SURVEYORS

**R.E. Clipsham Limited**  
Surveyors • Consulting Engineers  
16 Mountview Road South, Suite 101,  
HALTON HILLS (Georgetown) Ontario L7G 4K1  
(416) 877-3211 457-3082

## THE BEST IN ROOFING...

## LEON'S ROOFING

ALL TYPES SHINGLES  
FLATS  
NEW WORK — REPAIRS  
Also Eavestrouthing & Sheet Metal Work  
IT'S TIME TO THINK ABOUT ROOFING  
**LEON'S ROOFING**  
24 HR. EMERGENCY SERVICE  
877-4124

# Limehouse WI off to Kitchener

By Mrs. A.W. Benton  
Herald Correspondent  
877-5459  
The Limehouse W.I. met in Limehouse Memorial Hall Thursday evening. The roll call was well-received by naming a flower and repeating a verse containing the word.

The delegates appointed to attend the area convention Oct. 21 and 22 at Arthur will be Mrs. T.N. Anderson and Mrs. F.T.C. Brown, who will be expected to use their own discretion concerning the resolutions voting.

A \$7 gift will be expected from each branch for the gift table. Mrs. F.T.C. Brown gave a short report of proceedings at the 85th anniversary of the T.W.I.O. Aug. 12.

### Ashgrove

## Wrigglesworths celebrating 50th

By Mrs. JOHN BELLBODDY  
Herald Correspondent  
877-3193

Now it's September, which means summer and holidays are over.

We know you all had a good time, but everything has to end and it's back to work again. The Ex is over, school has started again, the fall fairs are coming, then it's time to prepare for winter.

Congratulations to all who have wedding anniversaries in September, with special best wishes to Clifford and Margaret Wrigglesworth, who celebrated their 50th Sept. 4.

Fifty wonderful golden years, the greatest years in life, years of trust and patience, as a loving husband and wife, growing in a marriage, and a love that time endures. No wonder they're referred to, as those Priceless Gold-

ary of the T.W.I.O. Aug. 12. A highlight of our meeting was a demonstration on making pressed flower cards by Mrs. Milton Bird, who seemed well-qualified to teach the craft. She was thanked by Mrs. Cannon, convener of the day and given a small gift.

Plans were made for members to join Norval for a bus trip to the Kitchener market today (Wednesday).

Mrs. W. Kirkwood provided a tasty lunch after we sang "There's a garden on the border of the Nation" at the close.

The First Limehouse Scouting season will get underway today (Wednesday) with registration for

all sections at 7:30 p.m. in the Limehouse Memorial Hall. Holidayers included Mr. and Mrs. Frank Hannah and sons Douglas and Michael for a week in Mexico.

Mrs. Ingram of Winnipeg visited Mrs. Foughley and Miss Brigham, her cousins. She has recently earned a university diploma, although she is advanced in years.

Early in summer Mr. and Mrs. A. Swinkles celebrated their 25th wedding anniversary. A sister from Helmond and a sister-in-law from Bakel, both in Holland, visited with them for the occasion June 5. Congratulations.

We also offer sympathy to them on the death of a

sister-in-law at Strathroy recently. Jeffrey Glynn of Regina visited his grandmother here in August and then went on to Bracebridge to visit his maternal grandparents, Mr. and Mrs.

Whalen. Last weekend, his mother, Mrs. Peter Glynn also of Regina, came east, where she visited Mrs. John Glynn, her parents, the Whalens, friends at Ottawa and others.

We are sorry to hear that Mr. I.W. Noble has been ill in hospital in Brampton, but hope that he may be well again soon. Congratulations to Mary Lou Lindsay, who was married to Tim Prudden at the R.C. Church, Acton

Sept. 4. Also congratulations to Wendy Patricia Hoekstra and Brian Lee Van Ek, whose wedding was in the Christian Reformed Church Saturday in Georgetown.

## McDonald's Colouring Contest

### WEST GERMANY

Ronald and Grimace join a German village band. More combs in your com-pan-y, Grimace!

CAPITAL: Bonn  
NEIGHBOURS: Switzerland, France, Luxembourg, Belgium, Netherlands, Denmark, East Germany, Czechoslovakia, Austria

### TAKE A TOUR OF McDONALD'S

and see what goes on behind the scenes. Great for groups of all ages. To reserve your tour, call McDonald's at 877-0221

LAST WEEK'S WINNERS

ANIT PEARCE 21 Mount St. Georgetown	MICHAEL PEER 243 Davis Blvd. Brampton	HEATHER L'EPICIER 75 Mary St. Georgetown	BECKY HENNELLE 22 St. George St. Georgetown
---	---	--	---

### Win McDonald's Gift Certificates And Watches

Submit your entry to THE HERALD

NAME: \_\_\_\_\_  
ADDRESS: \_\_\_\_\_  
TELEPHONE: \_\_\_\_\_  
AGE: \_\_\_\_\_

**Sunday, September 19th**  
**TERRY FOX RUN**  
Proceeds to Cancer Research

### LIMESTONE ALL SIZES

A & B GRAVEL  
FILL AND TOP SOIL

★  
**'BUD' HAINES**  
3 DURHAM ST.  
877-3302 877-4593

### CHATELAINE LIGHTING

RESIDENTIAL - COMMERCIAL

SEE IT ON DISPLAY NOT IN A CATALOGUE WE ARE SHOWING OVER 1000 FEATURES FULL RANGE OF TRACK LIGHTING SYSTEMS COMPLETE LINE OF INSIDE HOUSING PRODUCTS 240 YORK RD. GUELPH

519 824-0401

### DELREX Aluminum Limited

Aluminum Awnings Specializing in Eavestroughs, Siding, Canopies, Storm Doors, Windows, Scaffolding, Fascia in Living Colours

877-5383

### BUYWISE

FACTORY OUTLET Complete Line of Energy Saving WINDOWS AND DOORS — WE INSTALL — "The Place To Save!" 71 MOUNTAINVIEW RD. N. UNIT 5, GEORGETOWN

877-1186

### J.C.P.

877-1158

PLUMBING & CONTRACTING Residential Plumbing, Alterations, Additions, Rec Room Conveniences

Anywhere — Please Phone 877-1158

### B.A.M. Construction Ltd.

Home Improvements, Renovations - Alterations

- Carpentry
- Eavestrouthing
- Siding
- Roofing

FREE ESTIMATES  
794-0383  
all work guaranteed

### MEL TAYLOR ALUMINUM LIMITED

FEATURING

- Energy Efficient Replacement Windows
- Patio Doors & Full Glass Doors

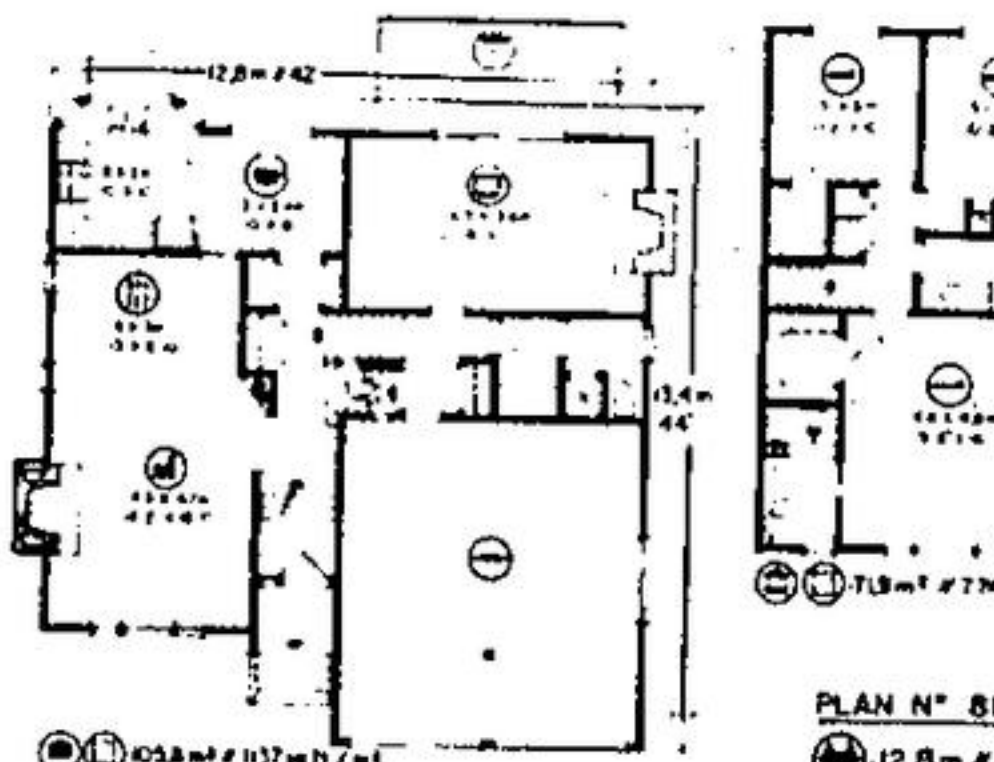
Aluminum Home Improvements  
29 YEARS EXPERIENCE  
877-6772

### JOHN CAMPBELL LANDSCAPING

- Professional Design
- Planting Trees
- Pruning
- Sodding
- Retaining Walls
- Mulching and Bedding
- Tree Pruning & Surgery
- Complete Landscaping

873-1116  
Georgetown  
451-8025 Brampton

# HOME OF THE WEEK



## SPACIOUS SPLIT LEVEL HOME DESIGN HAS ALL THE AMENITIES

Here's an impressive split level home design which is perfectly suited to the medium frontage residential building lot, and which provides almost 2,000 square feet of well-organized finished floor area on its three finished levels; with another 600 square feet of additional living accommodations or recreational area available for future development in the un-finished partial basement. The imposing exterior is finished in horizontal channel siding, with brick veneer accents and chimneys, topped with a bi-level roof which could be alternately finished in either shingles or shakes, according to individual family preference and regional material costs.

The elevated weather-recessed main entry leads into a compact reception foyer landing, from which traffic moves up two stairs to the outdoor storage area, and naturally to left into the long rectangular living-dining room combination. The living room features a raised-hearth masonry fireplace and wide, front-facing windows for excellent view and natural light. The dining area separates from the dinette via convenient pocket door, for easy access and good separation of formal and informal dining styles.

The well-planned, closed U-shape kitchen and dinette combination is a homemaker's delight. It provides generous countertop work surfaces, ample cupboard storage and an ideal work triangle configuration. The sinks and surrounding preparation counter are surrounded by a large projecting bay window, ensuring excellent natural light where it is most often required. The dinette area is sufficiently spacious to allow either a standard dinette suite or built-in banquet-style nook furnishings.

The spacious family room is positioned on the lower level, sunken seven steps from the main living level. It features a second raised-hearth masonry fireplace and a wide sliding glass walk-through window leading onto the large rear patio. This lower level also contains a large mud room facility con-

necting to the two-car garage, and a three-piece vanity bathroom with shower, which latter separates the commode and shower from the vanity area, for greater convenience.

Access to the un-finished partial basement is gained via short stairway from the mud room. Here is ample space for the future development of additional recreational facilities, plus a generous storage and utility area left over.

All three bedrooms are positioned on the upper level, accessible via half stairway from the entrance foyer and outdoor storage area. Each of the bedrooms provides generous closet storage facilities and excellent exposure for view, ventilation and natural light. The spacious master bedroom suite has a full walk-in closet and a three-piece ensuite bathroom with an elevated tub behind a space-saving pocket door.

An outstandingly practical interior layout which provides all of the conveniences and amenities which are so characteristic of the better quality modern home today.

Plans for design No. 81-1910 may be purchased either by the single set, at a cost of \$130.00 for the first set and \$25.00 for each additional set, or by the package. A five-set plan package, including the first set, is economically priced at \$185.00 and an eight-set package, also including the first, is only \$225.00. Whichever method you choose, please include \$9.00 for postage and handling. Ontario residents please add 7% sales tax.

Send for the current edition of Select Homes magazine, series 54, featuring imaginative decorating and home improvement ideas, plus 130 quality home plans of every type. Available for \$3.25 (\$2.00 plus \$1.25 postage and handling).

To order any of these items please send cheque or money order, payable to the Home of the Week. Address to: Home of the Week, c/o The Halton Hills Herald, Unit 1, 151 Cartingview Drive, Rexdale, Ontario, M9W 5E7.

### B. PICARD

ALCAN  
• Aluminum Siding  
• Home Improvements  
• Soffit/Fascia/Roofing  
• 5" Seamless Eavestroughs  
• Windows & Doors

FREE ESTIMATES  
877-8247

### E.S.L. CARPENTRY

Specializing in HOME RENOVATIONS Experts in Kitchen & Rec Rooms Reasonable Prices

878-5104

### JACK'S HOME SERVICES

Complete Home Renovations

- Small Home Repairs
- Storm Windows
- Custom Built Kitchens

873-1311  
(Georgetown)

### CUSTOM PROFESSIONAL CARPENTRY

C.P.C. CARPENTRY  
1600 10th St. E. #34

- All phases of carpentry
- Solar Additions
- Custom Homes
- Additions & Renovations
- NO JOB TOO SMALL!

Free advice & estimate  
877-5655

### AQUAFINE

WATER REFINERS  
WATER SOFTENERS AND WATER TREATMENT EQUIPMENT

LOW MONTHLY RENTALS FREE WATER TESTING & SERVICE

348 Guelph St. 877-6242

★ SALES ★ SERVICE ★ REPAIRS

### WATER PUMPS

We are equipped to handle SUBMERSIBLE PUMPS and we are also class #1 your job phone

**BOYES PLUMBING**  
855-4232

### LEON'S ROOFING

All types Shingles, Flat New work - Repairs

ALSO EAVESTROUGHING & SHEET METAL WORK  
24 HR. EMERGENCY SERVICE  
877-4124

### TOPLINE

Painting & Minor Home Repairs

FREE ESTIMATES  
877-2868  
877-5940