

**Halton Hills churches, part 14**

# Congregation unions shaped St. John's past

By AN PEDERIAN  
Herald Staff Writer

Just as magicians can pull interesting things out of hats and then pop them back in to pull out something new, St. John's United Church on Georgetown's Guelph Street has undergone many changes in name and form before becoming what it is today.

With roots planted in several rural congregations in the area, stretching back to 1821 and George Kennedy, the man who gave his name to the community, St. John's can claim much of the local early history of Christianity as its own.

In 1821, when there were still no churches, religious gatherings centered around the visits of circuit riders or saddlebag preachers. Travelling from village to village, the preachers covered large distances on horseback to bring the word of God. Their visits brought neighbors together to hear

their sermons and fostered the growth of congregations.

Although the United Church of Canada was not born until 1925 when Presbyterian and Methodist congregations joined forces, its member congregations claim a long history in Georgetown for the current church.

The first church building in Georgetown was erected by the Wesleyan Methodist group in 1841, where the present Oddfellows Hall stands. The frame was later sold and now stands on James Street, where it's used for storage by McKenzie Lumber.

Five years later, another church was built on the present St. John's location, by the Methodist Episcopal congregation.

The two Methodist congregations continued independently until the first of many unions in the history of the United Church occurred.

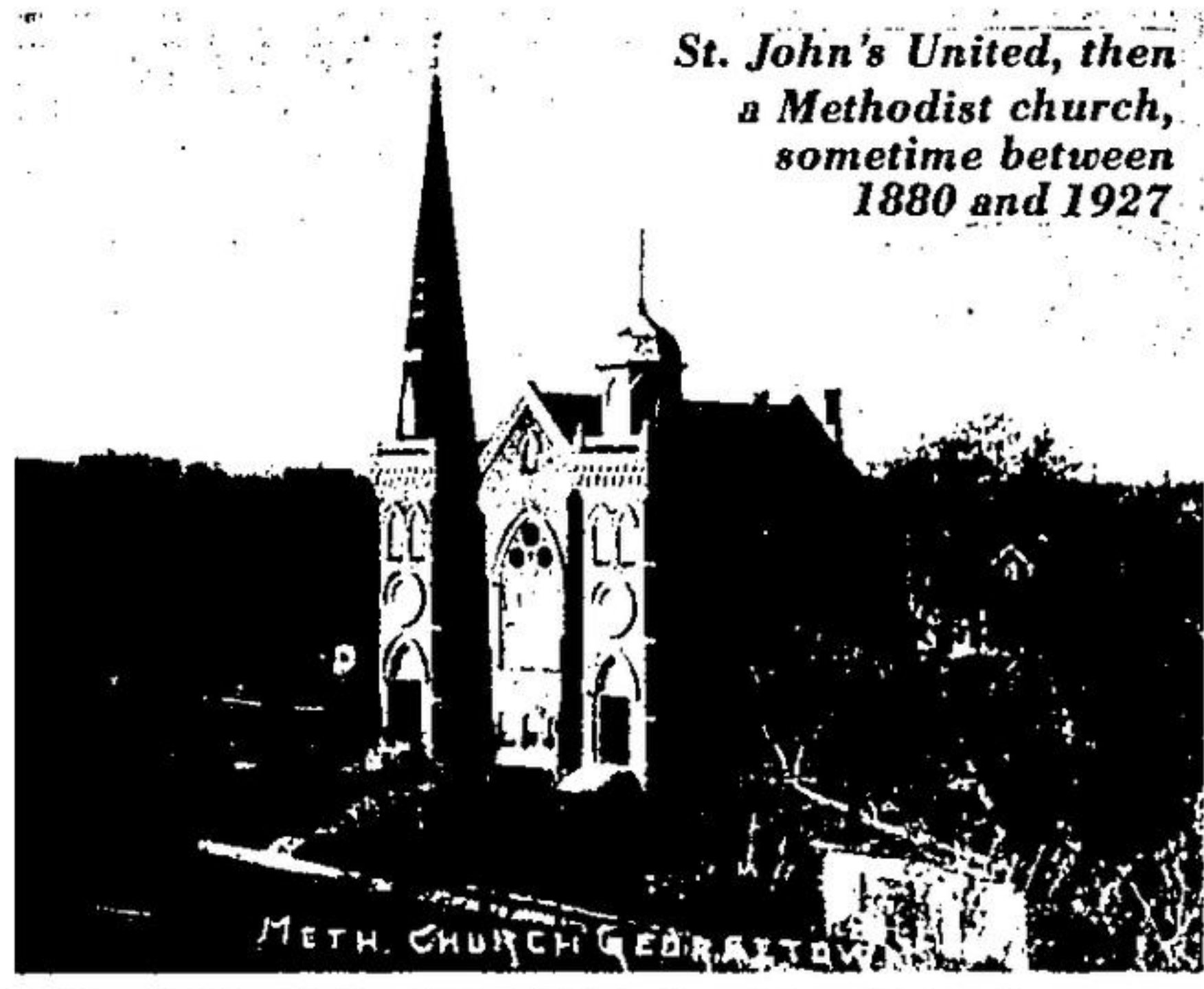
In 1884, following the trend

of other Methodist groups, the Wesleyan and Episcopal congregations joined to form the Methodist Church in Canada, using the Episcopalian church (present-day St. John's) building.

Another union followed in 1910 when the Georgetown Congregational Church joined with the Methodist Church in Canada. They dedicated their gothic, spired structure at Market and Church Streets to the town for use as a library after 32 years of use, and moved into the St. John's location with the Methodists.

The last dip into the magician's hat came about in 1925 when the Presbyterian Church joined the Guelph Street congregation. However, not all Presbyterians took part in the move. About half of the local Presbyterian congregation rejected union and elected to remain as Knox Presbyterian Church on the corner of Main

Continued on page C5



St. John's United, then a Methodist church, sometime between 1880 and 1927

## HOLIDAY GIFT GUIDE

We Make Christmas Shopping Easier

*Laura Secord*

Beautifully Boxed  
**CHOCOLATES**

You'll be proud to give them —  
Pleased to receive them!

*Elizabeth Arden*

**GIFT SETS**

Colognes — Perfumes

Pamper all the ladies on your list this Christmas

Available at:

**YOUNG'S**  
PHARMACY LTD.

DOWNTOWN  
GEORGETOWN  
**877-2761**

## CHURCH DIRECTORY

This Weekend attend the Church of your Choice

**ST. GEORGE'S ANGLICAN CHURCH**  
60 Guelph St.  
877-8044  
RECTOR Rev. Jim Boyle

8:00 a.m. Holy Eucharist (Prayerbook)  
9:00 a.m. Holy Eucharist (New Rite) Junior Church (Nursery Facilities)  
11:00 a.m. Holy Eucharist

**HOLY CROSS ROMAN CATHOLIC CHURCH**  
224 Maple Ave. Georgetown  
PASTOR Father Dave Ceb  
ASST. PASTOR Father Murray Krotzsch

MASSSES Sat. - 7 p.m.  
Sun. - 8 a.m., 10, 12  
For information call: 877-5862

**GEORGETOWN ALLIANCE CHURCH**  
14 Main St. S. Georgetown  
PASTOR Rev. Peter Ralph, B.A., M.Div.

11:00 a.m. Morning Service  
9:45 a.m. Sunday School  
6:30 p.m. Evening Service  
7:00 p.m. Wednesday Prayer Meeting

CHRISTMAS EVENTS  
Sun. Dec. 6, 8:15 p.m. Music from the visiting choir of Maple Ave. Baptist Church.  
Sun. Dec. 13, 8:30 p.m. "Carol of Christmas" by our own church choir  
Sun. Dec. 20, 8:45 p.m. Christmas Program  
Thurs. Dec. 24, 7:30 p.m. Christmas Eve Candlelight Service with Special Music and Message.  
CALL: 877-4810 877-3923

**MAPLE AVENUE BAPTIST CHURCH**  
PASTOR Edwin H. Mitchell 877-8065 — 877-0320

EVERY SUNDAY Family Bible School 9:45 a.m.  
Biblical Preaching - Good Music 11:00 a.m. & 8:30 p.m.  
Supervised Nursery

WEEKLY Bible Study & Prayer Ladies Coffee Hour Youth Time & Recreation Boys & Girls Clubs

MONTHLY Jolly Seniors Missionary Meeting  
Visitors Always Welcome!

**IMMANUEL LUTHERAN CHURCH**  
WINDSOR ROAD AT CAROLE STREET  
PASTOR REV. DR. J.M. DRICKAMER

Sunday School 9:45 a.m.  
CHURCH SERVICE 11:00 a.m.  
Church of the Lutheran Hour

REGULAR OR DIET  
**Pepsi-Cola**  
750 ml. BTL. **.33**  
PLUS .30 DEPOSIT PER BTL.

CHICKEN NOODLE, CHICKEN NOODLE-O'S, OR CREAM OF CHICKEN  
**Campbell's Chicken Soups**  
10-FL. OZ. TIN **.33**

ASSORTED FLAVORS  
**Jell-O Jelly Powders**  
3-OZ. PKG. **.33**

P.F. ASSORTED, BOURBON CREMES, GARDEN CREMES, ASSORTED CREMES OR FRUIT CREMES  
**Peek Frean Biscuits**  
200 g. PKG. **.79**

# Competitive Prices at IGA

- WEEKLY SPECIALS
- FRIENDLY PERSONAL SERVICE
- NO CHARGE FOR BAGS TO CARRY HOME YOUR SHOPPING

FROZEN, CHICKEN, BEEF, TURKEY, OR BEEF & KIDNEY  
**Savarin Pot Pies**  
3-OZ. PKG. **.59**

KRAFT, PROCESS CHEESE FOOD SINGLES (18 SLICES)  
**Cheese Slices**  
500 g. PKG. **2.29**

FRESH! 3 LB. AVERAGE RIB PORTION  
**Pork Loin Roasts**  
LB. **1.09**

SLICED  
**Side Bacon**  
500 g. PKG. **1.49**  
LIMIT 2 PKGS. PER FAMILY

COOKED PICNIC  
**Smoked Pork Shoulders**  
LB. **1.29**

PURITAN,  
**Flakes Of Ham**  
184 g. TIN **.99**

INSTANT COFFEE  
**Nescafé**  
10-OZ. JAR **4.99**

TURKEY PRICES Effective Until January 5, 1982  
FROZEN, ALL SIZES, CANADA  
**Grade "A" Turkeys**  
1.08 LB.  
CANADA GRADE "A" FROZEN, ALL SIZES, TABLETTE  
**Self-Basted Turkeys**  
1.18 LB.

FRESH! 7 CHOP ECONOMY PACK, (3 RIB, 3 CENTRE, 1 TENDERLOIN PORTION)  
**Loin Pork Chops**  
LB. **1.39**

Wieners  
1.49  
FRESH! 3 LB. AVERAGE TENDERLOIN PORTION  
**Pork Loin Roasts**  
1.19 LB.

GRANNY PKG. OF 10 Butter Tarts <b>1.29</b>	MARSHCO Shreddles 500 g. BOX <b>.99</b>	SELECTED POPULAR VARIETIES Sandwich Meats 175 g. PKG. <b>.99</b>	SCHNEIDER'S COOKED, BAKED, BONELESS, ALL SIZES, TABLETTE Ham Nuggets LB. <b>3.99</b>	COOKED HAM 175 g. PKG. <b>1.19</b>	SLICED, SCHNEIDER'S COOKED, BAKED, BONELESS, 3 LB. AVERAGE Old Fashioned Hams LB. <b>3.99</b>	1 1/2 LB. AVERAGE SELECTED SPECIALTY VARIETIES Sandwich Meat Chunks LB. <b>2.29</b>	SLICED, Bologna 500 g. PKG. <b>1.59</b>
MITCHELL'S, FANCY Apple Sauce 1 1/2 FL. OZ. TIN <b>.59</b>	CONFIDETS Botless Maxi Pads 150 ML. PKG. OF 12 <b>1.29</b>	CONFIDETS Botless Maxi Pads 150 ML. PKG. OF 12 <b>1.29</b>	CONFIDETS Botless Maxi Pads 150 ML. PKG. OF 12 <b>1.29</b>	CONFIDETS Botless Maxi Pads 150 ML. PKG. OF 12 <b>1.29</b>	CONFIDETS Botless Maxi Pads 150 ML. PKG. OF 12 <b>1.29</b>	CONFIDETS Botless Maxi Pads 150 ML. PKG. OF 12 <b>1.29</b>	CONFIDETS Botless Maxi Pads 150 ML. PKG. OF 12 <b>1.29</b>
CHOICE PEAS 1 1/2 FL. OZ. TIN <b>.49</b>	CONFIDETS Botless Maxi Pads 150 ML. PKG. OF 12 <b>1.29</b>	CONFIDETS Botless Maxi Pads 150 ML. PKG. OF 12 <b>1.29</b>	CONFIDETS Botless Maxi Pads 150 ML. PKG. OF 12 <b>1.29</b>	CONFIDETS Botless Maxi Pads 150 ML. PKG. OF 12 <b>1.29</b>	CONFIDETS Botless Maxi Pads 150 ML. PKG. OF 12 <b>1.29</b>	CONFIDETS Botless Maxi Pads 150 ML. PKG. OF 12 <b>1.29</b>	CONFIDETS Botless Maxi Pads 150 ML. PKG. OF 12 <b>1.29</b>
NON-VEGETABLE OIL, TOMATO SAUCE OR HOT SAUCE Boni Sardines 2 1/2 OZ. TIN <b>.99</b>	CONFIDETS Botless Maxi Pads 150 ML. PKG. OF 12 <b>1.29</b>	CONFIDETS Botless Maxi Pads 150 ML. PKG. OF 12 <b>1.29</b>	CONFIDETS Botless Maxi Pads 150 ML. PKG. OF 12 <b>1.29</b>	CONFIDETS Botless Maxi Pads 150 ML. PKG. OF 12 <b>1.29</b>	CONFIDETS Botless Maxi Pads 150 ML. PKG. OF 12 <b>1.29</b>	CONFIDETS Botless Maxi Pads 150 ML. PKG. OF 12 <b>1.29</b>	CONFIDETS Botless Maxi Pads 150 ML. PKG. OF 12 <b>1.29</b>
ASSORTED VARIETIES Kal Kan Cat Food 3 1/2 OZ. TIN <b>.89</b>	CONFIDETS Botless Maxi Pads 150 ML. PKG. OF 12 <b>1.29</b>	CONFIDETS Botless Maxi Pads 150 ML. PKG. OF 12 <b>1.29</b>	CONFIDETS Botless Maxi Pads 150 ML. PKG. OF 12 <b>1.29</b>	CONFIDETS Botless Maxi Pads 150 ML. PKG. OF 12 <b>1.29</b>	CONFIDETS Botless Maxi Pads 150 ML. PKG. OF 12 <b>1.29</b>	CONFIDETS Botless Maxi Pads 150 ML. PKG. OF 12 <b>1.29</b>	CONFIDETS Botless Maxi Pads 150 ML. PKG. OF 12 <b>1.29</b>
CANNONIA Coffee Mate 500 g. JAR <b>1.99</b>	CONFIDETS Botless Maxi Pads 150 ML. PKG. OF 12 <b>1.29</b>	CONFIDETS Botless Maxi Pads 150 ML. PKG. OF 12 <b>1.29</b>	CONFIDETS Botless Maxi Pads 150 ML. PKG. OF 12 <b>1.29</b>	CONFIDETS Botless Maxi Pads 150 ML. PKG. OF 12 <b>1.29</b>	CONFIDETS Botless Maxi Pads 150 ML. PKG. OF 12 <b>1.29</b>	CONFIDETS Botless Maxi Pads 150 ML. PKG. OF 12 <b>1.29</b>	CONFIDETS Botless Maxi Pads 150 ML. PKG. OF 12 <b>1.29</b>
PARTLY BAKED, EVAPORATED Carnation 2% Milk 353 ML. TIN <b>.54</b>	CONFIDETS Botless Maxi Pads 150 ML. PKG. OF 12 <b>1.29</b>	CONFIDETS Botless Maxi Pads 150 ML. PKG. OF 12 <b>1.29</b>	CONFIDETS Botless Maxi Pads 150 ML. PKG. OF 12 <b>1.29</b>	CONFIDETS Botless Maxi Pads 150 ML. PKG. OF 12 <b>1.29</b>	CONFIDETS Botless Maxi Pads 150 ML. PKG. OF 12 <b>1.29</b>	CONFIDETS Botless Maxi Pads 150 ML. PKG. OF 12 <b>1.29</b>	CONFIDETS Botless Maxi Pads 150 ML. PKG. OF 12 <b>1.29</b>
BT LAWRENCE Corn Oil 1 L. BTL. <b>1.69</b>	CONFIDETS Botless Maxi Pads 150 ML. PKG. OF 12 <b>1.29</b>	CONFIDETS Botless Maxi Pads 150 ML. PKG. OF 12 <b>1.29</b>	CONFIDETS Botless Maxi Pads 150 ML. PKG. OF 12 <b>1.29</b>	CONFIDETS Botless Maxi Pads 150 ML. PKG. OF 12 <b>1.29</b>	CONFIDETS Botless Maxi Pads 150 ML. PKG. OF 12 <b>1.29</b>	CONFIDETS Botless Maxi Pads 150 ML. PKG. OF 12 <b>1.29</b>	CONFIDETS Botless Maxi Pads 150 ML. PKG. OF 12 <b>1.29</b>
ZOOFLEX, AUSTRALIAN, SEEDED Lexie Raisins 275 g. CELL. PKG. <b>1.09</b>	CONFIDETS Botless Maxi Pads 150 ML. PKG. OF 12 <b>1.29</b>	CONFIDETS Botless Maxi Pads 150 ML. PKG. OF 12 <b>1.29</b>	CONFIDETS Botless Maxi Pads 150 ML. PKG. OF 12 <b>1.29</b>	CONFIDETS Botless Maxi Pads 150 ML. PKG. OF 12 <b>1.29</b>	CONFIDETS Botless Maxi Pads 150 ML. PKG. OF 12 <b>1.29</b>	CONFIDETS Botless Maxi Pads 150 ML. PKG. OF 12 <b>1.29</b>	CONFIDETS Botless Maxi Pads 150 ML. PKG. OF 12 <b>1.29</b>
ASSORTED COLOURS White Swan Bathroom Tissue 4 ROLL PKG. <b>1.29</b>	CONFIDETS Botless Maxi Pads 150 ML. PKG. OF 12 <b>1.29</b>	CONFIDETS Botless Maxi Pads 150 ML. PKG. OF 12 <b>1.29</b>	CONFIDETS Botless Maxi Pads 150 ML. PKG. OF 12 <b>1.29</b>	CONFIDETS Botless Maxi Pads 150 ML. PKG. OF 12 <b>1.29</b>	CONFIDETS Botless Maxi Pads 150 ML. PKG. OF 12 <b>1.29</b>	CONFIDETS Botless Maxi Pads 150 ML. PKG. OF 12 <b>1.29</b>	CONFIDETS Botless Maxi Pads 150 ML. PKG. OF 12 <b>1.29</b>
WELSON, JERSEY MILK, CREAMY CUNCIH, MR. BIG, MILDLY SWEET OR SWEET FLAVOUR Candy Bars PKG. OF 4 REG. SIZE BARS <b>1.25</b>	CONFIDETS Botless Maxi Pads 150 ML. PKG. OF 12 <b>1.29</b>	CONFIDETS Botless Maxi Pads 150 ML. PKG. OF 12 <b>1.29</b>	CONFIDETS Botless Maxi Pads 150 ML. PKG. OF 12 <b>1.29</b>	CONFIDETS Botless Maxi Pads 150 ML. PKG. OF 12 <b>1.29</b>	CONFIDETS Botless Maxi Pads 150 ML. PKG. OF 12 <b>1.29</b>	CONFIDETS Botless Maxi Pads 150 ML. PKG. OF 12 <b>1.29</b>	CONFIDETS Botless Maxi Pads 150 ML. PKG. OF 12 <b>1.29</b>

**Everyday Low Price**

**Heinz Ketchup**  
32-FL. OZ. JUG **1.78**

**Stone Ground or Country Bran Bread**  
800 g. LOAF **.79**

**Everyday Low Price**

**White Sugar**  
2 kg. BAG **1.39**

**Everyday Low Price**

**Margarine**  
1-LB. PARCH. PKG. **.43**

**PRODUCT OF CENTRAL AMERICA**  
DOLE, CHIQUITA OR DEL MONTE  
**Bananas** LB. **.25**

**PRODUCT OF U.S.A. CANADA NO. 1 GRADE Brussels Sprouts** LB. **.59**

**PRODUCT OF U.S.A. Florida Tangelos** DOZ. **1.29**

Property Owners and Tenants

## Your 1981 Assessment Notice

### Mailing of Assessment Notices

A 1981 Assessment Notice for 1982 property taxes will be mailed on or before December 1st to every property owner and tenant in the following municipalities:

**Regional Municipality of Halton-Peel including the City of Burlington; and the Towns of Halton Hills, Milton, Oakville; Cities of Brampton, Mississauga; and the Town of Caledon.**

An Information Insert mailed with your Assessment Notice explains the appeal procedure and provides the timetable for Open Houses in your area.

### Open House Sessions will Answer Questions

Open House sessions have been planned at convenient times and locations in your municipality to afford you the opportunity to review your assessment with staff of the Regional Assessment Office.

Assessment staff will be pleased to explain the basis of your property assessment and are authorized to amend all data (school support, assessment, etc.) on your Notice.

You are encouraged to take advantage of this service.

### New School Support Procedures

Beginning this year, your school support designation will appear on your Assessment Notice. This designation indicates whether the education portion of your property taxes will be directed to support public or separate schools.

If you wish to review your school support designation, contact your Regional Assessment Office or attend an Open House in your area.

### Rolls Available For Review

The Assessment Roll will be available for review at your local Municipal Office during regular business hours beginning December 22, 1981.

### If you wish to Appeal

If you believe you have been improperly assessed in any way you may file a formal complaint with the Assessment Review Court. The final date for filing an appeal is January 12, 1982.

Information on appeal procedures is provided on the back of your Assessment Notice and Information Insert.

Ministry of Revenue  
Ontario

R.H. Beach, MIRA  
Assessment Commissioner  
Halton-Peel Regional Assessment Office  
55 City Centre Drive  
Mississauga, Ontario  
Telephone: 270-8050  
Zenith no. 86730

**HALTON HILLS I.G.A. 160 Guelph St., Georgetown**