



Ken McNabb, co-owner with his brother John of Callumlea Guernseys in RR2 Georgetown, holds the farm's Junior Champion Female, one of three first places the McNabbs claimed at the Royal Agricultural Winter Fair in Toronto last week. Callumlea also claimed top honors for senior heifer, intermediate heifer and junior herd.

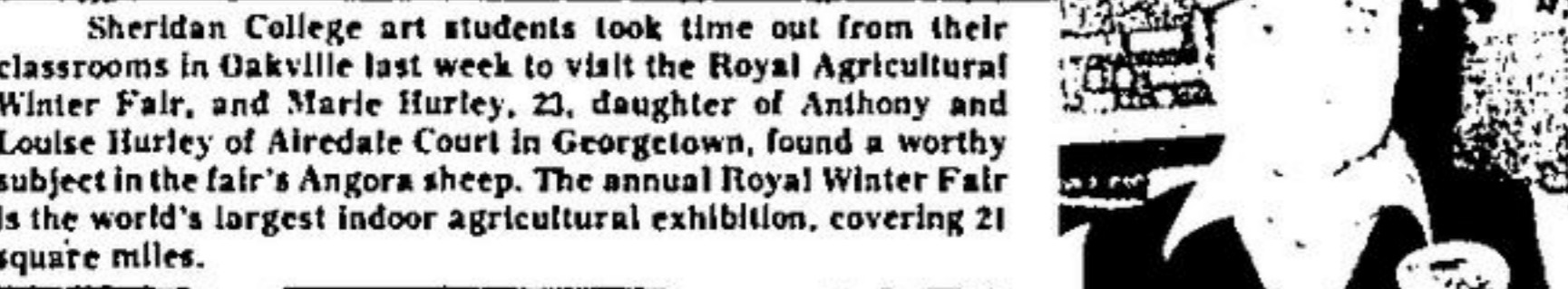
## HALTON HILLS AT THE ROYAL



Sheila Klooster, formerly of Georgetown and now living in Guelph, distributes some literature to Hertram Stewart of Hornby at the Royal Agriculture Winter Fair. Mr. Stewart, competing in the Holstein division at the fair, decided he would visit the Semex of Canada booth before showtime Tuesday. Semex Canada is the Canadian representative of semen sales worldwide.



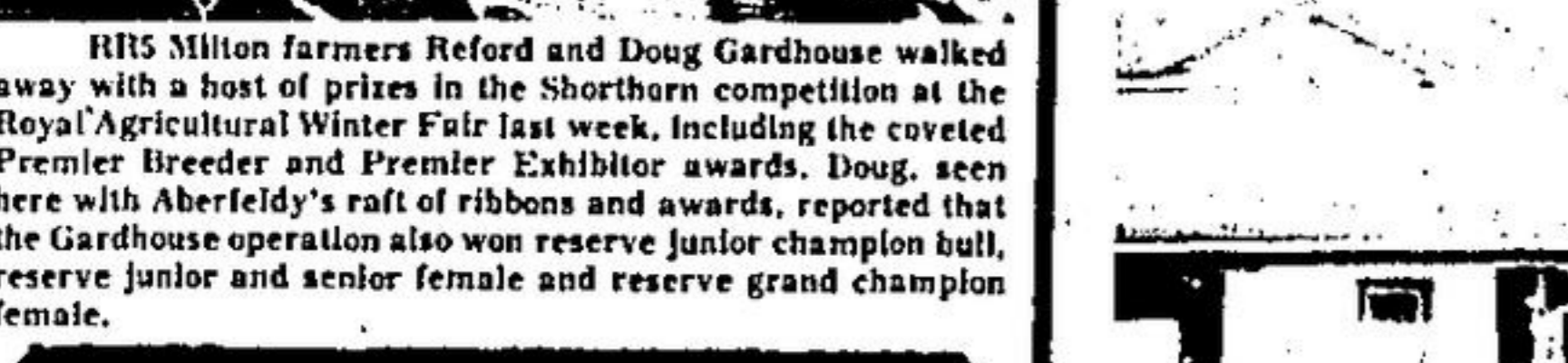
Sheridan College art students took time out from their classrooms in Oakville last week to visit the Royal Agricultural Winter Fair, and Marie Hurley, 23, daughter of Anthony and Louise Hurley of Alredale Court in Georgetown, found a worthy subject in the fair's Angora sheep. The annual Royal Winter Fair is the world's largest indoor agricultural exhibition, covering 21 square miles.



**ABERFELDY FARM SHORTHORNS**  
REFORD W. GARDHOUSE  
MILTON ONTARIO



RR5 Milton Farmers Reford and Doug Gardhouse walked away with a host of prizes in the Shorthorn competition at the Royal Agricultural Winter Fair last week. Including the coveted Premier Breeder and Premier Exhibitor awards, Doug, seen here with Aberfeldy's raft of ribbons and awards, reported that the Gardhouse operation also won reserve junior champion bull, reserve junior and senior female and reserve grand champion female.



RR5 Milton Farmers Reford and Doug Gardhouse walked away with a host of prizes in the Shorthorn competition at the Royal Agricultural Winter Fair last week. Including the coveted Premier Breeder and Premier Exhibitor awards, Doug, seen here with Aberfeldy's raft of ribbons and awards, reported that the Gardhouse operation also won reserve junior champion bull, reserve junior and senior female and reserve grand champion female.

### BUSINESS DIRECTORY

<b>OPTOMETRISTS</b> Dr. R.R. Hamilton AND Dr. D.C. Patterson OPTOMETRISTS Carrel Professional Building 16 Mountainview Road S. Georgetown, Ont. L7G 3G2 TELEPHONE 877-3971	<b>CHARTERED ACCOUNTANTS</b> Goebelle Wagner MacAdam 37 Main Street South Halton Hills (Georgetown) Ontario L7G 3G2 877-5155 453-5532 Everyone reads small ads! You are! THE HERALD Home Publishing of Halton Hills 877-2201
<b>CHIROPRACTORS</b> G.W. Corbett, D.C. CHIROPRACTOR 70 Mill Street, Georgetown For Appointment PHONE: 877-6631	<b>SURVEYORS</b> R.E. Clipsham Limited Surveyors • Consulting Engineers 16 Mountainview Road South, Suite 101, HALTON HILLS (Georgetown) Ontario L7G 4K1 (416) 877-2211 457-2002

### Century 21 Crown City Realty Ltd.

519-836-4500

Immaculate Semi in Acton — \$39,900 	1 1/2 storey — full basement — Gorgeous lot in Acton \$51,900 
Rockwood — spacious lot is 165' deep — \$65,900 	Distress Sale — \$41,900 in Rockwood 

ON ANY OF THE ABOVE PLEASE CALL KAY MAXWELL (519)836-4500 or 853-0508.

Herald Toronto bureau photos

## Valcor pays \$58,000 for two heifers

Georgetown cattle breeder Valcor Export Ltd. paid \$32,000 for a year-old heifer last week at the annual Meadlake Sale held in Guelph's Brubacher Sale Arena. Consigned by E. Gordon Atkinson of Barrie, Meadlake Snow Babe-et is the offspring of two "excellent" Holsteins, sire Paclamar Bootmaker and dam Romandale Telstar Branda.

Valcor also paid \$26,000 for a year and a half-old bred Heifer consigned by Quebec breeder Ross Carson. Purchased for export to Italy, Mibelson Ned Betty Ana-et was declared junior champion at the Royal Agricultural Winter Fair in Toronto last week. She was sired by Agro Acres Marquis Ned and dam Aylmer Christopher Betty Ana. At the Fair's Royal Holstein Show last week, Cormdale Farms Incorporated, also of Georgetown, showed a Willowrag Kate Mar Kara, bred by Carl Miller of Ohio and chosen the best of 18 three-year olds in the show. Another Georgetown breeder, Claude Pickett, entered Pickland Fury Echo to claim top honors among nine Dry Four and Five-year olds.

Scotsdale Farms of RR1 Georgetown won two firsts and reserve grand champion bull in Shorthorn competition at the Royal Winter Fair last week. Here, farm manager Emerson Clarke shows the animal that won the reserve prize. Scotsdale also won a first in breeder's herd and group of two bulls.

## Five local 4-Hers in Queen's Guineas

There were five competitors from Halton Hills in the 35th annual Queen's Guineas steer competition at the Royal Agricultural Winter Fair Friday, and two of them were in the first-prize group of their class.

Bev Wingfield competed in the Aberdeen Angus class and finished in the first-prize group with her steer. The animals were judged and placed in categories, so that first, second and third prize winners were chosen from among the steer in the first-prize group.

Participating in the 4-H sponsored event for her sixth year, Bev said she and her brother Brian have a hobby farm. She works with Halton regional police in Georgetown as a cadet.

Lori Parsons and Doug Donaldson, both of Georgetown, also competed in the Aberdeen Angus class and ended up in the second prize group.

Doug is currently working on a farm in Georgetown and plans to have his own farm in the future.

"We have to have a calf picked by May," he said of the preparation for the fair. "I look for a calf with large boning and a good covering of fat over the ribs and all over."

Brian Wingfield came in the second prize group with his Hereford steer, and Stephen Lasby from Rockwood was in the first prize group with his Simmental Cross calf.

The Queen's Guineas is the culmination of months of preparation for 4-H members. Following the judging, there was a sale and auction of the steer.

"Right now our calves are likely being chopped up," said Bev of the five Halton Hills steer judged and sold Friday.

### FOR HOMES, THERE'S NO PLACE LIKE THE PERMANENT

MEMBER OF THE TORONTO & BRAMPTON REAL ESTATE BOARDS

#### WALK TO GO STATION FROM ANY ONE OF THESE 3 HOMES

VENDOR TRANSFERRED WILL SACRIFICE THE BEST NEWLY RENOVATED OLDER HOME AND HELP WITH THE FINANCING AT 12 PERCENT — IN SUPERB CONDITION. MUST BE SEEN.	WANT A NEWER HOME? BUT MUST BE ON A LARGE LOT AND HAVE A LOW INTEREST MORTGAGE — HOW'S 169' DEEP AND 11 PERCENT TILL APRIL 84 — ASKING ONLY \$74,500 FOR THIS 2 1/2 YEAR OLD 4 BEDROOM WALKOUT, BASEMENT BRICK & ALUMINUM MAINTENANCE FREE HOME.	CAN'T TAKE THE BURDEN OF A MORTGAGE ALONE? SEE THIS BRICK 3 FAMILY DWELLING ON EXTRA LARGE LOT AND SUPER LARGE DOUBLE GARAGE. ASKING IN LOW 90'S FOR ALL THAT A REAL BARGAIN — SEE IT TODAY.
--	--	--

#### IS ACTON FOR YOU

IF SO — YOU'LL SAVE THOUSANDS OF DOLLARS BECAUSE \$44,900.00

WILL OFFER YOU 3 BEDROOM BRICK GARAGE — LARGE LOT, MATURE TREES AND A PROFESSIONALLY FINISHED BASEMENT AS WELL AS 2 YEARS OF LOW INTEREST MORTGAGE — A LOW DOWN PAYMENT MIGHT EVEN QUALIFY YOU — INTERESTED CALL ME THIS MINUTE. RUDY CADIEUX 877-8244 OR 792-8111.

WHERE ELSE CAN YOU FIND BETTER VENDOR WILL HOLD A LARGE FIRST MORTGAGE AT REASONABLE RATE FOR 3 YEARS — THAN WILL GUARANTEE YOU 17 PERCENT FOR BALANCE OF TERM ON THIS LOVELY 3 BEDROOM BRICK BUNGALOW WALKING DISTANCE TO SCHOOLS & GEORGETOWN PLAZAS.

BETWEEN 1/2 ACRE TO 1/4 ACRE SCENIC LOT AND A GORGEOUS BRICK BUNGALOW ALL FOR A LOW ASKING PRICE OF \$89,000 AND A SUPER LARGE 13 PERCENT MORTGAGE TILL DECEMBER 1984. MINUTES FROM GO STATION.

FOR ANYONE OF THESE CALL RUDY CADIEUX 877-8244 OR 792-8111.

IS YOUR HOME ON CPT TV? TWO LOCATIONS TO SERVE YOU BETTER. 44 PEEL CENTRE DRIVE, BRAMBLEA CITY CENTRE AND THE KIOSK AT SHOPPERS WORLD PLAZA, BRAMPTON.

### CANADA PERMANENT TRUST CO. LTD.

### James Pruffer Custom Carpentry

Specializing in:

- Additions & Porch Decks
- Siding Doors
- Decks, Stairways
- Custom Cabinets

For Quality, Design and Workmanship  
877-5961

### MATT'S ALUMINUM

SERVING HALTON & PEEL REGIONS

- ALUMINUM SIDING, SOFFITS & FASCIA
- 5" 2" ANGLE IRON STRONGS
- SPLITTING, STORM DOORS AND WINDOWS
- CHOICE OF COLOURS

FREE ESTIMATION & REPAIR SERVICES. ASK ABOUT OUR GUARANTEED WORKMANSHIP.  
877-4747

### AQUAPINE WATER REFINERS

WATER SOFTENERS AND WATER TREATMENT EQUIPMENT

LOW MONTHLY RENTALS FREE SERVICE FREE INSTALLATION  
348 Guelph St. 877-6242

### BUY WISE WINDOWS AND DOORS

FACTORY OUTLET Complete Line of Energy Saving WINDOWS AND DOORS — WE INSTALL — "The Place To Buy"

71 MOUNTAINVIEW RD. N. UNIT 5, GEORGETOWN PHONE: 877-1186

### E. A. Mitchell LIMITED

REALTORS • APPRAISERS • MORTGAGES  
PHONE 451-6232  
44 Queen St. E., Brampton

### tw TUMBU LUMBERWORKS INC.

SAVE MONEY — SAVE ENERGY PRODUCTION & CUSTOM MADE WOODEN AND VINYL CLAD

- WINDOWS
- ENTRANCE UNITS
- SLIDING DOORS
- INSULATED WINDOWS (once as good)

79 MOUNTAINVIEW RD. N. 877-9332 453-1388

## A Home Of Your Own

Here's an attractive bungalow home design which is ideally suited to the narrow-to-medium frontage residential building lot, and which provides in excess of 1,200 square feet of finished floor area in an arrangement which makes optimum use of all available space. A full basement provides abundant area for the future development of additional accommodations and/or recreational facilities. The eye-catching exterior is finished in mixed horizontal and vertical channel siding, with brick veneer and chimney, and a heavy shake roof. For those who prefer, the roof could be alternately finished in more conventional shingles.

The weather-protected main entry leads into a compact reception foyer and outerwear storage area, from whence traffic moves naturally into the long rectangular combination living/dining room. The living room features a raised-hearth masonry fireplace and a projecting box-bay window. The dining area separates from the kitchen-dinette combination via convenient pocket door, for easy separation of relaxed family meals and more formal dining when entertaining.

The well-planned L-shape kitchen-dinette combination provides generous counter-top work surfaces, abundant cupboard storage and a step-saving work triangle. The dinette area provides ample space for the installation of a full dining suite, yet also lends itself to the built-in banquette-style nook furnishings which are becoming popular once again. The kitchen-dinette area may be completely isolated via convenient pocket doors, for privacy and hygiene.

A compact mud room facility is sunken two risers from the kitchen-dinette. The stairway to the basement is also accessible from this rear foyer area.

All three bedrooms are positioned to the right of the floor plan and well away from the main living area for freedom from disturbance. Each has good exposure for view and natural light, yet privacy from adjacent homes is preserved. The large master bedroom has a full walk-in closet and a three-piece ensuite bathroom with shower.

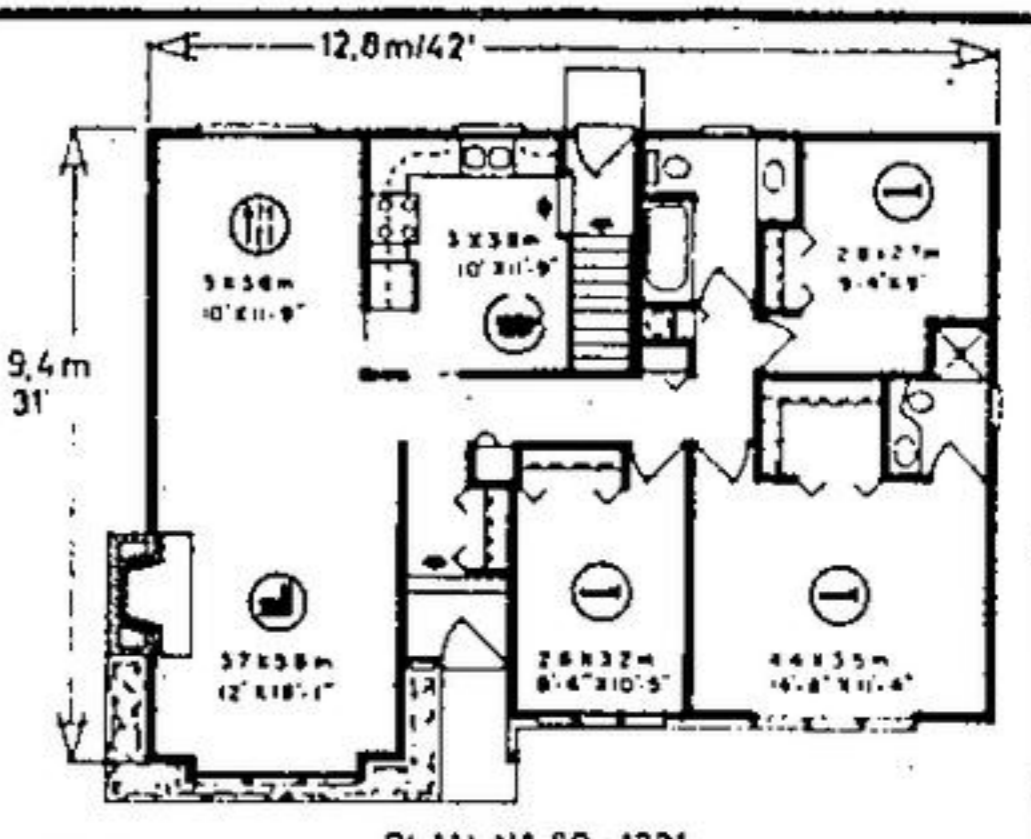
This is an eye-catching home design which provides abundant space and all modern convenience features for the growing family.

Plans for design No. 80-1231 may be purchased either by the single set, at a cost of \$125.00 for the first set and \$25.00 for each additional set, or by the package. A live-set plan package, including the first set, is economically priced at \$180.00 and an eight-set package, also including the first set, is only \$220.00.

Whichever method you choose, please include \$5.00 for postage and handling.

Send for the current edition of Select Home Designs magazine, series 50, featuring imaginative decorating and home improvement ideas, plus 250 quality home plans of every type. Available for \$2.75 (\$2.00 plus .75¢ postage and handling).

To order any of these items please send cheque or money order, payable to the Home of the Week, c/o The Halton Hills Herald, Unit 1, 151 Carlingview Drive, Roxdale, Ontario, M9W 5E7.



STYLISH BUNGALOW HAS FULL BASEMENT

space for the installation of a full dining suite, yet also lends itself to the built-in banquette-style nook furnishings which are becoming popular once again. The kitchen-dinette area may be completely isolated via convenient pocket doors, for privacy and hygiene.

A compact mud room facility is sunken two risers from the kitchen-dinette. The stairway to the basement is also accessible from this rear foyer area.

All three bedrooms are positioned to the right of the floor plan and well away from the main living area for freedom from disturbance. Each has good exposure for view and natural light, yet privacy from adjacent homes is preserved. The large master bedroom has a full walk-in closet and a three-piece ensuite bathroom with shower.

This is an eye-catching home design which provides abundant space and all modern convenience features for the growing family.

Plans for design No. 80-1231 may be purchased either by the single set, at a cost of \$125.00 for the first set and \$25.00 for each additional set, or by the package. A live-set plan package, including the first set, is economically priced at \$180.00 and an eight-set package, also including the first set, is only \$220.00.

Whichever method you choose, please include \$5.00 for postage and handling.

Send for the current edition of Select Home Designs magazine, series 50, featuring imaginative decorating and home improvement ideas, plus 250 quality home plans of every type. Available for \$2.75 (\$2.00 plus .75¢ postage and handling).

To order any of these items please send cheque or money order, payable to the Home of the Week, c/o The Halton Hills Herald, Unit 1, 151 Carlingview Drive, Roxdale, Ontario, M9W 5E7.

### LUMBER LAND

WHOLESALE & RETAIL

THIS WEEK'S \* MINI SPECIALS \*

WALL PANELS  
Large 50' x 10' 1/2" 498  
Small 25' x 10' 1/2" 498

CERAMIC TILE  
Large 50' x 10' 1/2" 75¢ sq ft  
Small 25' x 10' 1/2" 75¢ sq ft

453-6374  
HIGHWAY No. 7  
Just West of No. 10 BRAMPTON

### GLASS DOOR FIRESCREENS

- Full Panel Images
- Removable Images
- Tempered Glass
- Insulated Top & Sides
- Heavy Gauge Steel Frame

GRANTS MOTORS LTD.  
732 Queen St. E. #100 853-2930

### ROYAL CITY

WHETHER BUYING OR SELLING  
LOOKING FOR SMALL OR LARGE ACRES  
CALL US FOR ALL YOUR REAL ESTATE NEEDS  
877-5296

### TERRY LANE OF DESIGN DIRECTIONS

INTERIOR ACCESSORIES  
222 DUELPH ST. Corner of Guelph and Mountainview GEORGETOWN 846-3331

### MR. SLEEP

FURNITURE AND SLEEP SHOP  
Beds • Swivel Rockers • Chesterfields • Mattresses  
BIG SELECTIONS SAVINGS  
456-0304  
Eastman Plaza, Corner of Queen & Kennedy, Brampton

### DAVE McMULLEN

General Contracting  
877-8483

- Drywall taping
- Texture spray
- Plaster repairs
- Chimney repairs
- Alterations

### DELREX Aluminum Limited

Aluminum Awning  
Eaves Troughs  
Siding  
Canopies  
Storm Doors  
Windows  
Softlite  
Fascia in Living Colours  
877-5383