

STARTER'S SUSPENSE



Maple Lodge loses bid to produce chickens

By BOB THOMPSON
Herald Special

An appeal by Maple Lodge Farms Ltd. to produce chickens as well as process them, has been rejected by the Ontario Farm Products Appeal Tribunal.

Bob May, co-owner of Maple Lodge Ltd., said in an interview last week, the firm hasn't been officially notified of the decision but he says it is frustrating to have government boards stalling the company's ability to produce for its market.

Maple Lodge has complained that since the quota system was introduced in 1979 by the provincial and federal governments, the Brampton chicken processor has lost one-third of its business.

The Ontario Chicken Products Marketing Board had been fighting a bid by Maple Lodge to have its chicken quota reviewed.

Mr. May says the company needs at least 40 million pounds of chicken to make its demands from suppliers, but is hindered by the quota system. Mr. May said the tribunal

ruled Sept. 4 against Maple Lodge's request for an increased quota. According to the chicken processor owner, the tribunal said the firm was correct, but the tribunal could not do anything about it.

"We are going to do everything we can," Mr. May said after being notified of the decision by the Daily Times last week. "We will go to the courts and appeal to the governments."

The Maple Lodge owner said, "We'll take whatever avenue is open to us."

Maple Lodge already receives nine million pounds of the 53 million pounds allowed yearly in the import quota system. The company is asking for control of 40 million pounds of chicken produced in Ontario where 290 million pounds are produced yearly.

Mr. May said when the quota systems were introduced in 79 Maple Lodge had been promised it would be provided with enough chicken to keep up with market demands. But, so far, the owner says it hasn't happened.

KNOX PRESBYTERIAN CHURCH

CORNER OF MAIN & CHURCH STS.

Anniversary Beef Dinner

Friday, October 16th, 1981
5:00 p.m. - 7:30 p.m.

Adults \$5.00
Students \$3.00
Children 12 Yrs. & Under \$2.00

TICKETS AVAILABLE AT THE DOOR

CHURCH DIRECTORY

This Weekend attend the Church of your Choice

ST. GEORGE'S ANGLICAN CHURCH
60 Guelph St.
877-8044
HECTOR
Rev. Jim Boyle
Sunday, October 11, 1981
8 a.m. Holy Eucharist (New Rite)
9 a.m. Holy Eucharist (Prayerbook)
(Nursery Facilities) Morning Prayer
11 a.m.

HOLY CROSS ROMAN CATHOLIC CHURCH
224 Maple Ave.
Georgetown
PASTOR
Father Dave Cole
ASST. PASTOR
Father Murray Kretsch
MASSES
Sat. - 7 p.m.
Sun. - 8 a.m., 10, 12
For information call:
877-3883



GEORGETOWN ALLIANCE CHURCH
14 Main St. S.
Georgetown
PASTOR
Rev. Peter Ralph, B.A., M.D.v.
SUNDAY SERVICES
5:45 a.m. - Sunday School
11:00 a.m. - Worship Service
8:30 p.m. - Fellowship Service
WEDNESDAY SERVICE
7:00 p.m. - Prayer Meeting
CALL: 877-9818
855-3923
A CHURCH OF THE CHRISTIAN & REFORMED ALLIANCE IN CANADA

MAPLE AVENUE BAPTIST CHURCH
PASTOR
Edwin H. Mitr hall
877-6685 -- 87-0320
EVERY SUNDAY
Family Bible School
9:45 a.m.
Bible & Preaching - Choir Music
11:00 a.m. & 6:00 p.m.
Supervised Nursery
WEEKLY
Bible Study & Prayer
Ladies' Coffee Hour
Youth Time & Recreation
Boys' & Girls' Clubs
MONTHLY
Jr. & Sr. Seniors
Miss' prayer Meeting
Visitors Always Welcome!

IMMANUEL LUTHERAN CHURCH
WINDSOR ROAD
AT CAROLE STREET
PASTOR
REV. DR. J.M. DRICKAMER
Sunday School
9:45 a.m.
- CHURCH SERVICE
11:00 a.m.
Church of the Lutheran Hour

Unfilled Manor beds cause budgetary woes

While members of the region's treasury and public works departments are busy finding ways to recover a \$253,000 shortfall in Halton's sewer account, colleagues in the social services department have a deficit headache of their own.

The demand for residential accommodation at Centennial Manor for senior citizens (as opposed to extended care applications) has dropped, racking up a \$210,000 deficit as residential beds go unused.

Regional chief administrative officer Dennis Perlin told council Wednesday afternoon that the region originally anticipated having at least 80 per cent of the manor's residential beds filled, but current figures show that only 50 per cent of the beds are actually being used. Meanwhile, there is a continuing high demand for extended care facilities at the Manor, located in Milton, for patients needing at least three hours of nursing care every day.

Heavily funded by the province's community and social services ministry, it is expected that most of the Manor's deficit will be recovered through additional provincial funding. About \$70,000 must come from other areas of the Manor budget, social services grants and a general contingency account as the region's share in recovering the shortfall.

Programs which the region has initiated or sponsored may, in fact, be partly responsible for the deficit, Mr. Perlin acknowledged. Recently, Halton has participated in programs such as Meals on Wheels, Halton Helping Hands and home care which help seniors remain in their homes; otherwise, the kind of care they need would possibly only be found in seniors' facilities like the Manor.

"We may be the author of

our own misfortune — or fortune depending on how you look at it — in this matter," Mr. Perlin said.

Regional staffers may consider transfers of social service grants to the Manor budget to help make up the deficit, including the \$10,000 Sheridan Youth Centre grant which the centre badly needs. Sheridan officials are currently scrambling to get more money from the province to maintain high-standard programs for juvenile offenders. Other cutbacks may come

from a capital reserve originally slated for the construction of a crafts room at the Manor and \$3,000 in savings on a fire alarm contract for the facility.

Noting that "these kinds of things don't occur overnight," Oakville Coun. Terry Munnell said that the region has to be ready to respond to demographic and economic changes in the region, thus avoiding deficits caused by badly forecasting trends which are used when budgets are prepared.

the olde Hide House
Canada's Largest Leather Goods Store

featuring...

- Leather
- Suede
- Fine Shearling
- Sheep Skin
- Complete line of Footwear and Other Leather Goods

Excellent Selection and Quality at Competitive Prices

To Better Serve You We Have Now Added:

- Woolens; Sweaters & Blankets
- Fur Lof featuring all the Popular Furs
- Gift, Arts & Craft Section

Open Monday to Friday 10-9 - Saturday & Sunday 10-6

the olde Hide House
ACTON, ONTARIO

49 Eastern Ave.
ACTON
(519) 853-1031
IN THE CENTRE OF TOWN BY THE CNR CROSSING

Public works deficit

Continued from Page 1

neil, echoing sentiments he expressed two weeks ago when the deficit was discovered, said that regardless of the shortfall, the works department should not overlook "obvious maintenance" problems,

fearing they could blossom into costlier headaches in the future.

In addition, Coun. Munnell called on the region to re-examine the sewer surcharge system and how the region has fared under it over the last two years.

Set a Fine Table with these THANKSGIVING FOOD SPECIALS

to complete your dinner....

U.S.A. No. 1 CELERY 58¢	U.S.A. No. 1 RED GRAPES 79¢ per lb.	SNOW VARIETY ONT. No. 1 APPLES \$1.29 per 5 lb. bag
U.S.A. No. 1 LETTUCE 66¢ ea.	U.S.A. No. 1 TOMATOES 49¢ lb.	All the fixings for Thanksgiving TRY OUR HOMEMADE SAUSAGE \$1.89 lb.
ONT. No. 1 PEPPER SQUASH 2 FOR 49¢	ONT. No. 1 TURNIPS 2 FOR 69¢	No. 1 LEAN BACON \$1.59 lb. TURKEYS FRESH GRADE 'A' \$1.39 8-14 LB.

OPEN EVERY SUNDAY
11:00 A.M. - 5:00 P.M.

O'BRIEN MEAT LTD.
77 MILL ST., ACTON 853-2240
CATERING TO YOU 7 DAYS A WEEK

WE'RE OPEN
Mon.-Sat. 9:00-8:00
Wed.-Fri. 9:00-9:00

LANG'S FEED MILL

- Seed Cleaning
- Small Seed Mixing
- Garden Chemicals
- Garden Seeds
- Fertilizers
- Seed Potatoes
- Lawn & Garden Fertilizers

3 Miles North of Silvercreek
On Hellen Rd. 3 - Eastmain
Mon.-Fri. 8:00 a.m. - 6:00 p.m.
Sat. 9:00 a.m. - 12:00 noon
877-2008

BULL WISE
WINDOWS & DOORS
FACTORY OUTLET

COMPLETE LINE OF
"ENERGY SAVING"
WINDOWS & DOORS

We Install

THE PLACE TO SAVE!
71 MOUNTAINVIEW RD. N.
UNIT 5, GEORGETOWN
PHONE: 877-1188

DRIVE A LITTLE
SAVE A LOT... AT

LUMBER LAND
WHOLESALE & RETAIL

THIS WEEK'S
"MINI SPECIALS"

WALL PANELS
Large Stock
Starting At \$4.98
Low At

CERAMIC TILE
Large Stock
Starting At 75¢ sq ft
Low At

453-6374
HIGHWAY 10
Just West of No. 10 BRAMPTON

MATT'S ALUMINUM
SERVING HALTON & PEELE REGIONS

- ALUMINUM SIDING
- SOFFIT & FASCIA
- 5" SEAMLESS EAVESTROUGH
- SHUTTERS STORMDOORS & WINDOWS
- CHOICE OF COLOURS

FREE INSTALLATION & REPAIR ESTIMATES
SEE ABOUT OUR GUARANTEED WORKMANSHIP
877-4747

AQUAFINE
WATER SOFTENERS & WATER TREATMENT EQUIPMENT

LOW MONTHLY RENTALS
FREE SERVICE FREE INSTALLATION

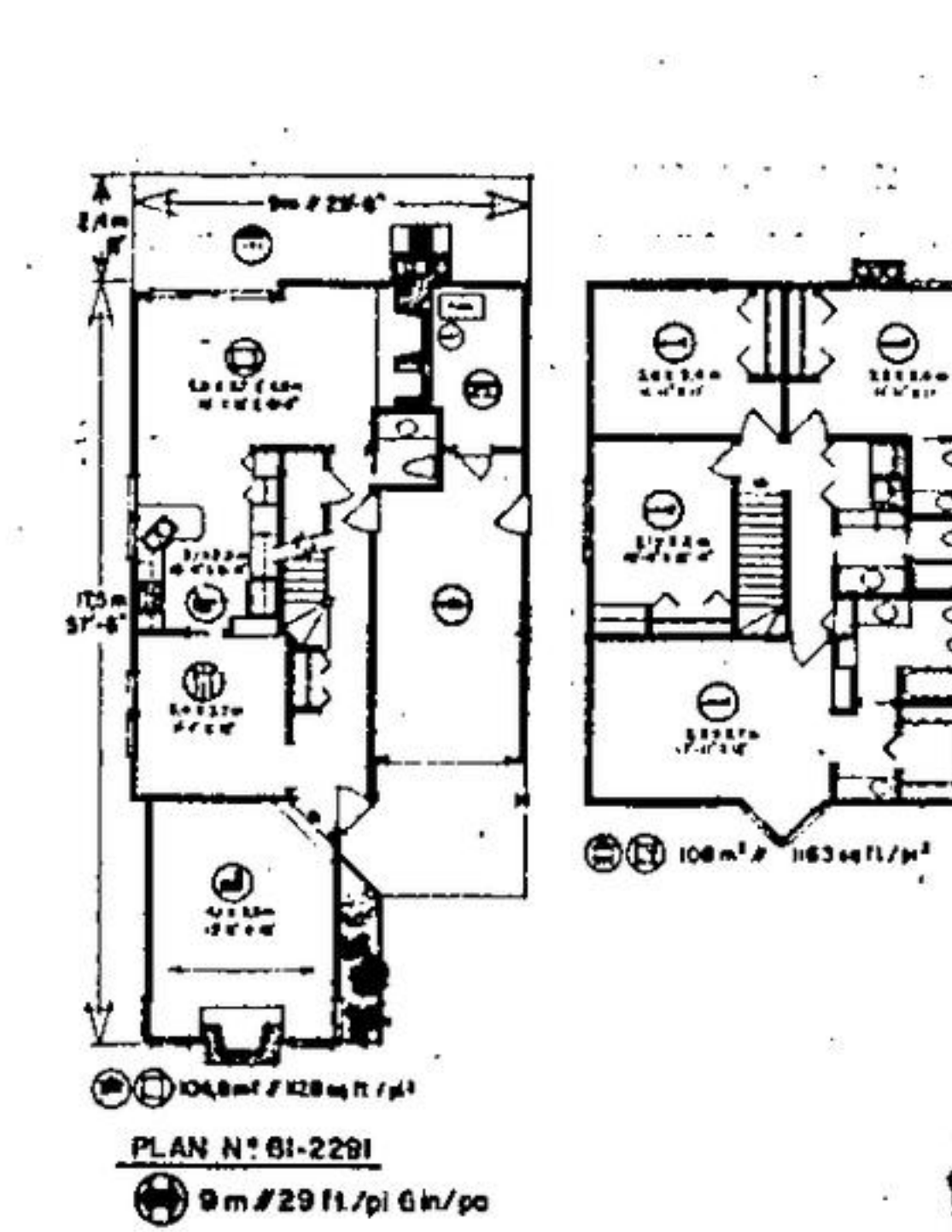
348 Guelph St. 877-6242

GORD HAMILTON
CUSTOM CARPENTRY

- Custom Homes • Renovations • Additions
- Vinyl and Wood Windows (Custom Made or Stock Sizes)

AREA AGENT FOR
DUFFERIN WINDOWS
Call 877-3144 or
1-519-833-2857

HOME OF THE WEEK



LUXURIOUS FOUR BEDROOM HOME IDEAL FOR A NARROW LOT

This stately Tudor-style two storey home design is perfectly suited to the very narrow frontage urban residential building lot, yet it provides almost 2,300 square feet of well-organized finished floor area on its two levels. The high-impact exterior is finished in the perennially-popular Tudor style — stucco and dark-stained barge boards, with diamond-paned windows and large brick chimney. The roof could be finished in either shales or more conventional shingles, according to individual preference and regional material costs.

The weather-protected main entry leads into an angular reception foyer and outdoor storage area, from whence traffic moves left and down two steps into the rectangular sunken living room. The living room features a dramatic vaulted ceiling and a raised-hearth masonry fireplace flanked by full-height diamond-paned and clerestory windows.

A well-planned partial U-shape kitchen divides the dining room and the dinette-family room combination, providing for excellent separation of formal dining when entertaining and more casual family meals. The kitchen has a step-saving work triangle, generous counter-top work surfaces and abundant cupboard storage. A convenient snack bar counter could be installed on the family room side, for those who prefer. The spacious family room provides ample space for multi-purpose furnishing, i.e., dinette-lounge, according to individual family tastes and space requirements. A wide raised-hearth masonry fireplace with built-in log storage, and a barbecue on the patio side, greatly facilitates cook-outs; and the sliding glass walk-through provides easy access to the patio for alfresco dining in fine weather.

The two-piece vanity bathroom is accessible from all areas of the lower level; and commodious storage closets are built-in beneath

the stairway and behind the fireplace in a utility area to the rear of the single-car enclosed garage. Either storage area could be decorated as a mud room facility, as both are readily accessible from the garage and the outdoors.

All four bedrooms are positioned on the second level, accessible via stairway from the main hallway in the reception foyer. Each of the bedrooms has good exposure for view and natural light, and each has generous closet storage. A laundry facility and spacious linen storage closet is positioned central to all four bedrooms and is concealed behind lowered bi-fold doors. The main bathroom separates the commode and the tub from the vanity area via convenient pocket door, for greater flexibility.

The master bedroom suite is spacious and luxurious, featuring a full walk-in closet, an angular seating alcove, and a five-piece ensuite bathroom with tub, bidet and a separate vanity area for madame.

Plans for design No. 61-2291 may be purchased either by the single set, at a cost of \$125.00 for the first set and \$25.00 for each additional set, or by the package. A five-set plan package, including the first set, is economically priced at \$180.00 and an eight-set package, also including the first set, is only \$220.00.

Whichever method you choose, please include \$5.00 for postage and handling.

Send for the current edition of Select Home Designs magazine, series 50, featuring imaginative decorating and home improvement ideas, plus 250 quality home plans of every type. Available for \$2.75 (\$2.00 plus .75 postage and handling).

To order any of these items please send cheque or money order, payable to the Home of the Week, Attention: Home of the Week, C/O The Halton Hills Herald, Unit 1, 151 Carlingview Drive, Rexdale, Ontario, M9W 5E7.

ACADIAN POOLS LTD.

Free Computer Pool Water Analysis

124 Guelph St. Unit 21 877-9562

DELREX
Aluminum Limited

Aluminum Awnings
Eavestroughs
Siding
Canopies
Storm Doors
Windows
Fascia in Living Colors

877-5383

TW THUMB LIGHTHOUSE INC.

SAVE MONEY - SAVE ENERGY
- PRODUCTION & CUSTOM MADE
WOODEN AND VINYL CLAD

- WINDOWS
- ENTRANCE UNITS
- SLIDING DOORS
- INSULATED WINDOWS

79 MOUNTAINVIEW RD. N.
877-9332 453-1388

ROYAL CITY

WHETHER IT'S BUYING OR SELLING
LOOKING FOR SMALL OR LARGE ACREAGE
SEE US FOR ALL YOUR REAL ESTATE NEEDS

877-5296

THE GEORGETOWN STOVE AND FIREPLACE CO.

MIRRO
FOR FIREPLACE ENJOYMENT AND HIGH EFFICIENCY HEATING

CUSTOM KITCHEN CUPBOARDS

218 GUELPH STREET, UNIT 28
GEORGETOWN, ONTARIO
877-8213

MR. SLEEP
FURNITURE AND SLEEP SHOP

Beds • Swivel Rockers
Chests/dressers • Mattresses

BIG SELECTIONS
SAVINGS

456-0304
Eastview Plaza, Corner of
Queen & Kennedy, Brampton

THE PLUMBING STORE

SUPPLYING YOU WITH:
PLUMBING FIXTURES & PLUMBING REPAIR PARTS

FEATURING THE TOP QUALITY LINES OF:
DELTA, WATLAC, BRADLEY, AMERICAN STANDARD
MOEN & CRANE

FREE ADVICE! FOR THE DO-IT-YOURSELFER

330 GUELPH 877-3592

B&B WOODWORKING

WE DO ALL PHASES OF WOODWORKING
INTERIOR & EXTERIOR
QUALITY WORKMANSHIP
AT REASONABLE RATES

877-0472 or 877-5573

E. A. Mitchell
LIMITED

REALTORS • APPRAISERS
MORTGAGES

PHONE 451-8232
44 Queen St. E., Brampton