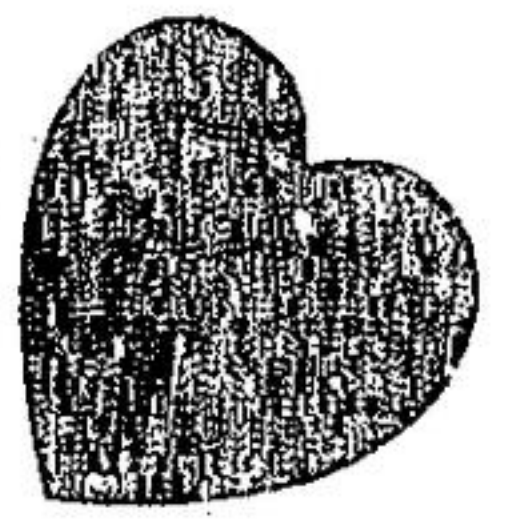




# Make your next move a family affair



**SPACIOUS TOWNHOME WITH GARAGE**  
BROADLOOM THROUGHOUT, GLASS SLIDERS FROM LIVING ROOM TO DECK, GLASS SLIDERS FROM REC ROOM AREA TO PATIO. EXCELLENT MORTGAGE AT 11 1/4% INTEREST FOR \$43,000 - TILL 1988. CALL DON JARVIE.



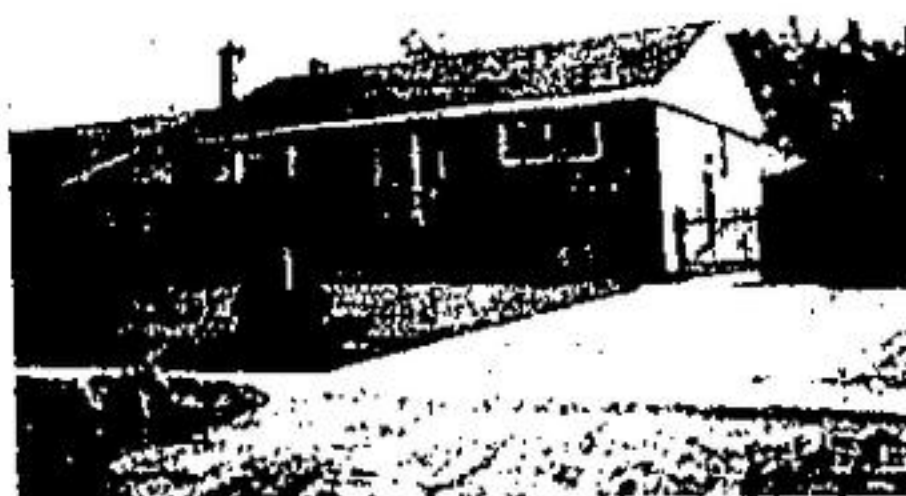
**17.5% MORTGAGE TILL JUNE 1986**  
YES THAT'S RIGHT. DON'T DELAY GETTING STARTED IN HOME OWNERSHIP ANY LONGER. THREE BEDROOMS, FAMILY ROOM WITH FIREPLACE. VILLAGE LIVING ON COUNTRY SIZE LOT 57 x 140. DON'T DELAY, CALL CLARA BRANDT TODAY ONLY \$84,800.



**MORTGAGE INTEREST A PROBLEM**  
TAKE A LOOK AT \$48,000 AT 10 1/2% TILL OCT. 1983. TWO AND A HALF YEAR YOUNG BRICK BUNGALOW, 3 BEDROOMS, FINISHED FAMILY ROOM, 2 FIREPLACES, 12 X 24 SUN DECK, PAVED DRIVE, ATTACHED GARAGE. DON'T DELAY. CALL DON JARVIE TODAY.



**GLEN WILLIAMS**  
LOVELY OLDER HOME ON BIG VILLAGE LOT 140 X 130 FEET. MATURE TREES, SHRUBS, GARDEN. BIG COUNTRY KITCHEN, SEPARATE DINING ROOM, LARGE LIVING ROOM WITH PLUSH BROADLOOM, GLASS SLIDERS TO DECK. CALL CLARA BRANDT.



**WELL MAINTAINED BRICK BUNGALOW**  
LOT 65 X 130 FEET. LOVELY PINE KITCHEN CUPBOARDS, EXCELLENT REC ROOM, BAR, WOOD-BURNING STOVE. LOADS OF VALUE AT \$78,500.00. WITH EXCELLENT \$48,700 MORTGAGE AT 10 1/4% INTEREST. CALL CLARA BRANDT.



**35,700 MORTGAGE AT 13% TILL 1985**  
WILL CARRY FOR LESS THAN RENT AT \$434. A MONTH. LOVELY TOWNHOME, WELL DECORATED. EAT IN KITCHEN, FULL BASEMENT. FULL PRICE JUST \$42,900. CALL DON JARVIE.



**VILLAGE SETTING**  
BRICK & ANGELSTONE 3 BEDROOM BUNGALOW, LARGE LIVING ROOM WITH BAY WINDOW & INDOOR GARDEN, EAT-IN KITCHEN WITH SLIDING GLASS DOORS TO PATIO & FENCED YARD - MAKE YOUR MOVE NOW AT ONLY \$84,500. CALL HERB SPITZER 877-5262 OR 793-4690.



**\$89,900.00.**  
THIS HOUSE NOW AVAILABLE. NEW IN GEORGETOWN. 3 BEDROOMS, 1 1/2 BATHS ON POPULAR CRESCENT LOT. CHOOSE YOUR OWN CUSTOM FEATURES AND DECOR. CALL HERB SPITZER 877-5261 OR 793-4690.



**BEAUTIFUL HILLS OF ERIN**  
3 ACRES, POND, CHARMING SIDESPLIT, 3 BATHROOMS, 2 BRICK FIREPLACES, PINE REC ROOM, 3 BEDROOMS, COUNTRY SIZED KITCHEN. FORMAL DINING AND LIVING, 2 CAR GARAGE. LOW 13 1/2% MORTGAGE. PRICE ONLY \$99,900. CALL HERB SPITZER 877-5261 OR 793-4690.



**HILLS OF ERIN**  
1 ACRE, TREES AND POND, OUTDOOR FIREPLACE AND BBQ. STONE WALKS AND STEPS. 3 BEDROOMS, BRICK BACKSPLIT, REC ROOM, STONE FIREPLACE. DON'T MISS THIS ONE AT \$95,900. CALL HERB SPITZER 877-5261 OR 793-4690.



**SNUGGLE UP**  
IN THE WARMTH AND COMFORT IN THIS COSY 4 BEDROOM HOME WITH 2 BATHROOMS, REC ROOM AND BAR. BEAUTIFUL GARDENS, FLOWERS AND STONE PATIO WITH OUTDOOR BRICK FIREPLACE. IMMEDIATE POSSESSION. FULL PRICE ONLY \$73,900. CALL HERB SPITZER 877-5261 OR 793-4690.



**100 ACRES**  
PONDS, 12 STALL HORSE BARN, 50 X 100 STEEL RIDING ARENA, BEAUTIFUL 2 STOREY HOME, HUGE MASTER LEADING OFF TO INDOOR POOL, SAUNA, BATH AND KITCHENETTE, FORMAL DINING ROOM, LIVING ROOM, BRICK FIREPLACE, REC ROOM, STONE FIREPLACE, BUILT IN BAR WITH WATER ON TAP. DON'T MISS THIS BUY AT \$375,000. CALL HERB SPITZER 877-5261 OR 793-4690.



**1ST MORTGAGE \$85,000 AT 9%**  
3 BEDROOM BUNGALOW AND 11 UNIT MOTEL. FOR STATEMENT AND PROFIT AND LOSS CALL JOHN KROEZEN.



**GOOD INVESTMENT**  
HAS TO BE SOLD. 3 BEDROOM HOME WITH SEPARATE OFFICES RENTED FOR \$350. A MONTH. ASKING \$89,900. MAKE AN OFFER. CALL TENA KROEZEN.



**MOVE IN CONDITION**  
3 ACRES JUST N. OF GEORGETOWN. 3 BEDROOM CUSTOM BUILT BUNGALOW, MAIN FLOOR FAMILY PLUS FIREPLACE, 3 WALKOUTS. FOR INFORMATION CALL JOHN KROEZEN.



**\$53,000 10 1/2% MORTGAGING TILL 1995!!!**  
THIS FABULOUS 4 BEDROOM ALL BRICK BUNGALOW IS ONLY MINUTES FROM GEORGETOWN. FEATURING MAIN FLOOR FAMILY ROOM, ADJOINING KITCHEN, FIREPLACE, WALKOUT TO FLAGSTONE PATIO, 3 BATHS, HEATED INGROUND POOL AND HEATED DRIVEWAY. ONLY \$139,000!!! CALL OLGA FEDUN.



**6 WOODED ACRES**  
IMPRESSIVE BRICK BUNGALOW WITH CIRCULAR DRIVEWAY AND FOUNTAIN. MAIN FLOOR FAMILY ROOM, FIREPLACE, GLASS SLIDING DOORS TO DECK, COUNTRY KITCHEN, OAK PEGGED FLOORS, MAIN FLOOR LAUNDRY. 1ST MORTGAGE OF \$68,000 AT 10 1/4%. CALL OLGA FEDUN.



**FANTASTIC HOME TO BELFOUNTAIN**  
SECLUDED 100' BRICK BUNGALOW. SUNKEN LIVING ROOM, ELEVATED DINING ROOM, FABULOUS FAMILY ROOM WITH BRICK FIREPLACE, WET BAR, SLIDING DOORS TO COVERED BRICK PATIO AND HEATED INGROUND POOL, 4 BEDROOMS, DEN PLUS PRIVATE IN-LAW SUITE AND MUCH MORE. \$180,000 IN FINANCING AT LOWER INTEREST RATE. \$239,000. CALL OLGA FEDUN.



**COUNTRY SPECIAL**  
GORGEOUS 1 1/2 ACRE TREETED LOT ENHANCES THIS SPOTLESS 3 BEDROOM SIDESPLIT WITH LARG PATIO, ATTACHED GARAGE, 2 FIREPLACES, AND LARGE KITCHEN. ONLY \$129,000. CALL MILLIE ADAMS.

**VACANT LAND - 56 ACRES**  
OVER 1000 FEET FRONTAGE, ABOUT 50 ACRES CLEAR ROLLING LAND WITH BALANCE MIXED BUSH. ASKING \$75,000. CALL MURRAY SMITH.



**11 1/2% MORTGAGE MAY BE YOURS**  
ON THIS 3 BEDROOM TOWNHOUSE WITH ATTACHED GARAGE, REC ROOM WITH WALKOUT, BROADLOOM AND BALCONY FROM LARGE LIVING ROOM. ONLY \$81,900. CALL MILLIE ADAMS.



**DON'T MISS THIS**  
3 BEDROOM BUNGALOW WITH ATTACHED GARAGE ON BEAUTIFUL RAVINE LOT. MAIN FLOOR FAMILY ROOM, REC ROOM AND EXTRA BEDROOM PLUS DINING ROOM AND EAT IN KITCHEN. ASKING \$84,500. CALL MILLIE ADAMS.



**CHARMING**  
OLDER 4 BEDROOM BRICK HOME. LARGE LIVING ROOM WITH FIREPLACE, FORMAL DINING ROOM, REC ROOM, ATTIC ROOM, AND SCREENED IN PORCH. BEAUTIFUL OAK TRIM AND DOORS. ASKING ONLY \$89,900. TO VIEW CALL MILLIE ADAMS.



**JUST LISTED - NORVAL**  
DON'T MISS THIS LARGE THREE BEDROOM BUNGALOW WITH SPACIOUS SEPARATE DINING ROOM, FULL BASEMENT WITH WALKOUT, ATTIC ROOM, ON HUGE 70 x 170' LOT. A GREAT BUY AT ONLY \$72,900. CALL MILLIE ADAMS.

**325 ACRES**  
TREES, STREAM, PONDS, 2 ROAD FRONTAGE. LOCATED SOUTH OF HWY. 7 ACROSS FROM FAIRY LAKE. FULL PRICE ONLY \$1,100 PER ACRE. CALL HERB SPITZER 877-5261 OR 793-4690.

**BUILD YOUR DREAM**  
HOME ON THIS 10 ACRES. FRONTAGE ON TWO ROADS. CALL TENA KROEZEN.

**HIGHWAY FRONTAGE**  
COMMERCIAL BUILDING LOT. BUY NOW - PRICED TO SELL AT ONLY \$95,900. CALL HERB SPITZER 877-5262 OR 793-4690.

## REPRESENTATIVES AVAILABLE TO ASSIST YOU DURING NON-OFFICE HOURS



Dan Levy (Manager) 528-6990  
Herb Spitzer (Associate) 877-9955  
Olga Fedun 877-5716

Clara Brandt 877-1063  
Millie Adams 877-1283  
John Kroezen 877-2722  
Murray Smith (Acton) 853-0315

Wendy Shortill 877-0881  
Don Jarvie 877-0288  
Tena Kroezen 877-2722



877-5261

793-4690