



### MOUNTSBERG 'MUPPETS'

Always a favorite with the kids, the Mountsberg Puppet Theatre will be making a repeat performance in Halton Hills this Friday. The puppet troop travels all over the Halton region performing for children and telling them how to protect the environment. Through the use of puppets, the troop hopes to make the children more aware of the environment and tells them the dangers of littering, picking flowers or disturbing wild animals. The theatre will be in Georgetown's Cedarvale auditorium at 11 Friday morning and in the Acton Public Library at 2 that afternoon.

## Halton 4-Hers view duck farm, test plots

By LEANNE PARSONS  
Halton 4-H  
Poultry Club

The fourth regular meeting of the Halton 4-H Poultry Club was held July 27 at Webfoot Hatchery near Elora.

A tour of the duck and goose farm was given by Ron Wilson. We were shown different areas of the farm such as where the eggs were hatched and incubated. We then wrote our annual quiz. The year end barbeque was discussed and a date was set. A committee was chosen for organizing the barbeque. It will be on August 24 at Allan Parson's home, Campbellville.

By KEITH MIDDLEBROOK  
Halton 4-H  
Field Crop Club

The Halton 4-H Field Crop Club met July 28 at the farm of Harvey and John Nurse. George Annette and Bill Allan of Cynamid were there.

Mr. Nurse took us out and showed us his corn test plots. Mr. Annette showed us some smart and corn borer on the plots. Then Mr. John Nurse took us over and showed us his soybeans.

George and Bill took us to their Cynamid corn plots. They have weed spray trials on the farm. We went to the barn

and were shown the equipment they use to work the land. Bill showed us the two sprayers they use. One is on bicycle wheels with a cartridge to supply pressure and the other was run by a battery. We were also shown the sprays they use and some insects that are found in corn. John Nurse had some weeds set up to identify. The members did well with the identification.

We thanked George Annette and Bill Allan for coming, following which donuts and pop were supplied courtesy of Harvey and John Nurse.

TOWN OF HALTON HILLS  
16 MAIN STREET, HALTON HILLS  
ON L0R 1R0  
877-5185

### NOTICE OF PUBLIC MEETING

The Subsidary Planning Board of the Town of Halton Hills will hold a Public Meeting to present downtown alternatives as part of the Phase II section of the Downtown Study Program, which relates to the rehabilitation and redevelopment of the Central Business Districts of the communities of Acton and Georgetown.

ALL INTERESTED CITIZENS ARE WELCOME

TIME: 7:00 p.m.  
DATE: September 1, 1981  
PLACE: Municipal Administration Building (formerly Exquisite Municipal Office) R.R.2 - 7th Line (Trafalgar Road) Town of Halton Hills

M.P. Vandell, B.A., M.A.  
Planning Director  
Town of Halton Hills

# The 'Phantom Save' a devastating bridge bid

The "Phantom Save" in duplicate bridge is probably the most devastating bid that a pair can make. Of course, the bid is made because the bidder feels he can "save" some points for his team. Let me explain.

Today's example hand played by the Georgetown Duplicate Bridge members demonstrates this concept. At one table, the bidding went: S - pass; W - 1C ???; N - double; E - 1H; S - 1S; W - 2H; N - 2S; E - 3H; S - 3S; W - pass; N - 4S; E - ???.

If East passes, and N-S make 4 spades, the N-S pair will earn +620 and E-W will get a poor score.

However, if East bids 5H, expecting to be doubled, and can protect this bid to down three, this will prevent the N-S pair from realizing their due. Instead, the N-S pair will earn only 500 points for putting 5H down.

Looking at East's defensive values if the spade contract is played, this line of reasoning appears sound. Five hearts by East is the "phantom save"

because the 4 spade contract will not make.

East has to trust partner in the balance seat to make the decision but East has my sympathy on this deal.

THE HAND  
Bd H 15 SA 962  
Dir S HQ 98 N  
Vul N-S DA QJ  
SK 8753 C 1097  
HA 543 W  
DK SQ J 104  
CK 42 D 109543  
CA Q 85

#### TRIF ANALYSIS

N-S have an 8 card spade fit and 22 HCP between them, so it would seem that they'd play a spade partscore on this deal. They may, but most likely as defenders of 1S!

S H K J 10 7 6 2  
D 8 7 6 2  
C J 6 3  
S  
S Q J 10 4  
H  
D 10 9 5 4 3  
C A Q 8 5

After W opens, 1S North has no convenient bid, and if East also passes, South will see no reason to balance.

It is an awkward hand both to play and defend; even though it looks as if West should take only 2 tricks (the Club K and the 5th spade) the defenders will probably allow declarer to take 4 because they can't draw trumps (declarer would run hearts).

If East scrapes up a 1NT response to 1S he'll be surprised to hear his partner's 2H rebid. He should jump to 4H because it might make and if it doesn't N-S have a minor game. In fact 4H goes off one but N-S can make 5D.

Arthur Kwei. Second, Eileen Craig and Isabelle Mundy. Third, Mike Larusso and Vi Taylor; fourth, Duke Wilson and Bill Dinan.

The East-West winners were Judy Rivers and Jack Kanra-maker. Second, Roy Turton and Lyanne Kwei. Third, Fred Allen and Gus Flesch. Fourth Marilyn and Ab Wardrop.

Remember, beginning in September, the Georgetown Duplicate Bridge Club will be conducting a series of bridge lessons for the novice players interested in playing bridge. The lessons will be conducted by Duke Wilson every Tuesday night at 7:45 p.m. in the Georgetown Legion Hall.

Bring a friend and learn together. Call David Rivers at 877-3670 for further information.

The North-South winners at the Georgetown Club this week were Petar Gostovic and

## Ex-librarian's artwork exhibit kicks off events at new complex

The Halton Hills Public Libraries are already doing their bit to make the soon-to-open library-cultural centre in Georgetown a busy and fun place to be.

With the official opening set for Oct. 15 amid an active week of special activities, the library board will present an exhibition of mixed media artwork by Marjorie Nazer of Georgetown Oct. 15 through November.

The debut show in the library-gallery area known as "The Nave" is fittingly devoted to Miss Nazer's work. The Market Street resident served for many years as the chief librarian in Georgetown, building her reputation as an artist and an artisan over the years with shows at Gallery House Sol and elsewhere. As well as painting in oils and watercolor, she has tried her hand

at stained glass, crochet and other media.

The South Central Regional Library System and the ministry of culture and recreation's Outreach program are helping the local library board bring The Family of Man, a well-known folk music group, to the centre Oct. 28. The group will perform inside the 260-seat theatre facility at 7:30 p.m. There is no admission price,

but reserved seating is limited, so pick up your tickets by Oct. 27.

Admission is free again for "Paddington Bear", a children's theatre presentation coming Oct. 31 at 2 p.m. courtesy of Erewhon Theatre. Again, the library is being assisted by the Regional System and Outreach, and again, tickets should be picked up no later than the day before the performance.

## Save this Summer with: HOME POOL OUTLET & HOME POOL SERVICE



Your Mursatt Dealers

FREE DELIVERY

- 9 KG. STABILIZED CHLORINE.....\$52.95
- 9 KG. 20 OZ. PUCKS.....\$69.95
- 9 KG. SHOCK.....\$44.99
- 4 LITRES ALGACIDE.....\$8.50
- 4 LITRES MURIATIC ACID.....\$4.00

Solar Blankets Filters Automatic Vacuum, Replacement Parts, Ladder, Maintenance Kits, Games, Replacement Liners

FOR SERVICE & SATISFACTION CALL

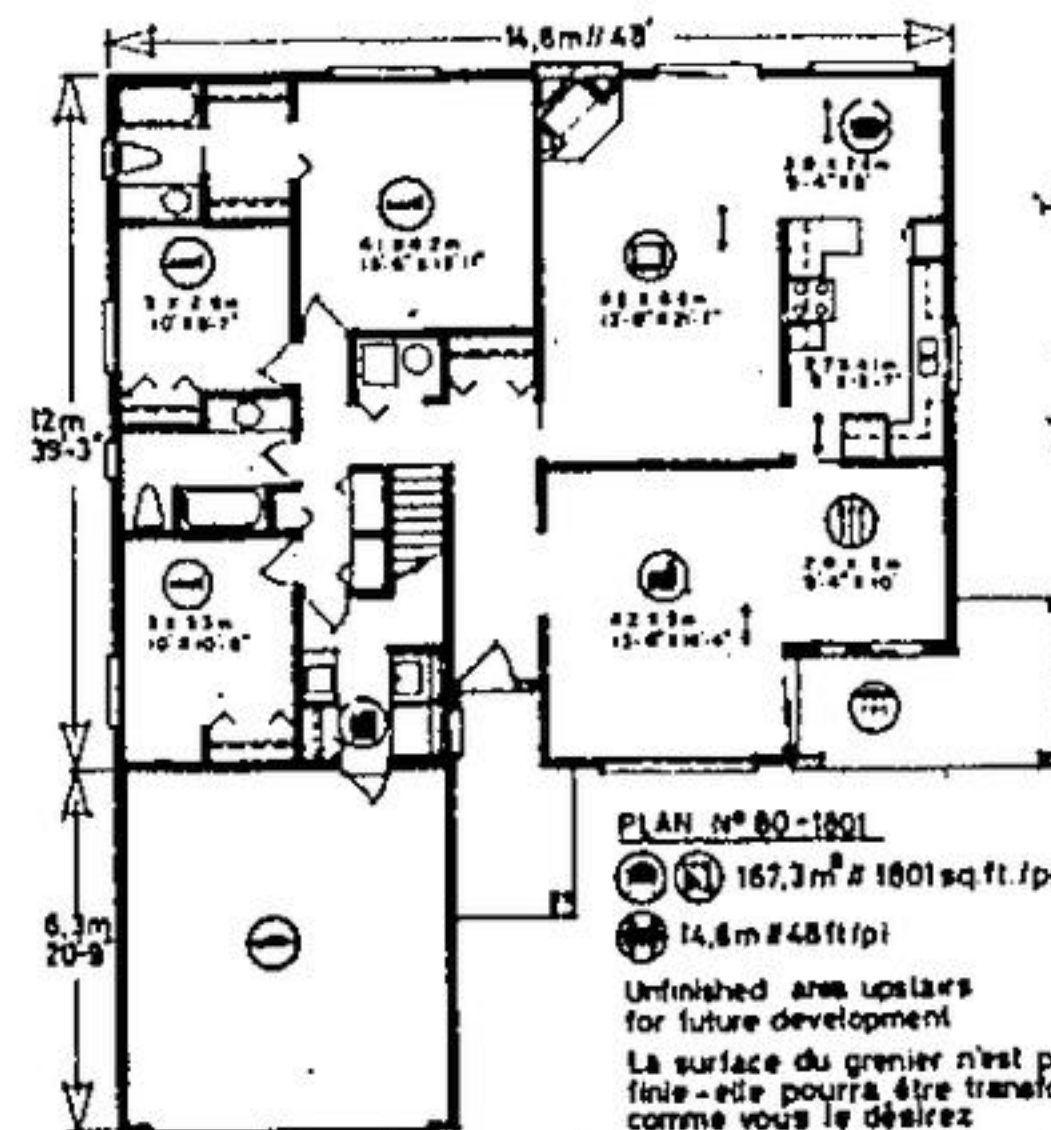
JOE 877-5077 - BOB 877-9101 or 519-833-2018

### LANGS FEED MILL CO. LTD.

- Soil Cleaning
  - Small Seed Mixing
  - Garden Chemicals
  - Garden Seeds
  - Best Plants
  - Seed Potatoes
  - Lawn & Garden Fertilizers
- 3 Miles North of Elvanscreek  
On Halton Rd. 3 - Ballinacree  
Mon. - Fri. 8:00 a.m. - 5:00 p.m.  
Saturday 8:00 a.m. - 12:00 noon  
877-2008

**ROYAL CITY**  
Whether it's buying or selling  
LOOKING FOR SMALL OR  
LARGE ACREAGE  
SEE US FOR ALL YOUR  
REAL ESTATE NEEDS  
877-5296

## HOME OF THE WEEK



### SPACIOUS BUNGALOW WITH UN-FINISHED AREA FOR DEVELOPMENT

Here's a strikingly contemporary home design of the new-generation bungalow type which is perfectly suited to the wider frontage residential building lot, and which provides 1,800 square feet of finished floor area on the ground level, for present use, and which provides for a further 440 square feet of potential accommodations or recreational area in the unfinished partial storey. The exterior is finished in mixed horizontal and vertical channel siding, which is both practical and eye-appealing. Profuse use of fieldstone veneer and a heavy shake roof lend a "touch of country" to the design. For those who prefer, the roof could be alternately finished in more economical shingles.

This weather-protected main entry leads into a long reception foyer and outdoor storage area, from whence traffic moves to the right, into the large L-shape

living-dining room combination. The living room features a dramatic vaulted ceiling and a sliding glass walk-through leading onto a front-facing patio. The dining area has a second sliding glass walk-through which provides access to the front patio for outdoor dining in fine weather.

The spacious L-shape kitchen is positioned mid-way between the formal dining room and the dinette/family room combination, which features provides for excellent separation of formal dining and more casual dining styles. The vast family room/TV lounge features a corner-positioned wood-burning fireplace and sliding glass doors leading onto a rear patio. The kitchenette may be completely isolated via convenient pocket doors for privacy and hygiene.

All three bedrooms, the master bedroom, and a compact laundry-utility and mud

room are positioned to the left of the floor plan, for access and freedom from disturbance. Each of the bedrooms has generous closet storage and excellent exposure for view and natural light. The spacious master bedroom has a full walk-in closet and a three-piece ensuite bathroom with tub.

A two-car enclosed garage, with access to the mud room facility, completes the first level convenience features of this practical and appealing design.

A partial storey above the bedroom area is accessible via stairway from the main hallway near the reception foyer. This area could be developed as a fourth bedroom, as a lounge/study area for older children, or as an office for the business-oriented family.

Plans for design No. 80-1801 may be purchased either by the single set, at a cost of \$125.00 for the first

set and \$25.00 for each additional set, or by the package. A five-set package, including the first set, is economically priced at \$180.00 and an eight-set package, also including the first set, is only \$220.00.

Which ever method you choose, please include \$5.00 for postage and handling. Ontario residents please add 7% sales tax.

Send for the current edition of Select Home Designs magazine, series 48, featuring imaginative decorating and home improvement ideas, plus 250 quality home plans of every type. Available for \$2.75 (\$2.00 plus 75¢ postage and handling).

To order any of these items please send cheque or money order, payable to the Home of the Week, c/o The Halton Hills Herald, Suite 201, 651A Jane Street, Toronto, Ontario, M6N 4C4.

**CANADA TRUST**  
877-9500  
29 Main Street S.  
Georgetown

**SPACE PLUS COMFORT**  
Positively superior, all of distinction, 4 bedrooms, 2 story, brick home in beautiful Marywood Meadows. Super family room with fabulous brick fireplace with walkout off kitchen. Bright living room with french doors leading into formal dining room. Excellent mortgage. Price \$127,000.

**BEAUTIFUL TOWNHOUSE**  
In River Run. Fantastic mortgage. Asking \$59,500. Comes with eat-in kitchen, large L-shape living room with walkout to deck, 3 bedrooms. For further details call 877-9500.

**3 ACRES OF BEAUTY**  
3 bedroom ranch bungalow with hardwood floors, plaster walls, beautifully maintained, eat-in kitchen includes overlooks 3 acres of beauty. Very large living room with L-shaped dining room, full basement. This house is exceptionally well built and maintained. Comes with 2 car detached garage and workshop. Priced at \$129,900.

**FANTASTIC MORTGAGE**  
3 bedroom townhouse, easy commuting, walking distance to all amenities. Price at \$49,900.

**SOBERLY CLEAN**  
3 bedroom brick bungalow on a beautiful tree lot. Work kitchen with adjoining dining area, large living room, basement has a charming games room with dance floor, rec. room with electric fireplace and wet bar. Comes complete with den. Asking price only \$79,900.

**15% MORTGAGE AVAILABLE**  
2 storey, 4 bedrooms, brick home with eat-in kitchen, bright living room with adjoining dining room. Main floor family room with fireplace & walkout to large yard. Priced at \$87,500. Purchaser most qualify for above mortgage.

**EMU WISE**  
WINDOWS & DOORS  
FACTORY OUTLET  
COMPLETE LINE OF  
"ENERGY SAVING"  
WINDOWS & DOORS  
• We Install  
THE PLACE TO SAVE!  
71 MOUNTAINVIEW RD. N.  
UNIT 8, GEORGETOWN  
PHONE: 877-1188

DRIVE A LITTLE  
SAVE A LOT... AT  
**LUMBER LAND**  
WHOLESALE & RETAIL  
THIS WEEK'S  
"MINI SPECIALS"  
WALL PANELS  
Large Selection Starting As Low As... AND UP  
CERAMIC TILE  
Large Selection Starting As Low As... 75¢ sq. ft. AND UP  
453-6374

INDUSTRIAL No. 7  
Ave West of No. 10 BRAMPTON  
**MATT'S ALUMINUM**  
SERVING HALTON & PEELE REGIONS  
• ALUMINUM SIDING  
• SOFFIT & FASCIA  
• 5" SEAMLESS EAVESTROUGH  
• SHUTTERS-STORMDOORS & WINDOWS  
• CHOICE OF COLOURS  
FREE INSTALLATION & MEASUREMENTS  
ASK ABOUT OUR  
GUARANTEED WORKMANSHIP  
877-4747

**AQUAFINE**  
WATER SOFTENERS &  
WATER TREATMENT EQUIPMENT  
LOW MONTHLY RENTALS  
FREE SERVICE FREE INSTALLATION  
348 Guelph St. 877-6242

**GORD HAMILTON**  
CUSTOM CARPENTRY  
• Custom Homes • Renovations • Additions  
• Vinyl and Wood Windows (Custom Made or Stock Sizes)  
AREA AGENT FOR  
DUFFERIN WINDOWS  
Call 877-3144 or 1-519-833-8857

**MR. SLEEP**  
FURNITURE AND SLEEP SHOP  
Dees - Swivel Rockers  
Chesterfields - Mattresses  
BIG SELECTIONS SAVINGS  
456-0304  
Eastern Plaza, Corner of  
Shannon & Kennedy, Brampton

**THE PLUMBING STORE**  
SUPPLYING YOU WITH:  
PLUMBING FIXTURES & PLUMBING REPAIR PARTS  
FEATURING THE TOP QUALITY LINES OF:  
DELTA, WALTEC, BRADLEY, AMERICAN STANDARD, MOEN & CRANE  
FREE ADVICE! FOR THE DO-IT-YOURSELFER  
330 GUELPH 877-3592

**B&B WOODWORKING**  
WE DO ALL PHASES OF WOODWORKING INTERIOR & EXTERIOR QUALITY WORKMANSHIP AT REASONABLE RATES  
877-0472 or 877-5573

**ACADIAN POOLS LTD.**  
Free Computer Pool Water Analysis  
Improved pool Above Ground Pools and Services  
ALL YOUR CHEMICAL NEEDS  
134 Guelph St. (Unit 3) 877-9562

**DELREX Aluminum Limited**  
Aluminum Awnings Eavestroughs, Siding Canopies Storm Doors Windows Soffit Fascia in Living Colors.  
877-5383

**TW TUMBLINGWOODS INC.**  
SAVE MONEY - SAVE ENERGY PRODUCTION & CUSTOM MADE WOODEN AND VINYL CLAD  
• WINDOWS  
• ENTRANCE UNITS  
• SLIDING DOORS  
• INSULATED WINDOWS  
79 MOUNTAINVIEW RD. N.  
877-9332 463-1388

**BEAULIEU ROOFING**  
• Roofing • Eavestroughing • Asphalt Roofing • Shingle & Flat  
• Residential • Commercial • Industrial  
878-2405  
R.R.3 MILTON (EST. SINCE 1957)

**THE GEORGETOWN STOVE AND FIREPLACE CO.**  
**HIBSANO**  
FOR FIREPLACE ENJOYMENT AND HIGH EFFICIENCY HEATING  
CUSTOM KITCHEN CUPBOARDS  
348 GUELPH STREET, UNIT 28  
GEORGETOWN, ONTARIO  
877-8213

**E. A. Mitchell LIMITED**  
REALTORS • APPRAISERS MORTGAGES  
PHONE 451-6232  
44 Queen St. E., Brampton