



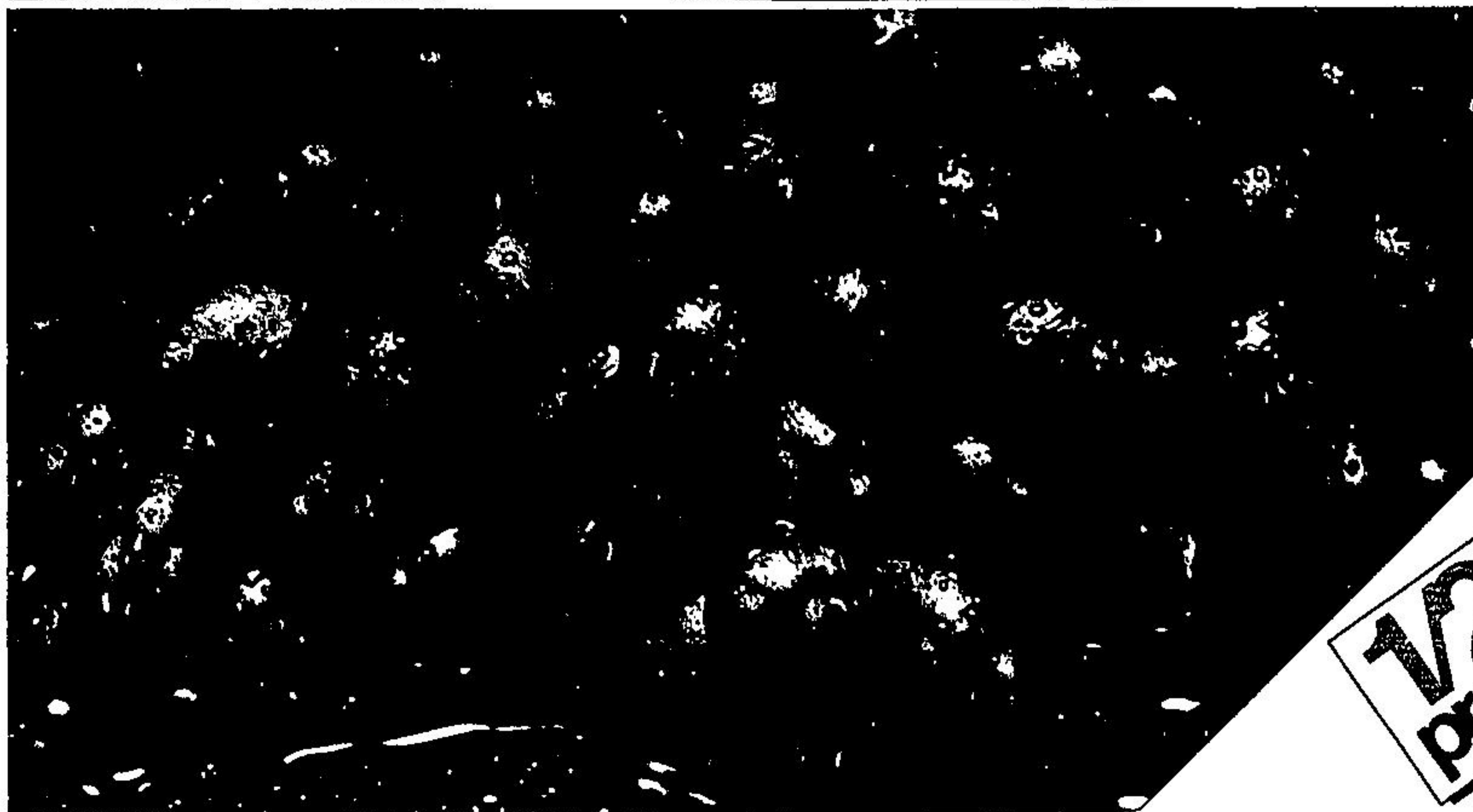
cut from
Canada
grade "A" beef
first 5 ribs

**prime rib
roasts**

2.68
lb.

was
~~3.28~~

Limit 2 roasts per family



produce
of U.S.A.

Emperor
variety **red**

grapes

was
~~1.18~~
lb. **59**
lb.

1/2
price



**Neilson
venetian
vanilla ice
cream**

1 L tub
all varieties

was
~~1.83~~

1.19
lb.

Loblaws

all prices in this insert are effective to Saturday December 27, 1980 inclusive