



# fresh lamb legs

whole, butt or shank portion

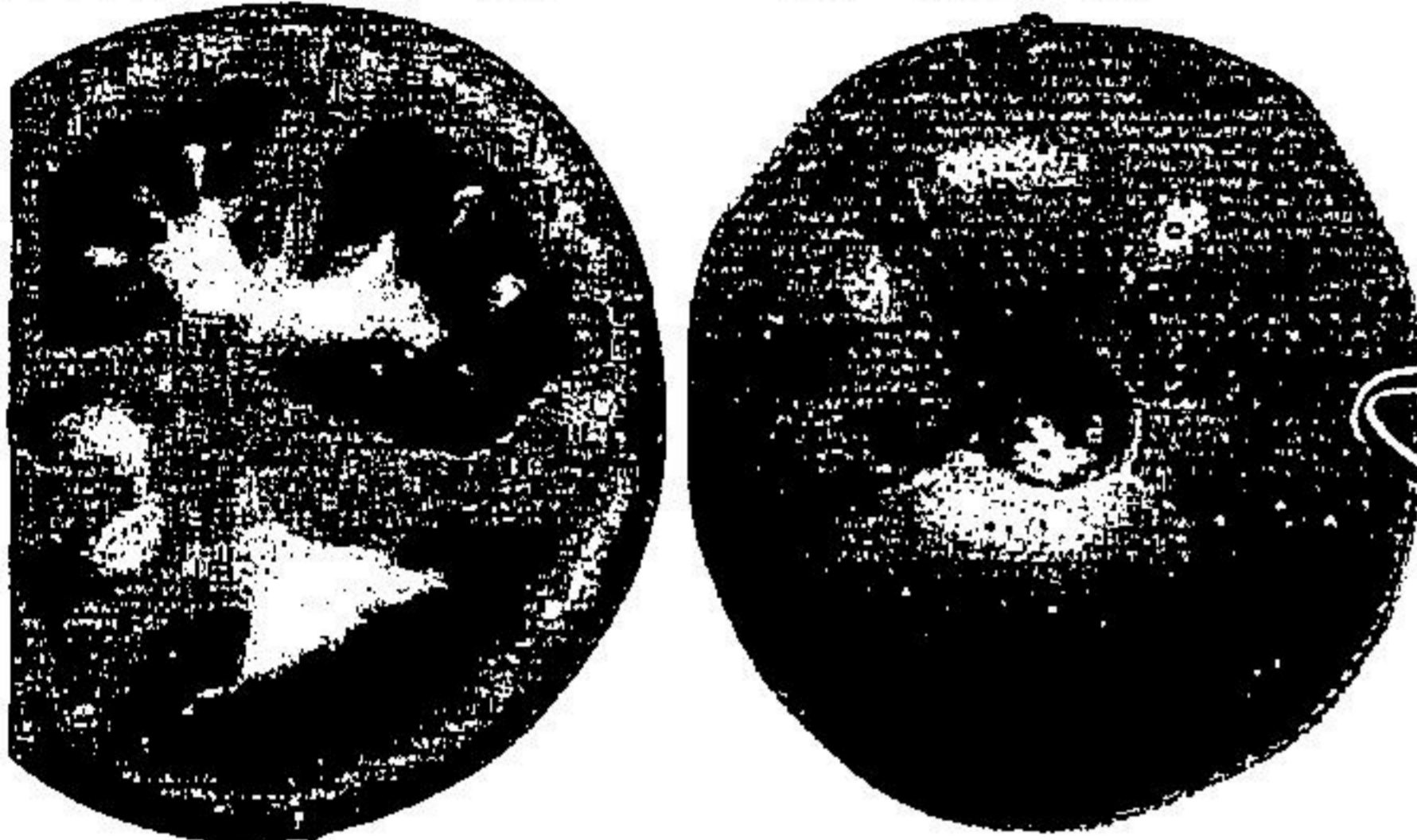
limited supply - shop early

IMPORTANT - limited supply - shop early

sale price **2.98** lb.

was 3.48 lb.

fresh lamb recommended by SCARSDALE DIET



# tomatoes

produce of U.S.A.  
no. 1 grade

sale price **.68** lb.



32 fl. oz. btle.

# Heinz keg o' ketchup

was 1.89

**1.39**

Goodtimes, 9 oz. old fashioned or 10 oz. tumbler, 20's poly bag plastic glasses 500 g box Nabisco shreddies Carnation, chocolate, strawberry or vanilla instant breakfast 8.04 oz. box automatic dishwasher powder Cascade detergent 65 oz. box powdered, laundry Oxydol detergent 6 L box powdered, laundry Bold detergent 6 L box Scotties, hankie pack all colours, (2 ply) facial tissues 2 100's box beef or Irish Armour stews 24 fl. oz. tin with pork in tomato sauce Van Camp beans 28 fl. oz. tin Armour corned beef 12 oz. tin McLarens, all varieties dill pickles 32 fl. oz. jar Bravo tomato paste 2 5.5 fl. oz. tin Dove white or pink toilet soap 140 g bath bar	3 oz. box all flavours jelly powders Jell-O Quaker, all varieties Harvest Crunch granola cereal 400 g box Post's, 400 g box Honeycomb cereal 2 kg poly bag Gaines, Select dog food Beatrice, all flavours fruit bottom yogurt 175 g cup Golden Country Shortcake, Oatmeal or Original Oatmeal Dad's cookies 400 g bag	was 1.05 <b>.89</b> was 1.15 <b>1.05</b> was 1.83 <b>1.73</b> was 4.17 <b>3.99</b> was 4.39 <b>4.19</b> was 4.39 <b>4.19</b> was .61 ea. <b>.99</b> was 1.79 <b>1.55</b> was 1.05 <b>.95</b> was 2.59 <b>2.39</b> was 1.35 <b>1.19</b> was .40 ea. <b>.73</b> was .76 <b>.67</b>	was .43 ea. <b>2.75</b> was 1.49 <b>1.35</b> was 2.09 <b>1.79</b> was 2.79 <b>2.49</b> was .61 <b>.51</b> was 1.69 <b>1.39</b>	Encore 8 oz. jar with chicory instant coffee Swift's Premium ham 1 1/2 lb. tin Swift's Prem luncheon meat 12 oz. tin automatic dishwasher powder Electrasol detergent 50 oz. box Bick's 1.5 L jar all varieties dill pickles (loose pack) McLarens, stuffed, manzanilla olives 20 fl. oz. jar	was 5.49 <b>4.99</b> was 4.99 <b>4.39</b> was 1.69 <b>1.49</b> was 2.89 <b>2.59</b> was 2.07 <b>1.77</b> was 2.19 <b>2.07</b>
--	--	---	---	--	--