

**RECREATIONAL VEHICLES**  
1978 Polaris TXL 340 Snowmobile, liquid cool engine, very good condition. Asking \$1,500. If interested call—853-1764 267845rv

**GARAGE SALES**  
**MOVING SALE**  
SUNDAY, NOVEMBER 9th 1 p.m. to 5 p.m. ONLY. EVERYTHING MUST GO. NO REASONABLE OFFER REFUSED.  
Toys, books, Toro gas mower, garden tools, sectional modern living room couch, household items, double bed, etc.  
55 STOCKMAN CRES. GEORGETOWN. ENTER SIDE PATIO DOORS. NOTHING SOLD BEFORE 1 PM.

**FOR SALE**  
**WEEKEND SPECIAL!**  
A new permanent feature from McNamara Jewellers. This Thursday, Friday, Saturday only.  
ALL DIAMOND RINGS 25% OFF  
McNamara JEWELLERS  
Downtown Georgetown 877-2481

**PIONEER SAW SALE**  
\$25.00 OFF AL'S MARINE  
ACTON 853-1682

**SNOW TIRES** E78-14 mounted on Dodge Dart rims, nearly new \$50, also other varieties — 853-1779 45fs

**CAST Iron Quebec wood stove** \$45.00. New commercial 7' in Black and Decker Sawsaw \$225.00. Must sell \$170.00. Utility trailer 10' with overhead rack \$200.00 — 853-1810 255445fs

**ONE pr. CCM skates, size 8** \$25.00 — 877-0023 255fs

**TEAK Dining table and buffet**, good condition \$75.00. Peregé carriage and playpen \$100 — 877-7422 266445fs

**MATERNITY clothes, baby's Snuggly (carrier) baby's swing scales, lamp, bunting bags, etc.** — 877-9243 45fs

**BROWNING Shotgun** highlighting model over and under, made in Belgium. Excellent condition — 853-0555 45fs

**BARGAIN Prices — Worm Supplies**. Call 822-2107 or 853-0918 45fs

**25% OFF ALL BAMBOO AT BAMBOO LOFT**  
Above Carpet Barn 877-1158

**JULIES CERAMICS & CRAFTS 25% OFF**  
ABOVE CARPET BARN 877-8689 255845fs

**CASH — Gold or Silver articles, military items, old coins, stamp collections, toys, cards, photos, etc.** Enquire 459-4903

**GIVE A COW A BREAK**  
Eat Fresh Rainbow Trout 10" to 12" long, individually packed, fresh \$21.00 per dozen. Smoked \$23.00 per dozen. Free delivery.  
877-3730

**NEWSPRINT ROLL ENDS**  
58¢ per lb. incl. taxes. Ideal for schools, table coverings, 1001 uses.  
THE HALTON HILLS HERALD (Front Counter)

**VACUUM Cleaner, good condition** \$65.00 — 877-9501 266945fs

**QUALITY 10 piece dining room suite, leather upholstered chairs, slate top server** 453-7014 after 5 p.m. 2665445fs

**PIANO (Heinz-Weber)** approximately 70 years old, excellent condition, best offer, 453-7014 after 5 p.m. 45fs

**ONE Family share in Georgetown Raquet Club.** Phone evenings after 8 877-9175 209545fs

**SNOWSUITS, winter coats** 20% off our regular very low prices. Wed. to Sat. only. Pen-niesworth Children's Consignment Shoppe. — 877-1242 269845fs

**PIANO good condition** \$325. or best offer — 853-2216. 270340fs

**EMPLOYMENT WANTED**  
**MATERIAL & PRODUCTION CONTROL SUPERVISOR**  
22 yrs. experience in all phases including E.D.P. Works well under pressure, will relocate if required. Please send applications to Box 37, C/O The Herald 45 Guelph St. Georgetown L7G 3Z6 ALL ENQUIRIES ANSWERED

**HOUSE SOL**  
45 Charles St. Georgetown, Ont.  
FROM NOV. 8 TO NOV. 27, 1980  
**MARJORIE NAZER**  
PAINTINGS, DRAWINGS, EMBROIDERIES  
**OZ PARSONS**  
CERAMICS.  
MEET THE ARTIST NOV. 8 2-6 PM  
GALLERY HOURS  
Tuesday to Thursday: 2 pm - 8 pm  
Friday to Sunday: 2 pm - 6 pm

**FESTIVAL OF MUSIC**  
ST. PAULS UNITED CHURCH  
30 MAIN ST. S. BRAMPTON, ONT.  
MON., NOV. 10th  
8:00 p.m.  
ORGAN RECITAL BY  
MR. JOHN H. TUTTLE  
MUS.B.F.A.G.O.  
ORGANIST BY ST. PAULS ANGLICAN, TORONTO UNDER THE SPONSORSHIP OF THE ONTARIO ARTS COUNCIL  
TICKETS  
\$3.00 - REGULAR  
\$2.00 - SENIOR CITIZENS & STUDENTS

**OVER 1000 DEALERS COAST-TO-COAST!**  
**Superior Muffler**  
ORIGINAL PURCHASER GUARANTEE  
Superior Muffler and/or Tailpipes and Exhaust Pipes are unconditionally guaranteed while the original purchaser owns the car. If the muffler and/or pipes installed fail, they will be replaced with no charge for replacement parts or labor.  
**THE LIFETIME GUARANTEE ALL MUFFLER COMPANIES WOULD GIVE YOU IF THEY HAD THE SUPERIOR PRODUCT.**  
NO WAITING FOR PARTS  
Your muffler, tailpipe and exhaust pipe are always in stock!  
CUSTOM PIPE BENDING • DUAL CONVERSIONS • HEADERS  
**Superior Muffler**  
**RICH'S SERVICE CENTRE LTD.**  
Hwy. 7 (East of Acton) 853-2940

**ELECT**  
**WHELAN, V. X**  
ON MONDAY, NOV. 10, 1980  
**TRUSTEE SEPARATE SCHOOL BOARD HALTON HILLS**  
"Accessible" "Approachable"  
"A Proven Record"

**FOR SALE**  
ALUMINUM storm doors, window awnings, canopies, patio doors, raincoats, shutters. Reasonable — 853-2895 40fs

**FIREWOOD** Hardwood dry & split, well delivered. Tullman's Garden Centre 853-2480 45fs

**VACUUM Cleaners, supplies and services.** Electrolux, Filter Queen, Kirby, Compact etc. — 877-9501

**WHY LOOK FURTHER?** If you are in need of wall units, assorted shapes of tables, and bookcases, either new (discounted seconds or discontinued lines), you'll be more than satisfied with our show room display. Open Mondays to Fridays, 9 a.m. to 5 p.m. — 877-6948  
Delta Crafts Ltd.  
90 River Dr. Georgetown

**SWIMMING POOLS** In-ground, must go on sale. 1980 above-ground pools complete with filter, motor, pump, walk-around patio, fencing. Regularly \$2395.00 reduced to clear at \$1479.00. Phone toll free 1-800-265-8343 for further details.

**Your Photofinishing And Camera Centre**  
**PHOTORAMA LIMITED**  
INSTANT PASSPORTS AVAILABLE!  
877-4588  
116 Guelph St., Georgetown, Ontario

**Papermate Calendar** and desk calendar — 877-3351 45fs

**SECTIONAL Bar**, almost new \$350.00 — 877-2758 weekends only 270040fs

**LARGE Teakwood desk**, brass handles \$95 — 838-2028 46fs47

**Erin Township Council ELECT... Councillor Jo Schneider FOR DEPUTY REEVE**  
On MONDAY NOV. 10th  
**Schneider, Jo X**



**RE-ELECT ED WOOD**  
REGIONAL COUNCILLOR Ward One (Acton)  
Some of the reasons E. Wood should be Re-elected:  
• He is sensitive to the needs and wishes of the Acton Community  
• He shares your concern as a taxpayer.  
• He lives and works right in the Acton community.  
• He believes in a closer scrutiny of budget expenditures.  
• He believes in sound municipal planning and controlled growth.  
• He believes that a greater share of the taxes collected should be spent in the Acton community.  
• He will schedule his time to represent Acton on a full-time basis.  
• He is the Best Candidate for the position of Regional Councillor, Ward One (Acton).  
**A Good Investment...Protect It! on MONDAY, NOV. 10th VOTE WOOD, E. X**

We invite You To Shop Anywhere And Compare... The Quality Of Our Kitchen-gems And The Savings...  
**FANTASTIC!**

**Kash's Karry Kitchens**  
HWY. 107 WEST OF HWY. 10  
NORBRAM CENTRE  
BRAMPTON 458-2943

**E. A. Mitchell** limited  
REALTORS • APPRAISERS  
MORTGAGES  
PHONE 451-6232  
44 Queen St. E. Brampton

**W & S CONSTRUCTION**  
• SUNDECKS & PATIOS  
• ADDITIONS & RENOVATIONS  
• GENERAL CARPENTRY  
QUALITY WORKMANSHIP  
877-1986 or 877-9874

**DELREX Aluminum Limited**  
Aluminum Awnings  
Eaves-troughs  
Siding  
Canopies  
Storm Doors  
Windows  
Soffits  
Fascia in Living Colours  
877-5383

**TWIN WINDOWS INC.**  
SAVE MONEY — SAVE ENERGY  
PRODUCTION & CUSTOM MADE WOODEN AND VINYL CLAD  
• WINDOWS  
• ENTRANCE UNITS  
• SLIDING DOORS  
• INSULATED WINDOWS  
877-9332  
453-1388  
79 MOUNTAINVIEW RD. N.

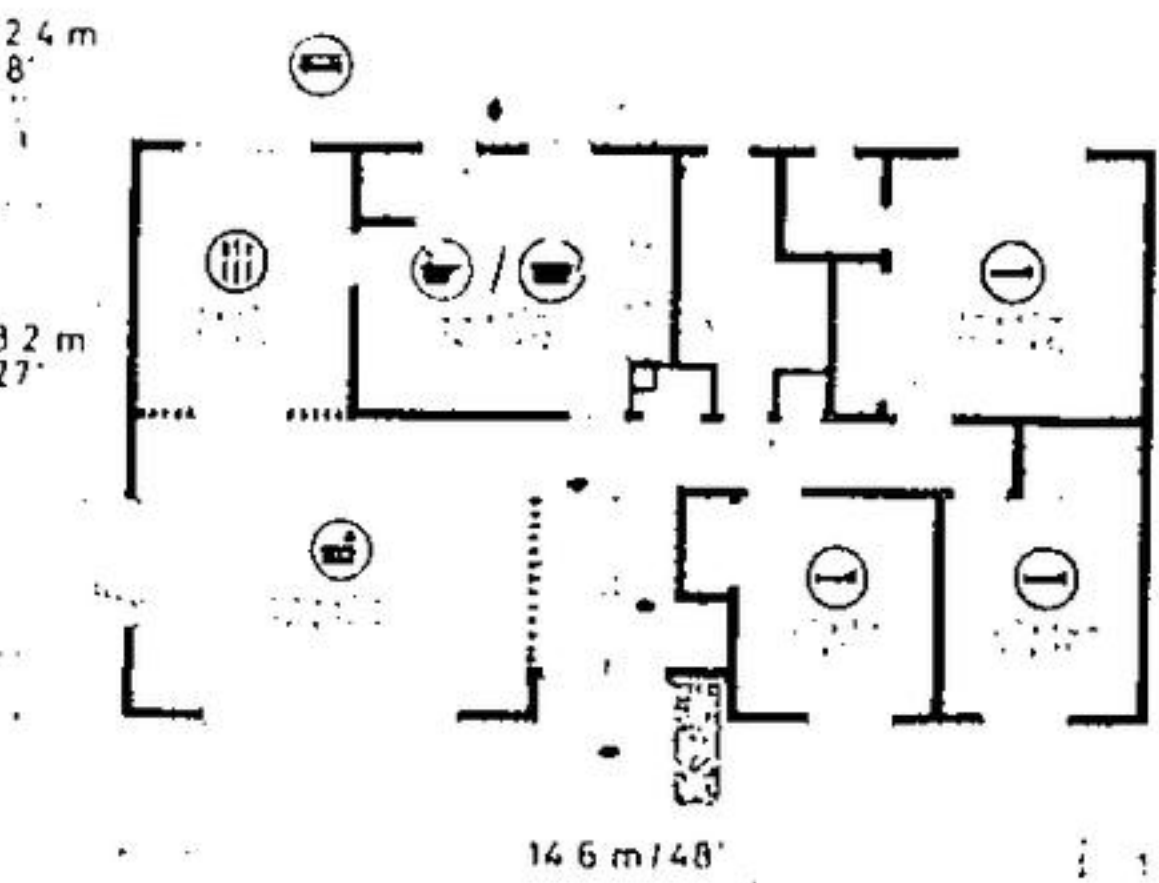
**DAVE WILLIAMS**  
ELECTRIC & HEATING  
Industrial, Commercial and Residential Wiring  
• Planning & New Installations  
• Heating & Air Conditioning  
• Maintenance  
877-3322  
R.R. 1 - GEORGETOWN

**CUSTOM FABRICATIONS**  
Specializing in: Industrial and Commercial Office Renovations  
RESIDENTIAL Interior Alterations & Renovations  
Quality Craftsmanship — Free Estimates —  
877-1485 or 877-0288

**HOME OF THE WEEK**



PLAN NO. 70-1278  
148.7 m<sup>2</sup> # 1278 sq ft / pi<sup>2</sup>  
14.6 m # 48 ft / pi



**SPLIT ENTRY TUDORESQUE HOME WITH CHARM & CONVENIENCE**

The exterior charm of this three-bedroom Tudor design is created through the use of brick veneer, stucco, board and batten, cedar shakes and ornamental trim and leaded glass windows. The design will appeal to the tradition-minded homeowner, and will be as much "in style" in twenty years as it is today. The plan is well suited to the medium frontage residential building lot and contains almost 1,300 square feet of well-arranged finished floor area, for present use, and allows for as great an area in the unfinished basement level, for future development.  
Panelled double doors open into a split stairway entrance foyer; the righthand stair leading down to the unfinished lower level and the left leading up to the main living level. The main landing leads traffic naturally to the left and into the spacious living room, which features a fieldstone-veneered masonry fireplace and a beamed ceiling. The latter carries forward the Tudor theme of the design and complements the entire upper level. An optional spindle screen separates the living room and the formal dining room, this increasing the sense of spaciousness.  
The L-configuration kitchen-nook combination could be decorated in "country-style" in keeping with the overall theme of the design. Pocket doors are used for privacy, convenience and space-saving. The kitchen-nook may be completely isolated for privacy and hygiene. An exterior door opens onto an upper level balcony and the rear garden prospect.  
All three bedrooms are grouped around the twin-vanilled central bathroom and linen storage facility, and are positioned well away from the main entertaining area for freedom from disturbance. All bedrooms have generous closet storage and excellent natural light. The master bedroom has a two-piece ensuite bathroom for greater convenience.  
The unfinished lower level contains roughed-in plumbing for a downstairs bathroom, and a roughed-in fireplace for the downstairs recreation room. Here, there is adequate space for the development of additional bedrooms and/or other living accommodations.  
The double carport could easily be enclosed to create a spacious garage and storage area, for those families which require security and extra storage capacity.  
Plans for design No. 70-1278 may be purchased either by the single set, at a cost of \$95.00 for the first set and \$20.00 for each additional set, or by the package. A five-set plan package, including the first set, is economically priced at \$145.00 and an eight-set package, also including the first set, is only \$175.00.  
Whichever method you choose, please include \$5.00 for postage and handling.  
Send for the current edition of Select Home Designs magazine, series 46, featuring imaginative decorating and home improvement ideas, plus 250 quality home plans of every type. Available for \$2.75 (\$2.00 plus .75 cents postage and handling).  
To order any of these items please send cheque or money order payable to the Home of the Week, c/o The Herald, Suite 201, 881A Jane Street, Toronto, Ontario, M6N 4C4.

When Winter Comes... Lower Your Rising Heat Bills with the  
**Timberline**  
FIREPLACE INSERT  
A Timberline fireplace insert turns your fireplace into a furnace.  
See our complete line of fireplaces and stoves.  
The Georgetown Stove & Fireplace Co.  
877-8213  
348 Guelph St. - Georgetown

**Michael Fobert**  
CARPENTRY SERVICE  
• Renovations • Additions  
• Basement Rooms  
• Design Ideas  
• Sundecks Our Specialty  
QUALITY WORKMANSHIP — FREE ESTIMATES —  
Ask For Mike 877-1547

**MR. SLEEP**  
Beds - Swivel Rockers  
Chesters - Mattresses  
**BIG SELECTIONS SAVINGS**  
456-0304  
Eastown Plaza, Corner of Queen & Kennedy, Brampton  
FURNITURE and SLEEP SHOP

**TEC-1000 TILE**  
• RESIDENTIAL • COMMERCIAL • INDUSTRIAL  
• EXPERTS IN CERAMIC TILE FOR FLOORS & WALLS  
• 7 YEARS EXPERIENCE  
• FREE ESTIMATES  
853-1159  
877-4780

**BORLAND PAINTERS & DECORATORS**  
FREE ESTIMATES  
• Workmanship Guaranteed  
• High Quality Paint and Wallpaper  
• Competitive Prices  
877-1101

**DRIVE A LITTLE SAVE A LOT...AT LUMBER LAND**  
WHOLESALE & RETAIL  
THIS WEEK'S MINI SPECIALS

**WALL PANELS**  
Large Section Starting As Low As \$4.98 AND UP  
**CERAMIC TILE**  
Large Section Starting As Low As 75¢ SQ FT. AND UP  
453-6374  
HIGHWAY No. 10 BRAMPTON  
Just West of No. 10

**BULLWISE WINDOWS and DOORS**  
THE PLACE TO SAVE!  
Special Prices on House Lot Qualities  
Hwy. No. 7 (Side) 336 Guelph St. GEORGETOWN (East) 877-1186

**CARPET SHACK**  
CARPET & VINYL FLOORING  
IMPOSSIBLE TO PAY MORE — Whether our experts do the work or it's a do-it-yourself project!  
• First Quality • Remnants • Mill Ends  
• Long or Short Rolls  
Corner of Kennedy & Strafford  
Brampton — 457-7787  
320 Steeles, Milton - Div. of Syers Flooring 878-4178