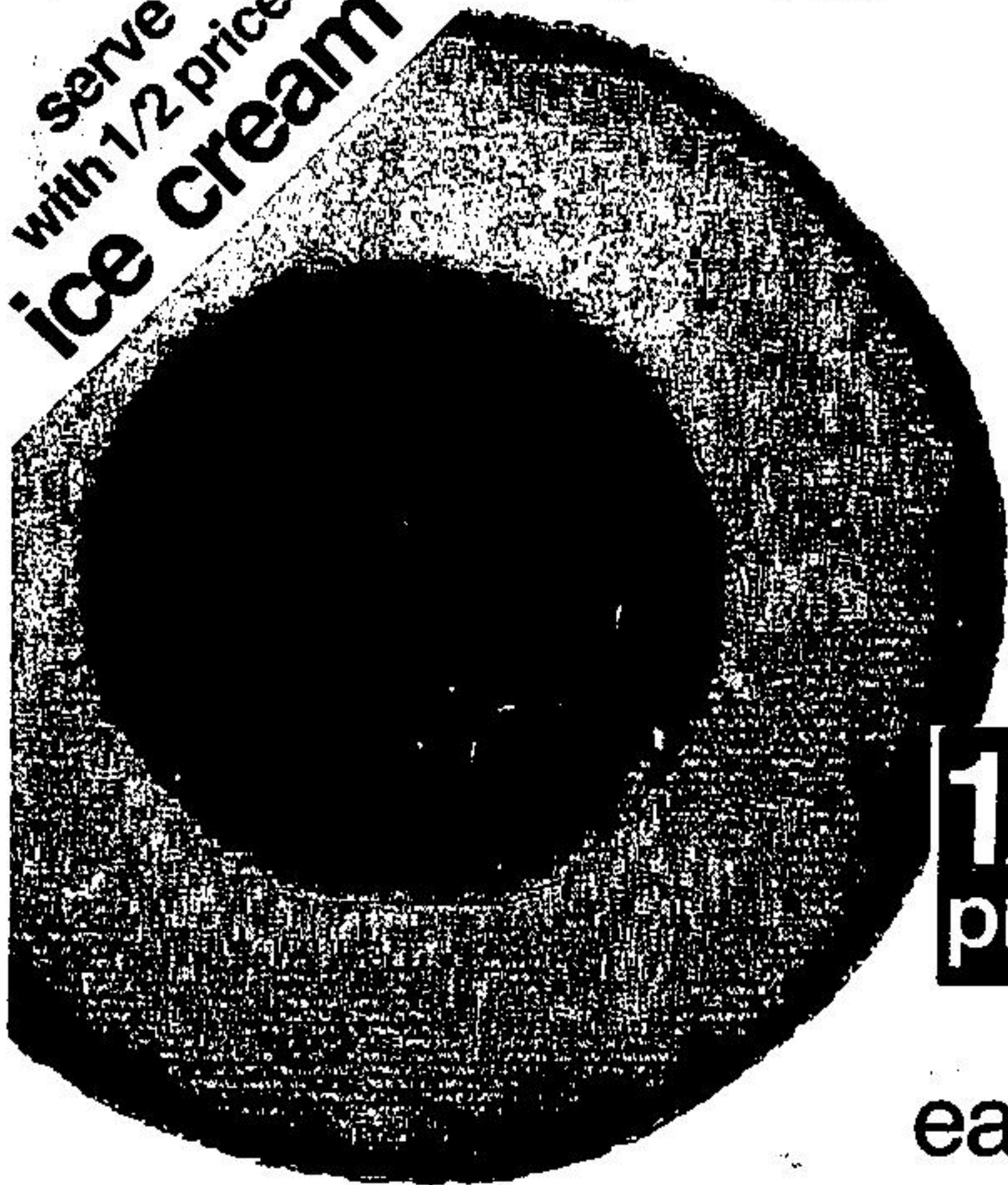


serve
with 1/2 price
ice cream



produce
of U.S.A.
no. 1 grade

was
~~1.18~~

canta-
loupes

1/2
price

ea.

59

grocery
values

Nelson regular or California iced tea mix	36 oz. tin	was 3.49 3.19
Nabisco spoon size shredded wheat	675 g box	was 1.29 1.19
Blue Bonnet (2 x 8 oz. tube) soft margarine	18 oz. sieve	was 1.09 .99
Weston sesame sliced crusty bread	24 oz. loaf	was .79 .73
Weston cinnamon scones	4's pkg.	was .90 .83
Carnation 2% partly skimmed evaporated milk	385 mL tin	was .51 .49
Total Diet dry dog food	2 kg bag	was 2.75 2.49
Kal Kan luxury all varieties cat food	13 oz. tin	was .59 .54



California grown
no. 1 grade

was ~~.88~~ lb.

bartlett
pears

lb.

69

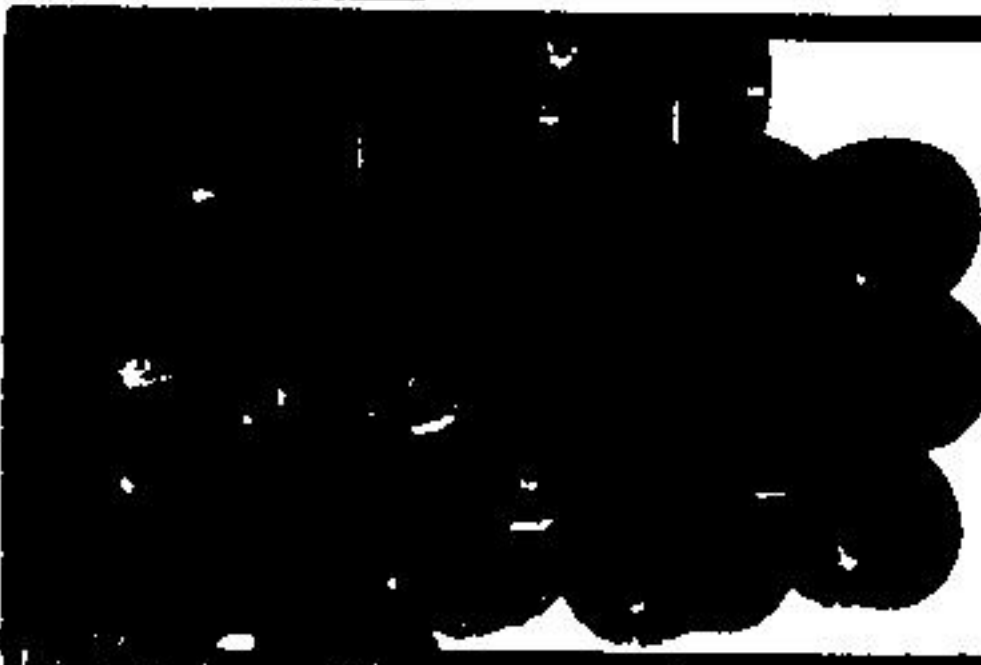


produce of U.S.A.
summertime treat.

was ~~2.88~~

whole
water
melon

248
ea.



produce of U.S.A.
sweet eating

was ~~1.78~~ lb.

red
grapes

lb.

99