

pork side  
**fresh spare ribs**  
 our everyday low price lb. **1.68**  
 or previously frozen

lb. **99**



whole, shank or butt portion  
**fresh spring lamb legs**

our everyday low price  
 lb. **3.48**

**2.98**  
 while supplies last please shop early



shoulder  
**fresh spring lamb chops**

our everyday low price  
 lb. **3.18**

**2.98**  
 lb.



neck, shank, breast or flank - spring lamb  
**fresh lamb for stewing**  
 our everyday low price lb. **1.38**

**98**  
 lb.



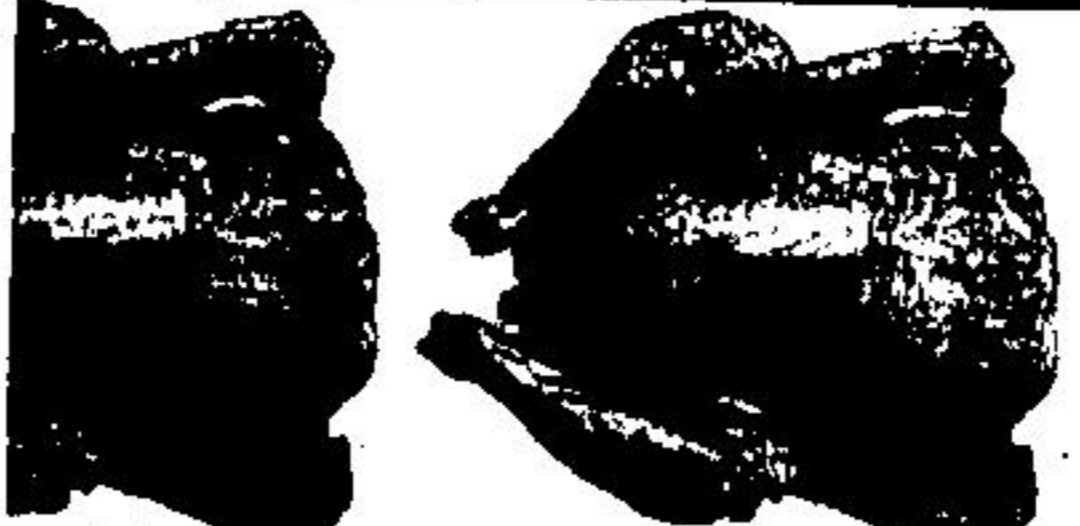
partly skinned whole or shank portion  
**cooked smoked ham**  
 our everyday low price lb. **1.18**

**88**  
 lb.



spring lamb  
**fresh loin lamb chops**  
 our everyday low price lb. **4.18**

**3.98**  
 lb.



grade A frozen prodressed  
**rock cornish chickens**  
 our everyday low price lb. **1.68**

**1.48**  
 lb.