

rib steaks

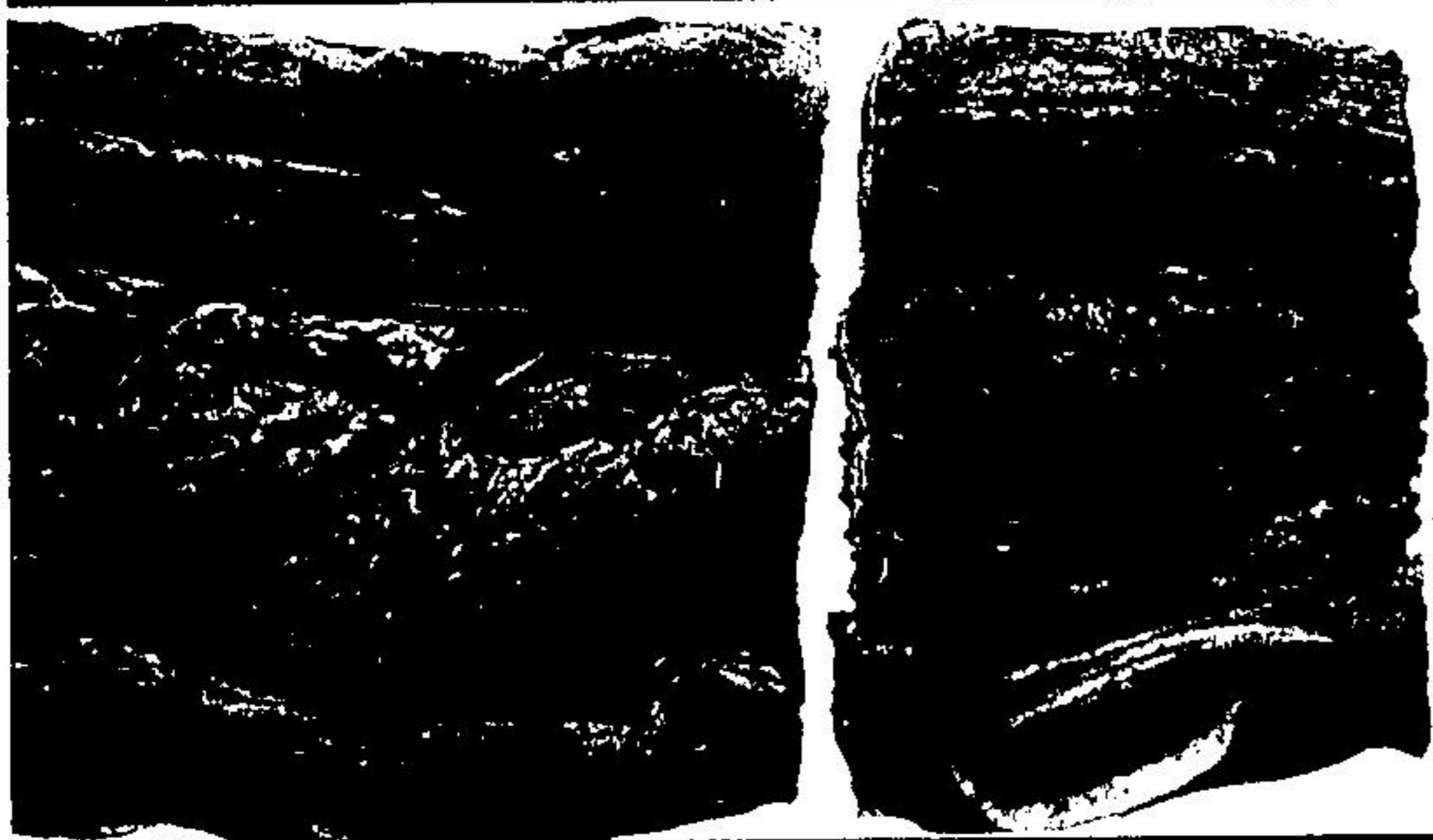
ideal for
barbecuing

cut from Canada
grade
'A'
beef

our everyday
low price

~~3.28~~ lb.

2.28

 lb.

cut from
Canada grade 'A' beef
(ideal for braising
or barbecuing)

beef bone in
short ribs

our everyday
low price ~~1.68~~ lb.

1.15

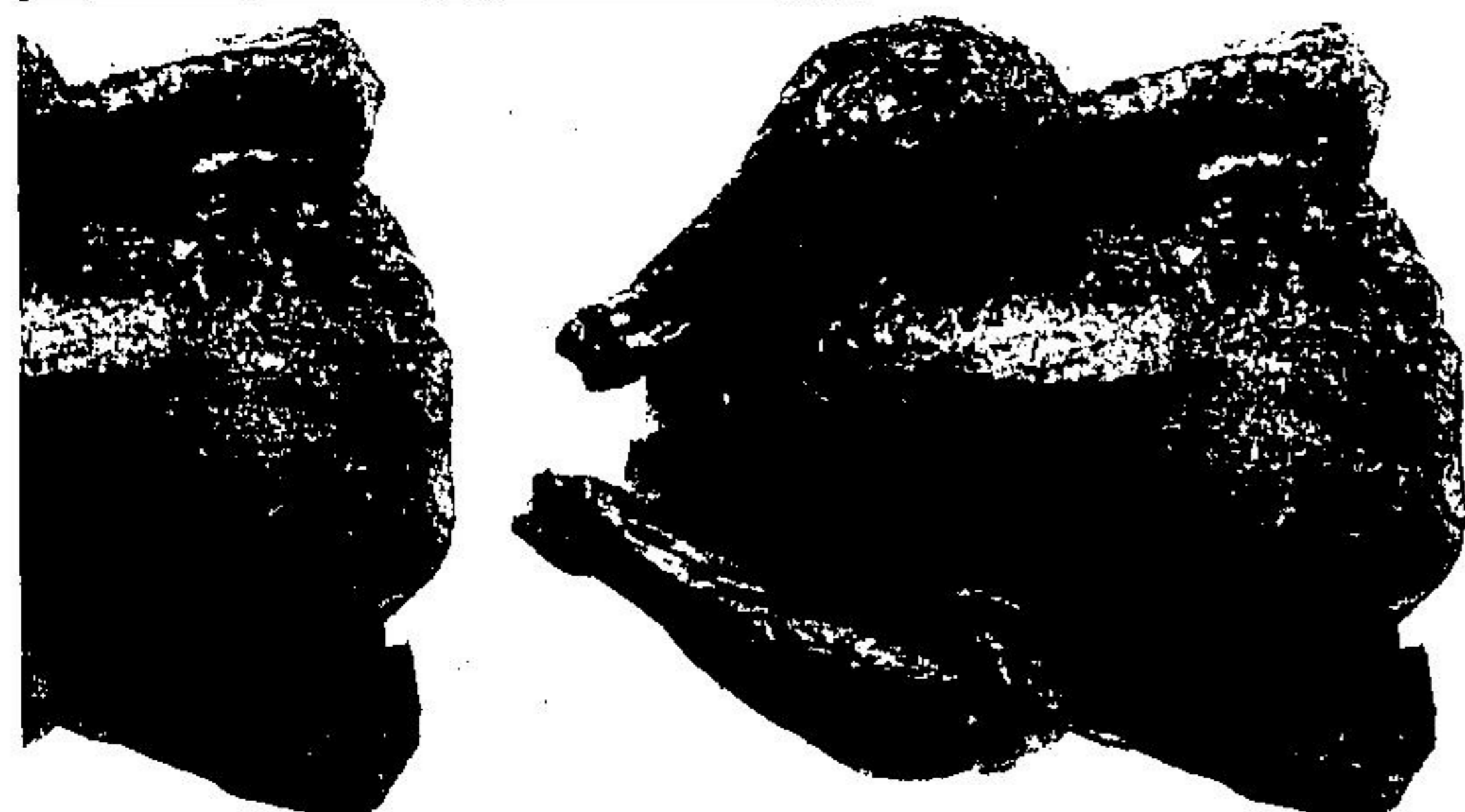
 lb.

frozen
New Zealand

**whole
lamb legs**

our everyday
low price ~~2.08~~ lb.

1.78

 lb.

frozen predressed
grade 'A'

**rock
cornish
chickens**

our everyday
low price ~~1.68~~ lb.

1.48

 lb.