

fast meals



cut from
Canada grade "A" beef
tenderized
**sirloin tip
cube steaks**

our everyday
low price **3.58**
lb.

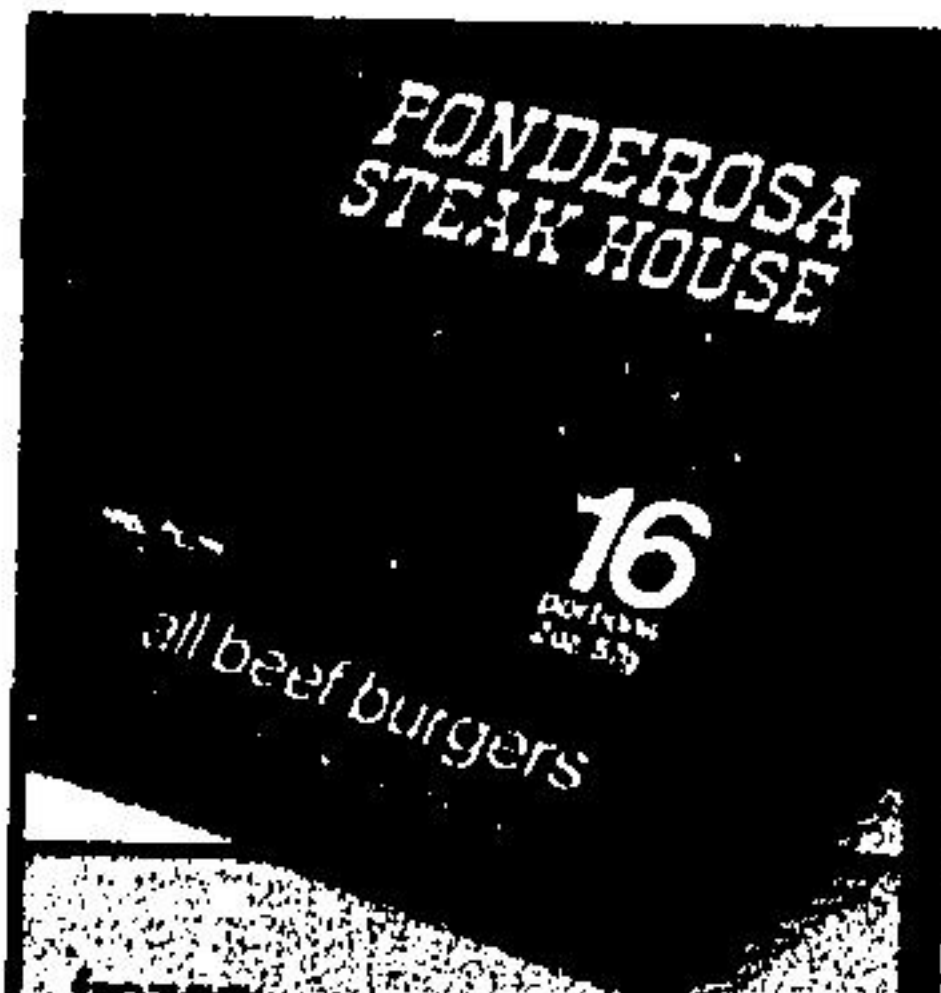
3.18
lb.



cut from
Canada grade "A" beef
thin sliced
inside round
rouladen

our everyday
low price **3.68**
lb.

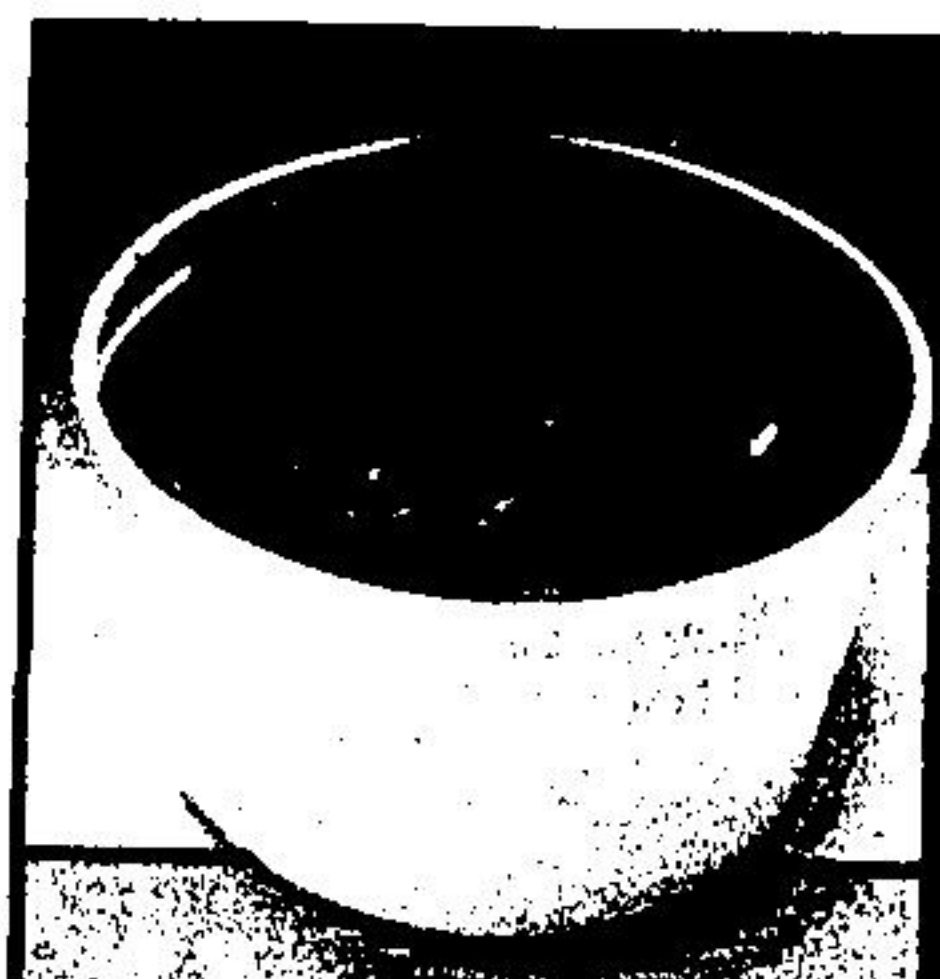
3.28
lb.



frozen
Ponderosa Steak House
**all beef
burgers**

our everyday
low price **3.78**
2 lb.
pkg.

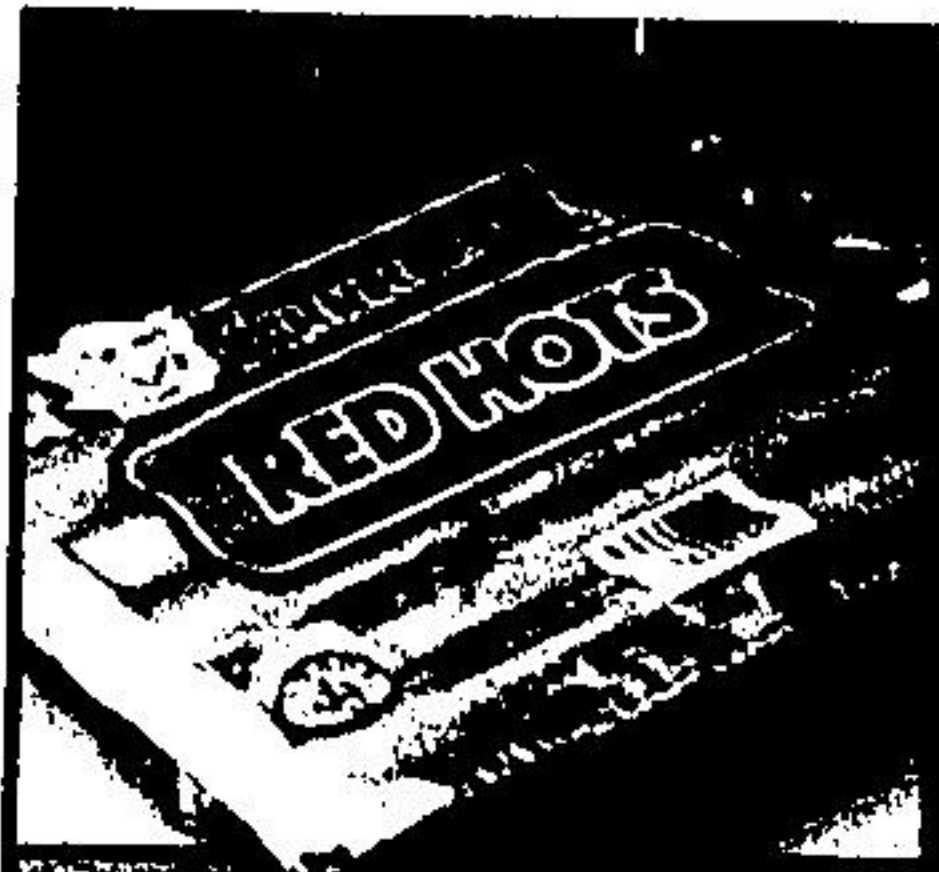
3.48
2 lb.
pkg.



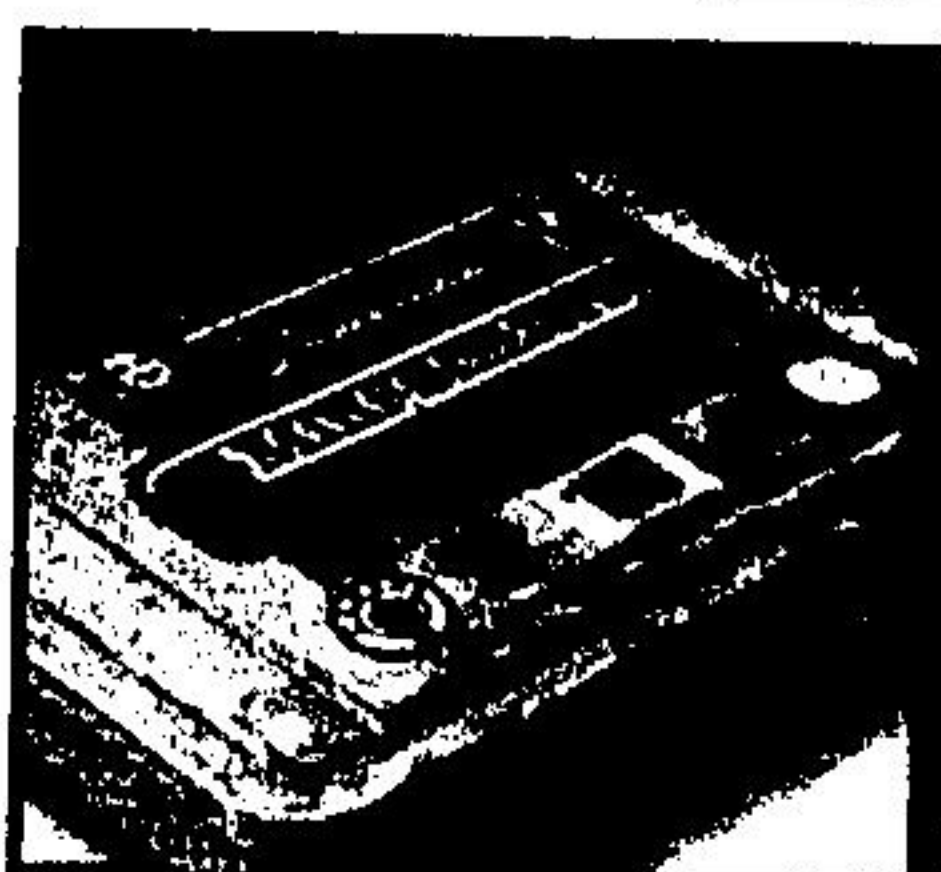
previously frozen
**sliced
beef liver**

our everyday
low price **1.28**
lb.

98
lb.



Loblaw's
Red Hot
all beef
salami chubs



Loblaw's
Schnitzel
beef steaks



Loblaw's
**Beefsteak &
Vegetable Pie**



Loblaw's
**Quarter
Pound**
Schnitzel

Loblaws
all beef
salami chubs

600 g
each **2.59**
was 2.94

Loblaws sliced
regular or
all beef bologna

375 g pkg.
each **1.38**

Loblaws

"was" prices in this supplement refer to Loblaws regular selling price

Prices in this supplement
effective to Tues. May 6
except bakery effective to
Sat. May 3, 1980.
Stores reserve the right
to limit quantities.