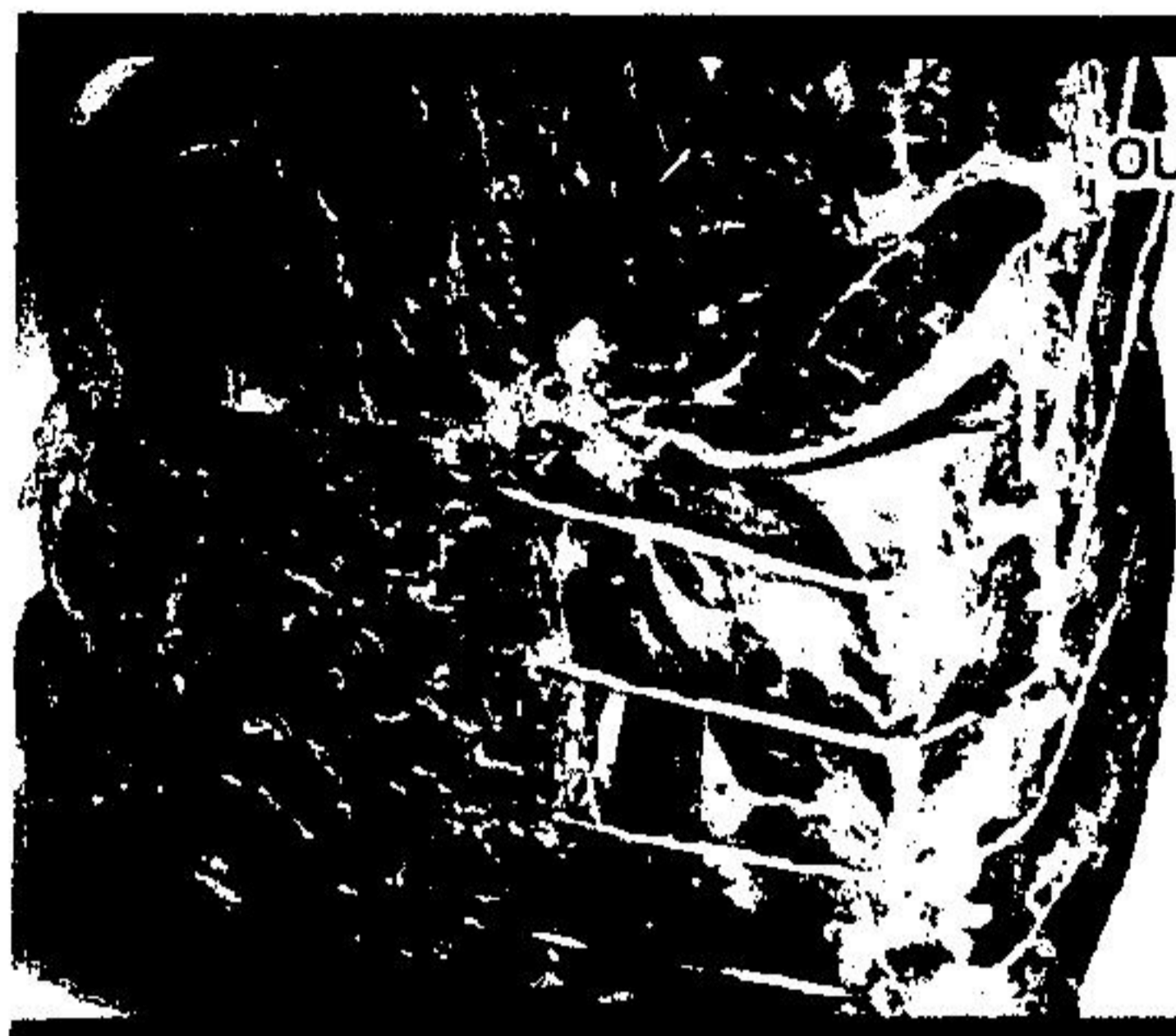


reason
no. 1

why you should
switch to Loblaw's

beef



our everyday low price lb. ~~2.08~~

cut from Canada grade 'A' beef
blade bone removed

**blade
roasts**

1.26
lb.



our everyday low price lb. ~~2.08~~

cut from Canada grade 'A' beef

**chuck
short rib
roasts**

1.26
lb.



our everyday low price lb. ~~2.68~~

cut from Canada grade 'A' beef

**boneless
cross rib
roasts**

1.86
lb.



our everyday low price lb. ~~2.28~~

cut from Canada grade 'A' beef

**boneless
shoulder
roasts**

1.86
lb.