

YBC Tramps lead Troublemakers and Rollers ahead of Challengers

Play-offs have started in the YBC and in the bantam division the season's leaders are battling it out for the Georgetown Bowl championship. The girls team "Striking Strollers" have really mastered the boys team "Challengers", 3,211 to 2,791. The juniors are having a see-saw battle with the boys team "Tramps" leading the girls "Troublemakers", 3,212 to 3,133. In the seniors, the No. 1's and the "No Names" were

bowling the season's standing tie-breaker to decide the leaders with the "No Names" taking the undisputed decision. For the pee-wee playoffs the leaders in the boys section are: Nicky Varricchio 608, Jeffrey Larsen 605, Jamie Priddle 598, Scott McCallum 586, Ian Wilkes 581, and Gordie Burke 584. The leading girls are: Tracy Weeks 659, Tracy Ball 653, Tara Leavitt 580, Christina Lane 559, Kim

Watts 556 and Erica Booth 543. The "No Docherty" team, of the Fri-Niter's League, increased its lead to 142 pins in the "A" division annual play-downs. In this second of a three day set, Henry Goulet was the team leader by rolling 660, his best triple of the year in league play (99 pins over average). The Nifty Nighters' team is in second place. In the consolation series, the "Shy Ones" finally pulled

ahead of the "Yo-Yo's" with a terrific 1,341, with all players bowling over 200 and Brad Smith 285. This moved them into a comfortable lead of 242 pins going into the final day of the play-offs next Friday. High Scores: Doug Hartley 701(274), Geo. Wrigglesworth 674(249), Henry Goulet 669(243), Brad Smith 667(285), Dave Corbett 637(251), Karen Smith 600(219), Keith Mills 590(242).

YBC HIGH SCORES
Bantams: Philip Hughes has set a new standard for the boys to shoot at by bowling a 632 triple, the highest game being 257. David Hicks 539(220), Mark Miller 524(185), Barry McLean 502(193), Ron Campbell 462(206), Karen Doyle 522(243), Sandra Weeks 503(202), Debbie Pentesco 495(173), Tracie Peggie 490(214), Cindy Kavanagh 482(180), Michelle Webster 465(172), Julie Cote

426(153). Juniors: Anthony Larsen 642(221), Steve Lucas 552(195), Julie McCorry 623(214), Kelly McCorry 592(215), Karen Humphreys 583(196), Teresa Maslach 566(216), Sabo 553(210). Seniors: Jerome Stone 714(273), Dwayne DeCoste 830(329), Len Fisher 640(229), Grant Richardson 618(252), Al Stennett 613(234), Gerry Bos 605(227), Diane Leonard 752(321).



Hwy. No. 7 (SOUTH SIDE) 336 Guelph St. GEORGETOWN (EAST SIDE) 877-1186
THE PLACE TO SAVE!
Special Prices on House Lot Qualities

HOME OF THE WEEK

CARPET SHACK

CARPET & VINYL FLOORING

IMPOSSIBLE TO PAY MORE - Whether our experts do the work or it's a do it yourself project.

- First Quality • Remnants
- Mill Ends
- Long or Short Rolls

Corner of Kennedy & Stratford
Brampton 457-7767
320 Steeles, Milton Div. of Syers Flooring



878-4178

E. A. Mitchell
LIMITED
REALTORS • APPRAISERS
MORTGAGES
PHONE 451-4232
44 Queen St. E., Brampton

BRUCE PURCELL

Specializing in:
• Acoustics, Drywall
• Lathing, Taping
• Texture Spraying

Residential & Commercial

FREE ESTIMATES

853-0305

Lower Your Rising Heat Bills WITH THE



FIREPLACE INSERT

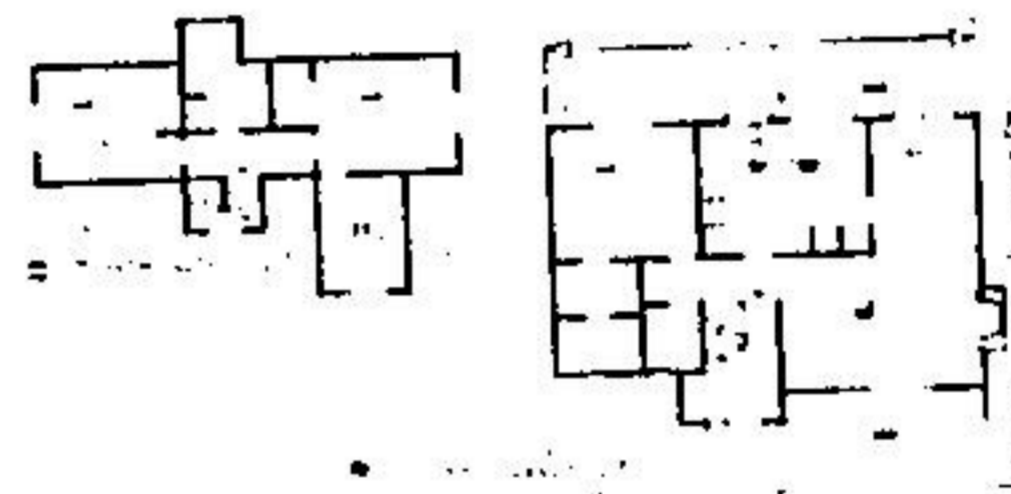
A Timberline fireplace insert turns your fireplace into a furnace

See our complete line of fireplaces and stoves

The Georgetown Stove & Fireplace Co.

877-8213

348 Guelph St. - Georgetown



TRI-LEVEL SPLIT ENTRY IDEAL FOR NARROW LOT

This sophisticated three bedroom home design is perfectly suited to the narrow frontage residential building lot and contains over 1,400 square feet of finished floor area, for present use, and more than 1,000 square feet of unfinished floor space on the lower level for future development. The charming, rustic-toned exterior, finished in mixed horizontal and vertical channel siding, brick veneer accents and chimney, and with upper level dormers and heavy shake roof, bears a strong resemblance to the mountain chalets and country cottages of Europe.

The elevated, weather-sheltered main entry leads into a compact reception foyer and outerwear storage area which faces twin hall stairways: the left hand one leading down to the lower, un-finished level, the right hand one leading up to the main living levels. The main landing leads traffic naturally right, into the large L-shaped living-dining room combination. The living room features a cat-levered-hearth masonry fireplace and wide sliding glass doors leading onto the front-facing balcony. The dining area separates from the kitchen-dinette via convenient pocket door, and connects to a wide rear-facing balcony via sliding glass doors.

The well-planned L-shaped kitchen-dinette combination has an excellent work triangle configuration, ample countertop work surface and abundant cupboard storage. The dinette area provides adequate space for the utilization of standard dining room furnishings, but invites the custom installation of banquette-style nook furnishings so popular in homes today. The kitchen-dinette may be totally isolated via pocket doors for privacy and hygiene.

The large master bedroom is positioned on the middle level for privacy and convenience. It has a full walk-in closet and a three-piece ensuite bathroom with tub, both of which separate

via space-saving pocket door. A two-piece vanity bath for guest convenience is positioned immediately to the left of the main stairway.

The third level contains the two secondary bedrooms, a second bathroom with tub, and a generous enclosed storage area above the living room. This area would make an excellent office or study area for the family which has children still at school.

The un-finished lower level provides abundant space for the future development of additional bedrooms or recreation room, depending upon individual family requirements and preferences. The area contains a roughed-in fireplace, and roughed-in plumbing for a downstairs bathroom.

A double enclosed garage with adequate space for the installation of a workbench for the home handyman completes the convenience features of this eye-appealing and well-thought-out narrow lot design home.

Plans for design No. 80-1456 may be purchased either by the single set, at a cost of \$85.00 for the first set and \$14.00 for each additional set, or by the package. A five-set plan package, including the first set, is only \$150.00.

Whichever method you choose, please include \$5.00 for postage and handling.

Send for the current edition of Select Home Designs Magazine, Series 44, featuring imaginative decorating and home improvement ideas, plus 320 quality home plans of every type. Available for \$2.75 (\$2.00 plus .75 cents postage and handling).

To order any of these items send cheque or money order payable to the Home of the Week. Address to: Home of the Week, c/o The Herald, Suite 201, 881A Jane Street, Toronto, Ontario, M6N 4C4.

GORD HAMILTON'S CUSTOM CARPENTRY

• Custom Homes
• Additions, Renovations
• Commercial Building

Heat Conservation & Priority

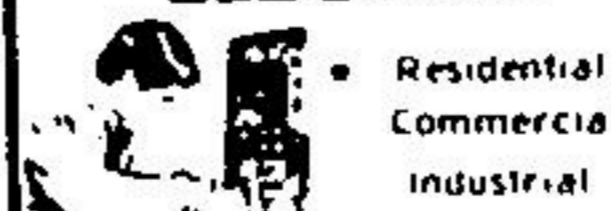
1-519-833-9857

(Call Collect)

877-3144

THIS SPACE RESERVED FOR YOUR AD

RAMROCK ELECTRIC



• Residential
• Commercial
• Industrial

Wiring & Rewiring of New & Existing Homes

ALL PHASES OF ELECTRICAL WORK
FREE ESTIMATES

Bus. 846 0526 Res. 877 7708

SAVE APPROX. 20% ON



DECORATING FUN

Georgetown Market Centre
877 4942

DELREX Aluminum Limited

Aluminum Awnings
Eavestroughs
Siding
Canopies
Storm Doors
Windows
Soffit
Fascia in Living
Colours

877-5383

Michael Fobert
CARPENTRY SERVICE

Renovations • Additions
• Rumpus Rooms
• Design Ideas

QUALITY WORKMANSHIP
FREE ESTIMATES

Ask For Mike 877-1547

FORD BROTHERS

A complete line of Swifts Foods

• FENCE SUPPLIES
• FARM FERTILIZER
• LAWN & GARDEN SUPPLIES & SEED
• PURINA DOG AND CAT FOOD
• MASTER HORSE FEED

877-2008

BALLINAFAD

MR. SLEEP

Beds - Swivel Rockers
Chesterfields - Mattresses

BIG SELECTIONS SAVINGS

456-0304

Eastown Plaza Corner of Queen & Kennedy
Brampton

SLEEP SHOP