

Hwy. No. 7 (SOUTH SIDE) 336 Guelph St.  
GEORGETOWN (EAST SIDE) 877-1186

THE PLACE TO SAVE!!

Special Prices on House Lot Quantities

# HOME OF THE WEEK

## CARPET SHACK

### CARPET & VINYL FLOORING

IMPOSSIBLE TO PAY MORE —  
Whether our experts do the work or it's a do-it-yourself project.

- First Quality • Remnants
- Mill Ends
- Long or Short Rolls

Corner of Kennedy & Stratford  
Brampton - 457-7767  
320 Steeles, Milton - Div. of Syers Flooring



878-4178



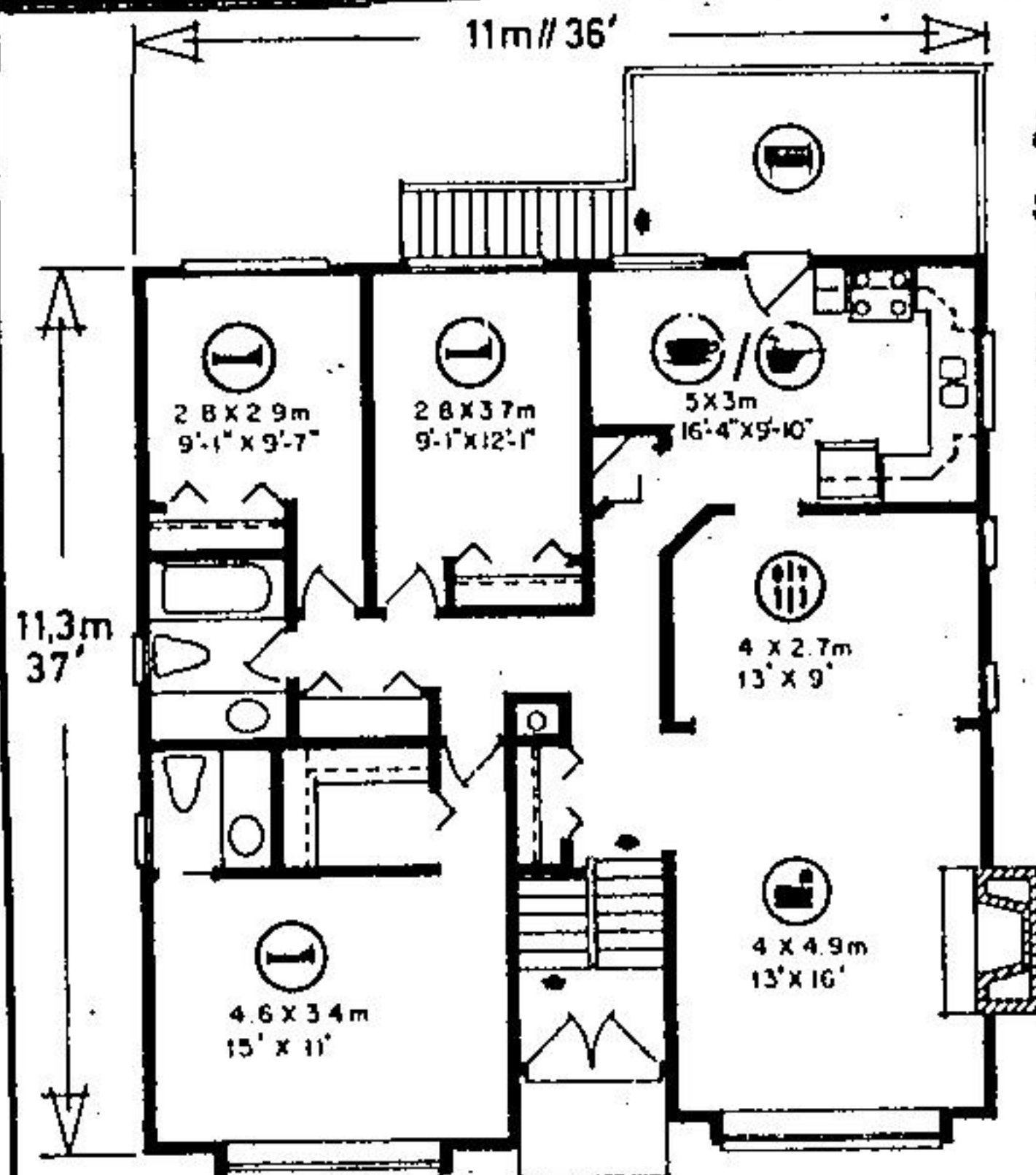
**E. A. Mitchell**  
LIMITED

REALTORS • APPRAISERS  
MORTGAGES

PHONE 451-6232

44 Queen St. E., Brampton

THIS  
SPACE  
RESERVED  
FOR  
YOUR  
AD.



PLAN N°80-1310

⊙ : 121.7m<sup>2</sup> // 1310sq ft. / pi<sup>2</sup>

⊙ : 11m // 36ft. / pi

### SPACIOUS SPLIT ENTRY FOR NARROW BUILDING LOT

Here's a stately and imposing home design of the highly popular split entry type which is perfectly suited to the very narrow frontage urban residential building lot, but which contains over 1,300 square feet of logically planned living space, for present use, and almost as great an amount of space for future development, in the un-finished lower level. The mixed horizontal and vertical channel siding of the exterior, in combination with the small-paned partial-bay windows, presents an impressive, almost nautical facade which is eye-catchingly different. The brick veneer accents and chimney lend a solidly traditional tone to the exterior, which is reminiscent of the traditional English cottage.

The weather-protected, rustic-toned entry leads into a compact reception foyer, which faces the twin half stairways — the left hand one leading down to the un-finished lower level, the right hand one leading up to the main living area. The main landing has spacious outerwear storage facilities on the left, and then traffic moves naturally right into the long rectangular living-dining room combination. The living room features a cantilevered-hearth masonry fireplace for convivial "at-homes", and a projecting, partial-bay window with small panes for charm and privacy. The separate dining area has abundant space for the utilization of a full-sized dining suite and a china storage hutch.

A well-planned U-shape kitchen-dinette combination offers a step-saving work triangle, generous cupboard storage and ample countertop work surface. The dinette area invites the custom installation of built-in banquette-style nook furnishings for charm and convenience. A rear-facing balcony is easily accessible from both areas, for easy access to casual outdoor dining in fine weather.

All three bedrooms are positioned around the central bath and linen storage area, and well away from the main entertaining area for freedom from disturbance. Each has a generous closet storage and excellent natural light. The master suite has a full walk-in closet, a two-piece vanity ensuite and a wide, projecting, partial-bay window.

The un-finished lower level provides abundant space for the future finishing of additional bedrooms, or recreational and entertainment facilities, according to specific family tastes and preferences. It has roughed-in plumbing for a three-piece bathroom, and a roughed-in second fireplace for the projected recreation room.

Plans for design No. 80-1310 may be purchased either by the single set, at a cost of \$85.00 for the first set and \$14.00 for each additional set, or by the package. A five-set plan package, including the first set, is economically priced at \$120.00 and an eight-set package, also including the first set, is only \$150.00.

Whichever method you choose, please include \$5.00 for postage and handling. Ontario residents add 7 per cent sales tax.

Send for the current edition of Select Home Designs magazine, Series 44, featuring imaginative decorating and home improvement ideas, plus 320 quality home plans of every type. Available for \$2.75 (\$2.00 plus .75cents postage and handling).

To order any of these items please send cheque or money order payable to the Home of the Week. Address to: Home of the Week, c/o THE HERALD, Suite 201, 881A Jane Street, Toronto, Ontario, M6N 4C4.

### BRUCE PURCELL

Specializing in:

Acoustics, Drywall  
Lathing, Taping  
Texture Spraying

Residential &  
Commercial

FREE ESTIMATES

853-0305

### BEAT "RISING" HEAT COSTS RE-INSULATE NOW!

ROGERS INSULATION LIMITED is a local contractor and has trained specialists who can analyse your heat loss and inadequate ventilation problems. They can also answer any questions you may have concerning the Canadian Home Insulation Program Grant.

ROGERS INSULATION LIMITED carry only C.M.H.C. approved products and have high quality guaranteed workmanship at a reasonably low cost to you, the consumer. So before you re-insulate, you owe it to yourself and home as a taxpayer to have a FREE estimate from an experienced insulation and ventilation expert.

"We cover Halton Hills Like the Dew"

FOR YOUR FREE ESTIMATE PHONE

Jim Rodgers 853-2828

### GORD HAMILTON'S CUSTOM CARPENTRY

- Custom Homes
- Additions Renovations
- Commercial Building

"Heat Conservation a Priority"

1-519-833-9857  
(Call Collect)

877-3144

ANOTHER  
SPACE  
RESERVED  
FOR  
YOUR AD

### RAMROCK ELECTRIC



Residential  
Commercial  
Industrial

Wiring & Rewiring  
of  
New & Existing Homes

ALL PHASES OF  
ELECTRICAL WORK  
FREE ESTIMATES

Bus: 844-0526 Res: 877-7708

SAVE  
APPROX. 20%  
ON



DECORATING FUN

Georgetown Market Centre  
877-4942

### MR. SLEEP

Beds - Swivel Rockers  
Chesterfields - Mattresses

BIG SELECTIONS

SAVINGS

456-0304

Eastown Plaza Corner of  
Queen & Kennedy  
Brampton

SLEEP SHOP

### FORD BROTHERS

A complete line of  
Swifts Feeds

- FENCE SUPPLIES
- FARM FERTILIZER
- LAWN & GARDEN SUPPLIES & SEED
- PURINA DOG AND CAT FOOD
- MASTER HORSE FEED

877-2008

BALLINAFAD



### Michael Fobert

CARPENTRY  
SERVICE

- Renovations • Additions
- Rumpus Rooms
- Design Ideas

QUALITY WORKMANSHIP  
FREE ESTIMATES

Ask For Mike 877-1547

### Lower Your Rising Heat Bills

WITH THE



FIREPLACE INSERT

A Timberline fireplace insert turns your fireplace into a furnace

See our complete line of fireplaces and stoves

The Georgetown Stove & Fireplace Co.

877-8213

348 Guelph St. - Georgetown