



CHECK FOR HOSTEL

(Herald photo)

The special children's performance of the Georgetown Choral Society's annual Christmas presentation was special indeed this year. The proceeds of the matinee were donated to the Halton Women's Place hostel in celebration of the year of the

child. Receiving the cheque for \$300 on behalf of the hostel is Janice Krone, fund-raising chairman. Making the presentation are music director Dale Wood, society president Joyce Hewson and secretary Kathie Hulley.

Bigelow carries vandal fight to all government levels

HERALD SPECIAL
Restaurateur Bert Bigelow has gone to all government levels in his fight against the vandalism which he feels could be ruining his trade in this community.

Mr. Bigelow has sent letters of protest to Prime Minister Joe Clark, Premier Bill Davis, Ontario attorney-general Roy McMurtry, Halton MP Otto Jelinek and the mayor and councillors of Halton Hills protesting the lack of police protection in town.

The town's general committee received the letter last week, the same night a new loitering bylaw was approved in principle.

The new bylaw, Coun. Terry Grubbe explained, will be easier to enforce because it refers the definition of loitering to the Criminal Code of

Canada, rather than leaving the question up to the enforcing officer as the old law did.

The loitering bylaw as it stood was one concern Mr. Bigelow voiced in his letter.

VANDALISM RIFE
"Vandalism is rife, the flower planters are pulled apart, and the contents along with other garbage litter the streets," he writes.

"Youths congregate in the doorways of stores in defiance of merchants' requests for them to move, and force even elderly shoppers to step off the sidewalks onto the pavement in order to pass by," he adds.

"We have even been able to name some of the offenders but the police seem unable to help."

He wonders how far things will have to go before "the authorities realize that it is

becoming necessary for the lash and even hanging to be brought back to the judicial system, and for the strap back in the schools."

Maplehurst Correctional Centre is called the "Milton Hilton" by local youths, he says, calling this an apt comment on our present correctional institutions.

BRING BACK LASH
"It is all very well to pander to the psychologists' approach

to the modern day mores and freedom of the individual, but what about a little justice and protection for the freedom of the hard-working small businessman?" he asks.

Mr. Bigelow has not yet received a reply to his letter, but vows if he does not get any action, he is going "right to the top."

"I'm nearing the end of my rope," he said.

University of Guelph

EVENING AND WEEKEND CREDIT COURSES, Winter Semester January-April, 1980

You can take credit courses at the University of Guelph. Admission is easy. If you are over 21 and have been out of school for at least two years you can apply.

In the mail this week you will be receiving an announcement of the more than 50 credit courses being offered in the evening and on weekends during the 1980 Winter Semester.

For help in selecting your courses telephone 824-4120, ext. 3956 or toll free 1-800-265-8344, ext. 3956. Or, come visit us in person at the

University School of Part-time Studies and Continuing Education, Room 103, Johnston Hall, University of Guelph, Guelph, Ontario, N1G 2W1



WAXING WONDER

John Scott demonstrates the fine art of "hot waxing" skis. The waxing demonstrations were part of last week's "Ski-A-Thon" and skate exchange at the Gordon Alcott arena. John and his partner, Jeff Smith, also provide hot waxing for skiers from Jeff's home. An appointment can be made by calling 877-6781. (Herald photo)

Meet YOGI BEAR and SANTA at Shoppers World

It's a happy time of year and Shoppers World is glowing with friendly Christmas spirit and beautiful decorations.

Santa Claus is waiting to hear Christmas wishes and to pose for a picture or two daily from 10:30 a.m. Yogi the Bear, BooBoo, and all their friends are busy decorating Jellystone Park for the best Christmas ever. There are lots of prizes to be won in our Children's Christmas colouring contest.

Just ask Santa for an entry form.

Bring your Christmas shopping list to Shoppers World, the friendly place to do your shopping.



©Hanna Barbera Productions

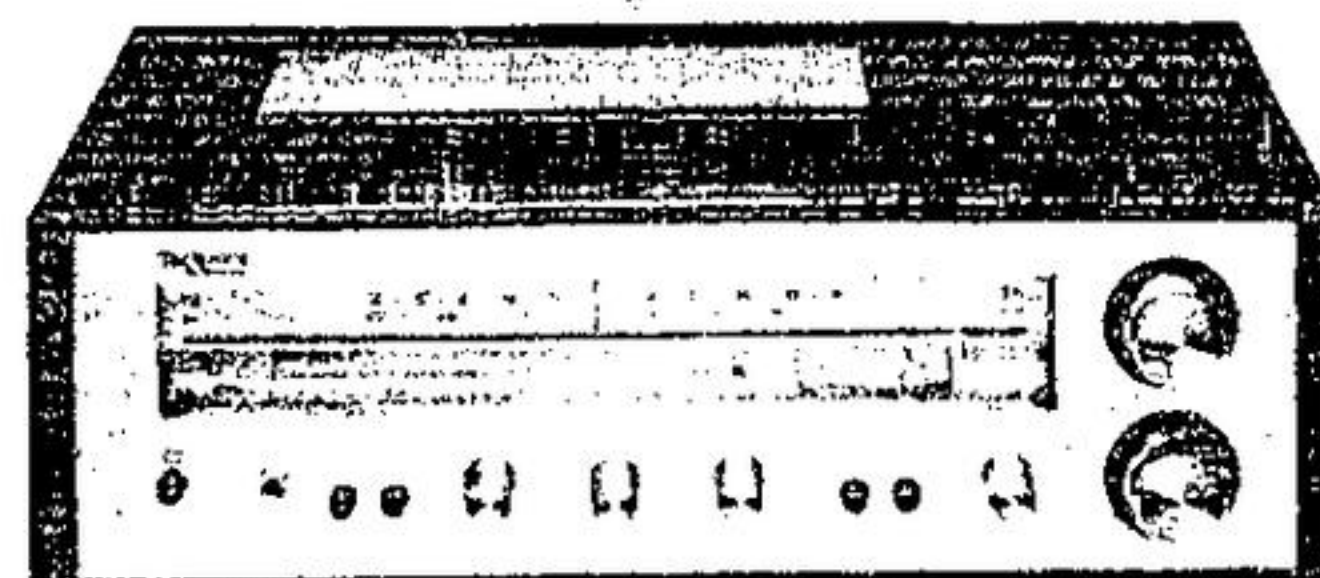
The friendly place to shop

Shoppers World

Open 'til 9:30 p.m. Monday - Saturday, now until Christmas.

HIGHWAY #10 & STEELES AVE.

Christmas Suggestions From Technics



Stereo Receivers SA-80

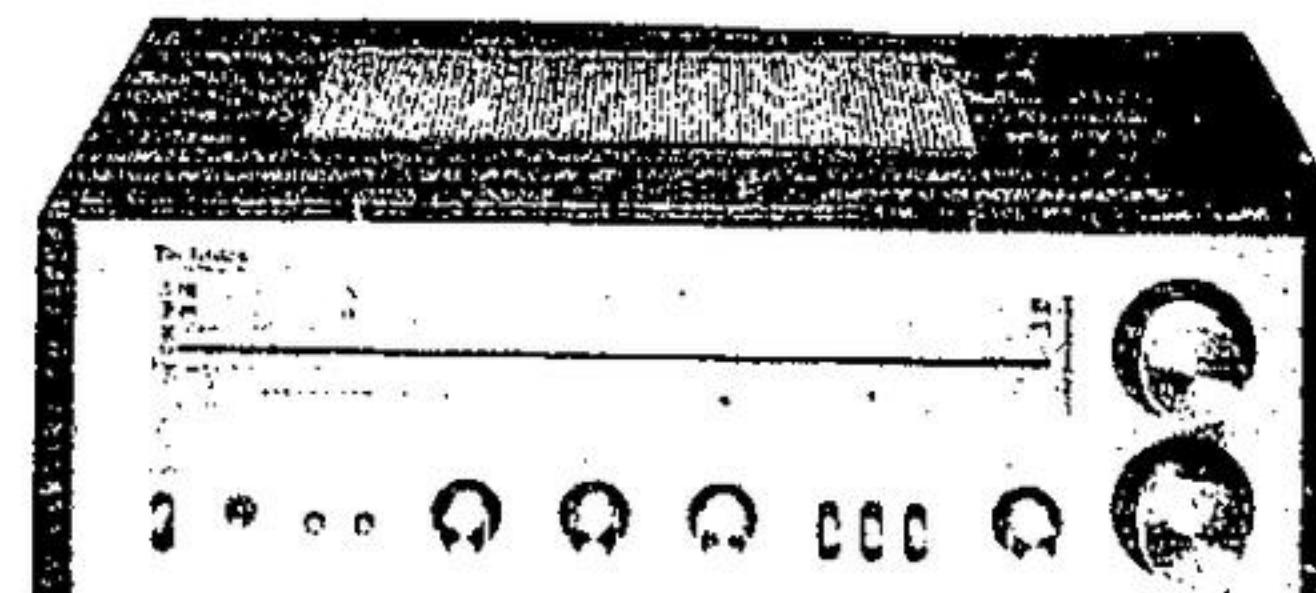
15 Watts per Channel
0.3 per cent T.H.D.
S-N Ratio on Phono 90 DB

\$239⁹⁵

SA-200

25 Watts per Channel
0.04 per cent T.H.D.
S-N Ratio on Phono 90 DB
Direct-coupled OCL
Power Amplifier

\$299⁹⁵



Stereo Frequency Equalizer SH-8010

Each Channel Divided into five bands
S-N Ratio 95 DB
0.05 per cent T.H.D.

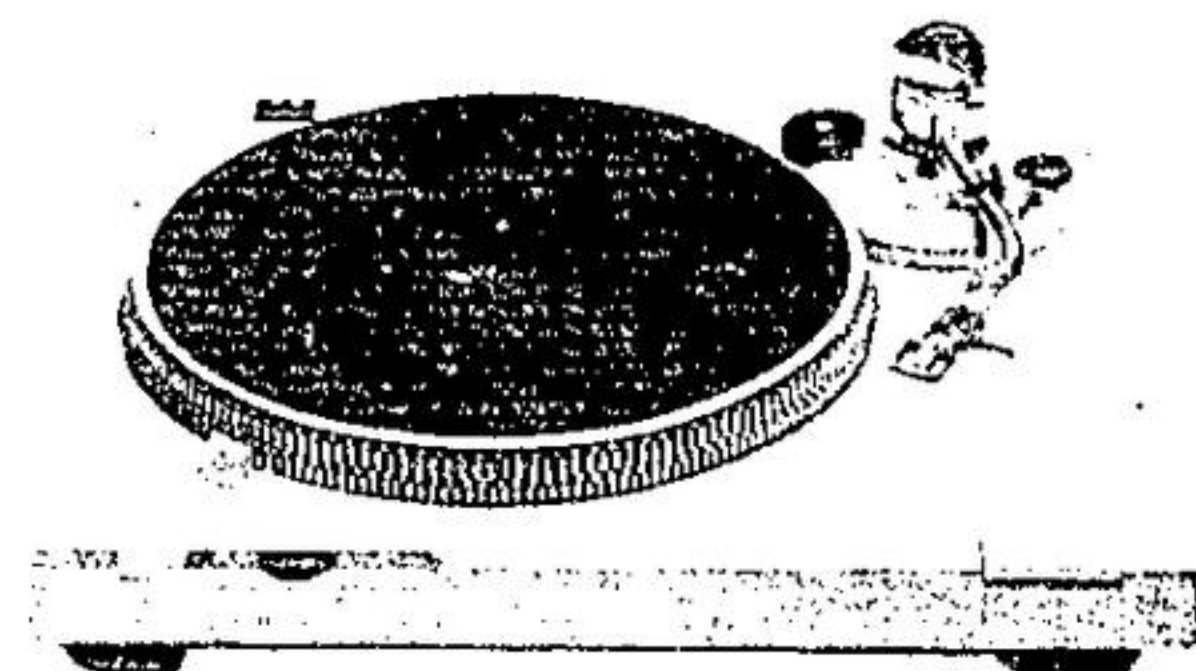


\$229⁹⁵

SL-B2 Semi-Automatic

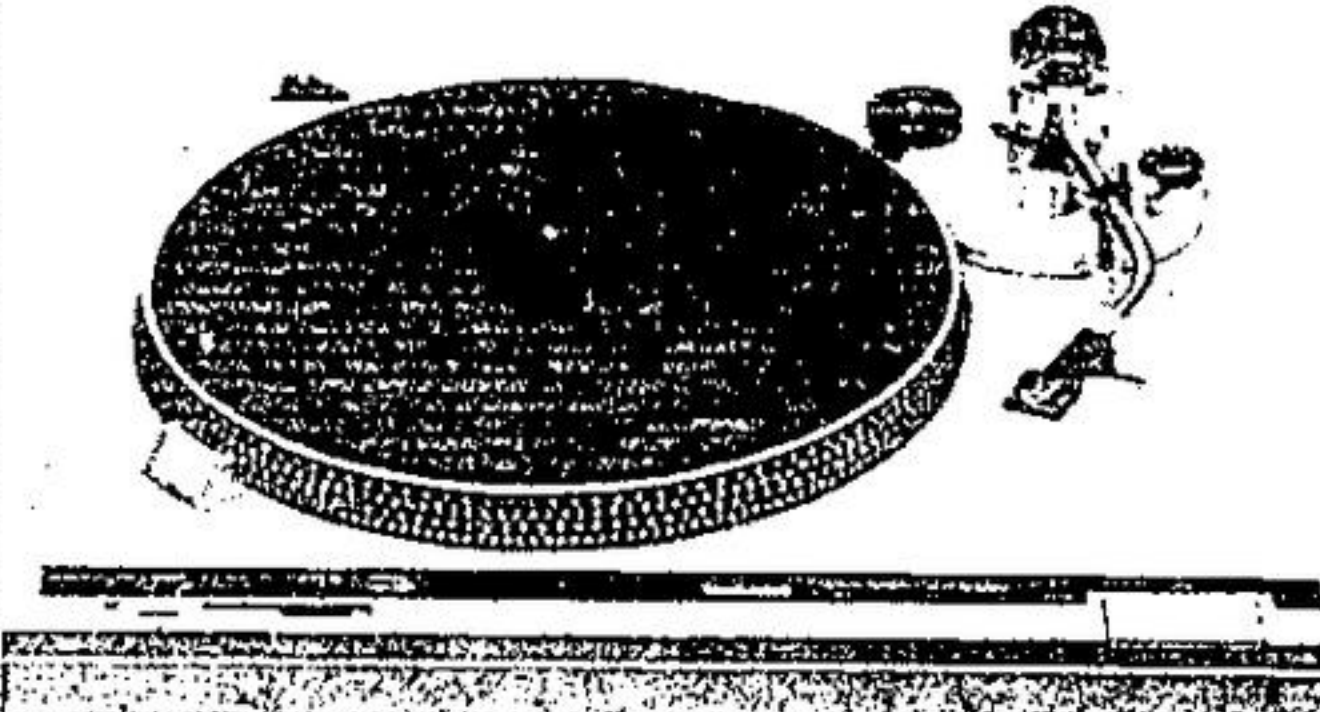
Belt Drive
Wow & Flutter 0.045 Per cent
F.G. Servo System
Shure M70 Cartridge

\$179⁹⁵



Direct-Drive Turntables SL-D2 Semi-Automatic

Wow & Flutter 0.03 per cent
BFG Servo System
Shure M70 Cartridge

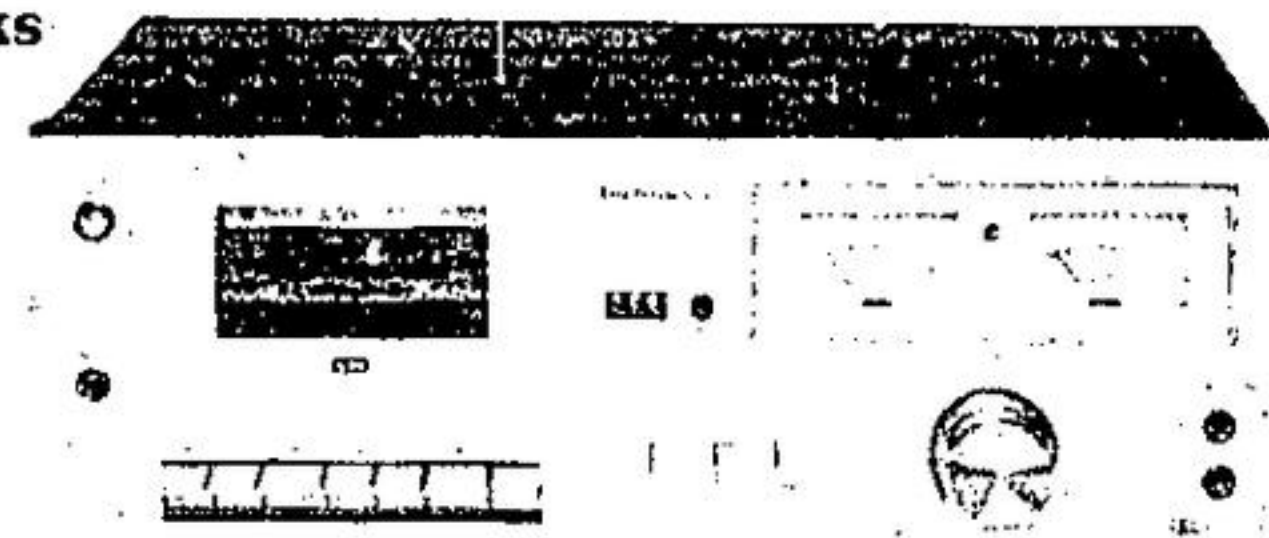


\$229⁹⁵

Front-Loading Cassette Decks RS-M7

Dolby - VU Meters
Full Auto Stop
Wow & Flutter 0.08 per cent
30-15000 HZ (CR02 - FeCr Tape)

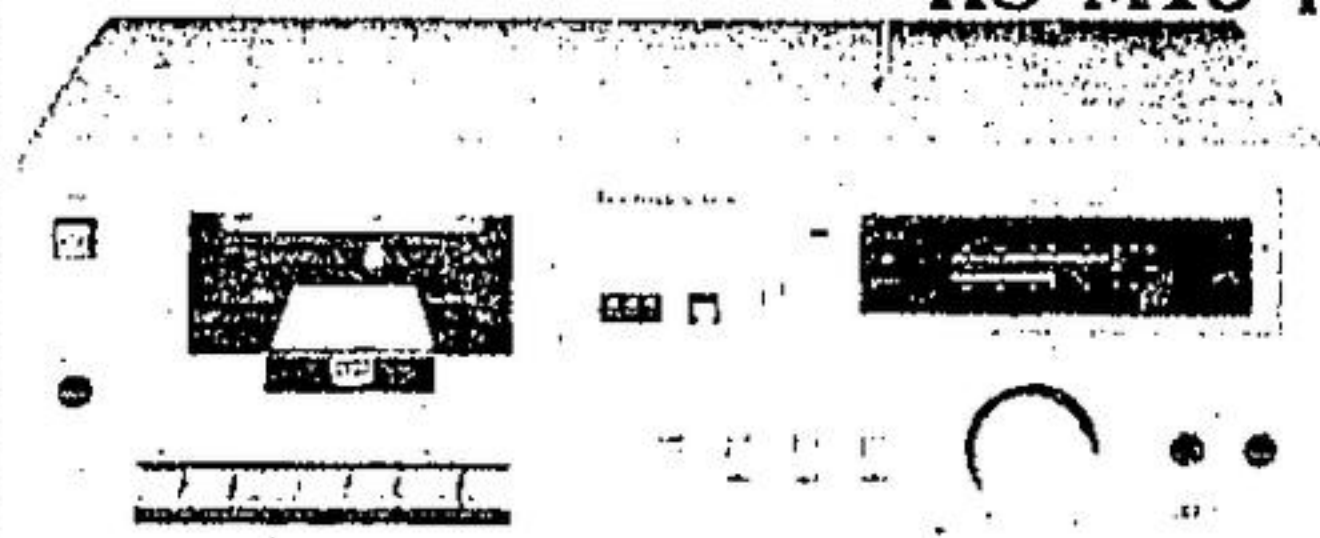
\$249⁹⁵



RS-M18 Front-Loading Cassette Decks

Dolby - Fluorescent Meters
Full Auto Stop
Wow & Flutter 0.06 per cent
30-16000 HZ (CR02-FeCr Tape)
Cue & Quick Review
S-N Ratio 66 DB

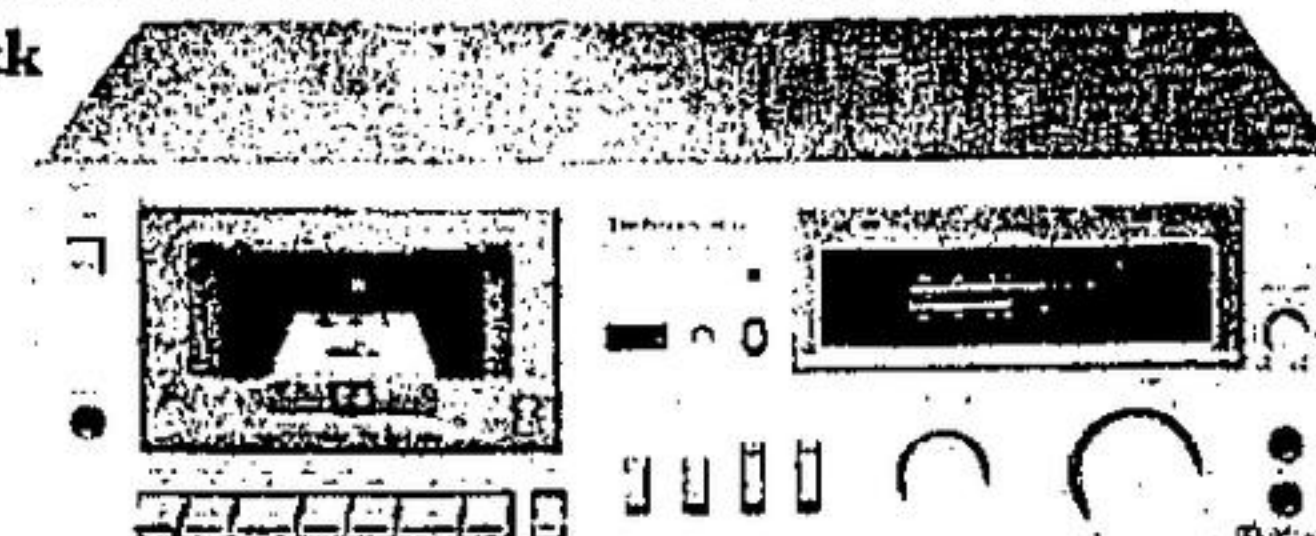
\$329⁹⁵



Front-Loading Cassette Deck

Dolby - Full Auto Stop
Fluorescent Meters
Wow & Flutter 0.05 per cent
30 - 17000 HZ (CR02 - FeCr Tape)
HPF Record-Playback Head
S-N Ratio 67DB
Cue and Quick Review
Memory Auto Play

\$449⁹⁵



RS-M33

CHRISTMAS SHOPPING HOURS 9 - 9 MON. TO FRI. SAT. TIL 6

G/S TELEVISION
GUEPHVIEW SQUARE GEORGETOWN
877-9541