



cut from
Canada
grade 'A' beef

was
2.98

full slice round
steak

lb. **2.28**

save .70 lb.



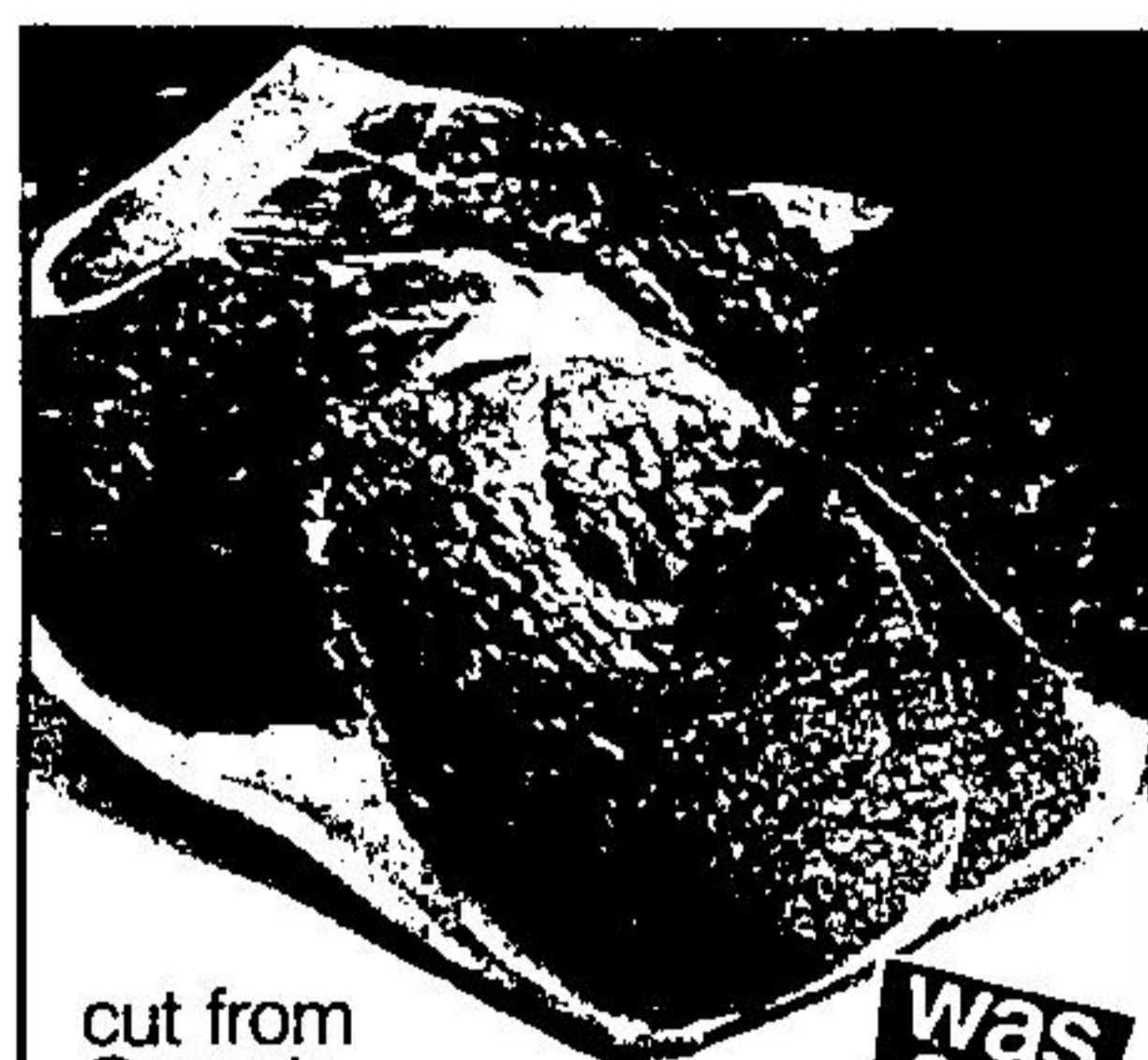
freshly
ground

was
2.38

medium
ground beef

lb. **1.98**

save .40 lb.



cut from
Canada
grade 'A' beef

was
2.88

round end
rump roast

bone
in
lb. **2.18**

save .70 lb.



was
1.79

"singles"

Kraft process
cheese slices

1 lb.
pkg. **1.49**

save .30



no. 1 creamed

was
2.45

billy bee
white honey

2 lb.
plastic
tub **1.89**

save .56



(plus 40¢
deposit)

returnable
bottle

big Coke

1.5 litre
btle. **.49**

save on Coke