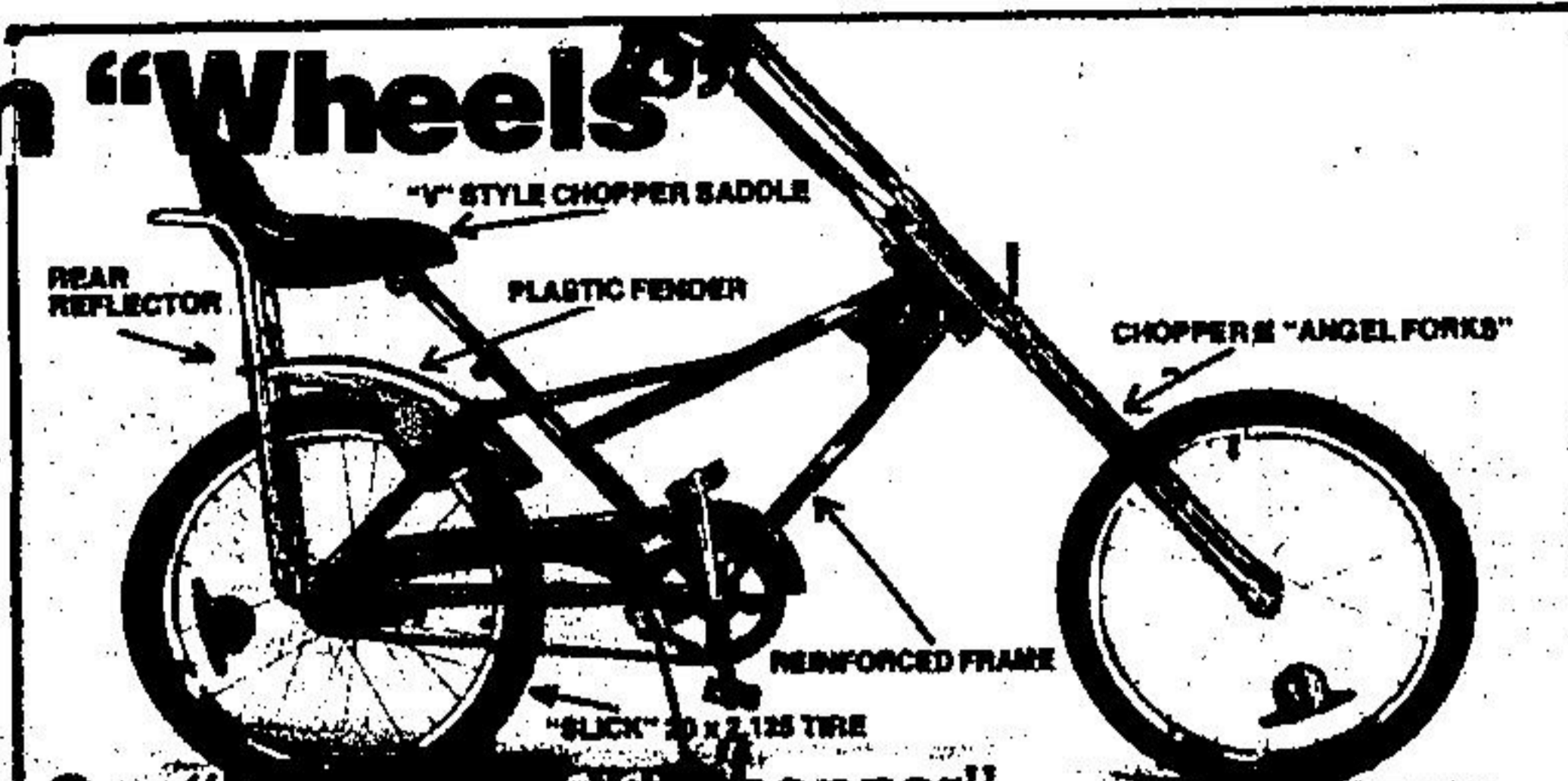


Zellers Big Deals On "Wheels"



Save 25.00
124.97..
Deluxe Moto Cross Bike

Zellers own "Venture" MX1500 with above features plus:
 • "Shimano" coaster brake • 20 x 2.125 knobby tires
 • Adjustable Motor Cross saddle • Imitation plastic gas tank
 • Plastic fenders • 8-way reflector set • Kickstand • Red and black combo finish.



Our "Blue Break" Chopper

Zellers own "Venture" with above features plus:
 • "Shimano" coaster brake • "Angel forks" • Full chain guard • Chromed sissy bar • 8-way reflector set • Kickstand • Blue with grey fender.

Save 15.00
114.97..

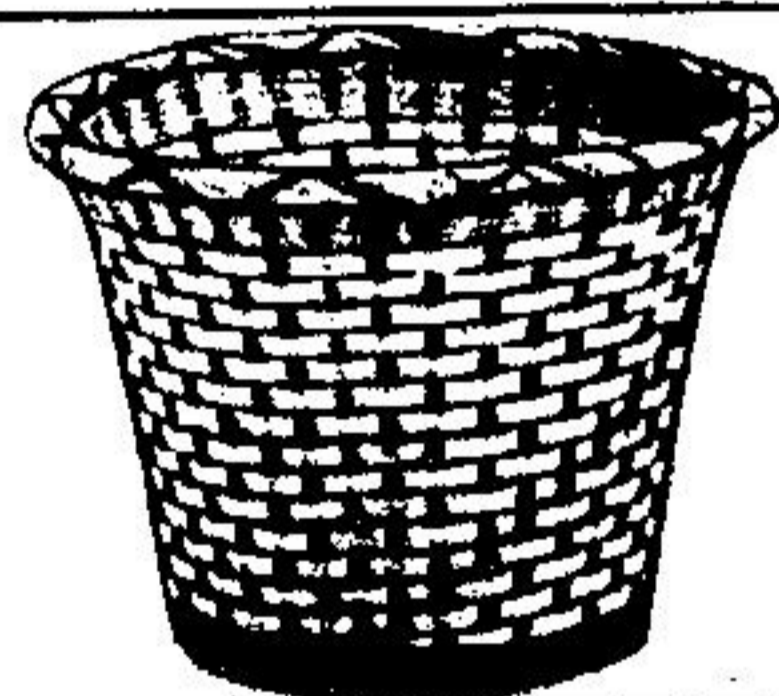


Save 10.00
99.97..
"Trailbuster" "Off Road" Moto Cross Bike

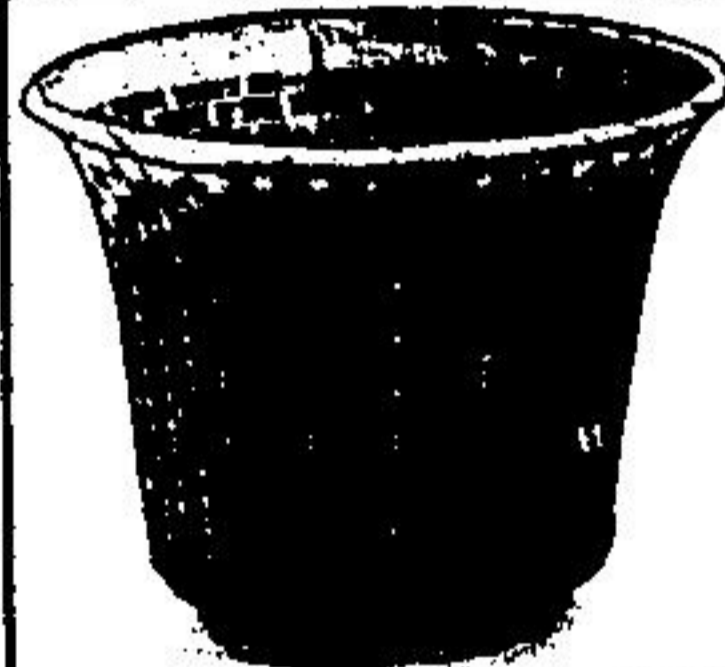
Zellers Off Road "Venture" with above features plus:
 • Knobby 20 x 2.125 off road tires • Heavy spokes & rims • Coaster brake • Reflector pedals • Kickstand • Pearl white with red and black trim.

Bicycle Accessories
 We have a complete range for all makes and models, featured at Zellers low prices.

Every Basket Planter You Could Ever Want!



2.00 to 4.50..
Two-Tone Basket Planters
 Attractive display for your potted plants!
 All sizes approx.
 6" 2.00 12" 3.50
 8" 2.50 14" 4.00
 10" 3.00 15" 4.50



1.00 to 6.50..
Tri-Tone Basket Planters
 Interesting weave in red, black and bamboo shades.
 Sizes approx.
 5 1/2" 1.00 8 1/2" 4.00
 6" 1.50 9" 4.50
 6 1/2" 2.00 9 1/2" 5.00
 7" 2.50 10" 5.50
 7 1/2" 3.00 10 1/2" 6.00
 8" 3.50 11" 6.50



1.00 to 5.50..
Two-Tone Mini-Weave Baskets
 Flare top baskets in dark brown and bamboo shades.
 Sizes approx.
 5 1/2" 1.00 8" 3.50
 6" 1.50 8 1/2" 4.00
 6 1/2" 2.00 9" 4.50
 7" 2.50 9 1/2" 5.00
 7 1/2" 3.00 10" 5.50

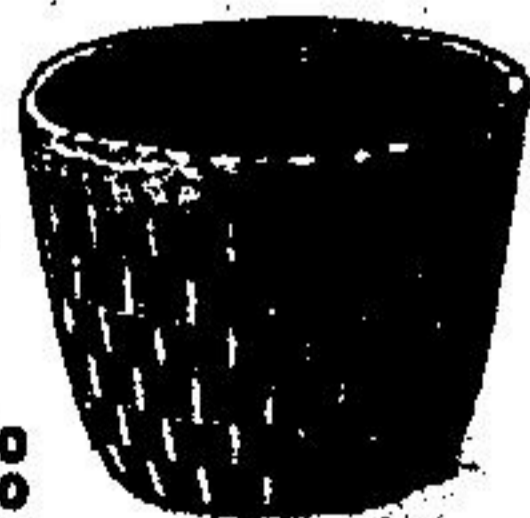


3.00 to 5.00..
Striped Basket Planters
 Intriguing weave in charcoal and beige shades.
 Sizes approx.
 6 1/2" 3.00 11 1/4" 4.50
 9" 3.50 12 1/4" 5.00
 10 1/4" 4.00

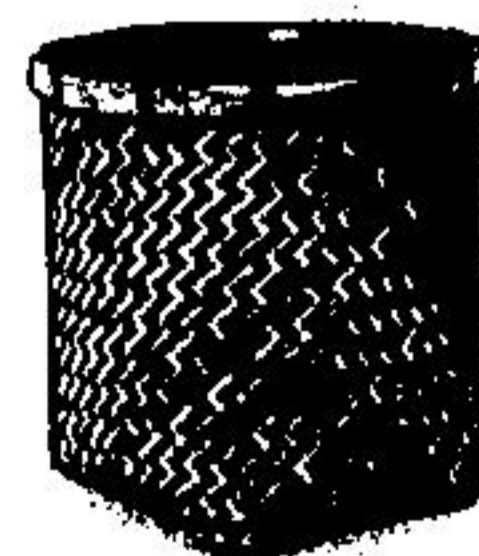
2.00 to 4.00..
Hexagonal Basket Planters
 A natural touch to complement your greenery!
 Sizes approx.
 7" 2.00
 7 1/2" 3.00
 8 1/2" 4.00



2.00 to 4.00..
Two-Tone Basket Planters
 8" 2.00
 8 1/2" 2.50
 9" 3.00
 9 1/2" 3.50
 10" 4.00



4.00 to 8.00..
Contemporary Basket Planters
 Two tone zig-zag design.
 Approx. sizes.
 8 1/2" 4.00
 9" 5.00
 9 1/2" 6.00
 10" 7.00
 10 1/2" 8.00



4.00 to 6.00..
Beautiful Basket Planters
 Classic urn shaped planters.
 Sizes approx.
 6" 4.00
 7" 5.00
 7 1/2" 6.00



Because of floor space limitations, some items, sizes and/or colours shown on this page may not be available in all stores.