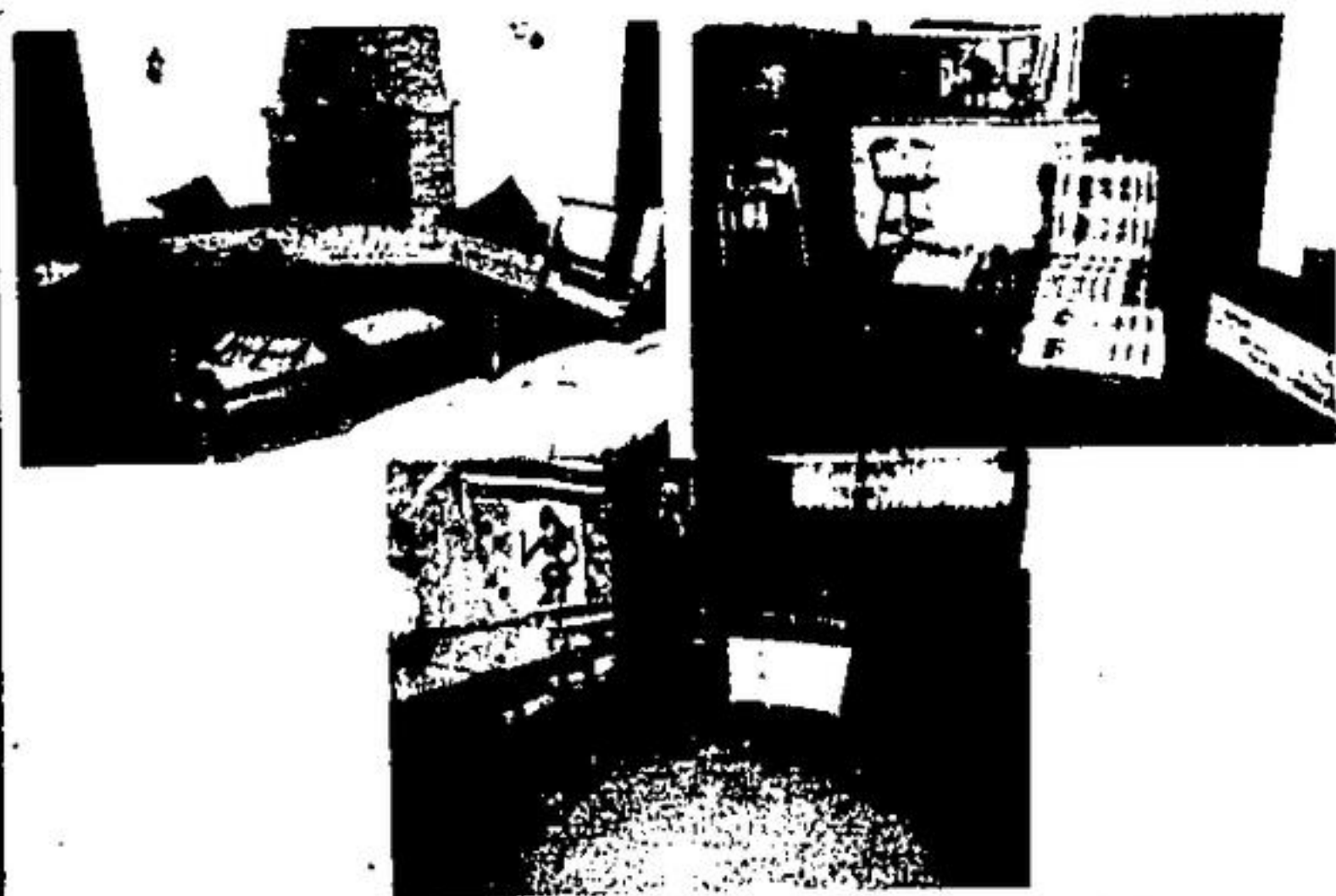


POLZLER REAL ESTATE LTD.
453-8454



NEED A BIG REC ROOM WITH A FIREPLACE AND A BAR
You're in luck. This 3 bedroom bungalow with attached garage has it all, and it's been professionally done. Why not inspect it this minute. Call Rudy Cadieux 877-8244, 453-8454.

VENDOR HAS BOUGHT LOOKING FOR A FIRM BUYER WITH A QUICK POSSESSION
3 bedroom bungalow, garage, finished basement. Situated on a lovely landscaped lot. Priced in the mid 60's. Guaranteed trade-in. Can be negotiated! Why not investigate? Call Rudy Cadieux 877-8244, 453-8454.

FABULOUS VIEW
From the windows of this bright spacious quality home with impressive entrance, 3 bedrooms, library, stone fireplace in family room, finished basement, in-ground pool on an acre minutes to town. Nicely landscaped. Call Freddie.

TIME TO START LOOKING
For out of town properties. Excellent selection - from 1/2 acre to 50 acres, from \$50,000 to \$200,000, from raw land to 4000 sq. ft. luxury custom built home. Inquire now. Call Rudy Cadieux 877-8244, 453-8454.



Canada Trust
877-9500

MOORE PARK AREA
4 bedroom sidesplit on oversized lot. Main floor family room with a 2pc. washroom & walkout, large kitchen, dining room, bright living room, large and spacious basement with paneled rec room, laundry room with work area. Price \$69,900.

IDEAL FAMILY HOME
4 bedroom, 2 storey home could be the home you are looking for. Spacious kitchen with lots of cupboards and built in stove, adjoining dining area, cosy living room. Full basement with rec room, plenty of room for the children to play indoors and treed yard when they go out with trees and shrubs. Priced at \$62,900. Make an offer.



100 x 163 YARD

Situated on a beautiful double lot. Lots of trees and plenty of room for the green thumbed girl. You will find a spacious bungalow with a main floor family room, dining room, large living room. Ideal for a young couple. Asking \$62,900.



UNIQUE & COZY
Enjoy your summers in this 1 1/2 storey home with its open verandah. Over-size lot and its big old shade trees. Inside is cozy and comfortable, 4 bedrooms, dining room, large kitchen and more. Would you like to see it. Give us a call at 877-9500. Listed at just \$58,200.

COUNTRY PROPERTY
Are you looking for country property. Why not buy a brand new one. Workmanship guaranteed for 5 years. Location excellent. Beautiful lots, 3 different styles. Priced from \$107,900 to \$123,000. We also have some beautiful estate resale from 1 to 15 acre lots.

10 ACRE LOT
Build that dream home. Good commuting distance. Just north of Georgetown. Asking \$39,900.

Century 21

Jon Zorge Real Estate Inc.
MEMBER BROKER

MATT TODD 877-4590 AL CURRIE 877-4133
JON ZORGE 877-5345 CLAUDETTE LAGRANDEUR 877-7627

877-0155

YOU SEE OUR SIGNS ALL OVER

WHAT WILL YOUR MONEY BUY TODAY?

- LOTS & LAND**
- 1/2 ACRE hillside building lot, overlooking Credit River and Valley. \$39,900.00. 848
 - TEN ACRES of rolling land near Terra Cotta. Approved for permits. \$41,500.00. 849
- LOW COST**
- Low maintenance townhouse in Acton. Very attractive interior. It stands out from the rest. \$38,500.00. 850
- EXCEPTIONAL**
- 4 bedroom home. Almost new broadloom, patio and garage. Available with a 10 1/4 percent mortgage. \$72,900.00. 851
- IMMACULATE**
- inside and out. Tri level with family room, garage and split rail fenced yard. \$54,900.00. 852
- SOLID BRICK**
- bungalow, bed and bath facilities downstairs. Name your own financing terms. \$56,900.00. 853
- TRANQUIL CHARM**
- You'll enjoy watching nature, surrounding this clean oversized hillside bungalow. The extra fourth bedroom plus another 4 pc. bath downstairs will come in handy. Large rooms with extra big kitchen for the active family, all this for a moderate price, \$69,900.00. 854
- NEW SEMI'S ARE IN**
- Delightful living on quiet cul de sac, backed by conservation area. This beauty in Heart Lake Village combines pleasant country surroundings with modern conveniences and is only one year old. \$58,900.00. 855

STORE FOR RENT:

Good exposure, centrally located. Ask for Matt. 856



ONE HUNDRED AND ONE YEARS OLD
This lovely century home on a marvellous treed lot is located in Cheltenham, 10 minutes North of Brampton. A convenient modern kitchen with breakfast area 5.70 x 3.2m in total, marble fireplace in livingroom, 3 bedrooms, gracious old pine throughout. Price now \$99,900.00. 857



POPULAR OPEN CONCEPT
This country squire model on beautiful ravine lot boasts 4 bedrooms, family room with Franklin fireplace, and 2 bathrooms. Kitchen overlooking the family room is handy for watching the kids while doing the cooking. Priced right \$74,900.00. 844



SPACIOUS ROOMS
and many convenient build ins makes this home super convenient to live in. Sewing desk, kitchen with center island, lovely separate dining room and much much more. Located on 66 foot wide lot with nature trees. New listing \$65,900.00. 845



A PERFECT SIDESPLIT
Located in Milton only minutes from 401 for easy commuting. See this well kept home with double garage, roomy kitchen, dishwasher, broadloom throughout and real fireplace in lovely rec. room. Only \$75,900.00. 847

THIS WEEKS FEATURE HOME



SPOTLESS
is the word that describes this 3 bedroom sidesplit. Completely finished from top to bottom including a lovely paneled family room and decorated with care and good taste. Newly listed at \$64,500.00.

10 Mountainview Rd. S., Georgetown 457-2624

PARADE OF HOMES

A BIG GREEN LAWN — THREE WHOLE ACRES

Jack Eggens has the biggest putting green in Canada - all three acres of it. While it will never see a frustrated golfer, the answers it provides Professor Eggens and his colleagues at the University of Guelph will point the way to neater and trimmer lawns, healthier greens for golfers, and more attractive parks.

Actually, the three-acre green is only part of about ten acres of turf plots maintained by the department of horticultural science of the University of Guelph. Turf research projects, though, are an interdisciplinary affair with faculty members from the departments of environmental biology and land resource science participating.

"Grass is just about the most abused plant that I know of," says Prof. Eggens. "We kick it, stomp on it, cut it, tear it apart, pull it, roll on it, turn animals out to eat it, and still it survives."

Prof. Eggens and his colleagues are using their ten acres at the Ontario Ministry of Agriculture and Food's Cambridge Research Station to test improved strains, to find out how best to pamper it and help it survive, and sometimes how to limit its growth.

The extent of the University of Guelph's turf research program, and the wide range of disciplines represented by those taking part make this unique undertaking a strong area of turf research in Canada. Most aspects of turf management, from the evaluation of improved cultivars to the development of sound fertility, pest and disease programs, have a place in University of Guelph research.

Professor Clayton Switzer, who is also Dean of the Ontario Agricultural College, is continuing his research into the interrelationship of herbicides and management practices on weed control in turf. He is also evaluating the response of turfgrasses to growth retardants and the reduction in mowing through their use.

As most golfers know, snow mold can be a serious problem in creeping bentgrass putting greens and golf course airways. Researchers are evaluating chemicals for control of snow mold and other turf diseases without harming the beneficial micro-organism life in the soil.

One fungicide that is known to be effective against Sclerotinia dollar spot problems also proves harmful to earth worms. Prof. Steve Fusthey of the University of Guelph's department of environmental biology, is researching fungicides which will provide good control but will permit the earth worms to carry on their vital work in keeping the soil well drained and in consuming the "thatch" or organic matter from fallen clippings.

Thatch control is always of concern in good turf management, and especially so where the turf is managed intensively, such as on golf courses and sports fields. When watering and fertilizing are heavy to promote optimum growth, large amounts of clippings fall onto the turf. If a layer of crop refuse is allowed to build up, it produces a mat or thatch that interferes with watering, fertilizing, and growth. The turf manager must expedite the decomposition of the clippings, or else remove them physically.

McENERY AGENCIES LIMITED

35 MAIN ST. ERIN
519-833-9393
BRAMPTON 453-3811



\$79,900 - 4 bedroom split level featuring large family room with stone fireplace and patio doors, master bedroom walkout to balcony, living room 21x16. Large rec room. Over 2000 sq. ft. living space. 2 car garage. Large lot.



\$87,900 - Spacious 2 storey 4 bedrooms solid double red brick turn of the century home. Completely renovated. 1 1/2 baths, 2 sunporches, treed lot PLUS 2 storey carriage house. Many extras.

ERIN TOWNSHIP
100 acres of very fertile sandy loam about 5 acres hardwood bush. 20 year old barn like new, 3 bedroom bungalow with fireplace. Asking \$132,000. with \$25,000 down, vendor take back balance.

LOTS

- \$25,000 - One third acre with 100 foot frontage backing onto bush. Village services in.
- \$25,500 - 200 by 150' lot just south of Village. Treed frontage.
- \$29,900 - 161' frontage. Services in. Backing onto bush. Nice area.
- \$30,000 - 1 acre Village lot with large garage.
- \$39,900 - 3 acres industrial and commercial. Main intersection.
- \$39,900 - 25 acres, retreat with maple bush. Rolling land.

THE RAYS OF A STILL DISTANT SUN, SLOWLY BUT SURELY, DISINTEGRATES THE GREAT PILES OF SNOW. THE SNOW IS FIRST DAMP AND HEAVY, THEN SUGAR LIKE, THEN LITTLE TRICKLES OF WATER. THE TRICKLES OF MELTED SNOW ARE JOINED AND RE-JOINED INTO A GURGling STREAM, THEN TO A RUSHING BROOK AND ON TO A FAST FLOWING RIVER. ALL IS OVERSEEN BY NEWLY ARRIVED SUMMER BIRDS.

DARE WE SAY — — — SPRING?
SPRING — WHEN ALL THINGS ARE RENEWED.

WHAT BETTER TIME TO RENEW YOUR GOALS, WITH A NEW HOME AT MARYWOOD MEADOWS?

COME OUT INTO THE GLORIOUS SPRING AND SEE THESE EXCEPTIONAL HOMES.

BUT ONLY A FEW LEFT!
DON'T STEP ON THE CROCUS'

JOHNSON CARNEY

CALL THE PHONE LINE — 877-5341



Hillsburgh Village Single Homes

from **\$55,900.**
and \$4,100. per home down from

OPEN HOUSE SATURDAY & SUNDAY 12 - 6 P.M.



Take 401 west to Mississauga Rd. Turn north on Mississauga Rd to Hwy. 7, west on Hwy. 7 to Halton Rd. 3. Continue North on Halton Rd 3 straight to Hillsburgh.

Looking for a home in the heart of the country? The search ends at Hillsburgh Village Estates. These lovely single homes offer extra large lots and each home has a fireplace in the living room to enhance the quiet country setting. Shopping, schools, arena and churches are within walking distance and the Credit Valley Conservation areas such as Belfountain, Limehouse and the Forks of the Credit have recreational facilities available for both summer and winter enjoyment. And all around is some of the most beautiful country in Southern Ontario.

Hillsburgh Village Estates

Phone collect (416) 661-8020
Between 9.5 p.m.