

# YOUR-

Courtesy of Home Hardware

## How should I handle this problem area in my lawn?

Following a standard lawn programme will produce good looking grass in most situations. But sometimes there are one or more sections of lawn which do not respond to normal care. Often the remedy is simple, but a few conditions require more drastic solutions. Here are some common causes, and their cures.

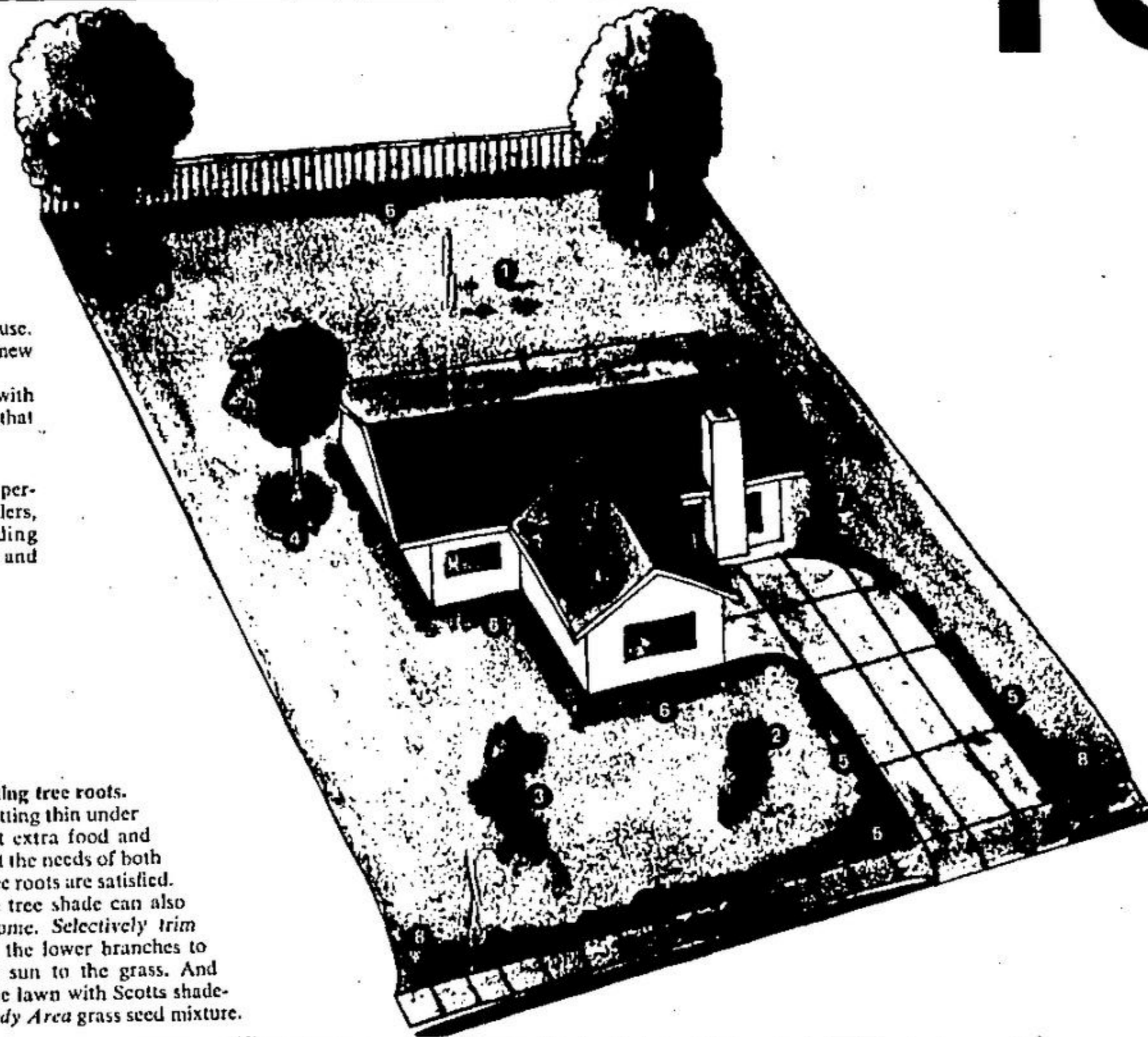
- 1 Bumpy soil.** Tan spots that show up after mowing are often caused by scalped bumps in an uneven lawn. Correct the situation the easy way: raise the cutting height of your mower an extra 1/2" to 1" so that sheared green grass blades remain after mowing—not scalped soil or tan stems. Or, do it a better but tougher way: remove sod, level the soil surface, and re-place sod.
- 2 Poor sprinklers.** If you water with a sprinkler system, brown spots on dry soil can show up near improperly working heads. To check, set out some same-sized tin cans on the brown spot and on good grass. Turn on the sprinklers and measure the water that collects in each can. If the can or cans on the dry spot get the least water, you can assume

that a bad spray pattern is the cause. Adjust, clean out, replace or add new heads if needed.

Overgrown shrubs can interfere with nearby sprinklers. Trim branches that break up a full spray pattern.

- 3 Buried debris.** When a dry spot persists despite properly working sprinklers, suspect buried objects like building materials beneath the surface. Probe and locate with an iron pipe or rod. If found, remove sod with spade. Dig out debris, refill hole. Replace sod and keep moist so roots will grow.

- 4 Competing tree roots.** If lawn is getting thin under trees, give it extra food and water so that the needs of both lawn and tree roots are satisfied. Excessive tree shade can also be troublesome. Selectively trim off some of the lower branches to admit more sun to the grass. And over-seed the lawn with Scotts shade-tolerant *Shady Area* grass seed mixture.



- 5 Hot pavement.** Sun-soaked asphalt or concrete soon dries out adjoining lawn areas—and quicker if a lawn has water-shedding slope. To those places, apply extra water between regular sprinklings. Lay a perforated plastic sprinkler hose over the dry strip and let the water ooze into the soil.

- 6 Sunny walls.** Lawns often take a beating from western sun that's intensified by reflecting off fences and walls—especially light colored ones. Replace the scorched lawn area with medium-high shrubs that enjoy basking in a hot sun.

- 7 Pathways.** Constant foot traffic compacts soil beneath a lawn, making the turf thin or bare—or messy when wet. Unless you can divert the traffic, solve the problem permanently with a pathway of stepping stones, bricks or paving.

- 8 Slopes.** Water may run off before it soaks in. When run-off starts, turn sprinklers off for 10 minutes to let soil absorb water. Then repeat the soaking process. The best water applicator for a run-off slope is a perforated hose.

Here are eight likely places where trouble may show up

**We Rent Everything**

Garden Equip.  
Building Equip.  
Painting Equip.  
Industrial Blowers  
House Insulation Equip.

**MILTON RENTALS**

WE SELL INSULATION

878-1880

**REDDOT REALTY LTD REALTOR**

MLS

• Custom Homes • Lots & Acreages  
• Recreation Properties • Resales

877-0173 453-4442

**HONDA SALES & SERVICE**

• Generators • Tillers  
• Water Pumps

Available At

**GORDON'S SERVICE CENTRE**

877-5365

**FORD BROTHERS**

A COMPLETE LINE OF SWIFTS FEEDS

- SEED CLEANING
- GRASS SEEDS
- SEED GRAIN
- FENCE SUPPLIES
- FARM FERTILIZER
- LAWN & GARDEN SUPPLIES
- PUMPA DOG & CAT FOODS
- MASTER HORSE FEED

BALLINAFAD 877-2008

**CANADIAN NORTHWOOD MOVING & STORAGE**

"Moving Canadians Ahead"

R. RAY B. BABIN, MGR.

787 Gladden Rd. BRAMPTON 451-4412

IS YOUR INSURANCE UP TO DATE? CALL US

General and Life Insurance

**DENNY'S INSURANCE AGENCY**

853-0150

After Hours 853-2565 177 Mt. St. W. Acton

**T.S. Electric Electric Contractors**

A Division of W.A.T. Electric Ltd.

- POLE LINE CONSTRUCTION
- AERIAL LIGHTING
- ELECTRIC HEATING
- TRUCKS TO SERVE YOU

Ind. - Comm. - Res.

ARMSTRONG AVE. 877-2413

★ **Patio Furniture**

★ **Gas Barbecues**

★ **Woodburning Stoves**

**Furnaces & Fireplaces**

Jim Bowles

877-0551

**J. BOWLES STOVE CO. LTD.**

71 MOUNTAINVIEW RD. N. GEORGETOWN

**the Cabinet Answer**

CAN HELP YOU MAKE YOUR KITCHEN DREAMS COME TRUE!

**Designed For Your Kitchen**

QUALITY BUILT KITCHEN CABINETS

BRAMPTON GEORGETOWN

456-0580 877-0244

**CALL STEFAN**

For Information Or Free Estimate On

**CERAMIC TILES**

Supplies - Installation Bathrooms, Kitchens Walls, Floors

877-4795

**ACTON PRECAST CONCRETE LTD. MANUFACTURERS**

- Septic Tanks
- Weeping Bed
- Well Tiles
- Materials
- Other Concrete Products

R.R. 2 Acton 853-1529

**LEC MAINTENANCE & ELECTRICAL SERVICE**

- Industrial
- Commercial
- Residential
- Rural Line Hook-up

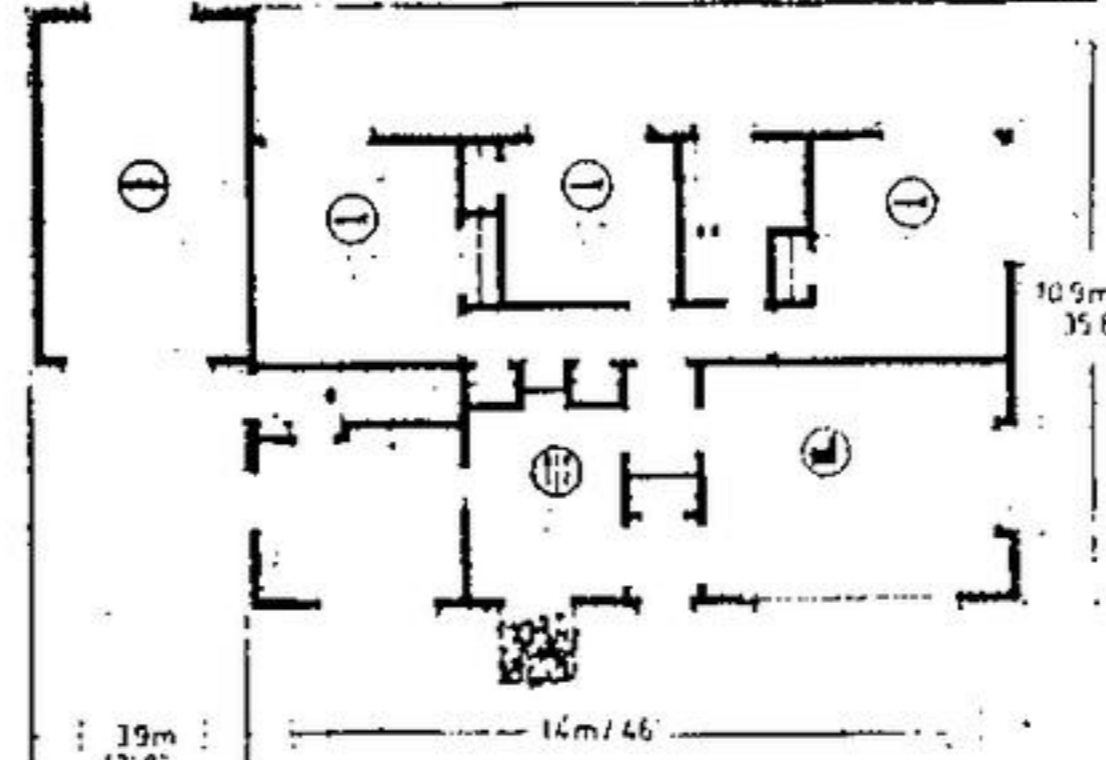
853-3519

LEC MAINTENANCE & ELECTRICAL SERVICE

PLAN No. 65-1239

1151 sq. m. ca. (1239 sq. ft.)

179 m. (588 ft.)



### STATELY FULL BASEMENT BUNGALOW

Here's an impressive design in the traditional English brick bungalow manner with three bedrooms and a full basement for the future development of recreational facilities or additional bedrooms. The pleasing low-profile exterior, finished in brick veneer and asphalt shingles, presents the charming facade so characteristic of its style and makes it perfectly suited to the wide frontage lot.

The weather-recessed entrance opens into the vast rectangular living-dining room combination, which is divided by an "Island" closet storage area. The living room features a large raised-hearth fireplace and a very wide square-paned picture window facing the house front. The dining room separates from the kitchen via convenient pocket door for privacy when entertaining.

The well-planned L-shaped kitchen has good closet storage and large working surfaces for meal preparation. A swing door connects to the side foyer - from which down to the basement or left to the garage entrance.

All three bedrooms are positioned around the central bath and well away from the entertaining area of the home. All have generous closet storage and excellent natural lighting. The bathroom has counter space adequate to the installation of a second vanity sink for easy the early morning traffic jams.

A single enclosed garage and abundant space for future development complete the convenience features of this appealing traditional design.

Plans for design No. 65-1239 may be purchased either by single set, at a cost of \$70. for the first set and \$10. for each additional set, or by the package. A five-set plan package, including the first set, is economically priced at \$100. and an eight-set package, also including the first set, is only \$125.

Whichever method you choose, please include \$4. for postage and handling.

Send for the current edition of Select Home Designs, Series 38, featuring imaginative decorating and home improvement ideas plus 350 quality home plans of every type. Available for \$2.25 (\$1.75 plus 50 cents postage and handling).

To order any of these items please send cheque or money order payable to the Home of the Week. Address to:

### New Home of The Week, c/o The Herald

103 Main St. South, Georgetown

DO IT NOW While Prices Are Low

STORM DOORS AND WINDOWS Sales & Replacement

**DELREX ALUMINIUM**

877-5383 R.R. 4, Georgetown

**Condacor TECTONIC insulation**

Where you can see and feel the difference!

- Walls, Basements,
- Interior or Exterior
- Insulation Complete With Decorator Finish

FOR INFORMATION AND ESTIMATES CALL

Acton 877-5566  
Georgetown  
Milton  
Brampton 453-1991

**Quality Custom Built Homes**

Build To Our Specs or Yours

**BURNETT HOMES LTD**

877-2487

**GLASS & MIRROR**

CUT TO SIZE

Thermo Glass Supplied & Installed

**LEON GLASS**

70 Draper Street

877-4655 Evenings

**Your Company could be advertised in this Spot**

**TERRY McMULLEN General Contractor**

- Patios Sidewalks and Stoops
- Chimneys
- BUILT & REPAIRED
- Plaster repair Stucco
- INTERIOR & EXTERIOR

CALL ME 853-3911

## The Energy Savers

A tough day with the plug-ins

We'll have to hurry. First plug in the coffee percolator and the electric kettle, and they can be doing their stuff while we set all the other little things going. There's the toaster, the blender, the toaster, the electric can opener, the sandwich grill, the waffle iron, the electric frying pan - wow! it's getting a bit thick in here, so we'd better switch on the exhaust fan.

And still somebody with their shoes on just nip outside and make sure the block heater and battery warmer on the car were plugged in last night!

Now we can all sit down to breakfast, some around the television set, if they must, and others with the radio. We don't usually allow an electric shaver at the breakfast table, but perhaps just this once. Is everybody keeping an eye on the electric clock? It's getting late, but there may not be time for someone to have a quick stampede with the help of that super fast hair dryer.

Later in the day we'll be re-using several of these handy helpers, with the addition of the hamburger maker, the deep-fat fryer and the electric carving knife, in between bouts with the sewing machine and the ironing, and we mustn't forget to take the electric lawn mower to be overhauled so it will be ready when the grass starts to grow again.

Soon it will be evening and time to relax after a tough day with the appliances, and we can then get the electric corn-popper going. And after that, someone's sure to be ready for a snack.

It's great to have all these electrical marvels to help us along life's way, but look at all the mess they leave behind. Thank heaven there's the faithful electric garbage disposal unit and the good old vacuum cleaner to wipe away all the traces.

You know what I feel like now? I'm ready for a brisk session with the electric toothbrush, and then I'll hit the hay, which feels all the sweeter for having the electric blanket on it.

Was there ever such a home as this? Let's hope that not everyone is so fanatical about appliances, because that little hot could eat up electricity at a rate of about 2,500 kilowatt hours per year. The generating station would need about 150 gallons of oil or a ton of coal to produce this much energy. Multiply this by the millions of houses and apartments in Canada, and we're really cooking, as the saying goes.

And that's without bringing up the heavy artillery in the shape of the stove, refrigerator, freezer, dishwasher, water heater, furnace, washing machine and clothes dryer.

But to return to the small appliances, some of them make a lot of sense, and not only because they save labour and make life more comfortable. For example, the electric frying pan, toaster and kettle are much easier on energy for small jobs than the stove would be, and an electric blanket can mean that the home is kept cooler at night.

The part that doesn't make sense is overloading it and overloading the circuits with devices that meet our every whim. Do we need so many? Do we need to leave them on so long, with a kettle boiling unheeded, or a fan blowing expensive warm air into the back yard long after the cooking smell has gone? And do we help appliances to perform best by keeping them clean and in good repair?

If you don't yet have 100 Ways To Save Energy and Money in The Home, the Office of Energy Conservation, Department of Energy, Mines and Resources invites you to send for a free copy to Box 3900, Station C, Ottawa, Ontario, K1Y 4G1. It really can save you money.

