

YOUR

Smart families across the land are discovering low flush conservation

Popular San Francisco radio personality Owen Spann is a water saver. Spann, host of his own talk show on KGO Radio in the bay city, has installed two Microphor "two-quart" toilets in his hillside home in Marin County north of San Francisco. He says, "The units use only 10 percent as much water as conventional toilets. Thanks to Microphor, our family beat the drought with big water savings every day."

Although the California drought is over and the days of water rationing may be gone, many Californians, like Spann, have realized the importance of water conservation. It has become part of their lifestyle. They know they've got to maintain their conservation efforts to avoid another water shortage.

A major household water culprit is the toilet. Did you know, for example, that conventional toilets waste several gallons of water during the flush cycle? The low flush toilet developed and marketed by Microphor of Willets, California, reduced toilet flush water waste.

While conventional toilets consume five to seven gallons of water per flush, Microphor units use only two quarts—a savings of 90 per-



NUMBER ONE WATER SAVER—The two-quart Microphor LF-210 toilet is shown here installed in a typical residence. The unit has no water tank as such, and operates at a low noise level. This installation features a custom toilet seat that matches the color of the shower curtain. Made of vitreous china, the unit is streamlined and modern. It can be installed easily without complicated or costly plumbing modifications.

The company's patented toilet represents a revolution in sewage treatment and water conservation. It combines practical economies while contributing to a cleaner environment.

Microphor's water saving arithmetic is simple. EPA lists toilets as using 45 percent of the water in a typical residence—baths and showers use 30 percent, kitchens take six, drinking water five and laundry four. But Mi-

crophor's impact on the water conservation movement means toilets use only 4.5 percent of household water instead of 45.

The low flush toilet's unique difference is provided by an un-seen air compressor, similar to those used in spray painting operations. A small air boost moves waste matter through the drain after each flush. The toilet looks like a standard unit but has no water tank as such.

The marketing of Microphor low flush toilets has spread nationwide in the last few years. In Minnesota, the Les Blacklocks have been using a Microphor low flush toilet in their home for nearly two years.

There has been an acute water shortage in the area, and the Blacklocks have to pump their own. "Microphor lets us do the laundry and dishes, and use plenty of bathroom water while reducing our water usage substantially," Les says. "Because there's no water tank, they're streamlined in appearance. They're quiet."

with a flush cycle that lasts just 14 seconds," he adds.

The Paul Bothwells family of Fairfield, Connecticut, has a summer home in New Hampshire that was built in

1940. It has a septic system of comparable age. As the family grew and began bringing more and more guests to the vacation house, the septic system became unequal to the demand. "No-flush" weekends became commonplace. Because of its lakeside location, and the limited land around the cottage, reconstruction of the leach field was not a simple or inexpensive matter.

But the Bothwells found out about Microphor low flush toilets. A Microphor unit was installed and the system has performed perfectly throughout a busy summer. "The toilet completely eliminated our difficulties with the septic system," says Paul Bothwell.

"At the same time, it has greatly reduced the pollution potential from our older septic system, a problem which is serious around heavily developed lake and resort areas like this."

Microphor units are also being used in public areas, such as roadside rest stops, camps, and parks. In picturesque Carmel on the California coast, four stainless steel Microphor toilets are currently in use at Carmel Beach. The beach, located at the intersection of Ocean Avenue and Del Mar, is a

popular stop for tourists. During the summer season, city officials installed portable toilets due to a severe water shortage in the area.

Now the portable toilets are gone, and Microphor units are in place. The city of Carmel is pleased with the performance of the Microphor toilets. They have ordered more units for

installation at a plaza.

"We feel the low flush type toilets have a positive effect on both septic tanks and leach fields," reports David C. Long, an environmental health official.

Even though the effluent is more concentrated than that from a conventional five to seven gallon toilet, this is

more than offset by the added retention time in the septic tank, giving the bacteria more time to digest solids. Thus a clearer effluent is discharged to the leach field.

Products developed by Microphor have received approval or certification by the International Association of Plumbing and Mechanical

Officials (Uniform Plumbing Code), Southern Building Code Congress International, (Standard Plumbing Code), Building Officials and Code Administrators (Basic Plumbing Code), National Sanitation Foundation, U.S. Coast Guard, Environmental Protection Agency and the Associations of American Railroads.

Decorating for first time? Walls make easy beginning

Like most people moving into first apartments or new homes, are you faced with decorating "from scratch" with a limited budget and not much furniture?

"Tackle the walls first," says Susan M. Barna, national decorating consultant for Sherwin-Williams. Because walls are the largest area of a room and therefore dominate any decorating scheme, use wall-coverings to add design and color—

instantly creating a warm, "lived-in" look.

Today's wallcoverings come in a wide variety of patterns and prices. Begin by choosing several that reflect your personality, lifestyle

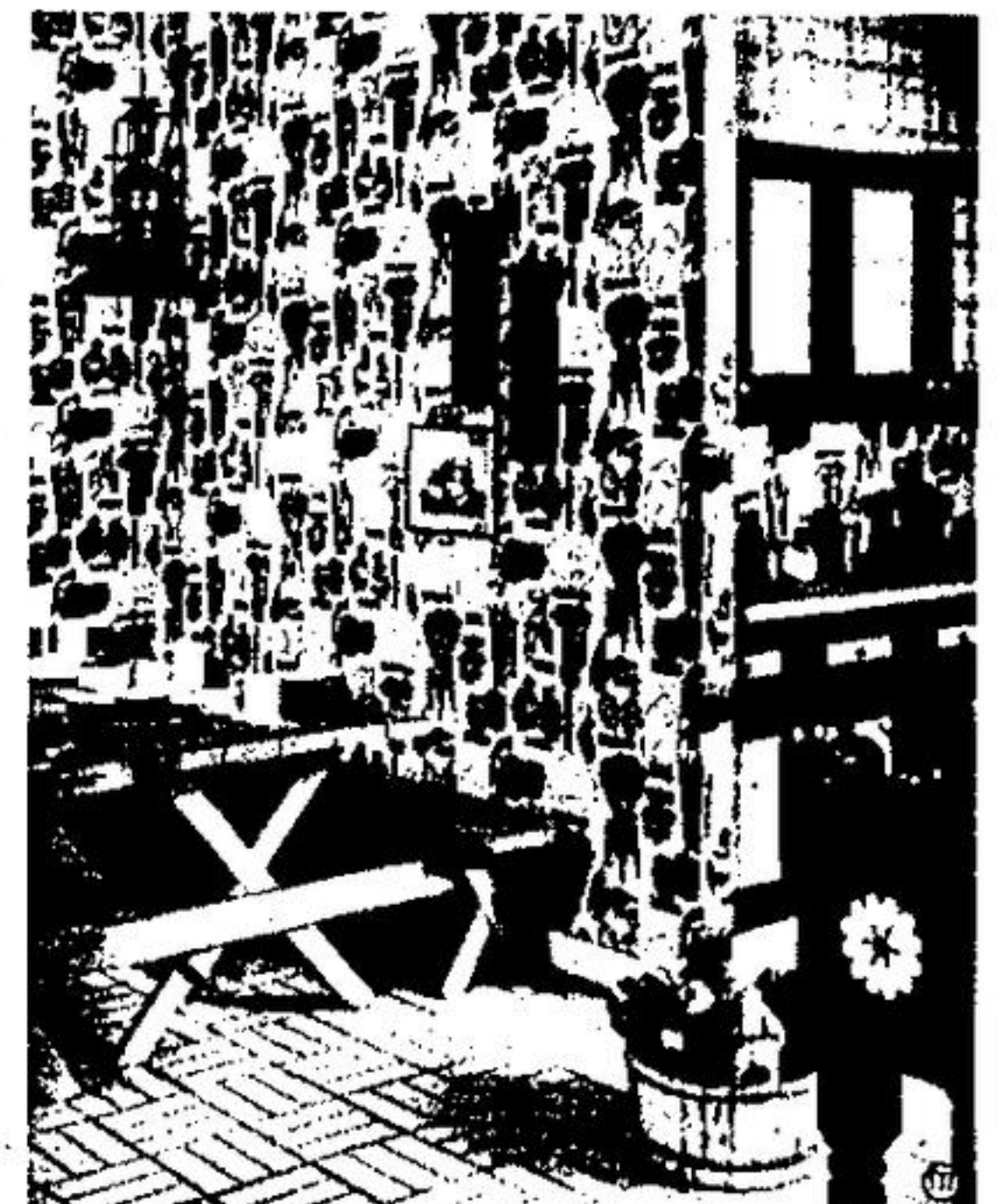
and budget, Barna says. Sherwin-Williams' Style Perfect lines, for instance, include traditional muted florals and calico prints, classic stripes and damasks, and informal tweeds and plaids.

Bold geometrics and foily form "exciting" backgrounds for modern furniture, while grasscloth and bamboo designs create an oriental look.

Also consider the room's size, Barna says. Wallcoverings with mini-print patterns and light backgrounds make a small room seem more spacious. Dark tones create a cozy atmosphere. Vertical stripes "stretch" a wall, and companion prints separated

by a horizontal chair rail or border designs visually cut the wall in half. Wallcovering

used on the ceiling also will visually reduce a room's dimensions.



EASY ON THE POCKETBOOK, this lively kitchen corner features an outdoor picnic table painted in one of the bright shades found in the colorful Sherwin-Williams wallcovering "Voluptuous Vegetables" from the Young Ideas Collection by Style Perfect. Companion design "Pronounced Plaid" in the adjacent area carries out the color scheme and makes kitchen cabinets look like new.

The Energy Savers

In Richard Charles 14

Know your furnace and keep costs down

Are you like many people who, with their furnace, content to adjust the thermostat from time to time, and yell for help if the furnace doesn't put out the heat on cue? You may be losing money in one way or another if that is all you do about it—and you don't need to go to evening classes or read thick technical manuals to find out why.

A little book called *The Billpayer's Guide to Furnace Servicing* will help you out. Drop a line to Box 3500, Station C, Ottawa, Ontario, K1Y 4G1, and it's yours free. In it, the Office of Energy Conservation, Department of Energy, Mines and Resources explains simply how furnaces work, what to watch out for, what you can do to help, and what to expect from the serviceman who should be looking after the system for you.

If you are installing a new furnace, start right by having one to match the size of your home. It is too small, it will work too hard and never warm the home properly. Also see that your model is approved for safety and sound construction. If it is, it will have a seal on it from the Canadian Standards Association, Canadian Gas Association or Canadian Electrical Association. Then arrange to have the furnace overhauled and serviced on an annual basis by your fuel supplier or local furnace service company to keep it working efficiently and safely.

With an oil furnace, the serviceman should visually check the filling and vent pipes, fuel indicator, oil lines, exhaust breeching or chimney pipe, furnace casing, warm air ducts, hot water pipes (if any), and the burner and burner chamber.

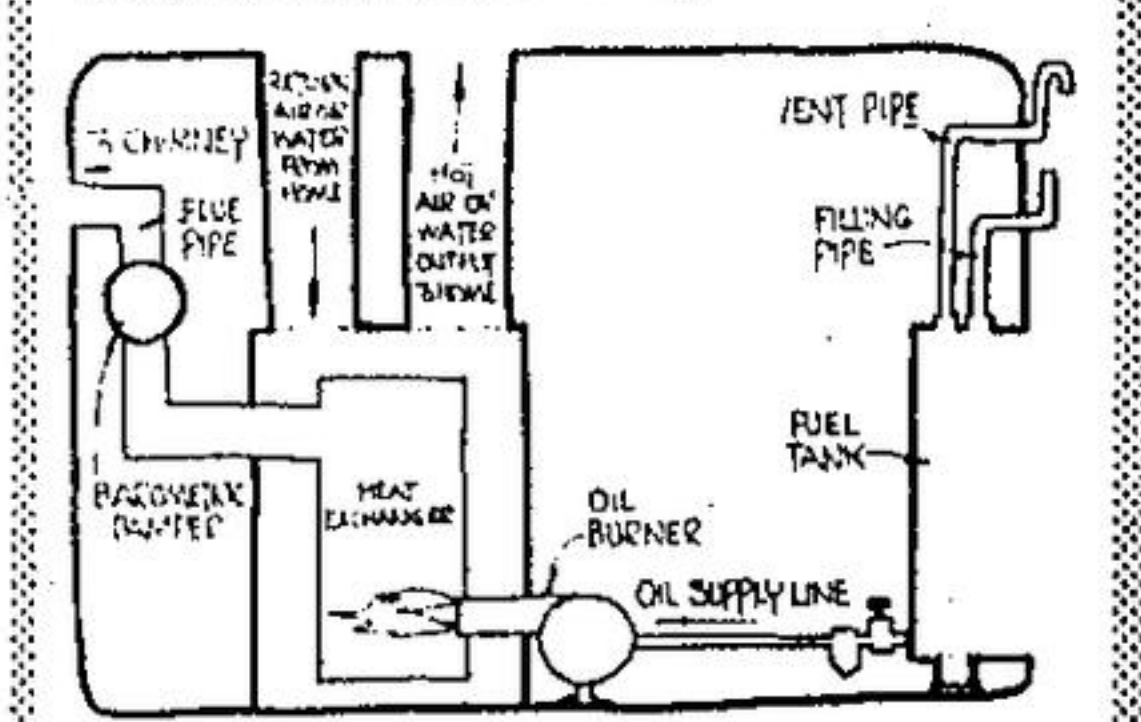
The overhaul should include the exhaust breeching, damper, stack controller or cutoff safety device, chimney base, interior of furnace, fan, air filters, oil filters, oil burner and its accessories. The flue gas temperature, carbon dioxide content, smoke number and over-fire draft should all be measured with instruments. The furnace efficiency should be calculated and burner adjustments made if the efficiency is not satisfactory.

With a gas furnace, the serviceman's three visual checks should cover the vent connector, draft hood and chimney base. He should also check the burner's performance, which takes in the pilot light, flame, burner and air grill.

The annual overhaul of a gas furnace should include inspection of the heat exchanger, a thorough cleaning of the interior, and inspection of the fan and the air filters, and also the water systems (if any).

With both oil and gas furnaces, the serviceman can further improve efficiency in other ways. If necessary, he should adjust the speed of air circulation and the timing of the fan's operation. Another improvement may be to install a smaller orifice if tests show that the furnace is wasting fuel by producing too much heat.

In addition to all this, it pays to keep an eye on the furnace yourself to see whether it is working properly. Don't try to make adjustments; they could be risky both for the furnace and yourself. Some practical steps you can take are in ensuring that conditions in the home help the furnace to work efficiently, especially by keeping dirt out of the system, and by promoting proper air circulation both for the furnace burner and the delivery of hot air. More about this and the other aspects of furnace care will be found in *The Billpayer's Guide to Furnace Servicing*.



We Rent Everything
Garden Equip., Building Equip., Painting Equip., Industrial Blowers, House Insulation Equip.
MILTON RENTALS
WE SELL INSULATION
878-1880

REDDOT REALTY LTD REALTOR
MLS
• Custom Homes • Lots & Acreages
• Recreation Properties • Resales
877-0173 453-4442

HONDA SALES & SERVICE
• Generators • Tilters
• Water Pumps
Available At
GORDON'S SERVICE CENTRE
877-5365

FORD BROTHERS A COMPLETE LINE OF SWIFT'S FEEDS
• SEED CLEANING
• GRASS SEEDS
• SEED GRAIN
• FENCE SUPPLIES
• FARM FERTILIZER
• LAWN & GARDEN SUPPLIES
• PURINA DOG & CAT FOODS
• MASTER HORSE FEED
BALLINAFAD 877-2008

CANADIAN NORTHWOOD MOVING & STORAGE
"Moving Canadians Ahead"
R (RAY) BABIN, MGR.
787 Griddon Rd. BRAMPTON 451-4412

IS YOUR INSURANCE UP TO DATE?
CALL US
General and Life Insurance
DENNY'S INSURANCE AGENCY
853-0150
After Hours 853-2545 17 Mill St. W. Acton

T.S. Electric Electric Contractors
A Division of W.A.T. Electric Ltd.
• POLE LINE CONSTRUCTION
• AERIAL LIGHTING
• ELECTRIC HEATING
• TRUCKS TO SERVE YOU
Ind. Comm. Res.
ARMSTRONG AVE. 877-2413

THREE BEDROOM SPLIT LEVEL
A three bedroom split level family home with all the extras is featured in this plan of the week.
The exterior shown here is clad in wood siding, however you could use aluminum or vinyl according to your taste. Finish off the roof with cedar shingles, shakes or install tile roofing.
Modern tile roofing is available in colors to match your decor, is fireproof and beautiful. While initially expensive to install, these tile are usually economical in the long-term. If you're thinking of tile, check with a building supply dealer about prices, and special installation instructions.
Illustrated here is a double carport, which can be covered in as a double garage, depending on your needs. The covered front entry, just steps from the carport has a convenient guest closet.
Three steps lead from the foyer to the living room, with its vaulted ceiling and a wood-burning fireplace. The dining room has a built-in alcove to accommodate a china cabinet, or have shelves or a cabinet custom built right into the wall to match your room decor.
The modern kitchen and nook have plenty of room for all the modern conveniences which make meal preparation a joy. Down three steps from the kitchen is the family room, which depending on the design you choose can be observed from the kitchen. There's another fireplace here, and sliding glass doors to the backyard.
Put an outdoor patio here, and summer Bar-B-Que's will be conveniently close to the kitchen. Just off the family room is the laundry room, with an outside door, and roughed-in plumbing. This design would be a delight to the gardener, to clean before entering the family area.
On the same level as the family room, there's a large unfinished area which would be perfect for a workshop, den, or even an extra guest bedroom.
Up three steps from the kitchen nook area is the upper bedroom floor. The master bedroom has a make-up vanity built in, its own three piece shower ensuite, and walk-in closet. The other two bedrooms, each with frontal-view windows share a common three piece bath.
With a total of almost 1800 square feet of usable living area, this home design offers many of the required extras for today's growing family.
Plans for design No. P-4-3-217 may be obtained at a cost of \$88 for a set of three and \$9 for each additional copy. Allow \$2 to cover postage and handling.
To view more than 100 well-designed quality homes of every type, send for the current publication of the Home Plan Catalogue, available for \$2.60 (\$2.25 plus 35c postage and handling). Make all cheques and money orders payable to

★ Patio Furniture
★ Gas Barbeques
★ Woodburning Stoves
Furnaces & Fireplaces
Jim Bowles
877-0551
J. BOWLES STOVE CO. LTD.
1 MOUNTAINVIEW RD. N., GEORGETOWN

the Cabinet Answer
CAN HELP YOU MAKE YOUR KITCHEN DREAMS COME TRUE!
Designed For Your Kitchen
QUALITY BUILT KITCHEN CABINETS
Professional Designing and Installations 456-0580

CALL STEFAN
For Information Or Free Estimate On
CERAMIC TILES
Supplies — Installation
Bathrooms, Kitchens
Walls, Floors
877-4795

ACTON PRECAST CONCRETE LTD. MANUFACTURERS
• Septic Tanks • Materials
• Wrapping Bed • Other Concrete Products
• Well Tiles
R.R. 2 Acton 853-1529

LEC MAINTENANCE & ELECTRICAL SERVICE
• Industrial
• Commercial
• Residential
• Rural Line Hook-up
853-3519
L E C MAINTENANCE & ELECTRICAL SERVICE

Flikkema CREST HARDWARE
Black & Decker Weed Eaters Lawn Mowers
Gardening Hand Tools
Top Quality Selection Paints & Stains
58 MAIN ST. S. Formerly Parr's Hardware

HILLSIDE SAND & GRAVEL
• GENERAL HAULAGE
• SAND & GRAVEL
• TOP SOIL
• FILL
Prop. Bud Haines
3 Durham 877-3302

MAKE YOUR BACKYARD A POOL PARADISE SIMPLICITY POOL & PATIO
TREJAN POOLS
Quality you'll enjoy forever!
• Florida Hot Tubs
• Perflex Filter Systems
• Hayward Pumps & Filters
878-4151

Vern's Masonry Construction Fireplaces a Specialty
• CHIMNEY REPAIRS
• BRICK & BLOCK
• CERAMIC TILES
• STONEMWORK
• FRANKLIN AND PRE-FABS INSTALLED
R.R. 1 Acton 853-3826

TERRY McMULLEN General Contractor
• Patios Sidewalks and Sloops
• Chimneys
BUILT & REPAIRED
Plaster repair Stucco
INTERIOR & EXTERIOR
CALL ME 853-3911

New Home of The Week, c/o The Herald
103 Main St. South, Georgetown