

YOUR-

TIPS ON HOW TO REPAIR

NOW: We are Halton Hills' dealer for International Harvester Garden Tractors



Available 5-16 H.P.

Your International Harvester dealer has been helping people with these gardening chores for years. He can show you one of the most complete lines of lawn and garden equipment available anywhere. Top quality machinery that take the strain out of outdoor work. Equipment built to last. Built to stay new longer after the others. This is equipment made to serve you year in and year out.



INTERNATIONAL HARVESTER CANADA

Aware of your needs... Master Feeds
Trafalgar Road at Stewarttown

COURTESY OF HOME HARDWARE

Here are tips and instructions on patching and repairing concrete. Take time to read thoroughly. Following these instructions can save time, money and effort. It can also help you end up with a neater, more satisfactory job—with far less waste.

1. REPAIRING HAIRLINE CRACKS

■ Hairline cracks in concrete can be repaired with a grout made of portland cement and water. Just enough water should be added to the portland cement to form a thick paste.

■ Moisten the old concrete along the hairline crack with water for several hours before the grout is added. Moistening the concrete prevents it from drawing the water from the grout, thus drying out the mixture. Although the old concrete should be moist, no water should be standing on the surface when grout is applied.

■ After the hairline crack has been moistened and thoroughly cleaned, apply the grout with a putty knife or pointing trowel. Force the grout into the crack as much as possible. Then smooth it off level with the original concrete.

■ Allow the patched area to dry about 2 hours in the open. After about two hours cover the area with a piece of plastic sheeting or a board.

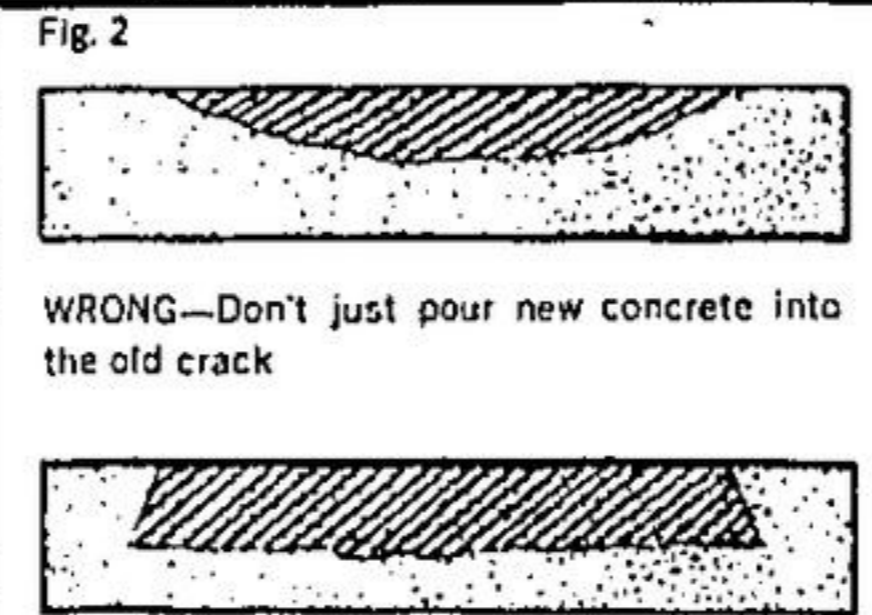
■ Keep the area covered for approximately 5 days, lifting the covering once each day and sprinkling the repaired area with water.

2. REPAIRING CRACKS IN SIDEWALKS

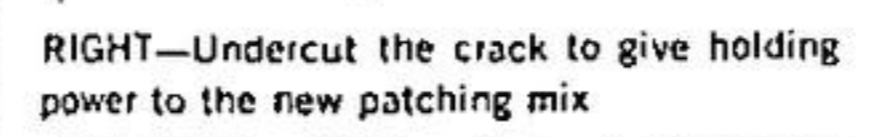
■ Cracks in sidewalks that are larger than hairline cracks must be enlarged before they can be satisfactorily repaired. It is suggested that the crack which is to be repaired be enlarged along its entire length with a cold chisel and a hammer, (Fig. 1).



Enlarge crack with cold chisel and hammer before attempting to repair it



WRONG—Don't just pour new concrete into the old crack



RIGHT—Undercut the crack to give holding power to the new patching mix

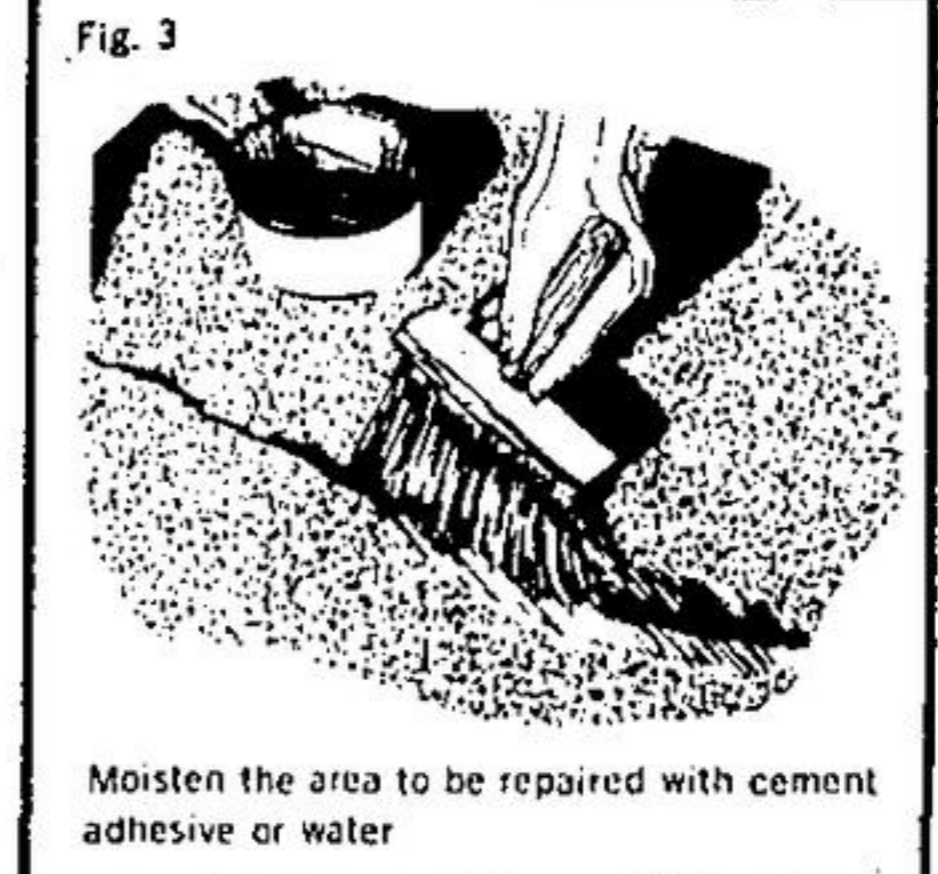
■ The crack must be made wider at the bottom than at the top, (Fig. 2). This is known as undercutting. It helps to keep the new concrete bonded with the older concrete.

■ This undercutting, (Fig. 2), should be done to a minimum depth of 1". The depth of the undercutting will depend on the size and depth of the crack to be repaired.

■ After the crack has been thoroughly undercut, remove all loose material and brush the area with a wire brush.

■ Use a garden hose or a tire pump to blow or wash away the dust in the crack.

■ The new concrete patch will hold better if a concrete adhesive is first used. There are many



Moisten the area to be repaired with cement adhesive or water

types of concrete adhesives. Acrylic resin, a milky fluid, is one popular type. This adhesive should be brushed into the undercut area and allowed to dry until it becomes tacky, (Fig. 3).

■ If you do not use a cement adhesive, the area to be patched should be thoroughly brushed and soaked with water. Moistening the area prevents the old concrete from absorbing all the moisture in the concrete patch. Although it should be moist, no water should be standing on the area where the patch is to be applied.

■ Premixed concrete patch is usually recommended for small patching jobs. If you use ready-mix concrete patch, all you need add is water.

■ If you mix your own concrete patch, you should use one part portland cement to two and a half parts of fine, clean sand. Heavier concrete patch jobs will call for one part of portland cement to two parts of sand to three parts of gravel.

■ Tamp the concrete patch sand mix tightly into the undercut area. Be sure to fill all cut away areas completely.

■ When the mixture begins to set, smooth it down with either a metal trowel or a wooden float, (Fig. 4). A metal trowel should be used if a smooth finish is desired. If a rough surface is preferred, a wood float should be used for the finishing job.

■ After the patch job is completed, allow it to dry in the open for approximately two hours. Then cover the patched area completely with plastic sheeting or boards.

■ Keep the area covered for approximately five days, lifting the cover once each day to wet down the repaired area. This permits the new concrete to cure correctly.

3. REPAIRING CONCRETE DRIVEWAYS

■ A crack in a concrete driveway is repaired in basically the same way as a crack in a concrete sidewalk. However, since the driveway must carry heavier weight loads, the repaired area must withstand much greater pressure.

■ A gravel mix, rather than a sand mix, should be used for repairing concrete driveways. This is the mix previously described which is one part portland cement, two parts sand and three parts gravel.

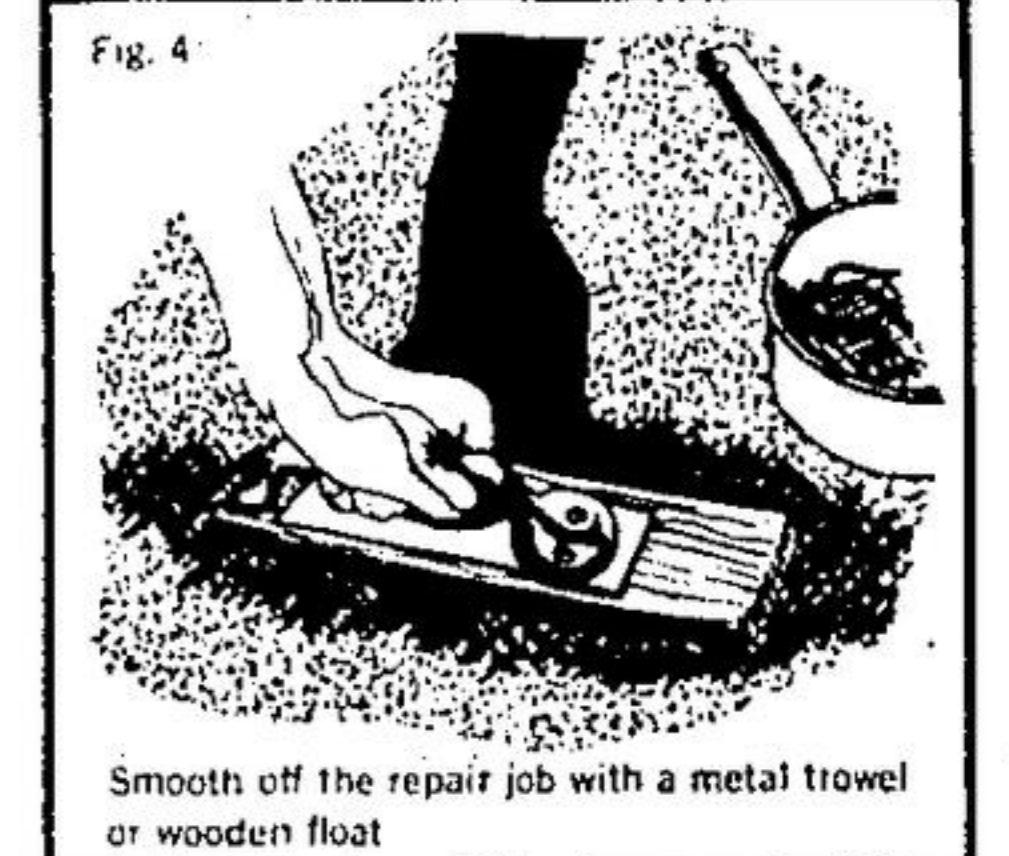
■ When the crack has been thoroughly cleaned and undercut, (Fig. 2), the cement adhesive should be brushed into the undercut area, (Fig. 3).

■ It is usually wise to undercut the cracked area to a greater depth and to make the cracks considerably wider than would be necessary when repairing a sidewalk. This extra depth and width increases the strength of the repair job.

■ All of the steps outlined in repairing a crack in a sidewalk should be followed exactly in repairing a crack in a concrete driveway.

■ After the gravel mix has been applied, level the new patch mix off with a trowel or float, (Fig. 4), as you would do when repairing a sidewalk.

■ The patched area should again be covered for a period of five days, wetting down the area once each day.



Smooth off the repair job with a metal trowel or wooden float

■ It is never wise to drive an automobile over the patched area for at least five days. This gives the newly patched section time to thoroughly dry before it is required to carry the heavy load of an automobile or truck.

4. REPAIRING CRACKS AND HOLES IN CONCRETE WALLS

■ Repairing a crack in a concrete wall requires basically the same steps as repairing a crack in a sidewalk or driveway.

■ The cracked area must first be undercut and widened in basically the same way as previously described, (Fig. 2), for a sidewalk.

■ The widening and undercutting can be done with a cold chisel and hammer, (Fig. 5). The extent of the widening and the depth of the undercutting will depend on the size and length of the crack.

■ After all loose material has been chipped away, the undercut area around the crack, (Fig. 6), should be thoroughly cleaned with a stiff wire brush. Do not brush the area enough to smooth off the edges. The rough surface created by the chiseling provides a good bond for the new concrete which is to be applied.

We Rent Everything
Garden Equip., Building Equip., Painting Equip., Industrial Blowers, House Insulation Equip.
MILTON RENTALS
WE SELL INSULATION
878-1880

REDDOT REALTY LTD REALTOR
MLS
• Custom Homes • Lots & Acreages
• Recreation Properties • Resales
877-0173 453-4442

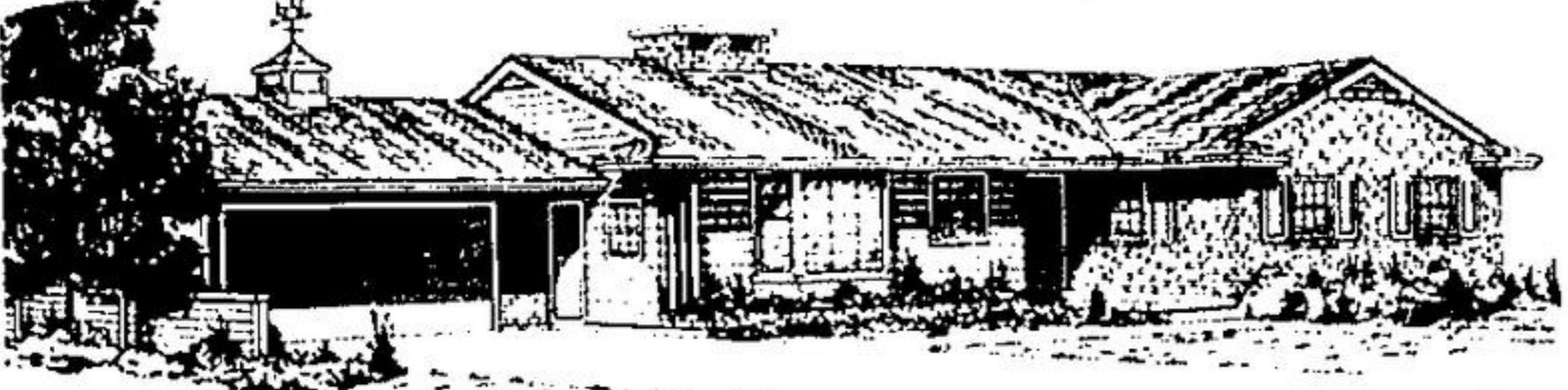
HONDA SALES & SERVICE
• Generators • Tilters
• Water Pumps
Available At
GORDON'S SERVICE CENTRE
877-5365

FORD BROTHERS A COMPLETE LINE OF SWIFTS FEEDS
• SEED CLEANING
• GRASS SEEDS
• SEED GRAIN
• FENCE SUPPLIES
• FARM FERTILIZERS
• LAWN & BARN SUPPLIES
• PUMPA DOG & CAT FOODS
• MASTER HORSE FEED
BALLINAFAD 877-2008

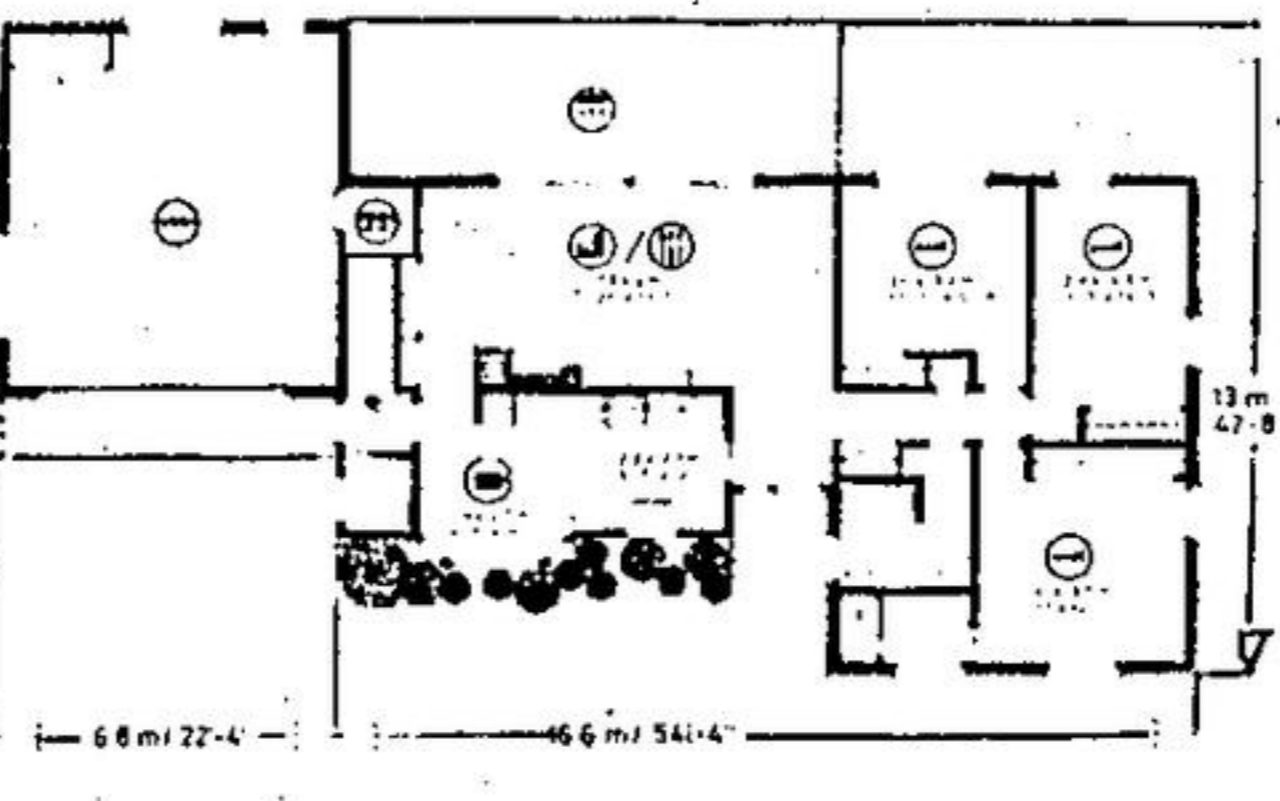
CANADIAN NORTHWOOD MOVING & STORAGE
"Moving Canadians Ahead"
R (RAY) BABIN, MGR.
787 Glidden Rd. BRAMPTON 451-4412

IS YOUR INSURANCE UP TO DATE?
CALL US
General and Life Insurance
DENNY'S INSURANCE AGENCY
853-0150 17 Mill St. W. Acton

T.S. Electric Electric Contractors
A Division of W.A.T. Electric Ltd.
• POLE LINE CONSTRUCTION
• AERIAL LIGHTING
• ELECTRIC HEATING
• TRUCKS TO SERVE YOU
Ind., Comm., Res.
ARMSTRONG AVE. 877-2413



PLAN No. 65-1438
• 132.8 sq. m./m.ca. // 1429 sq. ft./pi.ca.
• 23.4 m. // 76 ft./pi. 8 in./po.



REAR VIEW BASEMENT BUNGALOW

This traditional brick bungalow, with three bedrooms and a full basement, possesses all of the owner appeal so characteristic of its style, plus a number of conveniences which make it an outstanding design. It is ideally suited to the wide rear view lot.

The low profile exterior, finished in brick veneer, horizontal siding and a shingle roof, is complemented by the prominent bay window, shutter-accented windows, brick chimney and cupola with weather vane -- all features well co-ordinated to create an harmonious whole.

The weather-sheltered porch and entrance lead into a compact foyer and naturally forward into the spacious but convivial living-dining room combination, which features a wide stone fireplace and built-in bookshelves and sliding glass doors leading onto a large rear patio.

The large and well-planned galley-style kitchen connects to a charming and convenient breakfast nook. The nook contains the bay window, allowing for some charming interior decor and furniture arrangement. The two-piece vanity bath is immediately accessible from the nook, as is the stairwell to the full basement.

All three bedrooms are positioned around the central bath and linen storage area, and all have generous closet storage and excellent natural light. The master has a three-piece ensuite with shower.

The laundry-utility complex is located in the full basement, which provides abundant space for the future development of family and/or recreation rooms.

A double closed garage, with built-in workbench and closet storage completes the convenience features of this eye-appealing and functional design.

Plans for design No. 65-1438 may be purchased either by single set, at a cost of \$70. for the first set and \$10. for each additional set, or by the package. A five-set plan package, including the first set, is economically priced at \$100. and an eight-set package, also including the first set, is only \$125.

Whichever method you choose, please include \$4. for postage and handling. Send for the current edition of Select Home Designs, Series No. 36, featuring imaginative decorating and home improvement ideas, plus 350 quality home plans of every type. Available for \$2.25 (\$1.75 plus 50 cents postage and handling).

To order any of these items please send cheque or money order payable to the Home of The Week. Address to:

New Home of The Week, c/o The Herald
103 Main St. South, Georgetown

★ **Patio Furniture**
★ **Gas Barbeques**
★ **Woodburning Stoves**
Furnaces & Fireplaces
Jim Bowles
877-0551
J. BOWLES STOVE CO. LTD.
71 MOUNTAINVIEW RD. N., GEORGETOWN

the Cabinet Answer
CAN HELP YOU MAKE YOUR KITCHEN DREAMS COME TRUE!
Designed For Your Kitchen
QUALITY BUILT KITCHEN CABINETS
Professional Designing And Installations 456-0580

CALL STEFAN
For Information Or Free Estimate On
CERAMIC TILES
Supplies - Installation
Bathrooms, Kitchens
Walls, Floors
877-4795

ACTON PRECAST CONCRETE LTD. MANUFACTURERS
• Septic Tanks • Materials
• Weeping Bed • Other Concrete Products
• Wall Tiles
R.R. 2 Acton 853-1529

LEC MAINTENANCE & ELECTRICAL SERVICE
• Industrial
• Commercial
• Residential
• Rural Line Hook-up
853-3519
LEC MAINTENANCE & ELECTRICAL SERVICE

Fikkema CREST HARDWARE
Black & Decker Weed Eaters Gardening Hand Tools
Lawn Mowers
Top Quality Selection Paints & Stains
98 MAIN ST. S. Formerly Purrs Hardware

HILLSIDE SAND & GRAVEL
• GENERAL HAULAGE
• SAND & GRAVEL
• TOP SOIL
• FILL
• Prop. Bud Haines
3 Durham 877-3302

MAKE YOUR BACKYARD A POOL PARADISE
SIMPLICITY POOL & PATIO
TREJAN POOLS
Quality you'll enjoy forever
• Florida Hot Tubs
• Perflex Filter Systems
• Hayward Pumps & Filters
878-4151

TERRY McMULLEN General Contractor
• Patio Sidewalks and stoops
• Chimneys
BUILT & REPAIRED
Plaster repair Stucco
INTERIOR & EXTERIOR
CALL ME 853-3911

DO IT NOW
White Prices Are Low
STORM DOORS AND WINDOWS
Sales & Replacement
DELREX ALUMINIUM
877-5383 R.R. 4, Georgetown

Condor TECTONIC insulation
"Where you can see and feel the difference"
• Walls, Basements,
• Interior or Exterior
• Insulation Complete With Decorator Finish
FOR INFORMATION AND ESTIMATES CALL
Acton Georgetown Milton 877-5566
Brampton 453-1991

Quality Custom Built Homes
Build To Our Specs or Yours
BURNETT HOMES LTD.
877-2487

GLASS & MIRROR
CUT TO SIZE
Thermo Glass Supplied & Installed
LEON GLASS
20 Draper Street
877-4655 Evenings

Vern's Masonry Construction
Fireplaces a Specialty
• CHIMNEY REPAIRS
• BRICK & BLOCK
• CERAMIC TILES
• STONEMWORK
• FRANKLIN AND PRE-FABS INSTALLED
R.R. 1 Acton 853-3826

Mavalk
• Automotive Parts & Accessories
• Industrial Supplies
• Firefighting Equipment, Sales & Service
MAVALK SALES LTD.
877-0143 ★ 877-0144