


YOUR

Quality Custom Homes by
GEORGE REID
CONSTRUCTION LTD.



1700 sq. ft. for only \$39,900

Can you imagine this 1700 sq. ft. home situated on your lot? This home offers you 3 bedrooms, large eat-in kitchen, living room and family room etc. Plaster walls, oak kitchen, shag carpet, Armstrong Floors are just a few of the outstanding features.

We also have a variety of other plans to suit different tastes.

Custom house builders for over 30 years.

60 Regal Road Guelph
Orin Reid (519) 821-1820
After Hrs. (519) 824-0874
Please Phone Collect

FIRE IS SO FINAL:
It can happen to you



DICON AND BRK SMOKE DETECTORS

WE HAVE A COMPLETE LINE OF FIRE EXTINGUISHERS FOR THE HOME, AUTO AND INDUSTRY. WE ALSO HAVE ULC APPROVED SMOKE DETECTORS FOR YOUR PERSONAL SAFETY.

Mavalk
SALES LTD.
13 Armstrong Ave. Georgetown
877-0143 ★ 877-0144



ENJOY DINING AL FRESCO all year long with a handsome Photowall by Seandecor, producers of Photowalls, Photodisks, and Posters. This easy-to-install wallcovering comes in two sizes: large, 12'8" long by 9' high, or medium, 6'4" long by 8' high and is available in beautiful color or black and white.

The Energy Savers
by Richard Charles

See you later, radiator?

If you want to keep your home heating system working for you, don't turn your back on it during the off-season, and then cross your fingers and hope it behaves itself when the cold weather comes back.

This advice applies as much to the old-try-and-true heating system with hot-water or steam radiators as to a more modern electronic marvel. In fact, you may not be aware of any trouble, and yet by letting heat go to waste before or after it reaches the radiator, it's never too soon to check over the system and take some simple precautions against waste. But, of course, you need to keep an eye on it in winter too.

With hot-water heating, the water is pumped through tubes in a furnace, where it is heated to a maximum of 82°C (180°F), and then piped to radiators throughout the home. The water cools in the radiators and then returns to the pump and starts again.

An expansion tank and relief valve keep the water pressure from going too high. Another valve prevents the flow of water when the circulating pump stops.

Here are some points to watch in getting the best from hot-water heating.

Make sure that there's an air space in the expansion tank (see the operator's manual or ask a heating expert).

Use a reflector to direct heat into the room.

Insulate the water pipes leading to and from the furnace, especially where they pass through areas that don't need heat.

Keep up the water level throughout the system, check the water-level gauge on the furnace before you start up in the fall.

Let any air out of the system (while it is running) by opening the vent on each radiator in turn, but close the vent as soon as water starts to spurt out.

Keep radiators clean, and don't block them off from the room with furniture or drapes.

When painting radiators, use a matte or satin finish, not metallic paints or glossy light colours.

Use a reflector, such as aluminum foil, on the wall behind the radiator to direct heat into the room.

The steam heat system is similar in some ways, but in this case the water is heated to 100°C (212°F) in a boiler. The steam from this boiling water then rises of its own accord through pipes to the radiators. When it cools and condenses, the water returns to the boiler by gravity.

You can help the system to stay in good working order in the following ways.

Flush and clean out the boiler once a month during the heating season.

Keep the water at the manufacturer's recommended level. Too much water makes the boiler less efficient, and too little makes the heating unit shut off.

Look for leaks at the joints, where steam and heat can escape.

Insulate pipes as you would with hot-water heating.

Check the radiators. If there's a cold one, look for faults in air valves or vents in the system.

Take care of steam radiators in the same way as hot-water radiators.

If you want to know more about keeping your home warm in winter, including the use of hot-water or steam heat, write to Box 3500, Station C, Ottawa, Ontario, K1Y 4G1, for a copy of 100 ways to save energy and money in the home. It comes from the Office of Energy Conservation, Department of Energy, Mines and Resources.

Quality Custom Built Homes
Build To Your Specs Or Ours
BURNETT HOMES
LTD.
877-2487

VVAW
Vern's Masonry Construction
Fireplaces a Specialty

- CHIMNEY REPAIRS
- BRICK & BLOCK
- CERAMIC TILES
- STONEMWORK

R.R.1 Acton 853-3826

CANADA TRUST
Mortgages

FROM 10 1/2% Prime Rate

29 Main St. S. 877-2266

Dave McMullen
GENERAL CONCRETE

Floors
Walks
Patios
Driveways
Pool Decks

Dave's Home Improvements.
853-2726

Craig's Appliance
Centre
Quality Used
Appliance Sales

SERVICE & PARTS FOR ALL MAJOR APPLIANCES

205 Main-rear 878-5228

CABINETS
CUSTOM MADE
QUALITY BUILT
KITCHEN CABINETS

Professional Designing and Installations

CABINET ANSWER LTD.
Guelph, Ont. (519) 824-0874
456-0580

FORD BROTHERS
A COMPLETE LINE OF SWIFTS FEEDS

- SEED CLEANING
- GRASS SEEDS
- SIFTO GRAM
- FENCE SUPPLIES
- FARM FERTILIZERS
- LAWN & GARDEN SUPPLIES
- PURINA DOG & CAT SUPP.
- MASTER HORSE FEED

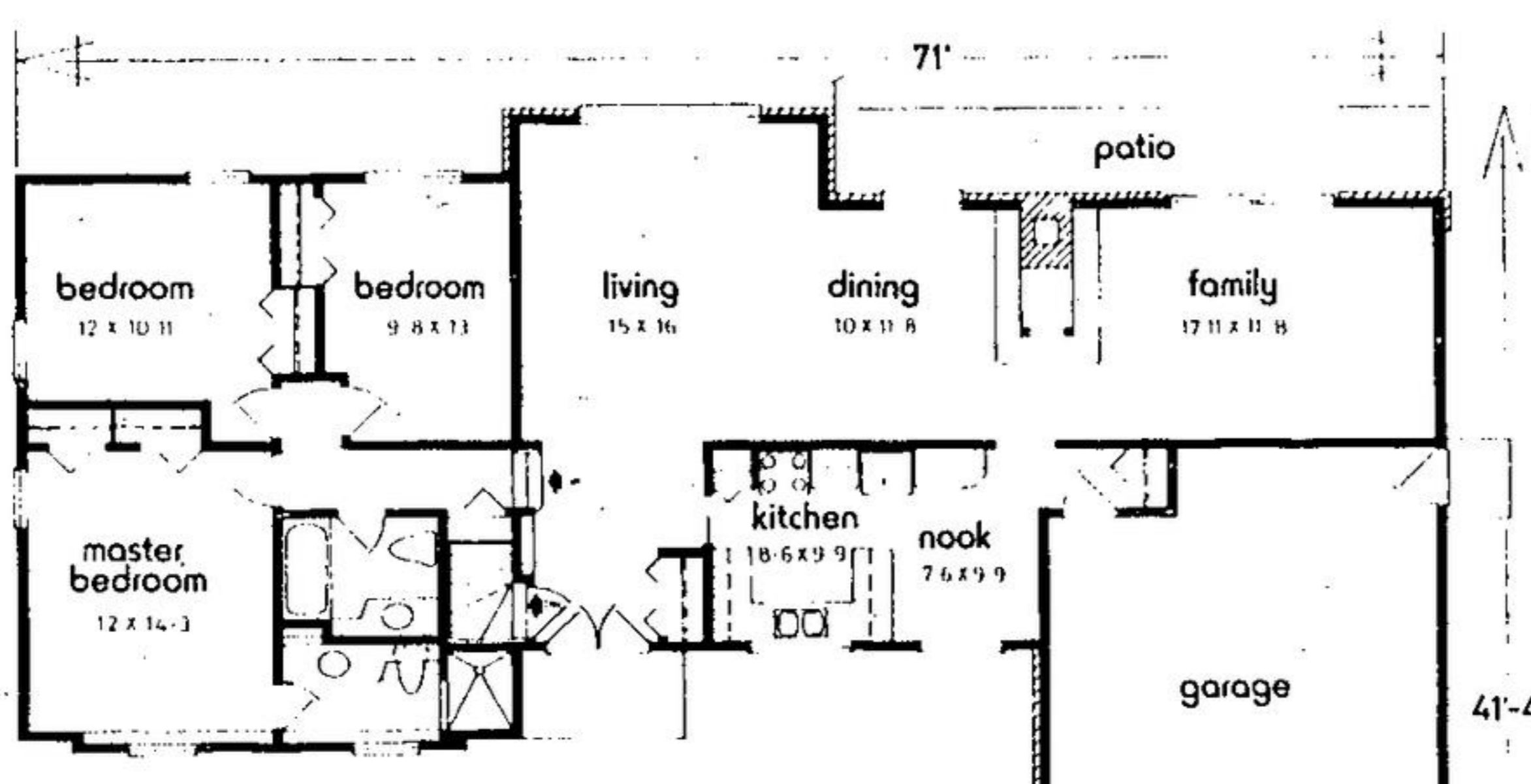
BALLINAFAD 877-2008

HILLSIDE SAND & GRAVEL

- GENERAL HAULAGE
- SAND & GRAVEL
- TOP SOIL
- FILL

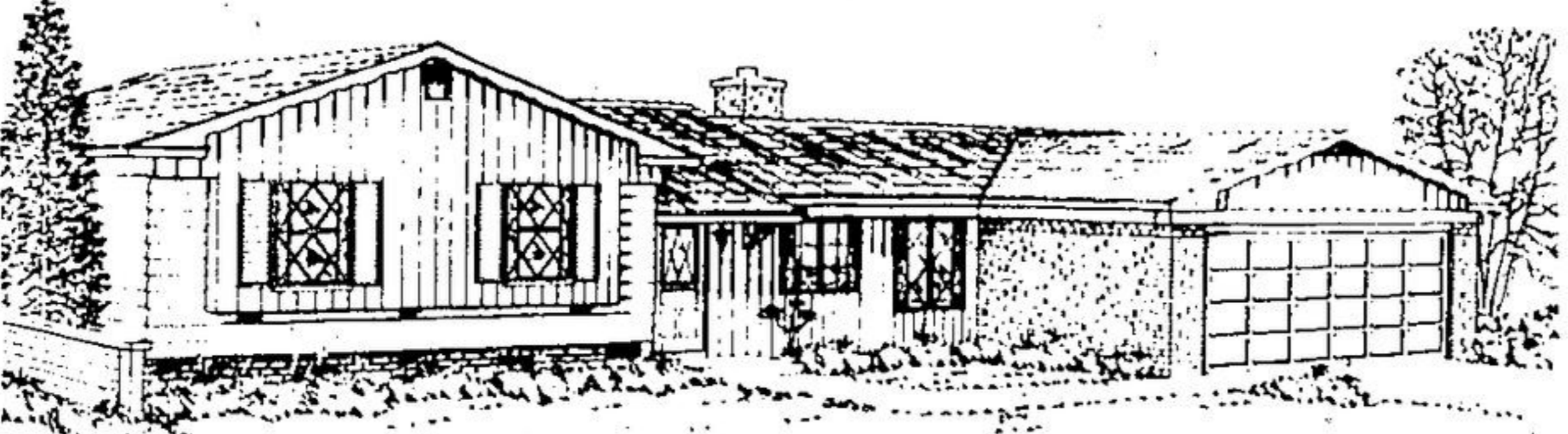
Prop: Bud Haines
3 Durham 877-3302

NEW HOME OF THE WEEK



PLAN N° 65-1646
AREA: 1646 sq. ft.
WIDTH: 71 ft.

bedroom 12 x 10 1/2
bedroom 9 8 x 11
living 15 x 16
dining 10 x 11 8
family 17 1/2 x 11 8
kitchen 10 6 x 9 9
nook 7 6 x 9 9
master bedroom 12 x 14 3
garage 41'-4"



SPACIOUS SIDE SPLIT

Here's an ever popular split level design which harmonizes rustic and contemporary elements into a pleasing exterior, and which is ideally suited to the wide frontage, rear-view lot. The mixed vertical and horizontal siding, brick veneer and shingle roof, and the shuttered, diamond-paned windows integrate well with the low-profile characteristics of the ranch-style bungalow.

The weather-sheltered country-style entrance leads into a compact foyer, and naturally forward into the large living-dining room combination, which is designed for relaxed and comfortable entertaining.

The dining room and large family room are divided by a large and dramatic fireplace, which is open to both rooms - providing for added conviviality when entertaining and allowing barbecue meals indoors. The family room connects to a wide rear patio via sliding glass doors for convenient outdoor living in line weather.

The well-planned U-shaped kitchen and breakfast nook separate via snack bar counter, making possible a variety of interior decor possibilities.

The bedroom and bathroom complex is elevated three risers from the main level. All three bedrooms are large and have ample closet space and excellent natural light. The master has a three-piece ensuite with shower.

A full basement, providing abundant space for the future development of additional rooms or recreational facilities; and a double garage, with access to a small mud room, complete the convenience features of this attractive and comfortable home.

Plans for design No. 65-1646 may be purchased either by single set, at a cost of \$70, for the first set and \$10, for each additional set, or by the package. A five-set plan package, including the first set, is economically priced at \$100, and an eight-set package, also including the first set, is only \$125.

Whichever method you choose, please include \$4. for postage and handling.

Send for the current edition of Select Home Designs, Series No. 36, featuring imaginative decorating and home improvement ideas, plus 350 quality home plans of every type. Available for \$2.25 (\$1.75 plus 50c postage and handling).

To order any of these items please send cheque or money order payable to the Home of the Week. Address:

New Home of The Week, c/o The Herald
103 Main St. South, Georgetown

Your Ad
Could Fill
This Spot

CANADIAN NORTHWOOD
MOVING & STORAGE

"Moving Canadians Ahead!"

R. (RAY) BARIN, MGR.
287 Glidden Rd. 451-4412
Bramalea BRAMPTON

TERRY McMULLEN
General Contractor

SPECIALIZING IN

- Patios Sidewalks and stoops
- Chimneys

BUILT & REPAIRED
Plaster Repair Stucco
INTERIOR & EXTERIOR

CALL ME 853-3911

T.S. Electric
Electric Contractors

A Division of W.A.T. Electric Ltd.

POLE LINE CONSTRUCTION
AERIAL LIGHTING
ELECTRIC HEATING
4 TRUCKS TO SERVE YOU
Ind. - Com. - Res.

2 Gairay Dr. 877-2413

SNAPPER
SALES & SERVICE

- LAWN MOWERS
- RIDING MOWERS
- GARDEN TILLERS

Available At:

GORDON'S SERVICE CENTRE
R.R.1
GEORGETOWN 877-5365

Leave the fuss... to us!

All Types Of Plumbing Repairs
Hotwater Heating
Bathrooms
New & Existing Homes
Res. & Comm.

R. BEENY
PLUMBING & HEATING
PHONE 877-9362

DELREX ALUMINUM
LIMITED

CONSERVE HEAT
Install
STORM DOORS-WINDOWS
Also REPLACEMENTS

Bank Financing
R.R.4 Georgetown 877-5383

REDDOT REALTY LTD
REALTOR

- Custom Homes • Resales
- Recreation Properties
- Lots & Acreages

877-0173 453-4442

WALTER BERGSMAN
PAINTER & DECORATOR

- COMMERCIAL
- RESIDENTIAL
- BRUSH UP POLYMER
- WALLPAPERING

INTERIOR - EXTERIOR

FOR FREE ESTIMATES CALL
877-4028
81 CHARLIE, GEORGETOWN

Van Gool's Nurseries
Landscaping

Planting Seeding Sodding
Fertilizer Peat Moss Palios
Weed Control Tool Delivered Etc.

BRAMPTON 453-9711
17 Sideroad West
Shalgrove

WESTINGHOUSE
Hi/Re/Li Heat Pump

Heats - Cools your home year round.
One system does it all... automatically!

COMMERCIAL - RESIDENTIAL

Call... **HORNET ENGINEERING**
855-4500 853-1906

Dollhouses are more than just kids' stuff for miniature lovers!

Have you ever dreamed of living the life of Marie Antoinette at Versailles, or the master of Windsor Castle, or one of the O'Hara's of Tara? Many adults are finding an enchanting way of making all of their dream-home fantasies come true in the wonderful world of miniatures!

Miniature collecting is the fastest-growing adult hobby in America today. It is steadily gaining on the front-runners: stamp and coin collecting.

Kathryn Falk opened one of the first miniature specialty shops, Mini Mundus located in New York City, when she spotted the trend three years ago.

"Women discovered that they could have in miniature what they couldn't afford in real life. Then they persuaded their husbands, fathers, and other members of the family to join in. Now the hobby has become more refined.

"People are creating family heirlooms that could be valuable investments.

"Very often grandparents will duplicate their family home for the grandchildren or parents will build their dream house in the country."



PERFECT BLEND OF PRETTY AND PRACTICAL—The "Fun Room" by interior decorator Emily Leaser is the perfect combination of casual elegance and practical comfort, from the deep-cushioned seating platform to the perky Roman plaid shades to the striking pattern of its easy-care GAFSTAR Brit-Bond floor from GAF in the beautiful Santa Lucia pattern.