

# YOUR

## How to select a lawnmower

Because lawn mowers are used more than any other piece of gardening equipment, it is important to choose these machines carefully. Ross Irwin, School of Engineering, Ontario Agricultural College, says prospective buyers should be aware that there are basically two types of lawn mowers.

There are advantages and disadvantages to both types, and like cars, there are wide ranges of prices and models. The reel-type lawn mower, commonly used by professionals, operates in a scissor-like fashion with the reel blade cutting against a bed knife.

This type of mower, if correctly adjusted and sharp makes the cleanest cut and it best for lawns that are meticulously maintained and cut

low. However, the reel-type is not as versatile as the rotary lawn mowers and is usually more expensive initially and more costly to maintain. The hand-operated reel-type lawn mower is ideal for small lawns. It will give a good cut, save gas and provide exercise.

The rotary lawn mower used by most homeowners cuts by the sickle-like impact of a whirling blade. This action bashes the grass off and causes the top of the blade to turn brown. Because of this, rotary lawn mowers are best used for grass control, rather than for lawn appearance.

Whatever type of lawn mower you select, get a good quality machine to make mowing as pleasurable as possible.

## Watch for mice damage on lawns

Winters with heavy and prolonged snow, such as in 1978, lead to damage by meadow mice. Dr. F.L. McEwen, environmental biologist at the Ontario Agricultural College, says that damage to Ontario homes and orchards has been reported.

Field mouse, meadow mouse and meadow vole are names used for the thick, dull-brown, short-tailed mouse that damages trees and shrubs. This rodent can convert last fall's attractive lawn into a tunneled and unattractive area this spring.

These mice spend the winter in sheltered areas, foraging beneath the snow to feed. They eat the tender bark of many deciduous trees and shrubs, and will attack evergreens if snow persists. They sometimes cut off small branches and remove bark from larger ones.

"Often they girdle the trees by removing the bark near the ground. Where girdling is extensive, trees may die unless bridge grafting is done early in the season. The trees also should be pruned to reduce their requirements for uptake of moisture."

Although lawn damage may appear extensive, this is seldom the case. Grass roots have not been destroyed and the damaged areas will recover. Dr. McEwen recommends raking these areas early in the spring to remove dead grass and debris.

Control is most effective if

practiced in the fall. If you have damage this year, you will likely have a mouse population next fall. Dr. McEwen says several rodenticides are available as baits, or in other formulations. Chlorphacinone, diphacinone and warfarin are available to homeowners under various trade names. Package labels will list the compounds contained and will give complete instructions on how these should be used. Rodenticides are poisonous and can be used safely and effectively only if instructions are followed.

factory control measure. "A well fertilized lawn mowed at 1 1/2 to 2 inches will keep crabgrass under control."

Crabgrass does not like shade so it can be smothered out with a thick, lush lawn. However, if there was crabgrass in the lawn last summer, it will soon be germinating, and a chemical weed control must be applied before germination.

Crabgrass herbicide is available in some fertilizers

to save you a trip over the lawn. Check the label to see if the active ingredient is present.

Bensulide (Betasar), Chlorfural (Daathal), Siduron (Tupersan), and Terbutol (Azak), are all herbicides recommended for crabgrass control.

Since the percentage of active chemical differs in the various commercial products available, follow manufacturer's directions and cautions on the label.

to save you a trip over the lawn. Check the label to see if the active ingredient is present.

Bensulide (Betasar), Chlorfural (Daathal), Siduron (Tupersan), and Terbutol (Azak), are all herbicides recommended for crabgrass control.

Since the percentage of active chemical differs in the various commercial products available, follow manufacturer's directions and cautions on the label.

## Relief from crabgrass

## The Energy Savers

How are you doing?

You hear a lot nowadays about the need to save energy. So, what do you think? Perhaps you are bothered by what you might get into if you become serious about saving energy. A few short questions printed below may help you to sort out your ideas. But first, we need one answer before the rest can make sense.

What do we mean by energy? It's the source of heating and cooling, lighting and motive power on which our homes, transportation, industries, farms and businesses depend in everyday life. We draw it mainly from fossil fuels (oil, gas and coal), water power and nuclear reactors. To a lesser extent from wind, tides and hot springs. Of course, almost all of this energy originates from the sun.

Now for some yea-and-no questions that you might ask yourself. (No prizes, we're trying to save, not spend, remember?)

Do you think the talk about an energy shortage is a lot of nonsense?

Can we go on using more and more energy as long as we can pay for it?

If we soon use up the world's available stock of fossil fuels, can we just switch to other sources of energy and continue as before?

To make a worthwhile saving in energy, do we have to raise our standard of living?

Is the call to save energy aimed only at "the little guy" while big users like industry and government go free?

If you have answered "no" so far, you must be on the right track.

Can you save money through saving energy?

Is it enough if you save energy simply by finding ways to stop wasting it?

Can you save energy without making your home too cold (or too hot)?

Are there ways of driving a car without being considered a waster?

Can labour-saving devices be used in conjunction with energy-saving ideas?

You probably won't be surprised to learn that the best answer to those questions is "yes".

If your home insulated at least to the minimum recommended level?

Is your home heating system cleaned and serviced at least once a year?

Do you draw only the amount of hot water you need when you do the washing, take a bath or shower, and so on?

Do you make a habit of switching off lights that are not in use?

Are you prepared to give up your bid for the local championship in the amount of garbage you throw out?

Do you try to save energy away from home, on the job, at school, wherever you go?

Can you give a solid "yes" to this last group of questions, but perhaps you haven't said a flat "no" either.

This interrogation may have raised still more questions in your mind. Don't worry. You can get answers by sending for a copy of 100 ways to save energy and money in the home to Box 15100, Station C, Ottawa, Ontario, K1V 4G1, and by looking out for this series of newspaper columns called "Energy Savers".

The question you don't need to ask is "Who, me?" This is for the young, old, married, single, property owners, tenants - the lot.

**Quality Custom Built Homes**  
Build To Your Specs Or Ours  
**BURNETT HOMES LTD**  
877-2487

**Vern's Masonry Construction**  
Fireplaces a Speciality  
• CHIMNEY REPAIRS  
• BRICK & BLOCK  
• CERAMIC TILES  
• STONEMWORK  
RR1 Acton 853-3826

**CANADA TRUST**  
Mortgages  
FROM 10 1/2% Prime Rate  
29 Main St. S. 877-2266

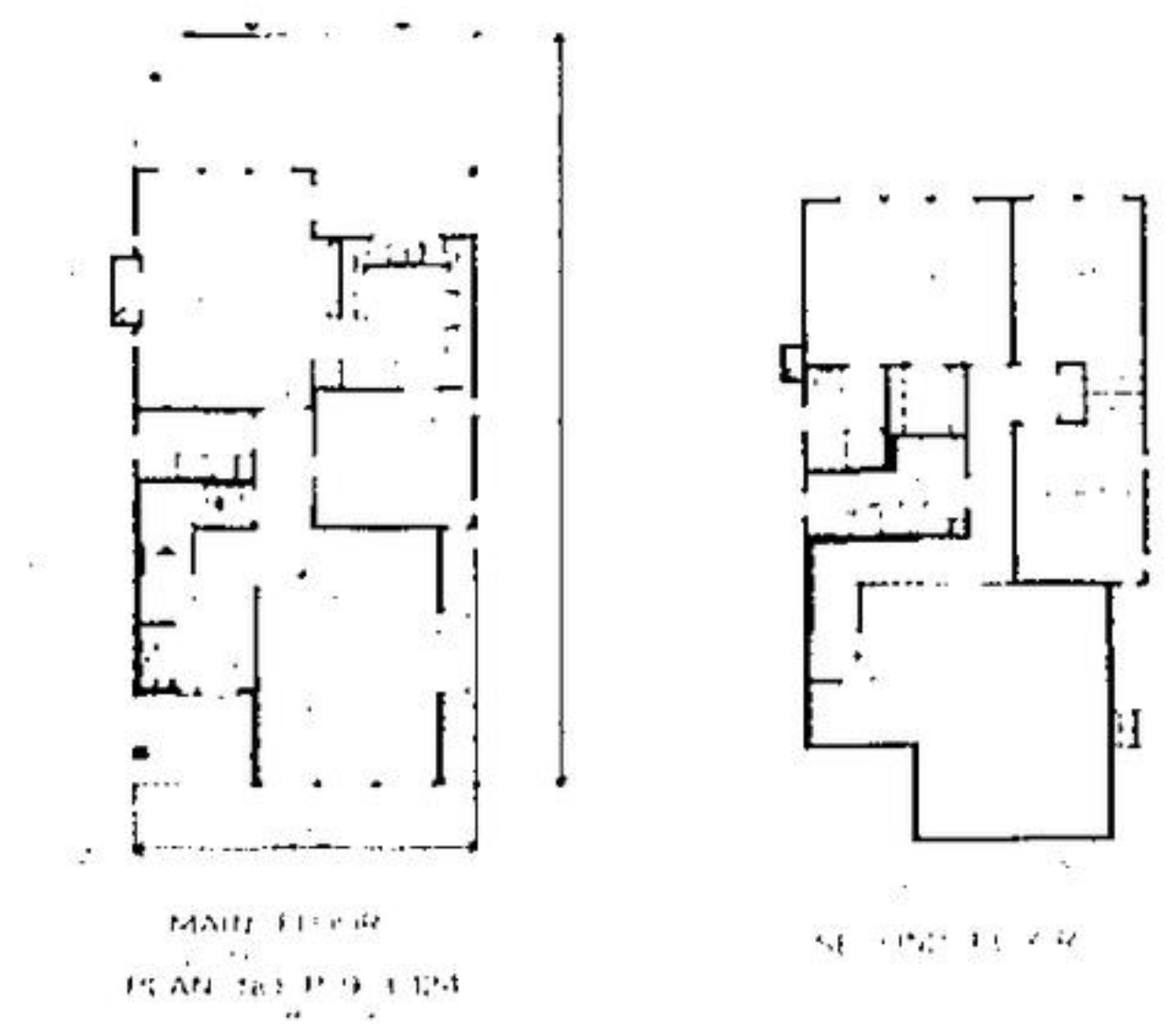
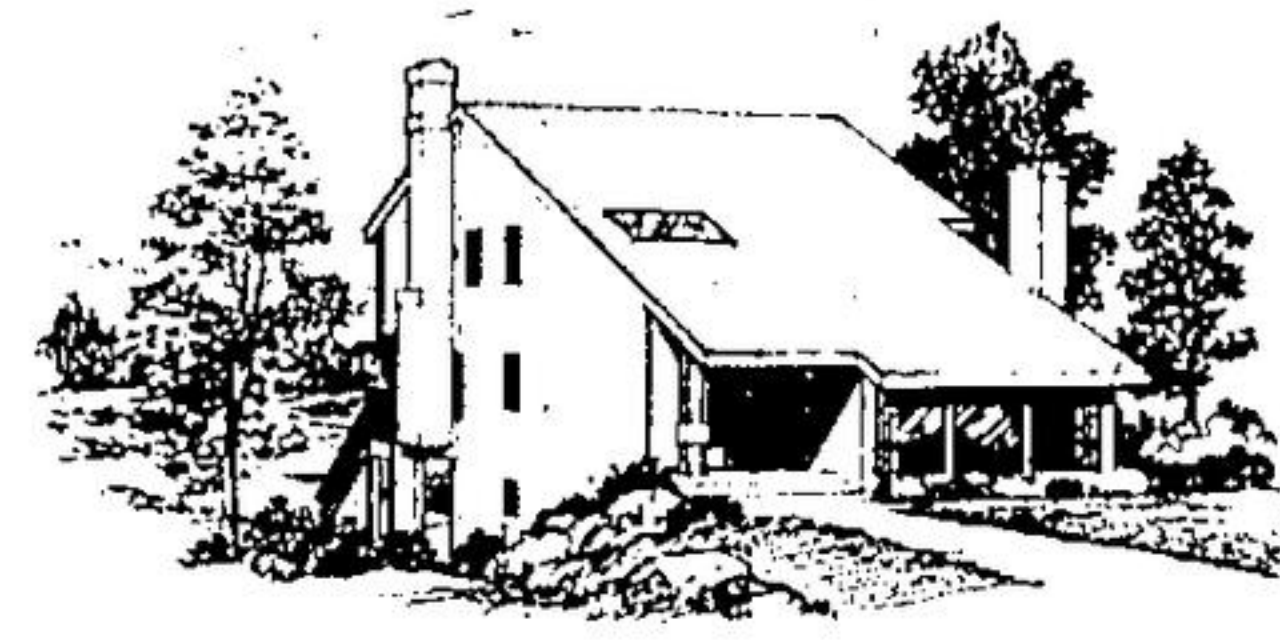
**Dave McMullen GENERAL CONCRETE**  
Floors  
Walks  
Patios  
Driveways  
Pool Decks  
Dave's Home Improvements 853-2726

**Craig's Appliance Centre**  
Quality Used  
Appliance Sales  
SERVICE & PARTS FOR ALL MAJOR APPLIANCES  
205 Main-rear 878-5228

**the Cabinet Answer**  
QUALITY BUILT KITCHEN CABINETS  
Professional Designing for the do-it-yourself installer  
CABINET ANSWER LTD.  
Guelphview Square Georgetown  
239 Queen St. E., Brampton  
877-0244 456-0580

**FORD BROTHERS**  
A COMPLETE LINE OF SWIFTS FEEDS  
• SEED CLEANING  
• GRASS SEEDS  
• SEED GRAIN  
• FENCE SUPPLIES  
• FARM FERTILIZER  
• LAWN & GARDEN SHIPMENTS  
• PURINA DOG & CAT FEEDS  
• MASTER HORSE FEED  
BALLINAFAD 877-2008

## NEW HOME OF THE WEEK



### PREMIUM HOME ON NARROW LOT

Featured this week, is this ideal home plan for building in an area where property is at a premium. With this design a narrow lot will accommodate this carefully planned family home with ease, but will not give that long-narrow house feeling.

The exterior has interesting diagonal siding with a roof that could be either shake or asphalt. One chimney and the front entrance are of brick, with the second chimney encased in vertical siding. At the rear is a double carport that can be enclosed if desired.

Through the handsome paneled front door one finds the guest coat closet, stairs to the bedroom floor, hallway to the kitchen and two steps down to the sunken living room. Spaciousness has been created here by the sloping ceiling to the second floor and the half wall at the foyer entry. Featured in the living room is a wood-burning fireplace and full front wall picture window.

The kitchen design is completely modern, with space for all the latest appliances and boards galore. The eating bar for quick snacks is a built-in convenience and step saver. From the kitchen mother can easily keep control of the youngsters in the family room.

The family room has room for games, T.V., lounging furniture, and a cosy fireplace for the cold winter evenings.

A back door opens from the family room to the large and partially covered sundeck. Summer entertainment and the Bar-B-Q will be a delight for the whole family and with the direct access to the kitchen chores are cut to a minimum.

The unfinished basement, with a stairway from the inner hall, has a utility room and space for a workshop. There is also space for a guest bedroom or recreation room, with a roughed-in fireplace. All future projects for the handyman.

Upstairs the large three piece vanity bath serves the two smaller bedrooms. The master bedroom has its own three piece shower ensuite and spacious walk-in closet for added luxury. View windows to the rear and room for a complete bedroom suite, plus comfortable easy chairs and T.V. make the master bedroom a retreat to privacy and peace.

Creating continual daylight over the stairwell and foyer areas is a skylite in the sloping ceiling. One will go far to find such a well-designed home to fit on a narrow lot, that contains all the amenities found here.

Plans for design No. P9-3-124 may be obtained at a cost of \$70 for a set of three and \$9 for each additional copy. Allow \$2 to cover postage and handling.

To view more than 100 well-designed quality homes of every type, send for the current publication of Home Plan Catalogue available for \$2.65 (\$2.25 plus 40c postage and handling). Make cheques and money order payable to Plan of the Week, and mail to:

New Home Of The Week, c/o The Herald  
103 Main St. South, Georgetown

Your Ad could fill this Spot

**CANADIAN NORTHWOOD MOVING & STORAGE**  
"Moving Canadians Ahead"  
R. (RAY) BAHIN, MGR  
287 Glidden Rd Brampton 451-4412

**TERRY McMULLEN General Contractor**  
SPECIALIZING IN  
• Patios Sidewalks and stoops  
• Chimneys  
BUILT & REPAIRED  
Plaster repair Stucco  
INTERIOR & EXTERIOR  
CALL ME 853-3911

**T.S. Electric Electric Contractors**  
A Division of W A T Electric Ltd  
POLE LINE CONSTRUCTION  
AERIAL LIGHTING  
ELECTRIC HEATING  
4 TRUCKS TO SERVE YOU  
Ind. - Com. - Res.  
2 Gairey Dr. 877-2413

**SNAPPER SALES & SERVICE**  
• LAWN MOWERS  
• RIDING MOWERS  
• GARDEN TILLERS  
Available At  
**GORDON'S SERVICE CENTRE**  
RR2 GEORGETOWN 877-5365

Leave the fuss... to us!  
All Types Of Plumbing Repairs  
Hotwater Heating  
Bathrooms  
New & Existing Homes  
Res & Comm.  
**R. BEENY PLUMBING & HEATING**  
PHONE 877-9362

**DELREX ALUMINUM LIMITED**  
CONSERVE HEAT  
Install  
STORM DOORS-WINDOWS  
Also REPLACEMENTS  
Bank Financing 877-5383  
RR 4 Georgetown

**REDDOT REALTY LTD REALTOR**  
• Custom Homes • Resales  
• Recreation Properties  
• Lots & Acreages  
877-0173 453-4442

## NOW IS THE TIME

SELECT AND SAVE at our garden centre -  
**Annual Bedding Plants**  
Wide Selection-Arriving Daily

|  |   |
|--|---|
| <b>19" LAWN MOWER</b> 3 HP<br>REG. 119.95 <b>97<sup>95</sup></b> | <b>ROTO-TILLER</b><br>3 1/2 HP Reg. 239.95<br><b>209<sup>95</sup></b> |
|--|---|

**WHEEL BARROWS 10% OFF**  
**THE NURSERY STOCK** has arrived from **SHERIDAN NURSERIES**  
MOUNT BATTEN JUNIPER Reg. 17.10 **12<sup>95</sup>**  
ALL TREES AND SHRUBS **10% OFF**  
ROSES Reg. 3.40 ea. **3<sup>95</sup>** ea.  
or 3 or more **2<sup>95</sup>** ea.  
ALL PRICES IN EFFECT TO MAY 30  
OPEN: **Aware of your needs... Master Feeds**  
R.R. 2, Georgetown  
Sat. 8-4; Mon-Fri. 8-5 STEWARTTOWN 877-3512

**HILLSIDE SAND & GRAVEL**  
• GENERAL HAULAGE  
• SAND & GRAVEL  
• TOP SOIL  
• FILL  
Prop: Bud Haines  
3 Durham 877-3302

**WALTER BERGSMAN PAINTER & DECORATOR**  
• COMMERCIAL  
• RESIDENTIAL  
• PAINTING  
• WALLPAPERING  
• FLOORING  
• INTERIOR DECORATING  
FOR FREE ESTIMATES CALL  
877-4028  
11 CHARLES GEORGETOWN

**Van Gool's Nurseries Landscaping**  
Planting Seeding Sodding  
Fertilizer Peat Moss Patios  
Weed Control Sod Delivered Etc.  
453-9711 17 Sideroad West Shelburne

**WESTINGHOUSE Hi/Ro/Li Heat Pump**  
Heats - Cools your home year round.  
One system does it all... automatically!  
COMMERCIAL - RESIDENTIAL  
Call... **HORNET ENGINEERING**  
855-4500 853-1906