

Hard look promised for municipal complex

Halton Hills council will take a long hard look at need and costs before committing itself to building an addition to the Trafalgar Road municipal offices, chairman of a newly-created council committee says.

Ward 3 Coun. Peter Pomeroy says he believes

council "first has to decide whether there is a need, and if the answer is yes, can we afford it?"

Coun. Pomeroy elected chairman of the committee composed of all members of council, says that if Halton Hills can't afford to pay for any addition out of current and

capital budgets than its future may be doubtful. He says he does not believe in committing tax money for future councils through debentures.

"We are not going to go back," he said, referring to the now scrubbed proposal for a \$700,000 municipal expansion shelled earlier this year.

"And as far as I am concerned it is a new project and if we can use some of the other project, all well and good, but we will not go back."

Mr. Pomeroy says it will likely take about five meetings of the new committee to reach a consensus, and he says all efforts toward a decision will be open to the public.

He said town staff are concerned about the long term implications of any planned expansion. "We have an obligation to staff and to those that will be asking the questions (the public)."

Efforts of the newly formed committee will be to a "total council involvement" where each individual will have to "stand up and be counted at the first and not at the end," he says.

Approval of the new committee came last week at a meeting to discuss expansion of the offices with architect

Donald Hallford of Oakville. Mr. Hallford reviewed the plans originally submitted for the expansion last year, but councillors indicated they were seeking a scaled down version.

Town planner Mario Venditti urged council to consider the long-term implications of an expansion saving the town is preparing to grow to between 50,000 and 60,000 people.

While Ward 4 Coun. Peter Morris said council should be looking at expanding the clerk, planning and engineering departments, Acton Coun. Pat McKenzie cautioned council on being "pennywise and pound foolish."

Mr. McKenzie urged against taking stop-gap measures outside of the context of the overall planned expansion.

Coun. Walter Behn, again defending the use of the present Church Street library for future library expansion, said he doesn't believe the library project for Cedarvale is as important as the expansion of municipal offices.

He said he might be willing to look at the municipal offices expansion if the cost is kept to \$400,000 to \$500,000.

Acton Coun. Les Dudy supported the need to expand saving that if the people of Halton Hills are to be served properly then offices should be built in one location.

While treasurer Ray King told council there is no immediate hindrance in finance operations, he sees merit in an expansion and hopes the department will be included in the long term planning.

But engineer Bob Austin was more critical of the present situation saying "it's psychologically depressing to have the engineering and building departments at the end of the works garage."

He said two accidents have occurred in the parking lot between private vehicles and town-owned equipment and vehicles.

Mr. Austin maintained that both public and a staff would be better off in one building.

If he wants to hold a meeting in his office with public or developers problems occur, he says, and illustrates his point by saying that if there were 11 people in his office, for a discussion, six would be

standing. Architect Hallford said it would be a sad affair if council did not consider its need in 1985.

Coun. Peter Marks called the issue one that has "been floundering for four years. If we do go for some kind of addition, it would be for planning and engineering and not be a monstrous complex."

Coun. George Malby added that council should be setting a design goal and working toward it.

Sludge disposal explanation

Ministry of environment spokesman Allan Saunders told works committee Monday that the most economical way to dispose of sludge from sewage treatment plants is to pay someone to haul it to farmers who want to use it for fertilizer.

Mr. Saunders says the sludge contains nitrogen and is a cheaper means of adding the substance to soil than commercial fertilizers because it is given free to farmers who will use it.

The question of when farmers can take delivery is a problem, he said, because wind changes spread odors. Ministry guidelines establishing a minimum distance from buildings where the sludge can be spread but a sudden wind change can totally change the picture in moments.

Good farmers will plough in the sludge as soon as possible after it is spread both to eliminate the possibility of run-off and to prevent the

evaporation of its nitrogen content. There is however, no ministry ruling demand that the sludge be covered within a specific time period after delivery.

Heavy metal waste in the sludge makes it unacceptable for use on farm land and thus plants with a high degree of heavy metal in sludge may be forced to discontinue giving it to farmers.

The Georgetown plant, he said, has an identifiable problem with one metal but is well within the acceptable range for the other 10 so it can continue to go on farmland.

The Georgetown plant produces 1,000 cubic yards of sludge per month, he says. A two-cell storage facility is currently under construction in Oakville to handle sludge from the Oakville, Milton and Halton Hills plants during the annual five-month period which Mr. Saunders estimates is unsuitable for spreading sludge through wet or frosty weather.

Approval of the new committee came last week at a meeting to discuss expansion of the offices with architect

Donald Hallford of Oakville. Mr. Hallford reviewed the plans originally submitted for the expansion last year, but councillors indicated they were seeking a scaled down version.

Town planner Mario Venditti urged council to consider the long-term implications of an expansion saving the town is preparing to grow to between 50,000 and 60,000 people.

While treasurer Ray King told council there is no immediate hindrance in finance operations, he sees merit in an expansion and hopes the department will be included in the long term planning.

But engineer Bob Austin was more critical of the present situation saying "it's psychologically depressing to have the engineering and building departments at the end of the works garage."

He said two accidents have occurred in the parking lot between private vehicles and town-owned equipment and vehicles.

Mr. Austin maintained that both public and a staff would be better off in one building.

If he wants to hold a meeting in his office with public or developers problems occur, he says, and illustrates his point by saying that if there were 11 people in his office, for a discussion, six would be

standing. Architect Hallford said it would be a sad affair if council did not consider its need in 1985.

Coun. Peter Marks called the issue one that has "been floundering for four years. If we do go for some kind of addition, it would be for planning and engineering and not be a monstrous complex."

Coun. George Malby added that council should be setting a design goal and working toward it.

Approval of the new committee came last week at a meeting to discuss expansion of the offices with architect

Donald Hallford of Oakville. Mr. Hallford reviewed the plans originally submitted for the expansion last year, but councillors indicated they were seeking a scaled down version.

Town planner Mario Venditti urged council to consider the long-term implications of an expansion saving the town is preparing to grow to between 50,000 and 60,000 people.

While treasurer Ray King told council there is no immediate hindrance in finance operations, he sees merit in an expansion and hopes the department will be included in the long term planning.

But engineer Bob Austin was more critical of the present situation saying "it's psychologically depressing to have the engineering and building departments at the end of the works garage."

He said two accidents have occurred in the parking lot between private vehicles and town-owned equipment and vehicles.

Mr. Austin maintained that both public and a staff would be better off in one building.

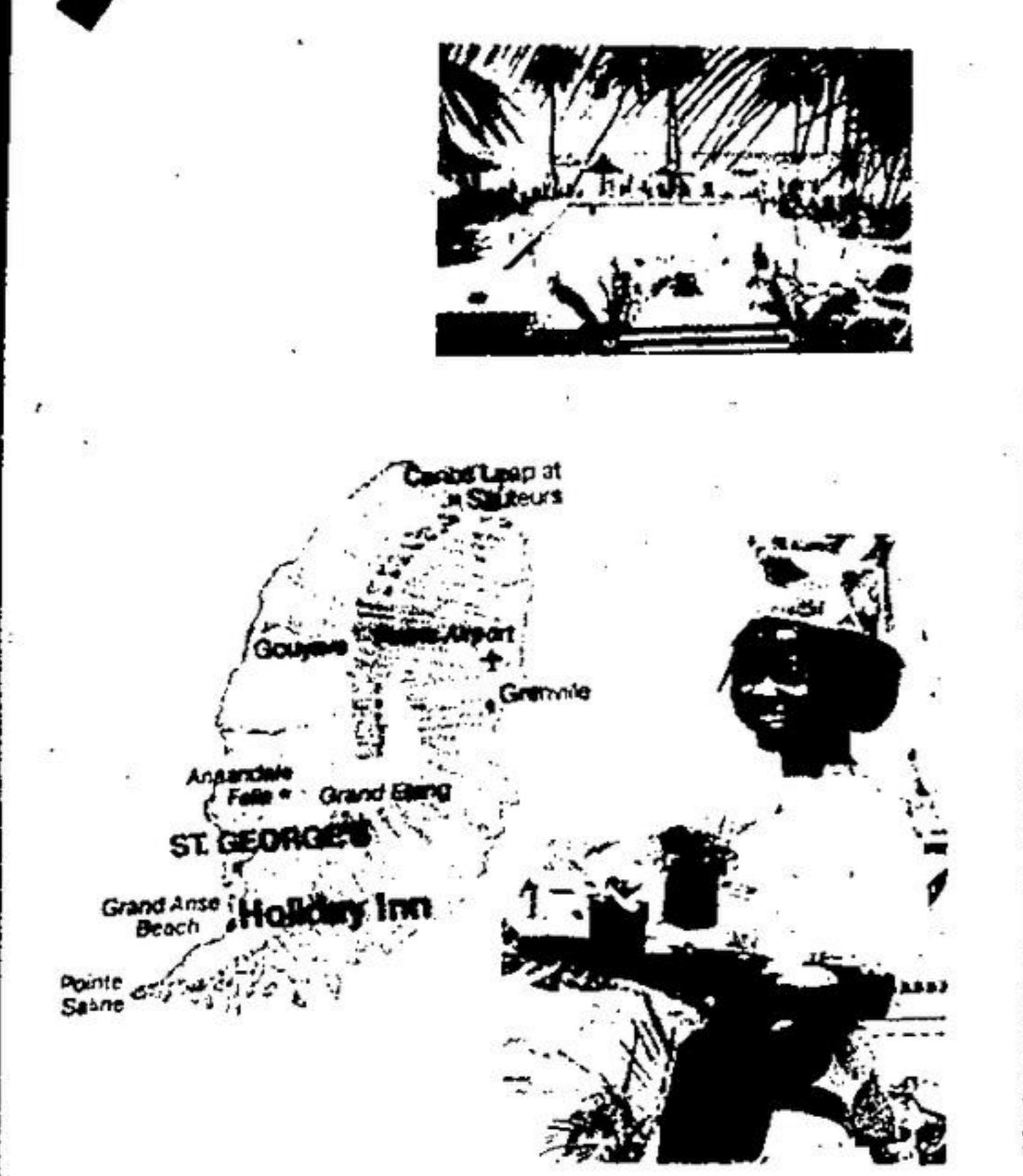
If he wants to hold a meeting in his office with public or developers problems occur, he says, and illustrates his point by saying that if there were 11 people in his office, for a discussion, six would be

standing. Architect Hallford said it would be a sad affair if council did not consider its need in 1985.

Coun. Peter Marks called the issue one that has "been floundering for four years. If we do go for some kind of addition, it would be for planning and engineering and not be a monstrous complex."

Coun. George Malby added that council should be setting a design goal and working toward it.

Travel



GRENADA "Isle of Spice"

Somewhere in our innermost thoughts most of us cherish the dream of escape to an island paradise — to some small private haven of dazzling white-sand beaches, lush green valleys and magnificent, green-clad mountains — where golden sunshine glitters excitingly over turquoise waters. In an imperfect world such dreams can never be completely realised, however, but among islands the world over, a place very near the top must be given to Grenada — the three-island nation which is the southern-most of the Eastern Caribbean islands.

Grenada (133 sq. miles) popularly referred to as the "Isle of Spice" is the only spice-producing area in the Western Hemisphere and includes the two Grenadine islands of Carriacou and Petit Martinique which are part of the chain of exquisite sunny islands stretching northwards between Grenada and St. Vincent. It has a population of 105,000 warm and friendly people who welcome guests from every part of the world. Its capital, St. George's enjoys the reputation of being the most picturesque town in the Caribbean.

Grenada with its unspoiled charm, unparalleled scenery adequate accommodation and hospitable people offers a vacation which will inevitably be a rewarding and memorable experience.

Grenada (pronounced Grenayda) was discovered by Christopher Columbus on his third voyage in 1498, but it was not until more than 100 years later that a group of London settlers arrived in an attempt to form a settlement. They were quickly driven off the fierce aboriginal Carib Indians who successfully discouraged all other attempts at settlement until the French purchased the island from them for two bottles of brandy and a few trinkets.

They then proceeded with the elimination of the unfriendly Caribs, forty of whom, rather than surrender, threw themselves off the cliffs on the north of the island. This gave its name to the present historical site of CARIBS LEAP in the town of Sauters which is a favorite spot for sightseers.

During the dynastic wars between Britain and France the island changed hands several times, and was finally ceded to Britain in 1783.

The old Forts — French and British — which dominate St. George's its picturesque capital, are mute testimonies of Grenada's rich historical background.

The island is blessed with a delightful year-round climate with an average temperature of 80 F. There are only two Seasons the DRY from January to May, when it is both cool and dry, and the

WET from June to December

when the rains seldom last as much as an hour and rarely two. Nature is at its greenest then and there are many who prefer the wet to the dry season.

Regular evening entertainment is provided by the resort hotels. Such entertainment includes, Crab-racing, Steel Band and Calypso Folklore Dancing, Limbo, Fire-eating and dancing to local orchestras. Popular night spots include "Evening Palace", "The Sugar Mill", "BBC Club", "The Island Club" and "Tropical Inn", "The Native" in the resort area, and "Rock Gardens", "Rendezvous" and "Hamilton Inn Disco" in St. George's.

"ROYAL DRIVE". This tour enjoyed by Her Majesty Queen Elizabeth II and known as The Royal Drive proceeds through the quaint town of St. George's the Island's capital, past Government House, the Governor-General's Residence, to the LIONS COMMUNITY CENTRE with its picture platform, which commands a panoramic view of St. George's. Along Westerhall Point — this model residential development of the Caribbean — past the little fishing village of Woburn featured in the film "Island in the Sun," through the sugar belt of Woodlands with its small sugar factory, and on to the

fabulous Grand Anse Beach, then back to St. George's. "ISLE OF SPICE DRIVE". Leaving St. George's the capital with its colorful streets and charming red-tiled roofs, the drive proceeds along the island's western coast with its tremendous scenic appeal. The approach to the tiny picturesque fishing village Gouyave is an unforgettable sight. When almost there stop at Dougalston Estate and see most of the island's spices in their natural form. Then proceed to the "Spice Factory" five minutes away and see the processing of some of the spices which you buy on the shelves of your supermarket. Return the same route, or proceed on a complete "round-the-island" Tour up to the historical "Carib Leap" in the north and then down the east coast.

CANCUN
The new Club Verano Beat on the beach full breakfast daily 1 wk. from \$419 at the Plaza Caribe \$1.00 breakfast credit daily.
From Golden Bird Holidays 1 wk. from **\$339**

GRAND BAHAMA
The Grand Bahama Hotel and Country Club 2,000 acre paradise 7 full breakfasts 5 full dinners, and much more.
From Adventure Tours 11th Dec. 16,77 1 wk. **\$269**

NASSAU
At the Pilot House including breakfast credit daily 5 full dinners for only \$29.00. Friday departures.
From Carousel Tours 1 wk. from **\$285**

HAWAII
ON A BUDGET Special Departure - March 2-16 CP Air, 747
STUDIO Per person, Dble from 559
PAGODA TERRACE in the heart of Downtown Honolulu
1 BEDROOM SUITE Per person, Dble. 589
Triple, each of 3 569
Quad, each of 4 549
2 BEDROOM SUITE Per person, Dble 619
Triple, each of 3 589
Quad, each of 4 559
CHILDREN UNDER 12 Sharing with 2 Adults each 380

All prices quoted are per person based on double occupancy. Hotel taxes, service charges and other taxes (such as Canadian airport departure tax) are extra unless stated otherwise. Prices may vary depending on date of travel and of course all trips are subject to availability at time of booking. Each tour company outlines their booking conditions on their brochure and all programs are sold subject to these conditions.
FOR MORE INFORMATION ACTON 883-1833 TORONTO 364-1034

Follow the Sun TO VACATIONLAND

Book Your Winter Vacation Now!

We have the new Sunlight, Skylark and Wardair brochures for you to choose from.

BARBER & HENLEY

33 Main St. S. GEORGETOWN 877-2214

HOURS 9 a.m. to 5 p.m. Mon. - Fri. Saturdays 9 a.m. to 1 p.m.

Wally Crouter Travel
Dorset Plaza, Milton 878-8193
Your Holiday Helpers

SR. CITIZENS
3 MONTHS FLORIDA FOR UNDER \$50 per week
Jan. 2-March 31-Dealn, Florida
INCLUDES: Return charter bus • en route motel accommodation • accommodations in deluxe fully equipped condominiums • bus service of experienced tour escort • all hotel taxes and baggage handling • optional sight seeing tours at additional cost.
\$899.00 per person double
ONE MONTH HOLIDAYS \$358 per person double
TWO MONTH HOLIDAYS \$489 per person double
2 bedroom condominiums from \$329 per person quad one month
A WALLY CROUTER EXCLUSIVE

HAWAII from \$559 p.p. double
FANTASTIC VALUE FROM ADVENTURE TOURS
Return flight on United Airlines 8747, transfers 14 nights at the Hawaii Dynasty in Honolulu, welcome breakfast, city tour.
Two island package Oahu/Maui available from \$789.00 p.p. dbl.
Includes rental car for 7 nights
ADVENTURE TOURS

GRAND BAHAMA
FANTASTIC VALUE from \$269 p.p. double
Return jet • transfers • 7 nights accommodation • 5 dinners • full breakfasts daily • free green fees at the 27 hole golf course • free tennis • cocktail party.
ADVENTURE TOURS
Open-Mon. - Fri. 10 - 6, Sat. 10 - 4

BARBADOS/GRENADA
Take a lively week in Barbados then hop over for the second week to the relaxing "Isle of Spice", Grenada.

YOUR BARBADOS - GRENADA HOLIDAY PACKAGE INCLUDES:

- Round trip airfare to Barbados via Wardair 747
- Round trip air transportation between Barbados and Grenada
- Full breakfast daily

from **\$819** per person, dble

For More Information Call **853-1553**

All prices quoted are per person based on double occupancy. Hotel taxes, service charges and other taxes (such as Canadian airport departure tax) are extra unless stated otherwise. Prices may vary depending on date of travel and of course all trips are subject to availability at time of booking. Each tour company outlines their booking conditions on their brochure and all programs are sold subject to these conditions.

Opening Tuesday, 10 a.m. November 1st

COCHRANE TRAVEL BUREAU

Opening Special

★ 2% Discount on all European Travel from opening to March 1st, 1978

★ Free coffee & doughnuts

Drop in and visit us. Let us help you plan your next holiday

COCHRANE TRAVEL BUREAU
Moore Park Plaza
877-0222 453-0470

HALTON PIZZA
877-4922

WREATHS
FOR REMEMBRANCE DAY PARADE, NOV. 6TH ARE NOW AVAILABLE
from the Royal Canadian Legion, Branch 120, 127 Mill St. or order from Fred 'Tut' Harrison, Poppy Chairman 877-9762. State whether the wreath will be picked up, prior to the ceremony or if you wish to have it placed on the Cenotaph by the Royal Canadian Legion.
COST OF THE NO. 14 WREATH IS \$12.50

PRODUCE
the Freshest Buys in Town
Open Sunday 10-6 - Tues., Wed., Sat. 9-6 - Thurs., Fri. 9-9

SPECIAL THIS WEEK

Ontario No. 1 CAULIFLOWER 59¢ ea. Reg. 89¢	Ontario No. 1 BROCCOLI 2 for \$1 Reg. 89¢
BANANAS 4 lbs. for \$1 Reg. 29¢ lb.	Ontario No. 1 TURNIPS 3 for \$1
Pepper or Butternut SQUASH 3 for \$1	HUGE SELECTION OF PUMPKINS FOR HALLOWE'EN

And Many More In-Store Specials

GEORGETOWN FRUIT MARKET
"The Home of Fresh Fruit and Vegetables"
130 Guelph St. GUELPH STREET PLAZA 877-8882