



Come Shop The Friendly Atmosphere of Downtown Georgetown



About The Hills



Joan Albert fastens the shawl for Lynn Purdey, who is modelling one of Mrs. Albert's patchwork creations. Mrs. Albert had a display of patchwork and quilting at the Georgetown branch of the public library last week.

QUILTING

Joan Albert was on hand at the Georgetown branch of the public library last Wednesday to display some of the patchwork and quilts she has designed.

Mrs. Albert has been making quilts for 19 years, although she rarely makes large ones.

"Most of my work is the smaller things, like cushions and wallhangings," she said. "I do a lot of experimenting with colors and fabrics."

Mrs. Albert has been teaching a night school course in quilting and patchwork at Georgetown District High School for the past two years. If there is sufficient interest shown, the course may be offered again in January. There are 17 people taking the course this fall, a number which Mrs. Albert considers "adequate."

"It's up to the board of education and the high school as to whether or not there is a course in January," she said. "I enjoy it, I'm going to do it anyway. But I feel that I learn more when I teach it."

Mrs. Albert doesn't sell any of her work. She gives much of it away to relatives and friends.

"And when you make small things, like cushions and purses and so on, they get used and washed and they wear out," she said.

Education mystery: Where are the students?

Haltom board of education has a mystery it can't figure out — what happens to students over the summer who don't show up at school in September.

Total enrolment in 1977 is down 1,247 from the previous year and 328 less than projected, the board was told Thursday. Actual enrolment is 51,201 as of the end of September — 30,221 in elementary schools and 20,980 in secondary schools, a decrease of 1,134 and 106 respectively.

John Boich, superintendent

of instruction, told the board that the disappearance of students over the summer months, especially in Burlington "is still a mystery."

And should the trend continue, he added, the luxury of libraries in the west education areas may be too expensive to support.

In the north education area, elementary enrolment, projected at 7,869 came in at 7,845 for a difference of minus 24. There were 90 fewer actual enrolments than in 1976.

Secondary enrolments, projected at 4,020 in the north were 4,026 and up 47 from the 1976 figure.

Georgetown and district high school with 1,954 enrolled had a net loss of 38 students over last year; Acton high school, which last year had 681 students, enrolled 720 this year; Milton high school enrolled 46 more than last year for a total of 1,352.

In the north, there are 3339 elementary teachers, 217 secondary teachers and 5.3 teachers of the trainable mentally handicapped. The respective pupil-teacher ratios are 23.42, 18.42, and 6.7. The board has a total of 2,469.55 teachers.

The decline in the number of pupils has not caught the board with too many teachers as it did last year when there were

about 45 teachers with no classes to teach. Mr. Boich said the board held back from hiring to meet its projections and as a result has only 11 or 12 teachers more than needed.

The amount of elementary pupils enrolling in the region's schools has declined steadily since 1972 when there were 32,579 enrolled as of the end of September. This year's decrease of 1,134 is the

biggest since then.

However, secondary enrolments decreased for the first time since 1970 to 106 fewer this year than last although the amount of the increase is a general downward trend. There were 15,493 secondary students enrolled in 1970.

Figures for schools for the trainable mentally handicapped indicate a net in-

crease in the number of enrolled students. There were 98 in 1970, 181 in 1976 and 154 in 1977.

There were a total of 26 portable classrooms in north Halton as of Oct. 7, 1977 — including one at Stewarttown, two at Georgetown High school, and one at Sunshine school on Trafalgar Road near Hornby. In all there are 53 portables in Halton.

Community Calendar

Runners needed

The North Halton Meals on Wheels Program needs runners to take the meals from the delivery vehicle to the door of the senior citizens' residences. These people do not need to drive but they are the ones who will make the actual contact with the recipients. They are the ones who see the gratitude from the people the service helps and have the chance to make new friends. Anyone with some spare time during the week or the month should call Ruth Poulous at 451-1453.

CAS drivers needed

Volunteer drivers are needed to assist the Halton Children's Aid in transporting children from a foster home to their natural parent's home, or for medical appointments, or sometimes for a meeting held at the Burlington office. Drivers are also needed to bring mothers from Norway, Glen Williams and Acton to a self-help program held once a week in the Georgetown office. Drivers are paid 20 cents a mile, plus parking expenses. Anyone with a few hours free during the week should call Chris Armstrong, volunteer co-ordinator at 878-2375.

Man's touch required

Helping Hands, a volunteer organization geared towards helping senior citizens and disabled persons, needs "a man's touch," co-ordinator Barb Stevens says. Men with knowledge of carpentry skills and gardening skills are required to assist senior citizens. Anyone interested should call Barb Stevens at 877-3920.

ARC workshop

Volunteers are needed to help in the ARC workshop in Hornby and to help in recreational activities. Anyone interested should call Mrs. Winifred Isham at 878-3369.

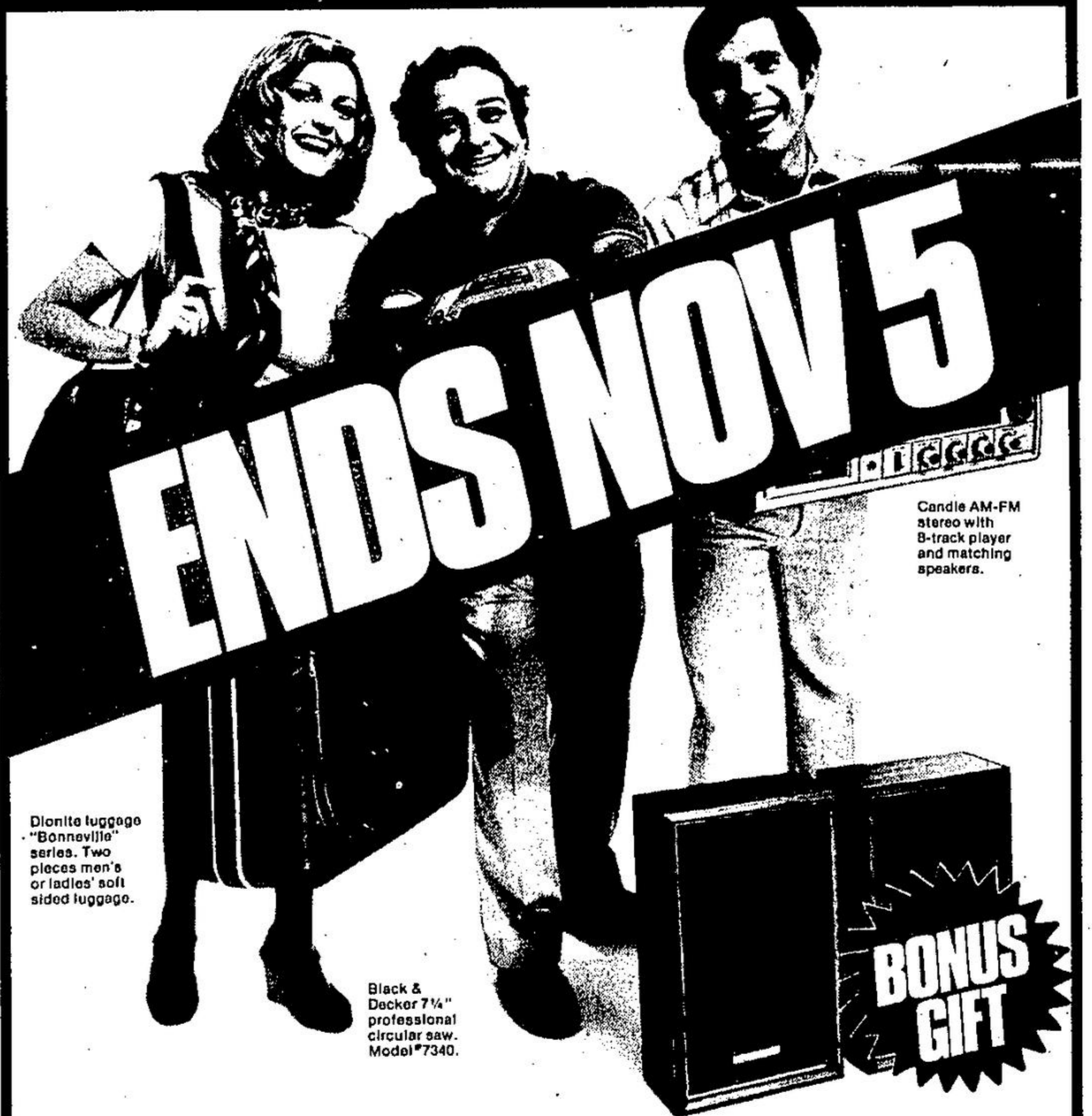
Block parents needed

Georgetown Block Parents are looking for volunteers to join the program. The executive committee is also looking for new faces. Their meetings are held on the second Tuesday of each month at 8 p.m. in the Elk's Hall. Anyone interested in befriending youngsters with potential problems can call Bob or Linda Anderson at 877-8978.

Nursery volunteers

Tinkerbell Nursery in Hornby needs volunteers to help during nursery school hours between 9 a.m. and 11:30 a.m. Anyone interested should call Carol Robertson at 877-1324, or 878-7656 between 9 a.m. and 11:30 a.m.

Planning to borrow \$2,500 or more? Compare our offer



Dionite luggage "Bonneville" series. Two pieces men's or ladies' soft sided luggage.

Black & Decker 7 1/4" professional circular saw. Model 77340.

Candle AM-FM stereo with 8-track player and matching speakers.

BONUS GIFT

- your choice of a valuable gift*
- 12 1/2% annual rate, with simple interest calculated on declining balance
- reduced rate on the purchase of new 77 and 78 cars rated 21 MPG* or better
- reduced rate on homeowner loans, with payback to 15 years, for larger purchases and renovations
- arrangements by phone

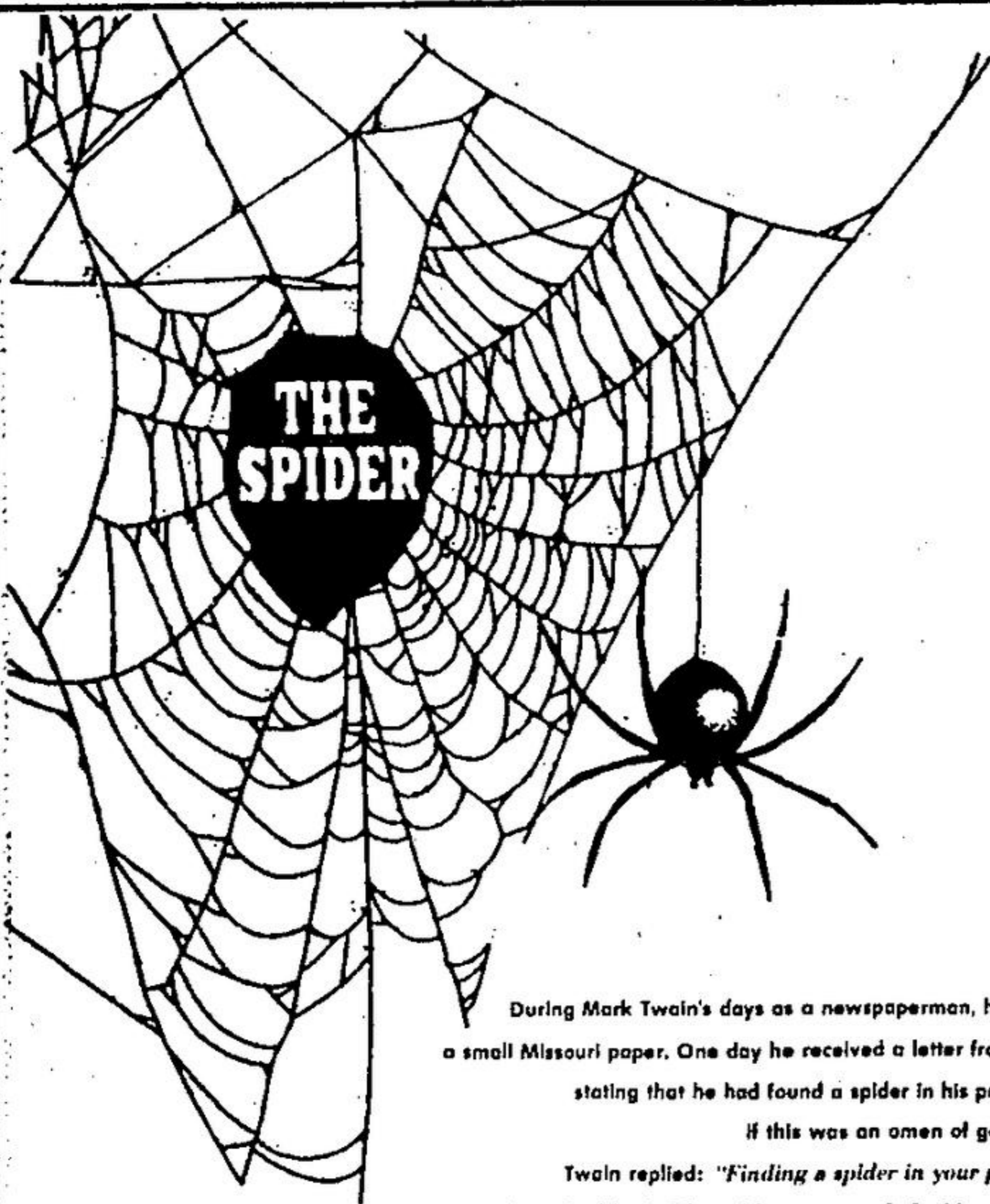
We're a financial supermarket, offering savings, chequing, mortgages and much more. *Gift offer and reduced rate on cars available only on loans applied for between September 6 and November 5, 1977 and subject to terms and conditions available at participating branches. For example, on a \$2,500 loan taken out for 36 months, the monthly payment would be \$83.63 and the cost of the loan \$510.68. Rate subject to change without notice. MPG based on manufacturer's city rating.

Canada Trust

Most branches open Thursday and Friday evenings and Saturday.

- Toronto Central Yonge at Adelaide 362-8161 • Queen at Lansdowne 531-9908 • Bloor at Bathurst 534-9211 • St. Clair at Yonge 923-1121 • Eglinton at Bathurst 789-2933 • Eglinton at Castle Knock 481-4485 • Yonge at Erskine 481-4435
- Toronto North St. Andrews Plaza 226-0484 • Fairview Mall 491-0587 • Toronto East Shoppers' World, The Danforth 698-2871
- Toronto West Eglinton at Wincott 241-5248 • Bloor near Royal York 231-8514 • Lakeshore (1 mi. west of Royal York) 259-2351
- Bloor at Mill Rd. 521-8320 • Mississauga Hwy. 10 south of 5 277-9474 • Square One (second level near Woolco) 270-9102
- Oakville Lakeshore at Trafalgar 845-7181 • Georgetown Main at James 877-2266
- Brampton/Bramaleas 28 Main 451-3385 • Bramalea City Centre (2nd Floor, near Eatons) 457-7090 • Shoppers' World 457-3201
- Milton Main at Charles 878-2834 • Richmond Hill Hillforest Mall (west side) 884-9169 • Oshawa Simcoe near Bond 723-5221

* not open Friday evening and Saturday ** not open Friday evening *** not open Saturday



During Mark Twain's days as a newspaperman, he was editor of a small Missouri paper. One day he received a letter from a subscriber, stating that he had found a spider in his paper, and asked if this was an omen of good or bad luck.

Twain replied: "Finding a spider in your paper is neither good nor bad luck. The spider was merely looking over our paper to see which merchant was not advertising so that he could go to that one, spin his web across the door, and lead a life of undisturbed peace ever afterward."

the HERALD
Home Newspaper of Halton Hills

will keep the spider away from your door