

# Steam days relived

Crowds flocked to Milton over the four day Labor Day holiday weekend to greet the return of the 17th Annual Steam Era.

It was the first time the popular event, which draws participants from across Canada and parts of the United States has run for four full days.

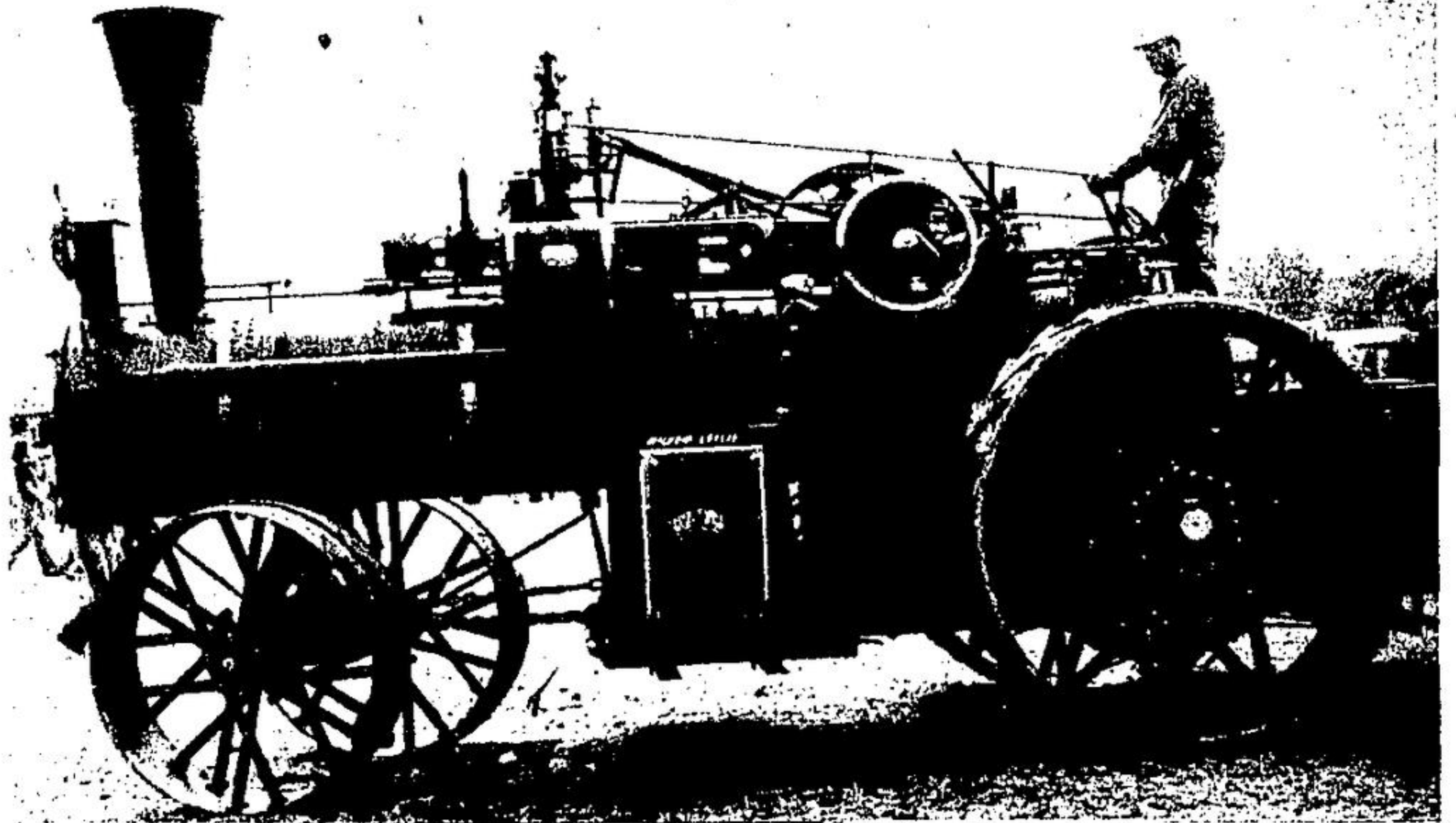
Besides looking over about \$1 million of steam and gas equipment, mostly made near the beginning of the century, the crowds viewed threshing, sheaf tying, log sawing and bag tying contests. As well, there was a talent show and live entertainment.

The Steam Era is the presentation of the Ontario Steam and Antique Preservers Association, founded in 1959 near Brookville in Halton County.

Herald photofeature By George Evashuk



Tractors can be used to pull almost everything, including a portable outhouse with some undergarments drying on a clothes line.



This western plowing engine was built by George White about 1869 near Winnipeg. The 28 horse power steam engine is now owned by Wilfred Leslie of Georgetown, who entered three steam engines at Steam Era in Milton over the weekend. It is driven by Mr. Leslie's brother Clark of Ottawa, where he is an engineer at the Parliament Buildings.



Crowds of sightseers and fans attended the Steam Era in Milton over the weekend. Above, Dad parks junior is an out of the way place while trying to take a souvenir picture.



Gordon Webb, above, comes every year to the Steam Era in Milton from his home in Nelson, British Columbia. Mr. Webb helps to operate a 24 horsepower J.I. Case steam engine made in 1914 and owned by Wilfred Leslie of Georgetown.



Mike Pascoe, 13, of Norval, fuels a boiler at Steam Era in Milton. It is his second appearance at the steam show where he lends a helping hand to Wilfred Leslie, of Georgetown owner of the steam engine.



Wilfred Leslie of Georgetown is at the controls of a number 17 Sawyer Massey steam engine built in 1924. Mr. Leslie has a collection of about 10 steam engines of various sizes. He has been a Preservers Association for about 12 years.

## 81,000 visit CVCA parks, revenue up 26 per cent

Credit Valley Conservation areas, surrounding Halton Hills, have been used by about 81,000 persons up to Aug. 2, since the parks opened May 24.

Park revenue is up 26 per cent, CVCA secretary-treasurer Vicki Barron told parks and recreation advisory board Tuesday.

Terra Cotta, Conservation Area's revenue is up \$14,543 over last year's figures, Monora is up \$785, Meadowvale is up \$604 but, Belfountain is down \$373.

Vicki Barron said Belfountain usually makes up for its loss in the fall season and

blamed the area's closeness to Terra Cotta for part of its loss.

The 81,000 figure of persons using the parks is based on four persons per vehicle or 60 persons per bus. About 58,000 persons used Terra Cotta Conservation Area facilities, about 5,900 persons used Monora Conservation Area, about 5,400 persons used Meadowvale's Conservation Area and about 12,000 used Belfountain Conservation Area.

Revenue statistics include concession rentals, all passes, conservation pool fees, wood fees, pavilion use and horse shoe rental.

Terra Cotta, the only conservation area with a concession pavilion, horse shoe rental and pool, earned \$1,500 from the concession, \$6,681 from the pool, \$22 for pavilion use and \$3 for horse shoe rental.

Conservation areas at Terra Cotta, Belfountain and Meadowvale earned the most revenue from day use and walk-ins. Terra Cotta earned \$24,065, Belfountain earned \$7,147 and Meadowvale earned \$2,146. Monora earned the most revenue from day use, camping sites.

Presented to the parks and recreation members were pro-

posed plans under the capital development budget for 1978. Members approved \$26,000 to improve Terra Cotta Conservation Area, \$10,500 to improve Terra Cotta Conservation Area, \$10,500 to improve Orangeville Reservoir Conservation Area, \$4,700 to improve Monora Conservation Area, \$4,000 to improve Belfountain Conservation Area and \$7,500 to improve Meadowvale Conservation Area.

Harry Watson, CVCA general manager, said the budget is mainly a maintenance budget, and figures have been kept very low. Mr. Watson said

staff is concerned with the cost of building a new administration building and the figures are only six per cent more than last year.

Chairman Frank Leavers said the "honeymoon is over" and a tight rein will have to be kept on budgetary proposals by the CVCA. The province refused to keep pushing dollars towards conservation needs, he said.

A. G. Clarkson said the CVCA has not been doing the "best job for restricting costs and staff will have to reduce to the deficit of conservation areas.

At Terra Cotta \$10,000 is to improve fencing which Mr. Watson said "is in sad state and needs repair badly", and for grading the south parking lot, putting in concrete curbs and angle parking. \$2,000 will be spent to make spaces for cars to turn around in.

A further \$3,500 will be spent on improving campsites with sand smoothed along the ground and for the addition of large barbecues in the Thompson Area.

At Orangeville Reservoir Conservation Area a lot of money is being spent to fix up the area, Mr. Watson said, so

that the area will become revenue producing. So far, no admission is charged at the gate, but if improvement plans are carried out, admission will be charged next year.

At Meadowvale Conservation Area, Mr. Clarkson pointed out that since the park is designated as a passive park in the official plan, the \$1,000 proposed for playground facilities would be contravening with the plan.

Therefore, \$1,000 is transferred to landscaping along with \$1,500 proposed for the demolition of the Douglas house on the Meadowvale Pro-

perty. Roy McMillan, however, won an argument not to have the Douglas House demolished.

Mr. Watson submitted a report on the Belfountain wading pool, which he said, "has always been a matter of concern since it was over the maximum depth of 18 inches for a wading pool, and build-up of algae and silt on the sides and bottom makes it dangerous due to a slippery bottom."

A spring located on the pool has cracked the bottom and silt enters the pool from underneath. Mr. Watson said the pool is now a "18 inch deep pool

with semi-stagnant water."

He recommends clearing a wading area in the river upstream of the bridge and grade a beach to the area. Add sufficient sand to create a small artificial beach and a sandy bottom in the river. Buoy off the area. Fill the existing wading pool with gravel and top off the 4' of concrete with a rough surface. Parks and recreation approved the report and said recommendations should be carried out. In the proposed capital development budget for 1978, \$1,000 is included for improving the water fountain and the wading pool.