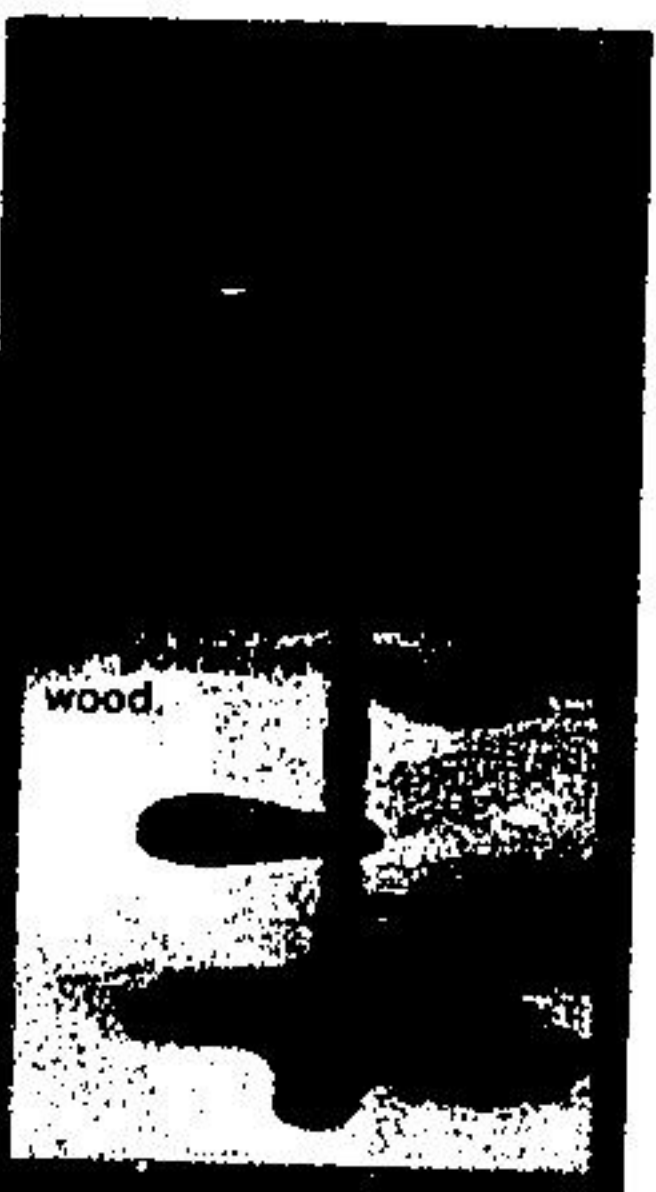




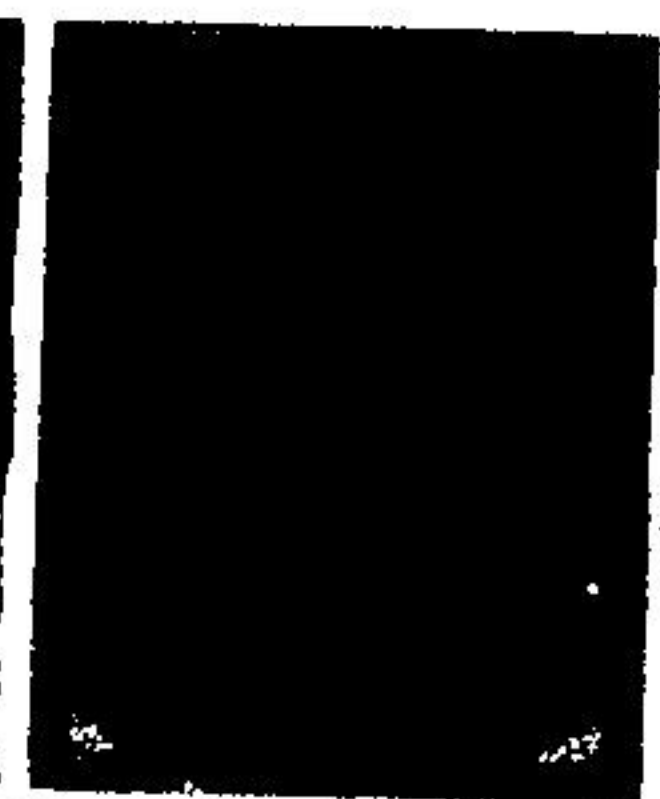
HANGING GLASS BALL
Mexican hand-blown 6" crystal bubble, with 28" syntex ropenest.

"FUTURA" HANGING PLANTER
Clear durable plastic, 6" dia. x 12" high.

STONEWARE PLANTER
Earth-tone, 4" dia. Handcrafted lweed cords.



PLASTIC PLANTERS WITH SAUCERS
\$2 - \$3
11" \$5



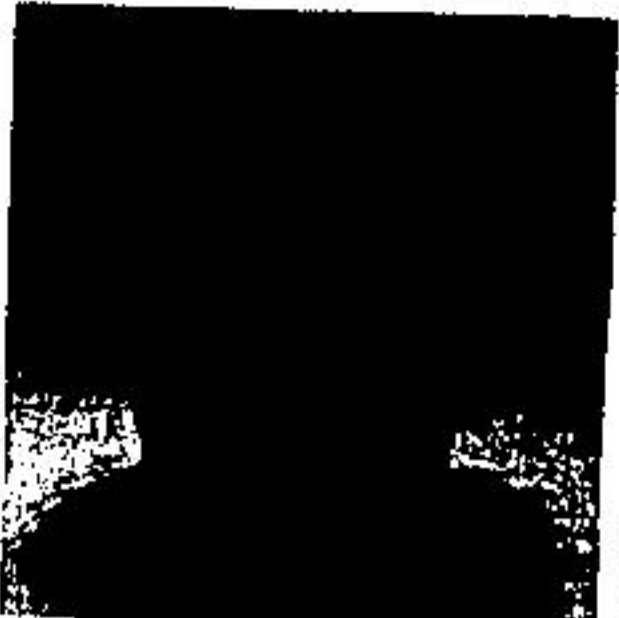
CERAMIC PLANTER TABLE \$1.75
HANGING WITH SYNTAX ROPENEST \$2



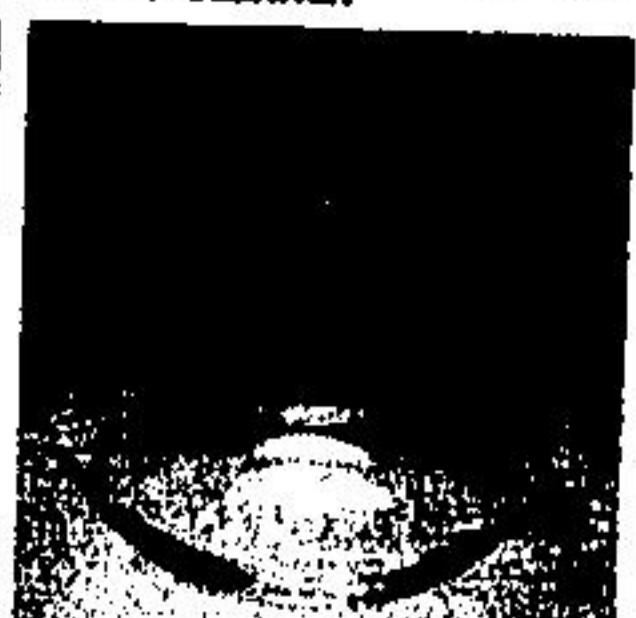
"GREEN EARTH" 16 OZ. PLANT FOOD & PLANT CLEANER \$1.25 EA.



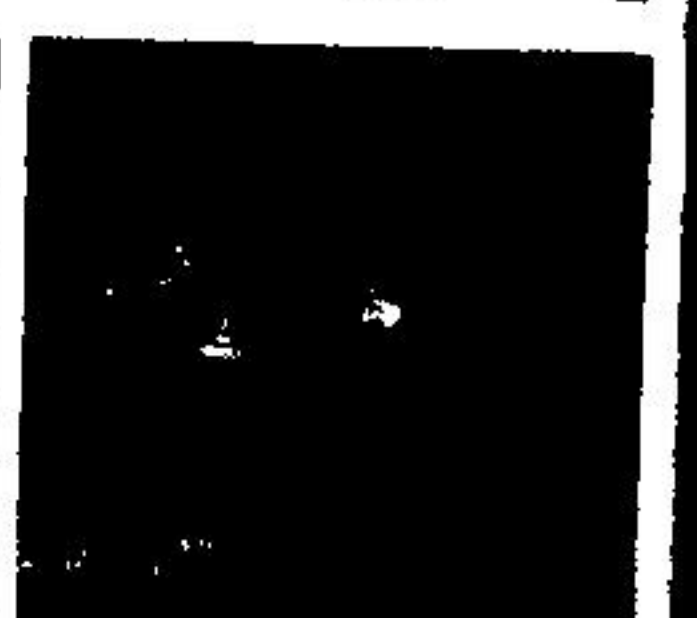
PLASTIC 4" POTS FOR 12 \$1



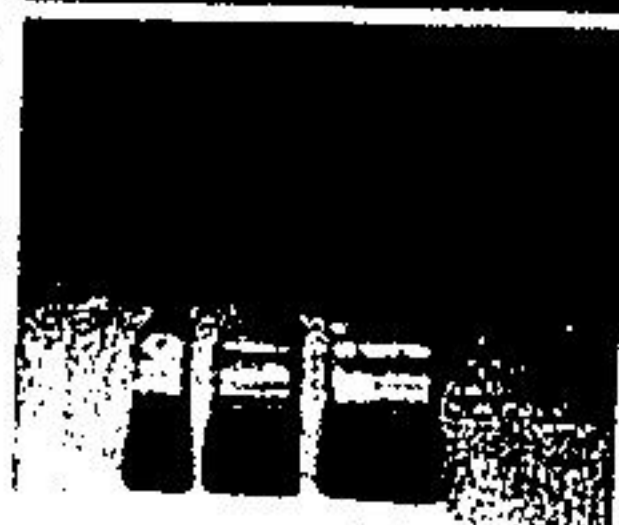
PLASTIC WOODGRAIN PLANTER 1.75



6" MEXICAN GLASS BUBBLE BALL 1.75



SWAG HOOKS PKG. OF 2 \$1
Assorted colours



3-PC BRUSH SET, 1", 1 1/2", 2" \$1



WHITE LATEX SATIN OR ALKYD SEMI-GLOSS \$2 QT.



PACK OF 3 7/8" ROLLER REFILLS \$1



9 1/2" ROLLER & PLASTIC TRAY SET \$2



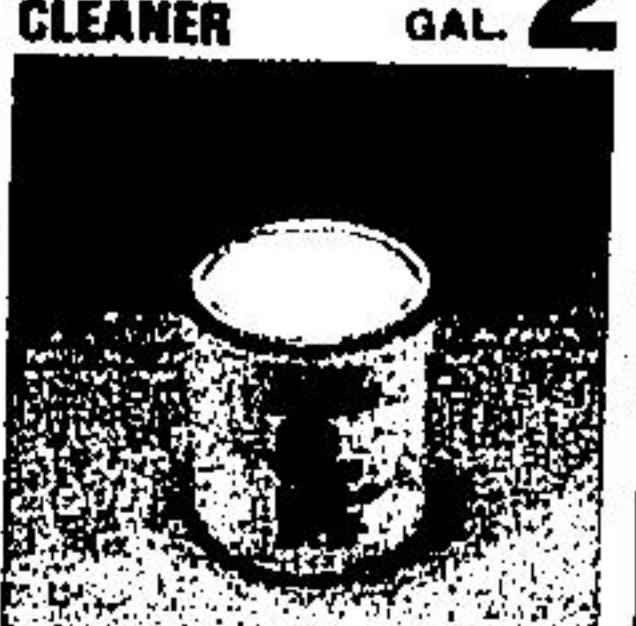
PAINT THINNER & CLEANER GAL. \$2



PAINT BRUSHES 2", 2 1/2", 3" EA. \$2



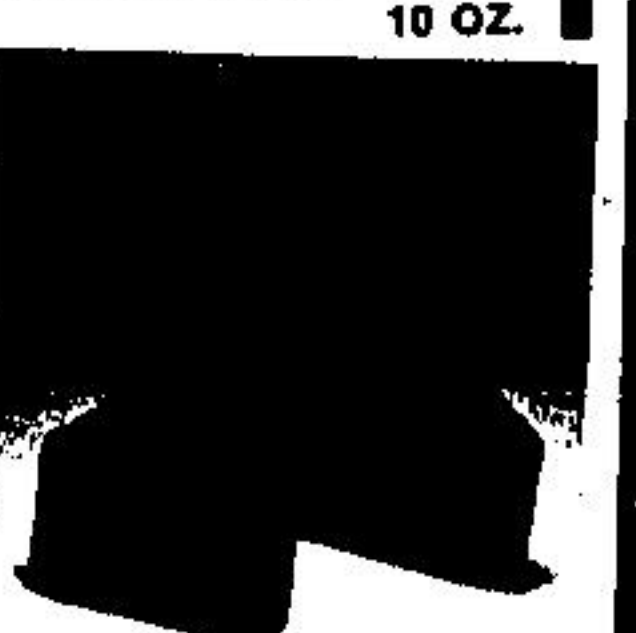
"GRANNY" SUNGLASS CADDY, LITTERBAG OR VISOR WALLET \$1



EPOXY ENAMEL SUPER WHITE 10 OZ. \$1



ENGLISH CHAMOIS SIZE 15" x 14" \$2



RUBBER MINI SPLASH GUARDS \$1 PR.



FUNNEL & 18" HOSE \$1



12 VOLT SPOTLIGHT \$2



"STP" GAS TREATMENT FOR 2.50