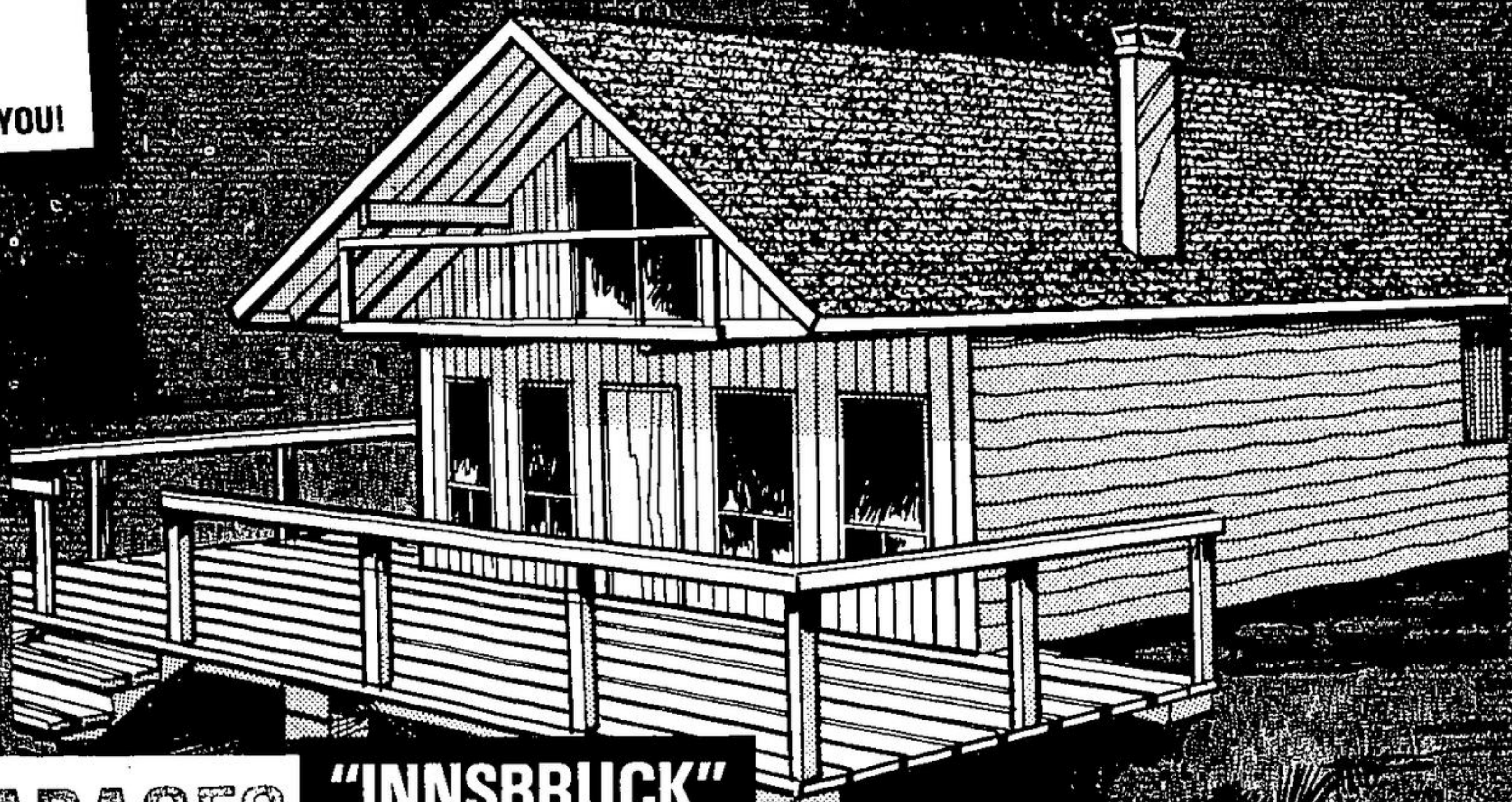


**FREE**  
AT THE CENTRE NEAREST TO YOU!

**DESIGN**  
**SARA**  
**DESIGN**



**HOUSES GARAGES**

Please Note: Prices Shown Are Approximate for Materials only to close in with 7/16" asphalt sheathing (siding extra) to CMHC specifications.

Please Note: Prices Shown Are Approximate for Materials only to close in.

- "CASHCO 3" TWO BEDROOM**  
Approx. 720 Square Feet **\$2553**
- "CASHCO 1" THREE BEDROOM**  
Approx. 1021 Square Feet **\$3344**
- "CASHCO 2" THREE BEDROOM**  
Approx. 1104 Square Feet **\$3535**
- "CASHCO 4" THREE BEDROOM**  
Approx. 1392 Square Feet **\$4575**

- BASIC SINGLE CAR**  
Approx. 12' x 20' **\$513**
- DELUXE SINGLE CAR**  
Approx. 14' x 22' **\$963**
- DELUXE DOUBLE CAR**  
Approx. 12' x 24' **\$1586**

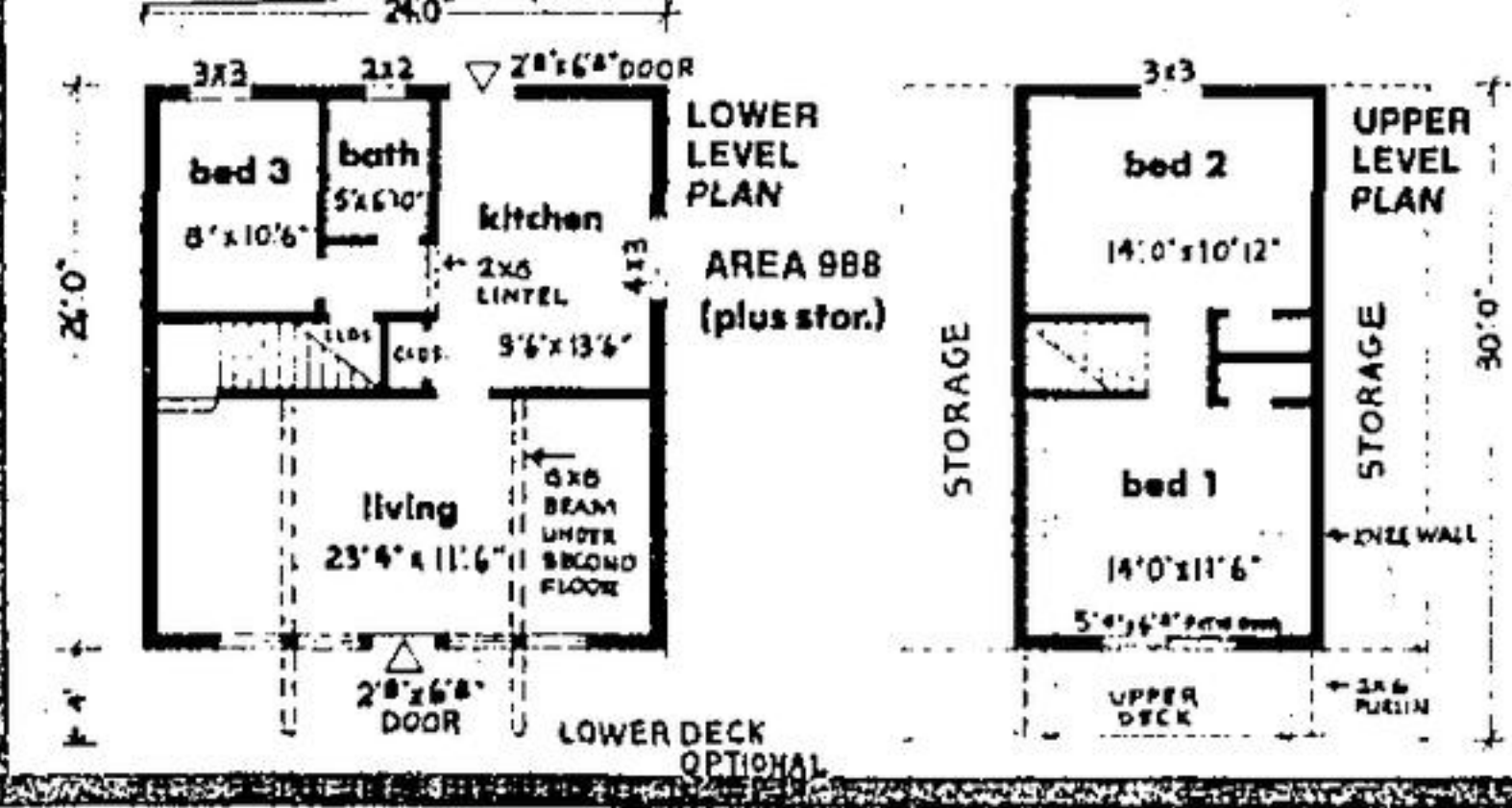
**"INNSBRUCK" COTTAGE**

A DELUXE PLAN! APPROX. 988 SQ. FT. The Lower Deck and Certain Other Features Shown Including Chimney Are Optional Extras.

**\$3,995**

Approx. Price For Most Materials To Close in

**"INNSBRUCK" FLOOR PLANS**



**6 OTHER COTTAGES**  
All Prices Shown Are Approximate For Materials to close in.

- "BAYSHORE" Two Bedroom**  
Approx. 384 Square Feet **\$1618**
- "SHERWOOD" Three Bedroom**  
Approx. 580 Square Feet **\$2231**

- "FERNLEIGH" Three Bedroom**  
Approx. 640 Square Feet **\$2455**
- "CARTIER" Three Bedroom**  
Approx. 788 Square Feet **\$2674**

- "KIRKLAND" Three Bedroom**  
Approx. 878 Square Feet **\$3281**
- "BRIARWOOD" Three Bedroom**  
Approx. 943 Square Feet **\$3559**

**LET US QUOTE YOUR OWN PLAN**  
If You've Already Selected A House, Cottage or Garage Plan, or are ready to build that Barn, finish off your Rec Room or enlarge a Kitchen or other room, let us quote on the materials you'll be needing. NO OBLIGATION TO YOU. Know beforehand what your material costs will be.

**QUALITY "SQUARE A" METAL CHIMNEYS**  
TRADITIONAL OR MODERN

FOR COTTAGES, HOUSES, WORKSHOPS, ETC.

Stainless Steel Flue. Sections that simply snap-lock together during installation. The square exterior provides 30% more casing and insulating materials than circular, factory-built chimneys.

2-FOOT SECTION 7-FLUE **\$1797** EACH

BRICKADED 2-FT. SECTION 7" FLUE \$22.97

Please Note: Components For 7" Chimneys Are Priced. 6" Components Also Are Available To Meet Your Needs

- Basic Assembly \$17.95
- Rain Cap \$6.97
- Roof Flashing \$4.25
- Support Box \$6.98
- Spark Arrestor \$10.99
- Base Tee 1 opening \$4.49

**BLACKTOP PATCH**  
For Driveway Repairs, Etc.

75-LB. BAGS!

MOST YARDS **\$312** BAG

North Bay, Sudbury, New Liskeard and Saull Ste. Marie **\$355** BAG

**FOUNDATION COATING**  
OR  
**LIQUID ROOF COATING**

5-GAL. PAIL **\$995** PAIL

**SPACEMAKER METAL STORAGE SHEDS**

Approx. 6'x5' MODEL CH65 **\$7995** EACH

Choose The One That Best Meets Your Own Storage Needs. All Other Features SPACEMAKER quality. All features such as STEEL DOOR, pre-insulated floor, lock, insect proof, frame, heavy insulating construction. Steel interior, aluminum exterior. Not painted.

Approx. 6'x5' MODEL CH65 **\$7995** EACH

Approx. 8'x6' MODEL CH85 **\$15995** EACH

Approx. 10'x8' MODEL CH105 **\$24795** EACH

Lawn And Garden Formula! Up To About 5000 Square Foot Coverage When Used As Directed. Economy Buy For You!

10-6-4 **FERTILIZER**  
PER 50 POUND BAG!!!

Use For Grass, Flowers, Trees, Evergreens, Shrubs and For Vegetable Gardens. Offered Strictly While Stocks Last! And As Available - So Hurry!

**\$398** 50-POUND BAG

**CEDAR SHINGLES AND SHAKES**

Featured prices are based on orders for 10 Squares or more. Small order prices are higher per Square. Bundle prices also are available. Order from our Malton Warehouse or through your local Cashway store.

- 1-5X SHINGLES **\$7950** SQUARE
- 2" HANDSPLIT AND RESAWN SHAKES **\$7950** SQUARE
- 3-5X OR NO 4 2" ROYALS OR NO 3 PERFECTIONS **\$5875** SQUARE

ONE SQUARE IS SUFFICIENT TO COVER 100 SQUARE FEET

**JACK POSTS**  
CMHC APPROVED!  
**\$1347** EACH

Safe Load Support Up To 9,000 Pounds. Extension 80" to 96". With base plate and 4" x 4" top plate. Helps support new construction.

JUST ADD WATER!  
"JIFFY" or "KWIK MIX"

**PREMIXED CEMENTS**

Featuring **90-POUND CONCRETE MIX**

(Over 1/3 Larger Than 66-Pound Bag Elsewhere On The Market)

ALSO **80-LB. SAND MIX**  
**80-LB. MORTAR MIX**

MOST YARDS **\$224** BAG Your Choice

North Bay, New Liskeard, Saull Ste. Marie and Sudbury yards **\$249** BAG

**80-LB. PORTLAND CEMENT**

We Have It In Stock At Competitive Prices. Check Locally. Also Check Our Prices On Cap 'N Bond Cement.

**OUR MAILING LIST IS NOW BEING REVISED!!**

If You Wish To Continue To Receive Our FREE Bulletins As They Are Published Now's The Time To Send Us Your Name. Simply Fill In And Mail The Coupon Below.

**YES!** I WOULD LIKE TO RECEIVE YOUR FREE BULLETINS AT MY HOME ADDRESS.

Name \_\_\_\_\_

Address \_\_\_\_\_

City \_\_\_\_\_

Province \_\_\_\_\_

Postal Code \_\_\_\_\_

Phone \_\_\_\_\_

Send me \_\_\_\_\_

\_\_\_\_\_

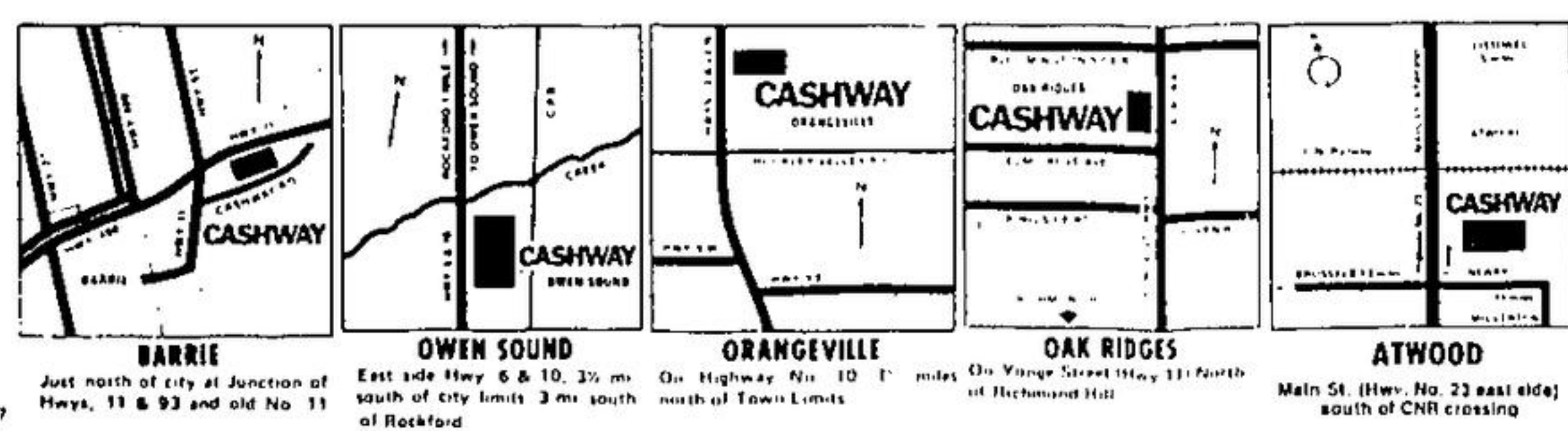
**FREE MATERIALS TRANSFER SERVICE**  
THE CASHWAY SERVICE THAT CAN SAVE YOU BOTH TIME AND MONEY!!

Here's How It Works. You Can Order Materials For Your Building Project From Any Cashway Centre That's Located Conveniently To You. . . And Have Your Materials Ready For Pick-Up At The Cashway Centre Located Nearest To Your Actual Building or Project Site. The Cashway Materials Transfer Service Is Available Through Any Of The Cashway Centres Listed Below. Enquire About It Today. . . Learn How It Can Work For You.

DELIVERY AVAILABLE BY LOCAL TRUCKER AT REASONABLE RATES

ALL STORES OPEN WEEKDAYS 8:30 A.M.-6 P.M.; SATURDAYS TO 5 P.M.; THURSDAYS & FRIDAYS TO 9 P.M.

**CASHWAY LOCATIONS IN YOUR IMMEDIATE AREA**



- COMPLETE LIST OF ALL CASHWAY LOCATIONS**
- AJAX - 181 Dowling Road •ATWOOD - Main St. (Hwy. No. 23 east side) south of CN crossing
  - BARRIE - Jct. Hwy. 11, 93 and old No. 11 •BEAUMVILLE - 200 Ontario St. •BELLEVILLE - 24 Newberry St. •BRAMBLETON - Brambleton Rd. at Sables Ave. •BRANTFORD - Grand School Rd. Jct. Hwy. 2 •BROCKVILLE - 550 Stewart Blvd.
  - BROOKLIN - Hwy. No. 7 and 12 •CHATHAM - R.R. 1, 1/2 miles east of Chatham •CORNWALL - Division Rd. at Hwy. 128 •COBURN - Division St. N. •DUNDAS - 127 King St. W. •GALT - CAMBRIDGE - Eagle St. at Highway 24
  - GRIMSBY - South Service Rd. off G.E.W. Highway east of Kermans Ave. •HAMILTON - Kado Rd. •HAWKESBURY - West on old Hwy. 17 •HUNTSVILLE - Old Ferguson Rd. off Hwy. 11, just south of Huntsville •KINGSTON - Dalrymple (Hwy. 33) •LINDSAY - 1/2 mile south on Hwy. 35 •LONDON - Hwy. No. 24 one mile east of Lambton •MIDLAND - Hwy. 27, west side, just north of Hugel Ave. •NEW LISKEARD - Regine St. off Whitford •NIAGARA FALLS - 8288 Montrose Rd. •NORTH BAY - McCaughey at Fisher •OAKVILLE - 2311 Royal Windsor Dr. •OAK RIDGES - Yonge St. (Hwy. 11) •ORANGEVILLE - 1/2 mile north on Hwy. 10 •OTTAWA - 10 Cleveview on Hwy. 10 •POTTAWA •PETERBOROUGH - 1195 Newmarket Ave. •NEW BOUND - 3/2 miles south on Hwy. 6 & 10 •PEMBROKE - Brimham Ave. (Hwy. 42) •PETERBOROUGH EAST - 116 Parkhill Rd. E. •PETERBOROUGH WEST - Hwy. 28 and Hwy. No. 7 by Pass
  - RENFREW - 310 Hall Ave. E. •RUTHVEN - 1/4 mile north on Hwy. 3 •SAULT STE. MARIE - 132 Black Rd. R.R. 2
  - SCARBOROUGH - (Toronto) - 4896 Sables Ave. E. at Midken. Ont. •SARNIA - 115 Confederation St. •STONEY CREEK - King & Jones Sts. •STITTVILLE / HAZELDEAN - Edgewater St. and Hwy. 7, Hazeldean •SUDBURY - 943 Barrydowne Rd. •WINDSOR - 1665 Lawson Rd.